

INDICE DELL' ATTACCO BT (JIS-B 6339/MAS 403 BT)

INDEX OF BT (JIS-B 6339/MAS 403 BT) SHANK

**RIDUZIONI DA BT
A ISO/TC/BT E HSK**
BT ADAPTERS TO
ISO/TC/BT AND HSK



Programma
completo
a pag.

117

**AUTOSERRANTI
INTEGRALI**
MONOLITHIC DRILL CHUCKS



Programma
completo
a pag.

118

**ATTACCHI PER MANDRINI
PORTAPUNTA DIN 238**
SHANKS FOR DRILL CHUCKS
DIN 238 TYPE



Programma
completo
a pag.

119

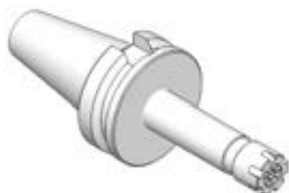
**PORTAPINZA ER
EXTRACORTI**
ER-DIN 6499 COLLET CHUCKS
WITH INSIDE NUT



Programma
completo
a pag.

119

**PORTAPINZA ER
CON GHIERA MINI**
ER-DIN 6499 COLLET CHUCKS
WITH MINI NUT



Programma
completo
a pag.

120

**PORTAPINZA ER
CON GHIERA STANDARD**
ER-DIN 6499 COLLET CHUCKS
WITH STANDARD NUT



Programma
completo
da pag.

122

**PORTA MANDRINI CON ATTACCO
TRAPEZIO DIN 6327**
AUTOMOTIVES SHANK HOLDERS
ACCORDING TO DIN 6327



Programma
completo
a pag.

125

**MANDRINI PER PINZE
EOC DIN 6388**
DIN 6388 COLLET CHUCKS



Programma
completo
a pag.

125

**MANDRINI
A FORTE SERRAGGIO**
HIGH GRIP CHUCKS



Programma
completo
a pag.

126

**MANDRINI
A SERRAGGIO IDRAULICO**
HYDRAULIC CHUCKS

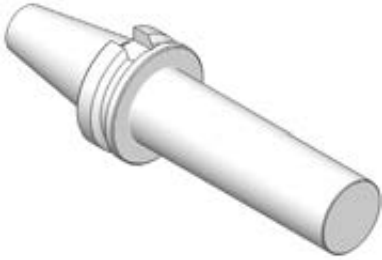


Programma
completo
a pag.

127

INDICE DELL' ATTACCO BT (JIS-B 6339/MAS 403 BT)
INDEX OF BT (JIS-B 6339/MAS 403 BT) SHANK

**BARRE
A STELO TENERO**
BLANK BARS



**BARRE
DI CONTROLLO**
TEST ARBORS



**PORTAFRESE WELDON
TIPO EXTRACORTO**
*SHORT TYPE END MILL HOLDERS
FOR DIN 1835-B SHANKS*



PORTAFRESE WELDON
*END MILL HOLDERS
FOR DIN 1835-B SHANKS*



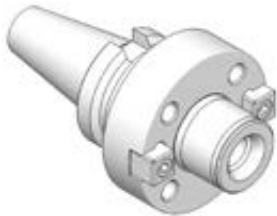
**RIDUZIONI
A CONO MORSE**
ADAPTERS TO MORSE TAPER



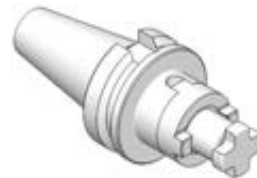
**PORTAFRESE
FISSI**
*DIN 6357
FACE MILL HOLDERS*



**ATTACCHI PER FRESE
AD INSERTI**
*FACE MILL HOLDERS FOR
FACE MILLING CUTTERS*



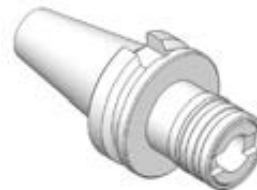
**PORTAFRESE
COMBINATI**
*DIN 6358 SHELL END
MILL HOLDERS*



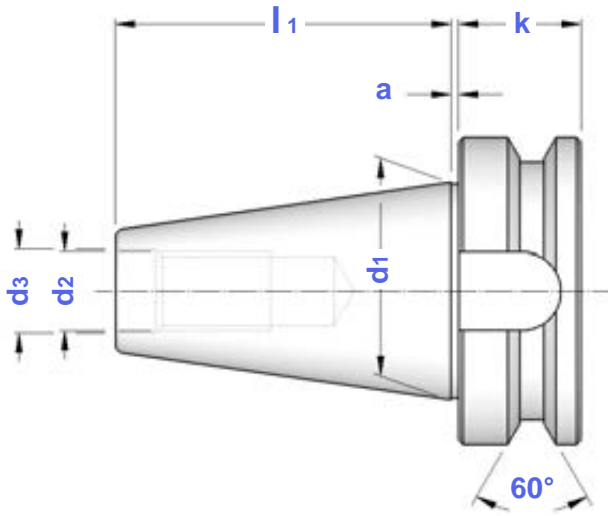
**MANDRINI PER FRESE
CON ATTACCO FILETTATO**
*CHUCKS FOR MILLING CUTTERS
WITH THREADED SHANK*



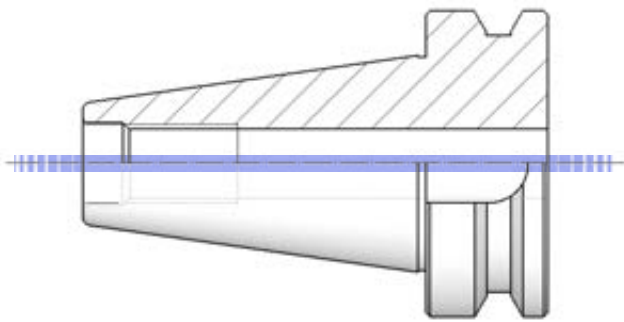
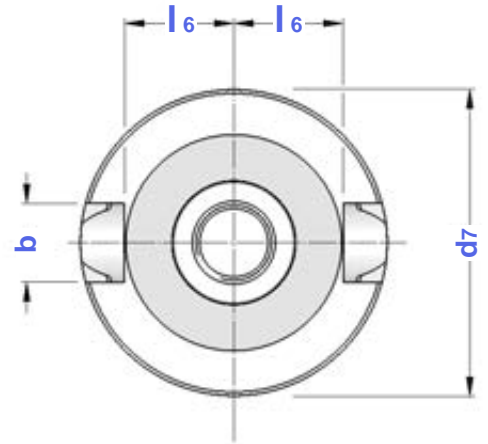
**MASCHIATORI
A CAMBIO RAPIDO**
QUICK CHANGE TAP HOLDERS



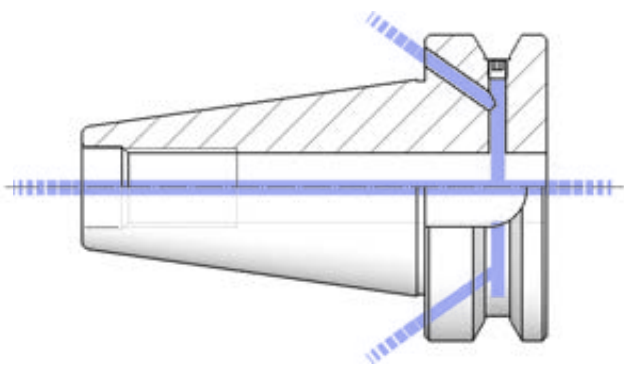
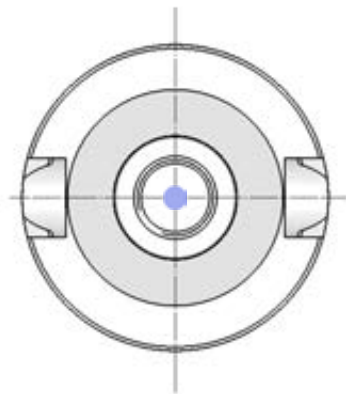
CARATTERISTICHE TECNICHE CONI BT (JIS-B 6339/MAS 403 BT)
BT TAPER STANDARD FEATURES



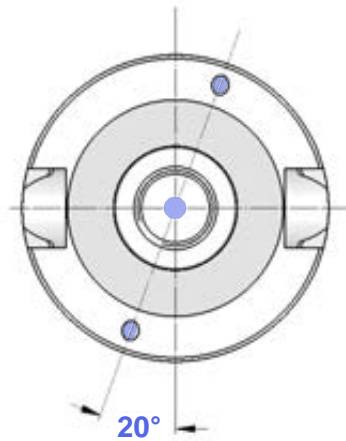
**FORMA
A**



**FORMA
AD**



**FORMA
AD+B**



CONO	a	b	d1	d2	d3	d7	k	l1	l6	PRECISIONE
BT 30	2	16,1	31,75	M 12	12,5	46	20	48,4	16,3	
BT 35 /1	2	14,1	38,10	M 12	12,5	53	20	56,4	19,6	
BT 35 /2	2	16,1	38,10	M 12	12,5	53	22	56,4	19,6	
BT 40	2	16,1	44,45	M 16	17,0	63	25	65,4	22,6	
BT 45	3	19,3	57,15	M 20	21,0	85	30	82,8	29,1	
BT 50	3	25,7	69,85	M 24	25,0	100	35	101,8	35,4	

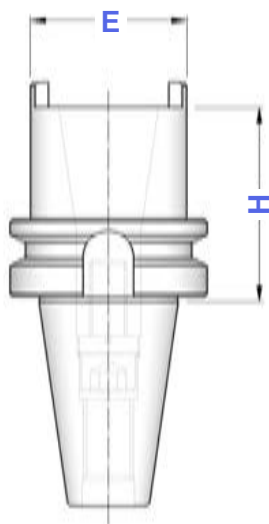
CODOLI DI AGGANCIO
PULL STUD BOLTS







BT

RIDUZIONI DA BT A ISO/TC/BT
BT TO ISO/TC/BT ADAPTERS

FORMA A

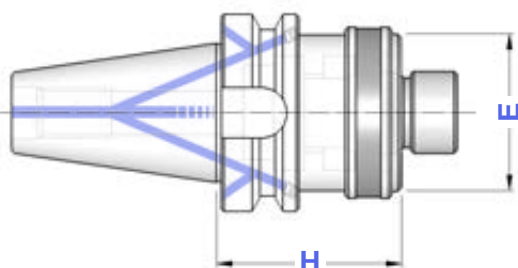


TIPO	FORMA A		E				
	Art.	H					
BT 40 - ISO 30/TC 30/BT 30	4180	63	50	7423	7410	0177	4570
BT 40 - ISO 40/TC 40/BT 40	8707	100	68	7424	7411	0179	4571
BT 50 - ISO 40/TC 40/BT 40	4273	70	68	7424	7411	0179	4571
BT 50 - ISO 50/TC 50/BT 50	8708	120	100	7426	7417	0254	4780

BT

RIDUZIONI DA BT AD HSK A+C
BT TO HSK A+C ADAPTERS

FORMA B (AD+B)



TIPO	FORMA B		
	Art.	H	E
BT 40 - HSK50 A+C	8709	60	50
BT 40 - HSK63 A+C	8710	80	63
BT 50 - HSK63 A+C	8712	70	63

BT

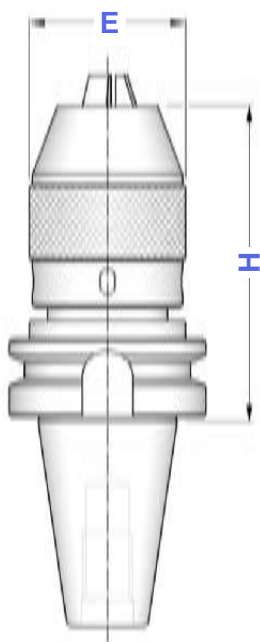
MANDRINI AUTOSERRANTI INTEGRALI
ROTAZIONE DESTRA
 MONOLITHIC DRILL CHUCKS - RIGHT SPIN

FORMA A

Balanced G 6,3
 12.000 rpm

FORMA A

TIPO	Art.	CAPACITA'	E	H			
BT 30 - DC 13	8593	1 ÷ 13	50	100	9016	9021	2370
BT 40 - DC 13	4392	1 ÷ 13	50	95	9016	9021	2370
BT 40 - DC 16	4393	3 ÷ 16	57	116	9017	9023	2371
BT 50 - DC 13	4394	1 ÷ 13	50	110	9016	9021	2370
BT 50 - DC 16	4395	3 ÷ 16	57	110	9017	9023	2371



Precisione di rotazione: 0,05 mm
 Runout accuracy: 0,05 mm


BT

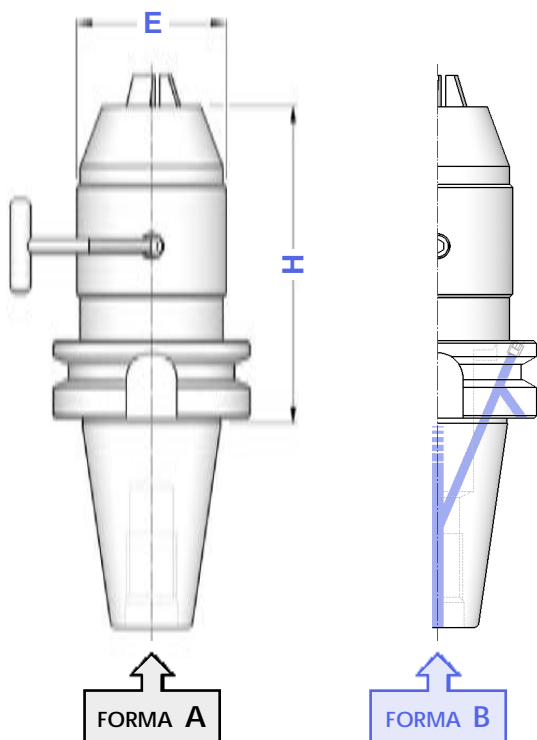
MANDRINI AUTOSERRANTI INTEGRALI
ROTAZIONE DESTRA E SINISTRA
 MONOLITHIC DRILL CHUCKS - RIGHT & LEFT SPIN

FORMA A**FORMA B (AD+B)**

Balanced G 6,3
 12.000 rpm

FORMA A **FORMA B**

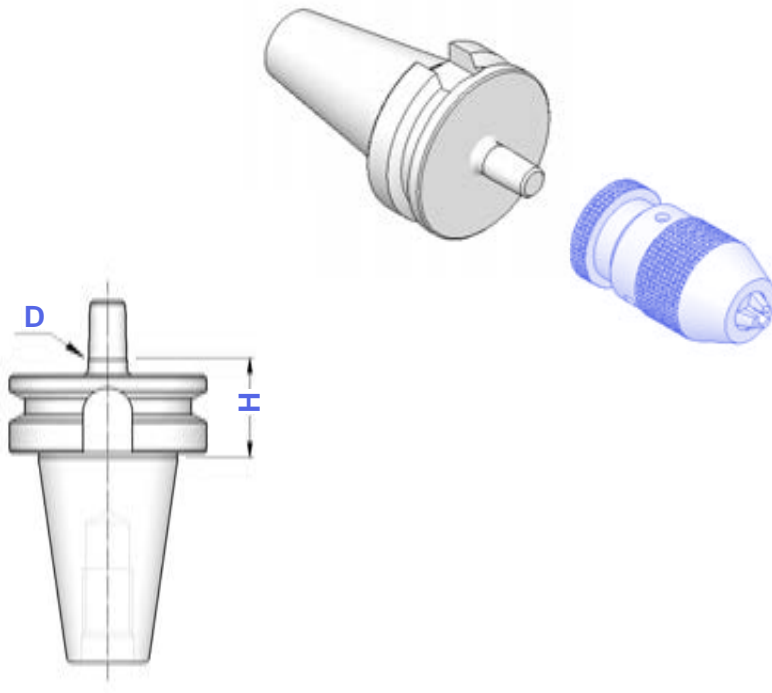
TIPO	Art.	Art.	CAPACITA'	E	H	
BT 30 - DCU 13	8594	—	1 ÷ 13	50	110	2372
BT 40 - DCU 13	8595	8599	1 ÷ 13	50	98	2372
BT 40 - DCU 16	8596	8600	3 ÷ 16	50	103	
BT 50 - DCU 13	8597	8601	1 ÷ 13	50	109	2372
BT 50 - DCU 16	8598	8602	3 ÷ 16	50	114	







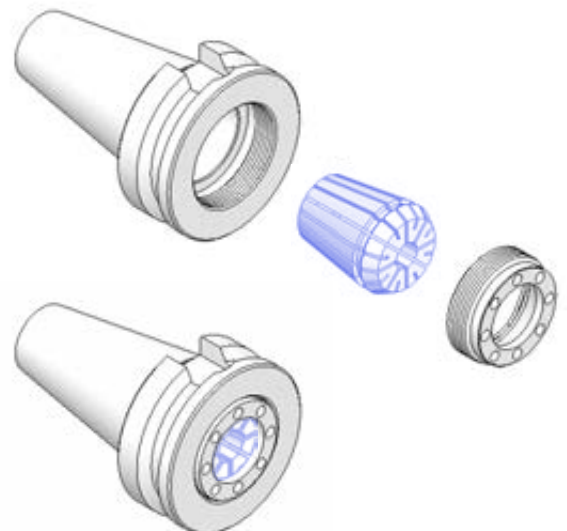
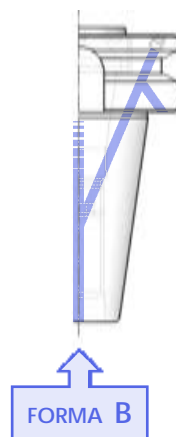
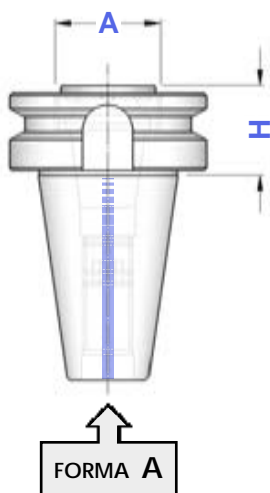
Precisione di rotazione: 0,05 mm
 Runout accuracy: 0,05 mm

BT
ATTACCHI PER MANDRINI PORTAPUNTA DIN 238
SHANKS FOR DRILL CHUCKS DIN 238 TYPE
FORMA A
 Balanced G 6,3
 8.000 rpm
FORMA A

TIPO	Art.	D	H
BT 30 - B12	3862	12,065	40
BT 30 - B16	3994	15,733	40
BT 40 - B12	3865	12,065	40
BT 40 - B16	3866	15,733	40
BT 40 - B18	3995	17,780	40
BT 50 - B16	3996	15,733	50
BT 50 - B18	3997	17,780	50

**BT**
PORTAPINZA ER EXTRACORTI
ER - DIN 6499 COLLET CHUCKS WITH INSIDE NUT
FORMA A (AD)**FORMA B (AD+B)**
 Balanced G 6,3
 12.000 rpm

TIPO	FORMA A	FORMA B	H	A	CAPACITA'				
	Art.	Art.							
BT 40 - ER25 GA	8041	8042	29	M 32 x1,5	1 ÷ 16	0073	2870	3172	0996
BT 40 - ER32 GA	3067	—	29	M 40 x1,5	2 ÷ 20	0073	2871	3173	0988
BT 50 - ER32 GA	3068	8043	40	M 40 x1,5	2 ÷ 20	0191	2871	3173	0988



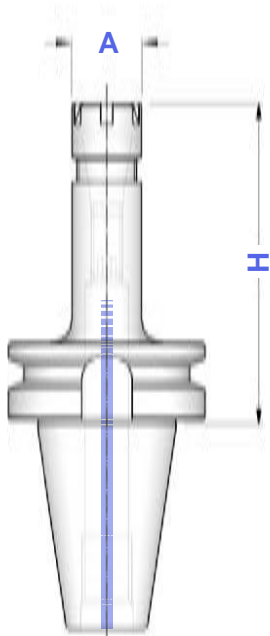
BT**PORTAPINZE ER - GHIERA MINI**
ER - DIN 6499 COLLET CHUCKS WITH MINI NUT**FORMA A (AD)****FORMA B (AD+B)**

Balanced	G 6,3
≤ H100	12.000 rpm
> H100	8.000 rpm

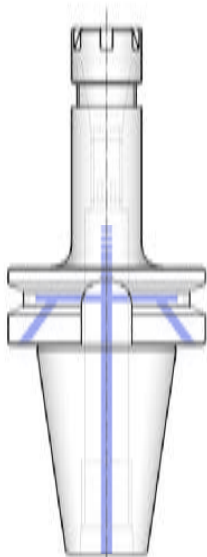
FORMA	FORMA
A	B



TIPO	Art.	Art.	A	CAPACITA'				
BT 30 - ER 11 GM /H 80	3329	—	16	1 ÷ 7	0181	0432	5718	5573
BT 30 - ER 16 GM /H 80	3039	—	22	1 ÷ 10	0183	1229	5719	0364
BT 30 - ER 16 GM /H 120	3454	—						
BT 40 - ER 11 GM /H 70	3271	4855	16	1 ÷ 7	0181	0432	5718	5573
BT 40 - ER 11 GM /H 100	3174	4856						
BT 40 - ER 11 GM /H 130	3272	4857						
BT 40 - ER 11 GM /H 160	4687	4858						
BT 40 - ER 16 GM /H 70	3455	4859	22	1 ÷ 10	0186	1229	5719	0364
BT 40 - ER 16 GM /H 100	3456	4860						
BT 40 - ER 16 GM /H 130	3457	4861						
BT 40 - ER 16 GM /H 160	4688	4862						
BT 40 - ER 16 GM /H 200	4781	4812						
BT 40 - ER 20 GM /H 70	3041	4501	28	1 ÷ 13	0188	1230	5720	0787
BT 40 - ER 20 GM /H 100	3461	4863						
BT 40 - ER 20 GM /H 130	3458	4864						
BT 40 - ER 20 GM /H 160	4689	4865						
BT 40 - ER 20 GM /H 200	4782	4813						
BT 40 - ER 25 GM /H 70	3043	4656	35	1 ÷ 16	0190	1231	5721	0996
BT 40 - ER 25 GM /H 100	3175	4866						
BT 40 - ER 25 GM /H 130	4690	4867						
BT 40 - ER 25 GM /H 160	3459	4868						
BT 40 - ER 25 GM /H 200	3460	4814						
BT 50 - ER 16 GM /H 130	3463	4869	22	1 ÷ 10	0186	1229	5719	0364
BT 50 - ER 16 GM /H 160	3494	4833						
BT 50 - ER 16 GM /H 200	3495	4834						
BT 50 - ER 20 GM /H 130	3464	4870	28	1 ÷ 13	0188	1230	5720	0787
BT 50 - ER 20 GM /H 160	3045	4657						
BT 50 - ER 20 GM /H 200	3048	4658						
BT 50 - ER 25 GM /H 130	3051	4659	35	1 ÷ 16	0190	1231	5721	0996
BT 50 - ER 25 GM /H 160	3462	4871						
BT 50 - ER 25 GM /H 200	3061	4660						



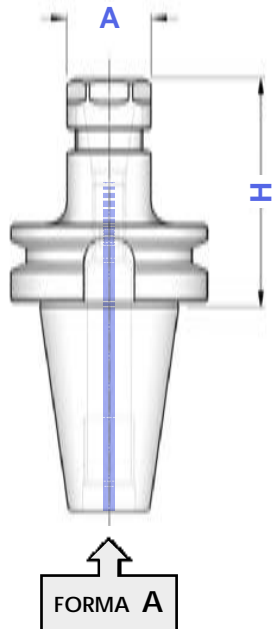
↑
FORMA A







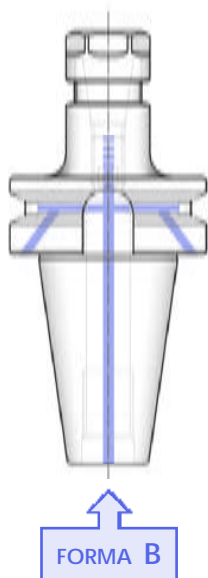
↑
FORMA B

BT**PORTAPINZE ER - GHIERA ESAGONALE**
ER - DIN 6499 COLLET CHUCKS WITH HEXAGONAL NUT**FORMA A (AD)****FORMA B (AD+B)**

Balanced	G 6,3
≤ H100	12.000 rpm
> H100	8.000 rpm

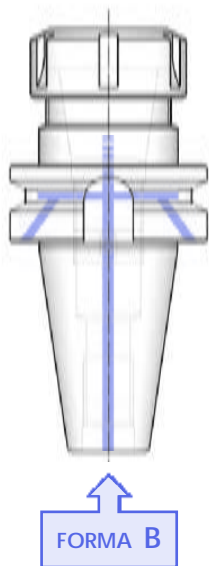
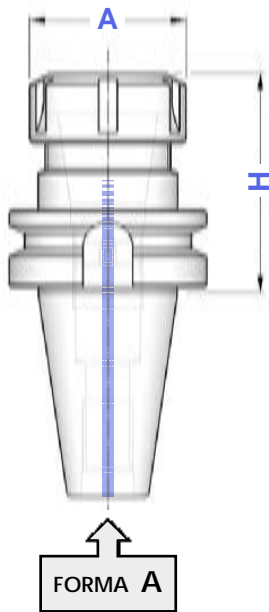


TIPO	FORMA	FORMA	A	CAPACITA'				
	A	B						
BT 30 - ER 16 GE/H 55 BT 30 - ER 16 GE/H100	8084 8085	—	28	1 ÷ 10	0183	1214	2906	0364
BT 30 - ER 20 GE/H 55 BT 30 - ER 20 GE/H100	8086 8087	—	34	1 ÷ 13	0183	1215	2907	0787
BT 40 - ER 11 GE/H 70 BT 40 - ER 11 GE/H100 BT 40 - ER 11 GE/H130 BT 40 - ER 11 GE/H160	3447 3448 3449 3450	4843 4844 4845 4846	19	1 ÷ 7	0181	1157	2905	5573
BT 40 - ER 16 GE/H 70 BT 40 - ER 16 GE/H100 BT 40 - ER 16 GE/H130 BT 40 - ER 16 GE/H160 BT 40 - ER 16 GE/H200	8088 8089 8090 8091 8092	8104 8105 8106 8107 8108	28	1 ÷ 10	0186	1214	2906	0364
BT 40 - ER 20 GE/H 70 BT 40 - ER 20 GE/H100 BT 40 - ER 20 GE/H130 BT 40 - ER 20 GE/H160 BT 40 - ER 20 GE/H200	8093 8094 8095 8096 8097	8109 8110 8111 8112 8113	34	1 ÷ 13	0188	1215	2907	0787
BT 50 - ER 16 GE/H100 BT 50 - ER 16 GE/H160 BT 50 - ER 16 GE/H200	8098 8099 8100	8114 8115 8116	28	1 ÷ 10	0186	1214	2906	0364
BT 50 - ER 20 GE/H100 BT 50 - ER 20 GE/H160 BT 50 - ER 20 GE/H200	8101 8102 8103	8117 8118 8119	34	1 ÷ 13	0188	1215	2907	0787



BT**PORTAPINZE ER - GHIERA STANDARD**
ER - DIN 6499 COLLET CHUCKS WITH STANDARD NUT**FORMA A (AD)****FORMA B (AD+B)**

Balanced	G 6,3
≤ H100	12.000 rpm
> H100	8.000 rpm

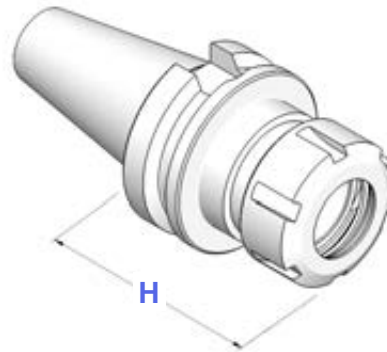


TIPO	FORMA	FORMA	A	CAPACITA'				
	A	B						
BT 30 - ER16/H 55	3465	---	32	1 ÷ 10	0183	4993	3698	0364
BT 30 - ER16/H 100	3438	---						
BT 30 - ER20/H 55	3274	---	35	1 ÷ 13	0183	4994	3699	0787
BT 30 - ER20/H 100	3439	---						
BT 30 - ER25/H 55	3250	---	42	1 ÷ 16	0190	4995	3669	0996
BT 30 - ER25/H 100	3267	---						
BT 30 - ER32/H 60	3251	---	50	2 ÷ 20	0190	4996	3670	0988
BT 30 - ER32/H 100	3252	---						
BT 40 - ER16/H 70	3468	4872	32	1 ÷ 10	0186	4993	3698	0364
BT 40 - ER16/H 100	3469	4873						
BT 40 - ER16/H 130	3497	4847						
BT 40 - ER16/H 160	3470	4874						
BT 40 - ER16/H 200	3498	4852						
BT 40 - ER20/H 70	3257	4875	35	1 ÷ 13	0188	4994	3699	0787
BT 40 - ER20/H 100	3580	4876						
BT 40 - ER20/H 130	3113	4853						
BT 40 - ER20/H 160	3114	4877						
BT 40 - ER20/H 200	3499	4854						
BT 40 - ER25/H 70	3258	4878	42	1 ÷ 16	0190	4995	3669	0996
BT 40 - ER25/H 100	0336	4879						
BT 40 - ER25/H 130	0337	4880						
BT 40 - ER25/H 160	3115	4881						
BT 40 - ER25/H 200	3183	4811						
BT 40 - ER32/H 70	3184	4882	50	2 ÷ 20	0191	4996	3670	0988
BT 40 - ER32/H 100	3259	4883						
BT 40 - ER32/H 130	3116	4884						
BT 40 - ER32/H 160	3260	4885						
BT 40 - ER32/H 200	3117	4886						
BT 40 - ER40/H 70	3261	4887	63	3 ÷ 30	0195	4997	3671	0821
BT 40 - ER40/H 100	3262	4888						
BT 40 - ER40/H 130	3263	4889						
BT 40 - ER40/H 160	3264	4890						
BT 40 - ER40/H 200	3118	4891						
BT 40 - ER50/H 85	3265	4931	78	6 ÷ 34	0191	4998	3668	4055
BT 50 - ER16/H 100	3474	4892	32	1 ÷ 10	0186	4993	3698	0364
BT 50 - ER16/H 160	3475	4893						
BT 50 - ER16/H 200	3488	4957						
BT 50 - ER20/H 100	3119	4894	35	1 ÷ 13	0188	4994	3699	0787
BT 50 - ER20/H 160	3120	4895						
BT 50 - ER20/H 200	3581	4958						
BT 50 - ER25/H 80	3582	4896	42	1 ÷ 16	0190	4995	3669	0996
BT 50 - ER25/H 100	3583	4897						
BT 50 - ER25/H 160	3584	4898						
BT 50 - ER25/H 200	3585	4959						
BT 50 - ER32/H 80	3275	4899	50	2 ÷ 20	0191	4996	3670	0988
BT 50 - ER32/H 100	3273	4900						
BT 50 - ER32/H 130	3276	4901						
BT 50 - ER32/H 160	3277	4902						
BT 50 - ER32/H 200	3278	4903						
BT 50 - ER32/H 250	3400	4961						
BT 50 - ER40/H 80	3279	4904	63	3 ÷ 30	0195	4997	3671	0821
BT 50 - ER40/H 100	3472	4905						
BT 50 - ER40/H 130	3280	4906						
BT 50 - ER40/H 160	3281	4907						
BT 50 - ER40/H 200	3282	4908						
BT 50 - ER50/H 100	3473	4999	78	6 ÷ 34	0195	4998	3668	4055
BT 50 - ER50/H 160	8046	8047						

KIT

CASSETTE KIT CON PORTAPINZE ER - GHIERA STANDARD

EQUIPMENT BOXES WITH DIN 6499 COLLET CHUCKS WITH STANDARD NUT



CASSETTE CON SERIE RIDOTTA DI PINZE ER, MANDRINO FORMA A E CHIAVE

EQUIPMENT BOXES WITH REDUCED SET OF ER COLLETS



FORMA

A



TIPO	Art.				
KIT Rid BT 30/H 55 - ER 25	7784	3250	3695	3669	0996: $\varnothing 4 - 6 - 8 - 10 - 12 - 16$
KIT Rid BT 30/H 60 - ER 32	7785	3251	3695	3670	0988: $\varnothing 4 - 6 - 8 - 10 - 12 - 16 - 20$
KIT Rid BT 40/H 70 - ER 25	7786	3258	3695	3669	0996: $\varnothing 4 - 6 - 8 - 10 - 12 - 16$
KIT Rid BT 40/H 70 - ER 32	7787	3184	3695	3670	0988: $\varnothing 4 - 6 - 8 - 10 - 12 - 16 - 20$
KIT Rid BT 40/H 70 - ER 40	7788	3261	3695	3671	0821: $\varnothing 4 - 6 - 8 - 10 - 12 - 16 - 20 - 25$
KIT Rid BT 50/H 80 - ER 32	7789	3275	3695	3670	0988: $\varnothing 4 - 6 - 8 - 10 - 12 - 16 - 20$
KIT Rid BT 50/H 80 - ER 40	7790	3279	3695	3671	0821: $\varnothing 4 - 6 - 8 - 10 - 12 - 16 - 20 - 25$

CASSETTE CON SERIE COMPLETA DI PINZE ER, MANDRINO FORMA A E CHIAVE

EQUIPMENT BOXES WITH COMPLETE SET OF ER COLLETS



FORMA

A



TIPO	Art.				
KIT BT 30/H 55 - ER 25	7791	3250	3695	3669	0996: $\varnothing 2 \div 16$ (15 Pinze)
KIT BT 30/H 60 - ER 32	7792	3251	3695	3670	0988: $\varnothing 3 \div 20$ (18 Pinze)
KIT BT 40/H 70 - ER 25	7793	3258	3695	3669	0996: $\varnothing 2 \div 16$ (15 Pinze)
KIT BT 40/H 70 - ER 32	7794	3184	3695	3670	0988: $\varnothing 3 \div 20$ (18 Pinze)
KIT BT 40/H 70 - ER 40	7795	3261	3695	3671	0821: $\varnothing 4 \div 26$ (23 Pinze)
KIT BT 50/H 80 - ER 32	7796	3275	3695	3670	0988: $\varnothing 3 \div 20$ (18 Pinze)
KIT BT 50/H 80 - ER 40	7797	3279	3695	3671	0821: $\varnothing 4 \div 26$ (23 Pinze)

BT**PORTAPINZE ER - GHIERA RALLA GIREVOLE**

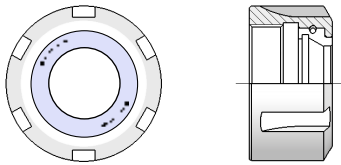
ER - DIN 6499 COLLET CHUCKS WITH ROTARY RING NUT

FORMA A (AD)**FORMA B (AD+B)**

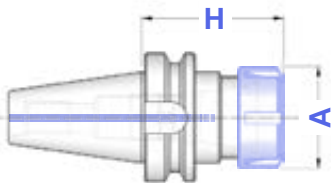
Balanced	G 6,3
≤ H100	12.000 rpm
> H100	8.000 rpm

GHIERA con RALLA GIREVOLE**CARATTERISTICHE E VANTAGGI**

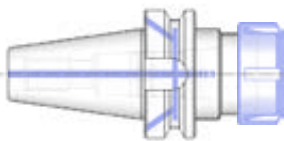
- Aumenta sensibilmente la forza di serraggio della pinza.
- Evita la torsione della pinza riducendone l'attrito con la sua sede e conseguentemente ne preserva la precisione.
- E' intercambiabile con le normali ghiera standard ed esagonali.

**ROTARY RING NUT****CHARACTERISTICS AND ADVANTAGES**





- Collet clamping force is sensitively increased.
- Avoids collet torsion reducing friction with its seat and consequently preserves its accuracy.
- Is interchangeable with standard and hexagonal nuts.




FORMA A
CON GHIERA GC

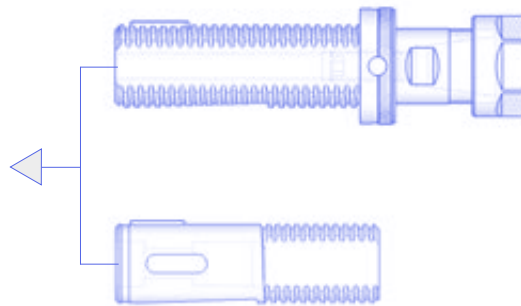
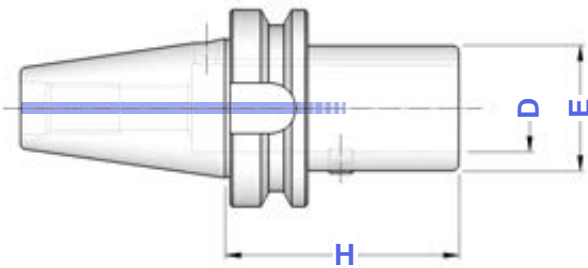
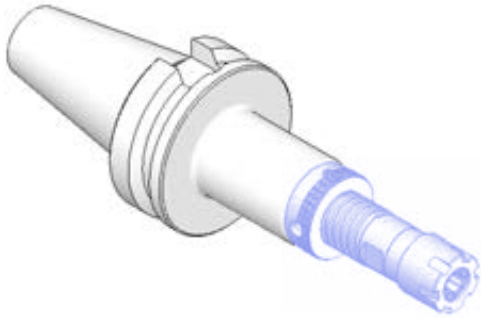





FORMA B
CON GHIERA GC

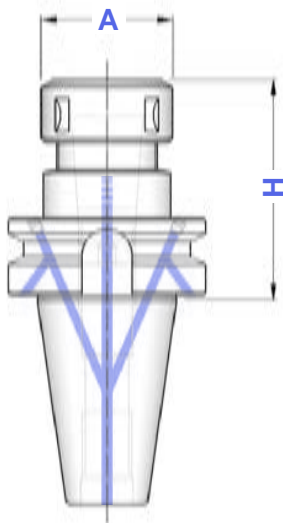
TIPO	FORMA	FORMA	A	CAPACITA'				
	A	B						
BT 30 - ER 16 GC/H 55	8226	---	32	1 ÷ 10	0183	4954	3698	0364
BT 30 - ER 16 GC/H100	8227	---						
BT 30 - ER 20 GC/H 55	8228	---	35	1 ÷ 13	0183	4955	3699	0787
BT 30 - ER 20 GC/H100	8229	---						
BT 30 - ER 25 GC/H 55	8230	---	42	1 ÷ 16	0190	3697	3669	0996
BT 30 - ER 25 GC/H100	8231	---						
BT 30 - ER 32 GC/H 60	8232	---	50	2 ÷ 20	0190	2911	3670	0988
BT 30 - ER 32 GC/H100	8233	---						
BT 40 - ER 16 GC/H 70	8234	8283	32	1 ÷ 10	0186	4954	3698	0364
BT 40 - ER 16 GC/H100	8235	8284						
BT 40 - ER 16 GC/H130	8236	8285						
BT 40 - ER 16 GC/H160	8237	8286						
BT 40 - ER 16 GC/H200	8238	8287						
BT 40 - ER 20 GC/H 70	8239	8288						
BT 40 - ER 20 GC/H100	8240	8289						
BT 40 - ER 20 GC/H130	8241	8290						
BT 40 - ER 20 GC/H160	8242	8291						
BT 40 - ER 20 GC/H200	8243	8292						
BT 40 - ER 25 GC/H 70	8244	8293	42	1 ÷ 16	0190	3697	3669	0996
BT 40 - ER 25 GC/H100	8245	8294						
BT 40 - ER 25 GC/H130	8246	8295						
BT 40 - ER 25 GC/H160	8247	8296						
BT 40 - ER 25 GC/H200	8248	8297						
BT 40 - ER 32 GC/H 70	8249	8298						
BT 40 - ER 32 GC/H100	8250	8299						
BT 40 - ER 32 GC/H130	8251	8300						
BT 40 - ER 32 GC/H160	8252	8301						
BT 40 - ER 32 GC/H200	8253	8302						
BT 40 - ER 40 GC/H 70	8254	8303	63	3 ÷ 30	0195	2912	3671	0821
BT 40 - ER 40 GC/H100	8255	8304						
BT 40 - ER 40 GC/H130	8256	8305						
BT 40 - ER 40 GC/H160	8257	8306						
BT 40 - ER 40 GC/H200	8258	8307						
BT 50 - ER 16 GC/H100	8260	8309	32	1 ÷ 10	0186	4954	3698	0364
BT 50 - ER 16 GC/H160	8261	8310						
BT 50 - ER 16 GC/H200	8262	8311						
BT 50 - ER 20 GC/H100	8263	8312	35	1 ÷ 13	0188	4955	3699	0787
BT 50 - ER 20 GC/H160	8264	8313						
BT 50 - ER 20 GC/H200	8265	8314						
BT 50 - ER 25 GC/H 80	8266	8315	42	1 ÷ 16	0190	3697	3669	0996
BT 50 - ER 25 GC/H100	8267	8316						
BT 50 - ER 25 GC/H160	8268	8317						
BT 50 - ER 25 GC/H200	8269	8318						
BT 50 - ER 32 GC/H 80	8270	8319	50	2 ÷ 20	0191	2911	3670	0988
BT 50 - ER 32 GC/H100	8271	8320						
BT 50 - ER 32 GC/H130	8272	8321						
BT 50 - ER 32 GC/H160	8273	8322						
BT 50 - ER 32 GC/H200	8274	8323						
BT 50 - ER 32 GC/H250	8275	8324						
BT 50 - ER 40 GC/H 80	8276	8325	63	3 ÷ 30	0195	2912	3671	0821
BT 50 - ER 40 GC/H100	8277	8326						
BT 50 - ER 40 GC/H130	8278	8327						
BT 50 - ER 40 GC/H160	8279	8328						
BT 50 - ER 40 GC/H200	8280	8329						

BT**PORTA MANDRINI CON ATTACCO TRAPEZIO DIN 6327**
AUTOMOTIVES SHANK HOLDERS ACCORDING TO DIN 6327**FORMA A (AD)**Balanced G 6,3
8.000 rpm**FORMA A**

TIPO	Art.	D	H	E	
BT 40 - TR 28	3955	28	70	40	0021
BT 40 - TR 36	3956	36	120	50	0021
BT 50 - TR 28	3960	28	100	40	0021
BT 50 - TR 36	3961	36	100	50	0021
BT 50 - TR 48	3962	48	105	67	0060

**BT****MANDRINI PER PINZE EOC DIN 6388**
DIN 6388 COLLET CHUCKS**FORMA B (AD+B)**Balanced G 6,3
≤ H100 12.000 rpm
> H100 8.000 rpm**FORMA B**



TIPO	Art.	A	CAPACITA'			
BT 40 - EOC 16 / H 70	8726	43	2 ÷ 16	4067	2883	0768
BT 40 - EOC 16 / H 100	8727					
BT 40 - EOC 16 / H 130	8728					
BT 40 - EOC 25 / H 70	8729	60	2 ÷ 25	4068	2909	0769
BT 40 - EOC 25 / H 100	8730					
BT 40 - EOC 25 / H 130	8731					
BT 40 - EOC 32 / H 80	8732	72	3 ÷ 32	4069	2910	0770
BT 50 - EOC 16 / H 70	8733	43	2 ÷ 16	4067	2883	0768
BT 50 - EOC 16 / H 100	8734					
BT 50 - EOC 25 / H 85	8735	60	2 ÷ 25	4068	2909	0769
BT 50 - EOC 25 / H 100	8736					
BT 50 - EOC 25 / H 130	8737					
BT 50 - EOC 32 / H 90	8738	72	3 ÷ 32	4069	2910	0770
BT 50 - EOC 32 / H 130	8739					

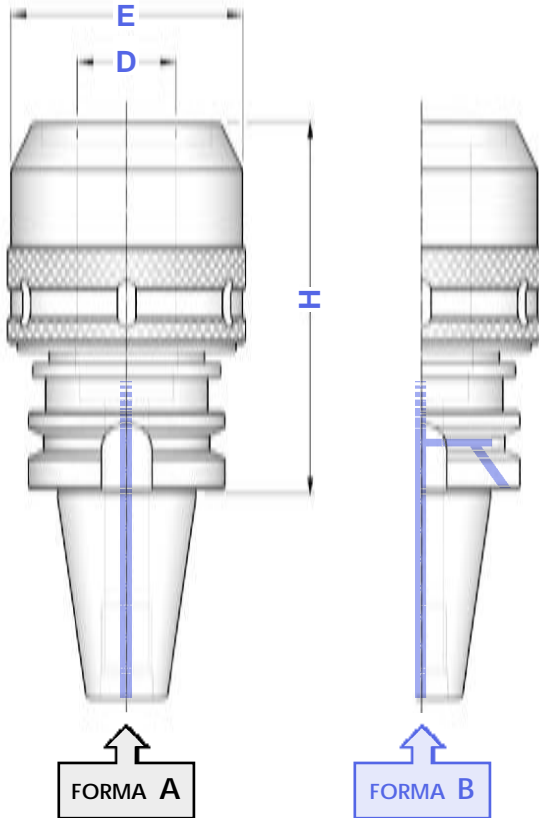


BT**MANDRINI A FORTE SERRAGGIO**
HIGH GRIP CHUCKS**FORMA A (AD)****FORMA B (AD+B)**

Balanced G 6,3

12.000 rpm

TIPO	FORMA A	FORMA B	D	E		
	Art.	Art.				
BT 40 - PC 20 / H 80	5114	5228	20	54	2900	0809
BT 40 - PC 20 / H 105	3504	—				
BT 40 - PC 32 / H 90	5115	5229	32	74	2910	0810
BT 40 - PC 32 / H 105	3505	—				
BT 40 - PC 32 / H 135	5133	—				
BT 50 - PC 20 / H 105	3506	—	20	54	2900	0809
BT 50 - PC 32 / H 105	3507	5234	32	74	2910	0810
BT 50 - PC 32 / H 135	5136	—				

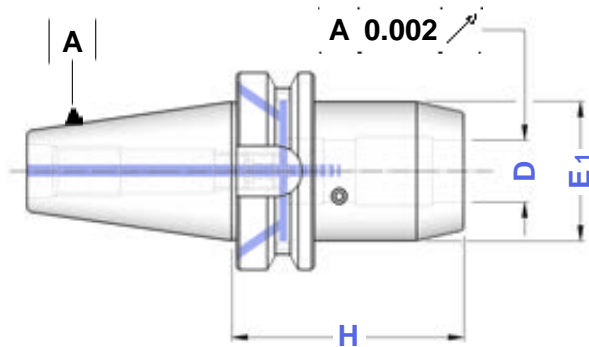
**CASSETTE CON MANDRINO
CHIAVE E PINZE**EQUIPMENT BOXES WITH COLLET CHUCK
WRENCH AND COLLETS**FORMA A****A**

TIPO	Art.				
KIT BT 40 - PC 20 / H 80	7547	5114	3695	2900	0809 ø 6 - 8 - 10 - 12 - 16
KIT BT 40 - PC 20 / H 105	7713	3504			
KIT BT 40 - PC 32 / H 90	7548	5115	3695	2910	0810 ø 6 - 8 - 10 - 12 - 16 - 20 - 25
KIT BT 40 - PC 32 / H 105	7716	3505			
KIT BT 50 - PC 20 / H 105	7717	3506	3695	2900	0809 ø 6 - 8 - 10 - 12 - 16
KIT BT 50 - PC 32 / H 105	7720	3507	3695	2910	0810 ø 6 - 8 - 10 - 12 - 16 - 20 - 25



BT**MANDRINI A SERRAGGIO IDRAULICO
TIPO CORTO**

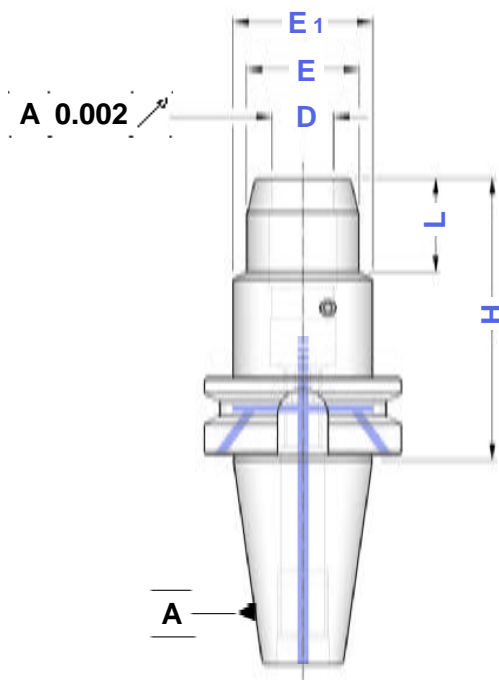
SHORT TYPE HYDRAULIC CHUCKS

FORMA B (AD+B)Balanced G 2,5
20.000 rpm**FORMA
B**

TIPO	Art.	D	H	E1	
BT 40 - HYDRO 20	5170	20	72	49,5	0521
BT 50 - HYDRO 32	5180	32	90	72,0	0522

BT**MANDRINI A SERRAGGIO IDRAULICO
TIPO ALLEGGERITO**

RELIEVED TYPE HYDRAULIC CHUCKS

FORMA B (AD+B)Balanced G 2,5
20.000 rpm**FORMA
B**

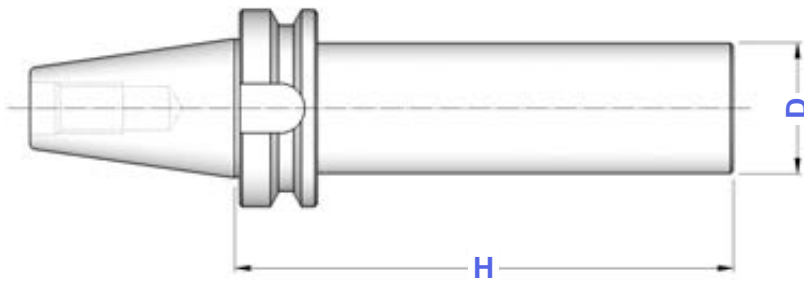
TIPO	Art.	D	H	E	E1	L
BT 40 - HYDRO 6/H 90	5171	6	90	26	49,5	29
BT 40 - HYDRO 8/H 90	5172	8	90	28	49,5	30
BT 40 - HYDRO 10/H 90	5173	10	90	30	49,5	35
BT 40 - HYDRO 12/H 90	5174	12	90	32	49,5	40
BT 40 - HYDRO 16/H 90	5175	16	90	38	49,5	45
BT 40 - HYDRO 20/H 90	5176	20	90	42	49,5	47
BT 40 - HYDRO 25/H 90	5177	25	90	55	52,0	50
BT 40 - HYDRO 32/H 90	5178	32	90	63	62,0	48
BT 50 - HYDRO 6/H 90	8508	6	90	26	49,5	29
BT 50 - HYDRO 8/H 90	8509	8	90	28	49,5	30
BT 50 - HYDRO 10/H 90	8510	10	90	30	49,5	34
BT 50 - HYDRO 12/H 90	8511	12	90	32	49,5	34
BT 50 - HYDRO 16/H 90	8512	16	90	38	49,5	35
BT 50 - HYDRO 20/H 90	5181	20	90	42	49,5	35
BT 50 - HYDRO 25/H 110	8513	25	110	55	63,0	48
BT 50 - HYDRO 32/H 110	8514	32	110	63	70,0	50

Applicazioni: consente il bloccaggio ad alta precisione di utensili a gambo cilindrico DIN 1835 Forma A e B, con tolleranza di gambo h 6 e rugosità Ra < 0,3 micron

Attenzione : non azionare il sistema idraulico se l'utensile non è inserito nel mandrino

Applications : allows high precision locking of DIN 1835 shank tools Form A and B, with shank tolerance h 6 and surface roughness Ra < 0,3 micron.

Warning : do not start Hydraulic System without any tool fit inside

BT**BARRE A STELO TENERO**
BLANK BARS**FORMA A****FORMA A**

TIPO	Art.	H	D
BT 40 - D. 40	4367	160	40
BT 40 - D. 50	4368	200	50
BT 40 - D. 63	4369	250	63
BT 50 - D. 63	4372	250	63
BT 50 - D. 80	4373	300	80

BARRE DI CONTROLLO
TEST ARBORS

TIPO	Art.	H	D
CONO 40 - D. 40 SC	2225	300	40
CONO 50 - D. 50 SC	2229	350	50

**Tolleranze della barra**

- Rettilinearità = 0,003
- Rotondità in rotazione = 0,003
- Cilindricità = 0,003

Bars tolerance

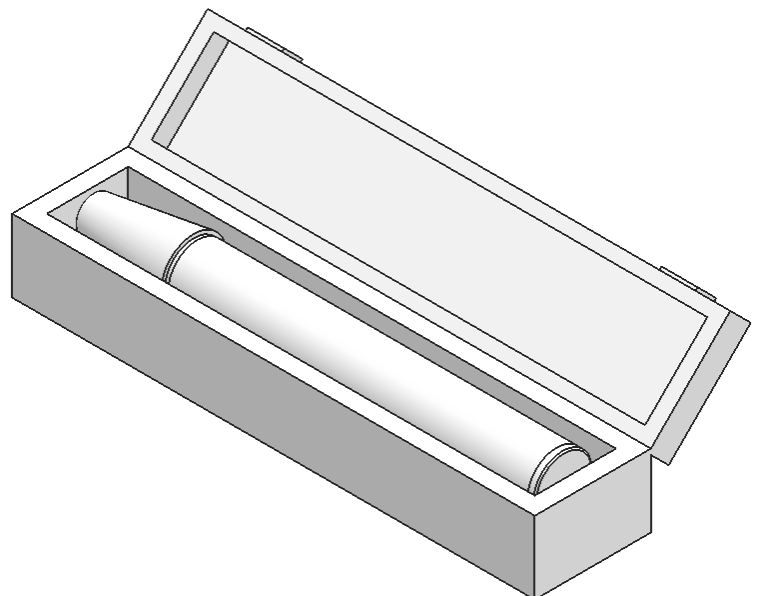
- Straightnes = 0,003
- Runout accuracy = 0,003
- Cylindricity = 0,003

Dati costruttivi

- Costruite in acciaio da cementazione certificato
- Cementate con profondità 0,4 - 0,5 mm
- Temperate, rinvenute, brunite
- Durezza HRC 58 ± 2, resistenza 800-1000 N/mm²
- Finitura di rettifica esterna
- Collaudate 100% con strumenti di misura certificati

Constructive Features

- Manufactured with casehardening steel
- Casehardened with depth 0,4 - 0,5 mm
- Hardened, tempered, black oxidized
- Hardnes HRC 58 ± 2, strenght 800-1000 N/mm²
- External grinding finish
- Tested 100% with certified measuring instruments



BT
PORTAFRESE WELDON TIPO EXTRACORTO
 SHORT TYPE END MILL HOLDERS FOR DIN 1835-B SHANKS
FORMA A (AD)**FORMA B (AD+B)**
 Balanced G 6,3
 12.000 rpm

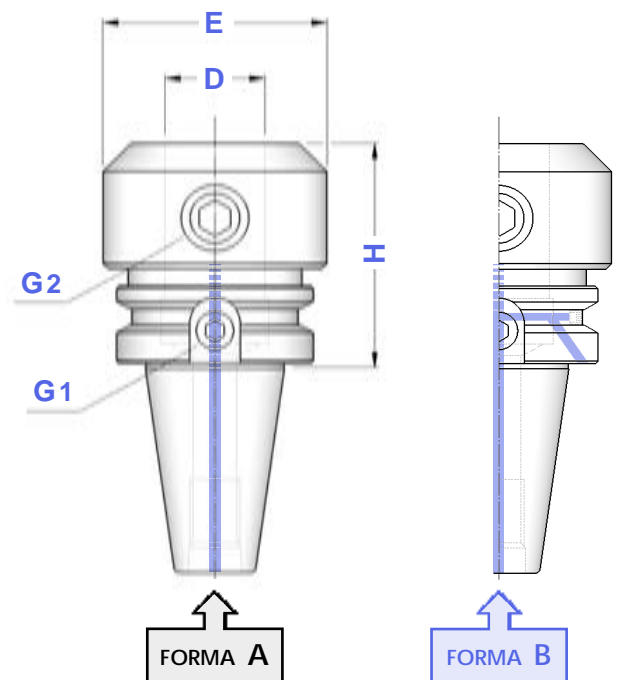
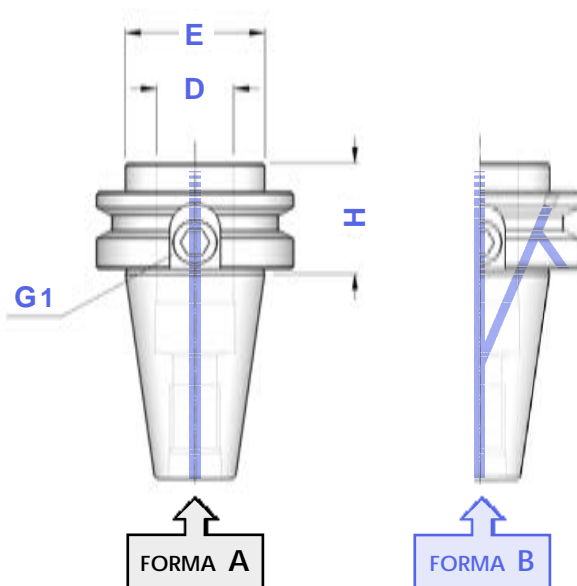
TIPO	FORMA	FORMA	D	H	E	Fig.	G1	G2
	A	B						
	Art.	Art.						
BT 40 - WE 12/H 35	3053	8469	12	35	44	1	4973	—
BT 40 - WE 14/H 35	8465	8470	14	35	44	1	0390	—
BT 40 - WE 16/H 35	3054	5122	16	35	44	1	0068	—
BT 40 - WE 18/H 35	8466	8471	18	35	44	1	0261	—
BT 40 - WE 20/H 35	3055	5123	20	35	44	1	0261	—
BT 40 - WE 25/H 35	3056	5124	25	35	44	1	0082	—
BT 40 - WE 25/H 60	4629	4554		60	49	2	0082	0076
BT 40 - WE 32/H 40	3069	4555	32	40	44	1	0074	—
BT 40 - WE 32/H 70	4630	4556		70	72	2	0082	4977
BT 50 - WE 16/H 44	3057	5125	16	44	70	1	4974	—
BT 50 - WE 18/H 44	8467	8472	18	44	70	1	4974	—
BT 50 - WE 20/H 44	3058	5126	20	44	70	1	4975	—
BT 50 - WE 25/H 44	3059	5127	25	44	70	1	4976	—
BT 50 - WE 32/H 44	3060	5128	32	44	70	1	4977	—
BT 50 - WE 40/H 44	8468	8473	40	44	70	1	0259	—

WELDON EXTRACORTO
 SHORT TYPE END MILL

Figura 1

WELDON EXTRACORTO
 SHORT TYPE END MILL

Figura 2

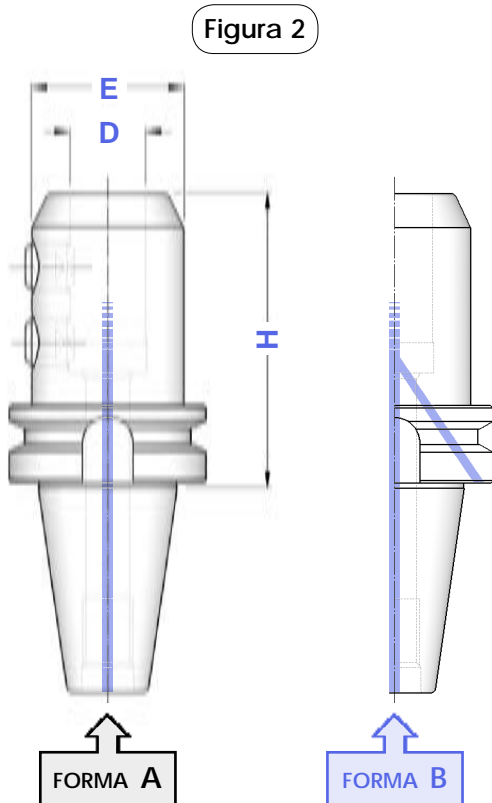
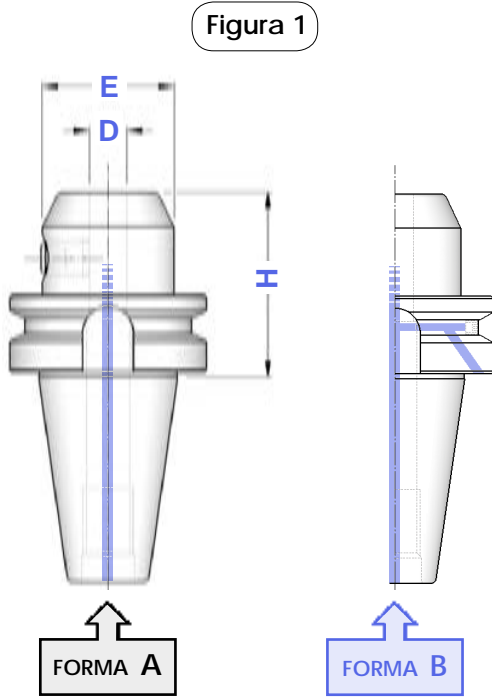


BT

PORTAFRESE WELDON
END MILL HOLDERS FOR DIN 1835-B SHANKS

FORMA A (AD)**FORMA B (AD+B)**

Balanced	G 6,3
≤ H100	12.000 rpm
> H100	8.000 rpm



TIPO	FORMA	FORMA	D	H	E	Fig.	Fig.
	A	B					
BT 30 - WE 6/H 50	3740	—	6	50	25	1	4970
BT 30 - WE 8/H 50	3741	—	8	50	28	1	4971
BT 30 - WE 10/H 50	3742	—	10	50	35	1	4972
BT 30 - WE 12/H 55	3743	—	12	55	42	1	4973
BT 30 - WE 16/H 63	3744	—	16	63	48	1	4974
BT 30 - WE 20/H 70	3299	—	20	70	52	1	4975
BT 40 - WE 6/H 50	3752	4909	6	50	25	1	4970
BT 40 - WE 6/H 100	5057	5863		100			
BT 40 - WE 6/H 130	8004	8021		130			
BT 40 - WE 6/H 160	5564	5864		160			
BT 40 - WE 6/H 200	4253	4391		200			
BT 40 - WE 8/H 50	3753	4910	8	50	28	1	4971
BT 40 - WE 8/H 100	5058	5865		100			
BT 40 - WE 8/H 130	8005	8022		130			
BT 40 - WE 8/H 160	5565	5866		160			
BT 40 - WE 8/H 200	4254	4396		200			
BT 40 - WE 10/H 63	3754	4911	10	63	35	1	4972
BT 40 - WE 10/H 100	5059	5867		100			
BT 40 - WE 10/H 130	8006	8023		130			
BT 40 - WE 10/H 160	5566	5868		160			
BT 40 - WE 10/H 200	4255	4397		200			
BT 40 - WE 12/H 63	3755	4912	12	63	42	1	4973
BT 40 - WE 12/H 100	5060	5869		100			
BT 40 - WE 12/H 130	8007	8024		130			
BT 40 - WE 12/H 160	5567	5870		160			
BT 40 - WE 12/H 200	4262	4401		200			
BT 40 - WE 14/H 63	4557	4913	14	63	44	1	4973
BT 40 - WE 14/H 100	5061	5871		100			
BT 40 - WE 14/H 130	8008	8025		130			
BT 40 - WE 14/H 160	4268	4432		160			
BT 40 - WE 14/H 200	4269	4433		200			
BT 40 - WE 16/H 63	3756	4914	16	63	48	1	4974
BT 40 - WE 16/H 100	5062	5872		100			
BT 40 - WE 16/H 130	8009	8026		130			
BT 40 - WE 16/H 160	5063	5873		160			
BT 40 - WE 16/H 200	4270	4434		200			
BT 40 - WE 18/H 63	4558	4915	18	63	50	1	4974
BT 40 - WE 18/H 100	5064	5874		100			
BT 40 - WE 18/H 130	8010	8027		130			
BT 40 - WE 18/H 160	4271	4435		160			
BT 40 - WE 18/H 200	4272	4436		200			
BT 40 - WE 20/H 63	3757	4916	20	63	52	1	4975
BT 40 - WE 20/H 100	5066	5875		100			
BT 40 - WE 20/H 130	5067	4437		130			
BT 40 - WE 20/H 160	5068	5876		160			
BT 40 - WE 20/H 200	4274	4446		200			
BT 40 - WE 25/H 90	3758	4917	25	90	65	2	4976
BT 40 - WE 25/H 130	5069	4939		130			
BT 40 - WE 25/H 160	5070	4448		160			
BT 40 - WE 25/H 200	4358	4479		200			
BT 40 - WE 32/H 100	3759	4918	32	100	72	2	4977
BT 40 - WE 32/H 130	5071	4480		130			
BT 40 - WE 32/H 160	5072	4481		160			
BT 40 - WE 32/H 200	4359	4482		200			
BT 40 - WE 40/H 105	4559	4919	40	105	80	2	4977

segue ➡

TIPO	FORMA	FORMA	D	H	E	Fig.	
	A	B					
	Art.	Art.					
BT 50 - WE 6/H 63	3295	4920	6	63	25	1	4970
BT 50 - WE 6/H 100	5073	5877		100			
BT 50 - WE 6/H 130	8011	8028		130			
BT 50 - WE 6/H 160	5568	5878		160			
BT 50 - WE 6/H 200	4360	4485		200			
BT 50 - WE 8/H 63	3769	4921	8	63	28	1	4971
BT 50 - WE 8/H 100	5074	5879		100			
BT 50 - WE 8/H 130	8012	8029		130			
BT 50 - WE 8/H 160	5569	5880		160			
BT 50 - WE 8/H 200	4361	4497		200			
BT 50 - WE 10/H 70	3770	4922	10	70	35	1	4972
BT 50 - WE 10/H 100	5075	5907		100			
BT 50 - WE 10/H 130	8013	8030		130			
BT 50 - WE 10/H 160	5572	5908		160			
BT 50 - WE 10/H 200	4366	4498		200			
BT 50 - WE 12/H 80	3771	4923	12	80	42	1	4973
BT 50 - WE 12/H 100	5574	5912		100			
BT 50 - WE 12/H 130	8014	8031		130			
BT 50 - WE 12/H 160	5076	5909		160			
BT 50 - WE 12/H 200	4370	4499		200			
BT 50 - WE 14/H 80	4560	4924	14	80	44	1	4973
BT 50 - WE 14/H 100	4371	4500		100			
BT 50 - WE 14/H 130	8015	8032		130			
BT 50 - WE 14/H 160	4375	4502		160			
BT 50 - WE 14/H 200	4376	4503		200			
BT 50 - WE 16/H 80	3772	4925	16	80	48	1	4974
BT 50 - WE 16/H 100	5575	5913		100			
BT 50 - WE 16/H 130	8016	8033		130			
BT 50 - WE 16/H 160	5078	5910		160			
BT 50 - WE 16/H 200	4380	4523		200			
BT 50 - WE 18/H 80	4561	4926	18	80	50	1	4974
BT 50 - WE 18/H 100	4381	4524		100			
BT 50 - WE 18/H 130	8017	8034		130			
BT 50 - WE 18/H 160	4382	4525		160			
BT 50 - WE 18/H 200	4384	4526		200			
BT 50 - WE 20/H 80	3773	4927	20	80	52	1	4975
BT 50 - WE 20/H 100	5576	5914		100			
BT 50 - WE 20/H 130	8018	8035		130			
BT 50 - WE 20/H 160	5080	5911		160			
BT 50 - WE 20/H 200	4386	4527		200			
BT 50 - WE 25/H 100	3774	4928	25	100	65	2	4976
BT 50 - WE 25/H 130	8019	8036		130			
BT 50 - WE 25/H 160	5082	5915		160			
BT 50 - WE 25/H 200	4388	4528		200			
BT 50 - WE 32/H 105	3775	4929	32	105	72	2	4977
BT 50 - WE 32/H 130	8020	8037		130			
BT 50 - WE 32/H 160	5083	5916		160			
BT 50 - WE 32/H 200	4389	4529		200			
BT 50 - WE 40/H 120	3776	4930	40	120	80	2	4977
BT 50 - WE 40/H 160	5085	5917		160			
BT 50 - WE 40/H 200	4390	4530		200			
BT 50 - WE 50/H 125	3777	4552	50	125	100	2	4978

Figura 1

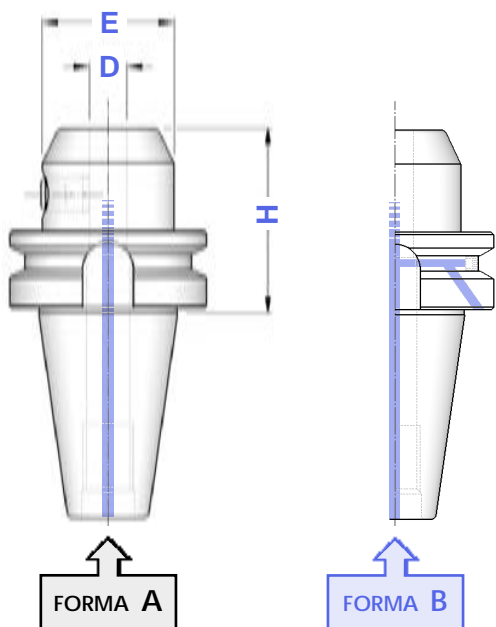
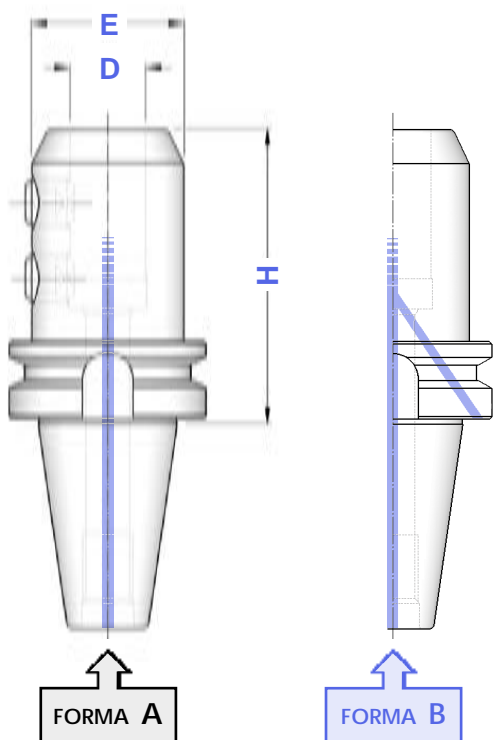


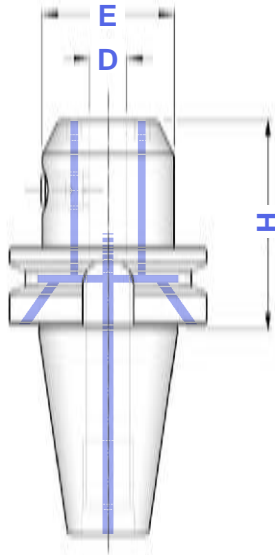
Figura 2



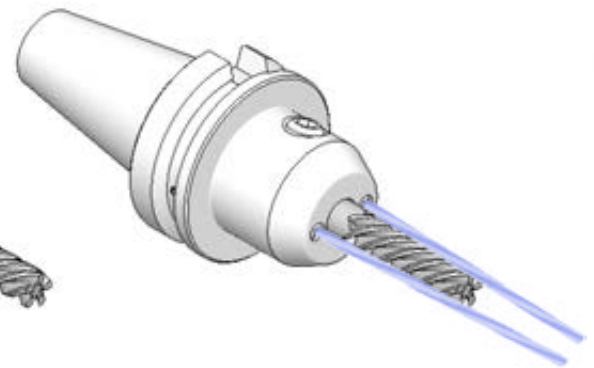
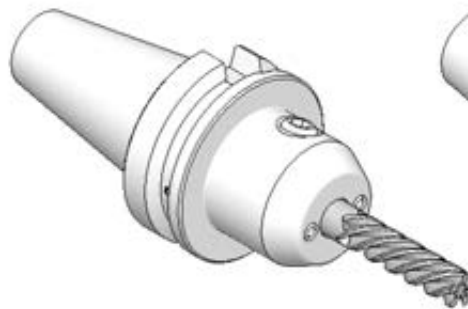
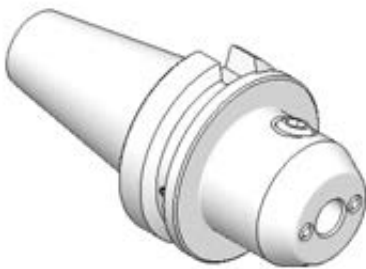
BT
PORTAFRESE WELDON CON SFERE DI LUBRIFICAZIONE
 TOOLHOLDERS FOR DIN 1835-B SHANKS WITH FRONT COOLANT
FORMA B (AD+B)

Balanced G 6,3

12.000 rpm

**FORMA B**

TIPO	Art.	D	H	E	
BT 40 - WEC 6/H 50	7872	6	50	25	4970
BT 40 - WEC 8/H 50	7873	8	50	28	4971
BT 40 - WEC 10/H 63	7874	10	63	35	4972
BT 40 - WEC 12/H 63	7875	12	63	42	4973
BT 40 - WEC 14/H 63	7876	14	63	44	4973
BT 40 - WEC 16/H 63	7877	16	63	48	4974
BT 40 - WEC 18/H 63	7878	18	63	50	4974
BT 40 - WEC 20/H 63	7879	20	63	52	4975
BT 40 - WEC 25/H 90	7880	25	90	65	4976
BT 40 - WEC 32/H 100	7881	32	100	72	4977
BT 40 - WEC 40/H 105	7882	40	105	80	4977
BT 50 - WEC 6/H 63	7883	6	63	25	4970
BT 50 - WEC 8/H 63	7884	8	63	28	4971
BT 50 - WEC 10/H 70	7885	10	70	35	4972
BT 50 - WEC 12/H 80	7886	12	80	42	4973
BT 50 - WEC 14/H 80	7887	14	80	44	4973
BT 50 - WEC 16/H 80	7888	16	80	48	4974
BT 50 - WEC 18/H 80	7889	18	80	50	4974
BT 50 - WEC 20/H 80	7890	20	80	52	4975
BT 50 - WEC 25/H 100	7891	25	100	65	4976
BT 50 - WEC 32/H 105	7892	32	105	72	4977
BT 50 - WEC 40/H 120	7893	40	120	80	4977



BT**MANDRINI PER UTENSILI ATTACCO WHISTLE NOTCH**

END MILL HOLDERS FOR DIN 1835-E SHANKS

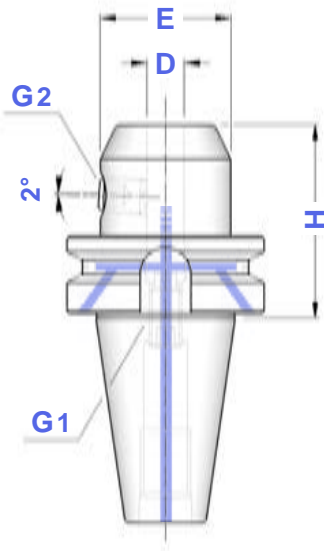
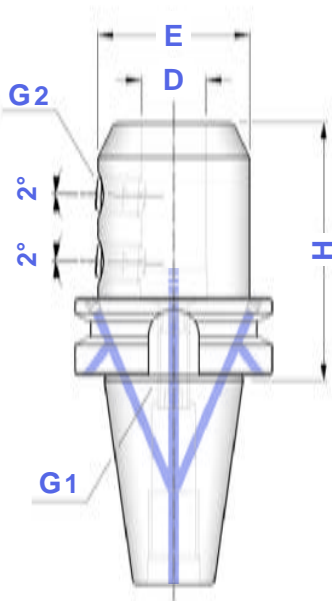
FORMA B (AD+B)

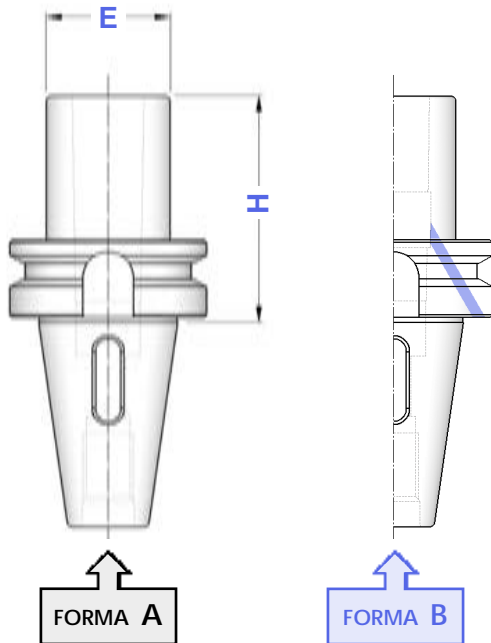
Balanced G 6,3

12.000 rpm

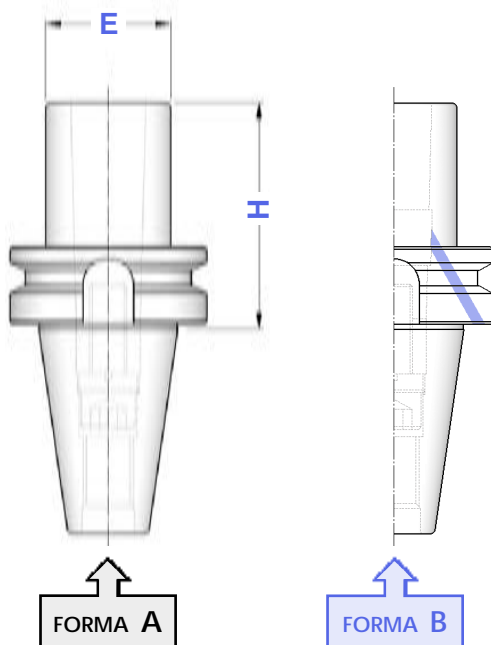
**FORMA
B**




TIPO	Art.	D	H	E	Fig.	G1	G2
BT 40 - WN 6 / H 50	4666	6	50	25	1	0233	4970
BT 40 - WN 8 / H 50	4667	8	50	28	1	0235	4971
BT 40 - WN 10 / H 63	4668	10	63	35	1	0238	4972
BT 40 - WN 12 / H 63	4669	12	63	42	1	0240	4973
BT 40 - WN 14 / H 63	4670	14	63	44	1	0240	4973
BT 40 - WN 16 / H 63	4671	16	63	48	1	0245	4974
BT 40 - WN 18 / H 63	4672	18	63	50	1	0245	4974
BT 40 - WN 20 / H 63	4673	20	63	52	1	0245	4975
BT 40 - WN 25 / H 90	4674	25	90	65	2	0212	4976
BT 40 - WN 32 / H 100	4675	32	100	72	2	0212	4977
BT 40 - WN 40 / H 105	4692	40	105	80	2	0212	4977
BT 50 - WN 6 / H 63	4676	6	63	25	1	0233	4970
BT 50 - WN 8 / H 63	4677	8	63	28	1	0235	4971
BT 50 - WN 10 / H 70	4678	10	70	35	1	0238	4972
BT 50 - WN 12 / H 80	4679	12	80	42	1	0240	4973
BT 50 - WN 14 / H 80	4680	14	80	44	1	0240	4973
BT 50 - WN 16 / H 80	4681	16	80	48	1	0245	4974
BT 50 - WN 18 / H 80	4682	18	80	50	1	0245	4974
BT 50 - WN 20 / H 80	4683	20	80	52	1	0245	4975
BT 50 - WN 25 / H 100	4684	25	100	65	2	0247	4976
BT 50 - WN 32 / H 105	4685	32	105	72	2	0247	4977
BT 50 - WN 40 / H 120	4686	40	120	80	2	0247	4977

Figura 1**Figura 2**

BT
RIDUZIONI A CONO MORSE PER PUNTE
 MORSE TAPER ADAPTERS FOR TWIST DRILLS DIN 228 FORM B SHANK
FORMA A**FORMA B**
 Balanced G 6,3
 8.000 rpm


TIPO	FORMA A	FORMA B	CM	H	E
	Art.	Art.			
BT 30 - CM 1 PUNTE	8346	—	1	50	25
BT 30 - CM 2 PUNTE	3796	—	2	60	32
BT 30 - CM 3 PUNTE	3883	—	3	90	40
BT 40 - CM 1 PUNTE	8347	4945	1	50	25
BT 40 - CM 2 PUNTE	8349	4962	2	60	32
BT 40 - CM 3 PUNTE	3783	4963	3	70	40
BT 40 - CM 4 PUNTE	3784	4964	4	95	48
BT 50 - CM 1 PUNTE	8352	—	1	45	25
BT 50 - CM 2 PUNTE	8354	4966	2	60	32
BT 50 - CM 3 PUNTE	8356	4967	3	65	40
BT 50 - CM 4 PUNTE	3793	4968	4	95	48
BT 50 - CM 5 PUNTE	3794	4969	5	120	63

BT
RIDUZIONI A CONO MORSE PER FRESE
 MORSE TAPER ADAPTERS FOR MILLING CUTTERS DIN 228 FORM A SHANK
FORMA A**FORMA B**
 Balanced G 6,3
 8.000 rpm


TIPO	FORMA A	FORMA B	CM	H	E			
	Art.	Art.						
BT 30 - CM 2 FRESE	3882	—	2	60	32	7448	7422	4569
BT 30 - CM 3 FRESE	3884	—	3	80	40	7402	7423	4570
BT 40 - CM 2 FRESE	3886	4932	2	50	32	7448	7422	4569
BT 40 - CM 3 FRESE	3887	4933	3	70	40	7403	7423	4570
BT 40 - CM 4 FRESE	3888	4934	4	95	48	7404	7424	4571
BT 50 - CM 2 FRESE	3801	4935	2	60	32	7448	7422	4569
BT 50 - CM 3 FRESE	2933	4936	3	65	40	7403	7423	4570
BT 50 - CM 4 FRESE	3890	4937	4	90	48	7407	7424	4571
BT 50 - CM 5 FRESE	3891	4956	5	120	63	7408	7425	4572

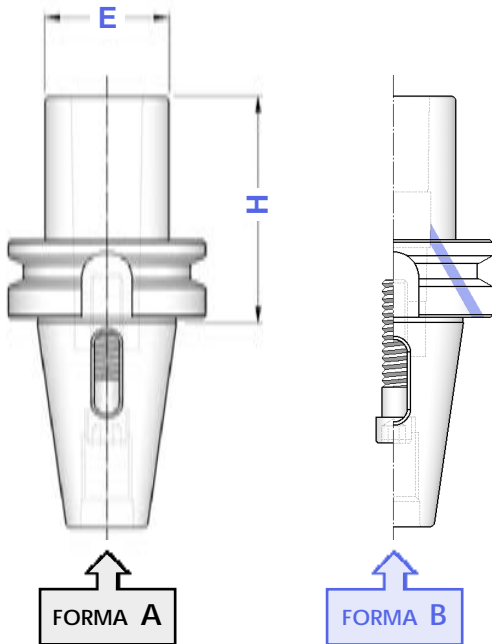
BT**RIDUZIONI A CONO MORSE PUNTE + FRESE
COMBinate**



COMBI MORSE TAPER ADAPTERS: TWIST DRILLS + MILLING CUTTERS

FORMA A**FORMA B**

Balanced G 6,3

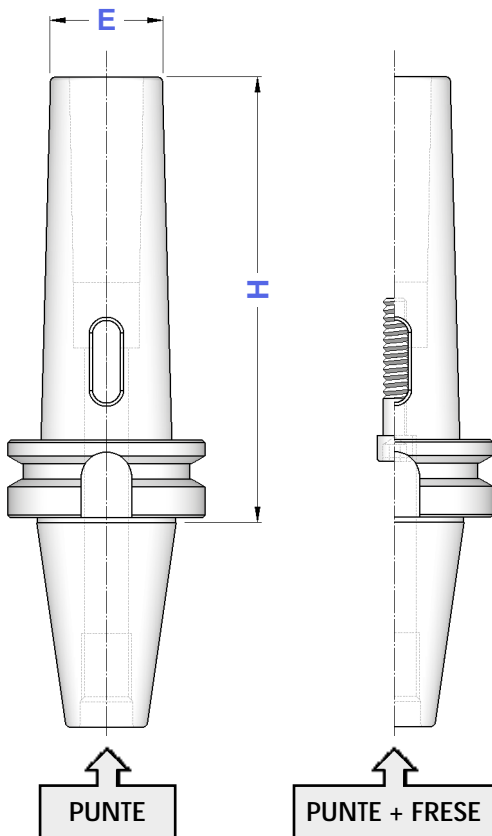
8.000 rpm





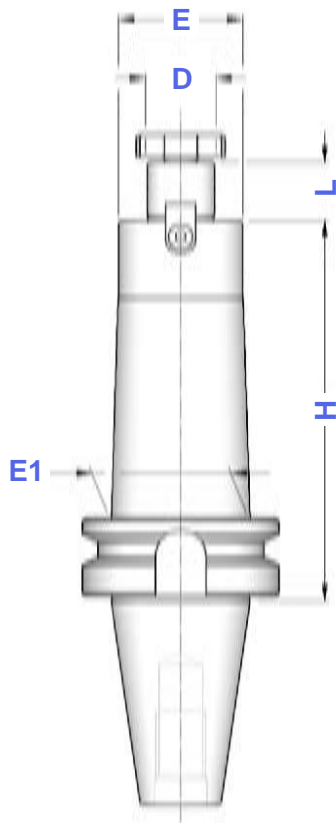
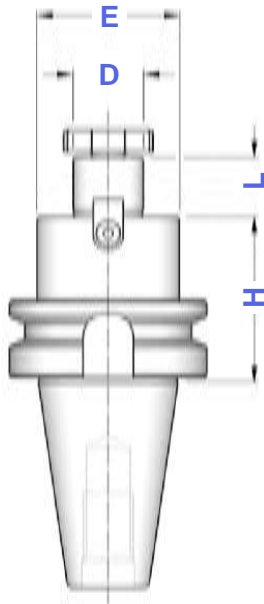
TIPO	FORMA A	FORMA B	CM	H	E		
	Art.	Art.					
BT 30 - CM 1 P+F	3795	—	1	50	25	7415	—
BT 30 - CM 2 P+F	3799	—	2	60	32	7400	0276
BT 30 - CM 3 P+F	3889	—	3	90	40	7418	0130
BT 40 - CM 1 P+F	3781	8747	1	50	25	7400	—
BT 40 - CM 2 P+F	3782	8748	2	60	32	7401	—
BT 40 - CM 3 P+F	8360	8749	3	70	40	7400	0130
BT 50 - CM 1 P+F	3790	—	1	45	25	7400	—
BT 50 - CM 2 P+F	3791	8750	2	60	32	7405	—
BT 50 - CM 3 P+F	3792	8751	3	65	40	7406	—
BT 50 - CM 4 P+F	8361	8752	4	95	48	7409	—
BT 50 - CM 5 P+F	8362	8753	5	120	63	7406	0131

BT**RIDUZIONI A CONO MORSE PER PUNTE E PUNTE + FRESE
TIPO PROLUNGATO**

EXTENDED MORSE TAPER ADAPTERS: TWIST DRILLS + MILLING CUTTERS

FORMA A

TIPO	PUNTE	PUNTE + FRESE	CM	H	E		
	Art.	Art.					
BT 40 - CM 1	8348	4258	1	115	18	7400	—
BT 40 - CM 2	8350	4259	2	125	25	7401	—
BT 40 - CM 3	8351	4260	3	140	33	7400	0130
BT 40 - CM 4	4261	—	4	165	40	—	—
BT 50 - CM 1	8353	4263	1	120	18	7400	—
BT 50 - CM 2	8355	4264	2	140	25	7405	—
BT 50 - CM 3	8357	4265	3	150	33	7406	—
BT 50 - CM 4	8358	4266	4	180	40	7409	—
BT 50 - CM 5	8359	4267	5	220	55	0055	0131

BT**PORTAFRESE FISSI**
DIN 6357 FACE MILL HOLDERS**FORMA A**Balanced G 6,3
8.000 rpm**FORMA
A**

TIPO	Art.	D	L	E	E1		
BT 30 - D.13 FISSO / H 35	8412	13	12	28	28	0482	—
BT 30 - D.16 FISSO / H 35	4152	16	17	38	38	4985	4562
BT 30 - D.22 FISSO / H 40	4154	22	19	48	48	4986	4563
BT 30 - D.27 FISSO / H 40	4156	27	21	58	58	4987	4564
BT 30 - D.32 FISSO / H 45	8413	32	24	58	58	4988	4565
BT 40 - D.13 FISSO / H 45	8414	13	12	28	28	0482	—
BT 40 - D.16 FISSO / H 45	4161	16	17	38	38	4985	4562
BT 40 - D.16 FISSO / H 100	5578						
BT 40 - D.16 FISSO / H 130	9420						
BT 40 - D.16 FISSO / H 160	8415						
BT 40 - D.16 FISSO / H 200	8416						
BT 40 - D.22 FISSO / H 45	4644	22	19	48	48	4986	4563
BT 40 - D.22 FISSO / H 100	5588						
BT 40 - D.22 FISSO / H 130	9421			46			
BT 40 - D.22 FISSO / H 160	5589						
BT 40 - D.22 FISSO / H 200	8417						
BT 40 - D.27 FISSO / H 45	4645	27	21	58	58	4987	4564
BT 40 - D.27 FISSO / H 100	5590						
BT 40 - D.27 FISSO / H 130	9422			48			
BT 40 - D.27 FISSO / H 160	5591						
BT 40 - D.27 FISSO / H 200	8418						
BT 40 - D.32 FISSO / H 50	4646	32	24	78	78	4988	4565
BT 40 - D.32 FISSO / H 100	5592						
BT 40 - D.32 FISSO / H 160	8419			58			
BT 40 - D.40 FISSO / H 55	4647	40	27	88	88	4989	4566
BT 40 - D.40 FISSO / H 100	8420						
BT 40 - D.40 FISSO / H 160	8421			70			
BT 50 - D.16 FISSO / H 60	4648	16	17	38	38	4985	4562
BT 50 - D.16 FISSO / H 100	5593						
BT 50 - D.16 FISSO / H 130	9425						
BT 50 - D.16 FISSO / H 160	8422						
BT 50 - D.16 FISSO / H 200	8423						
BT 50 - D.22 FISSO / H 60	4172	22	19	48	48	4986	4563
BT 50 - D.22 FISSO / H 100	5659						
BT 50 - D.22 FISSO / H 130	9426			46			
BT 50 - D.22 FISSO / H 160	5660			49			
BT 50 - D.22 FISSO / H 200	8424						
BT 50 - D.22 FISSO / H 250	8425						
BT 50 - D.22 FISSO / H 300	8426						
BT 50 - D.27 FISSO / H 60	4649	27	21	58	58	4987	4564
BT 50 - D.27 FISSO / H 100	5666						
BT 50 - D.27 FISSO / H 130	9427			55			
BT 50 - D.27 FISSO / H 160	5667			78			
BT 50 - D.27 FISSO / H 200	8427						
BT 50 - D.27 FISSO / H 250	8428						
BT 50 - D.27 FISSO / H 300	8429						
BT 50 - D.32 FISSO / H 60	4650			32			
BT 50 - D.32 FISSO / H 100	5669						
BT 50 - D.32 FISSO / H 130	9428	66					
BT 50 - D.32 FISSO / H 160	8430						
BT 50 - D.32 FISSO / H 200	8431						
BT 50 - D.32 FISSO / H 250	8432						
BT 50 - D.32 FISSO / H 300	8433						
BT 50 - D.40 FISSO / H 60	4651	40	27		88	88	4989
BT 50 - D.40 FISSO / H 100	5676						
BT 50 - D.40 FISSO / H 160	8434			70			
BT 50 - D.40 FISSO / H 200	8435			70			

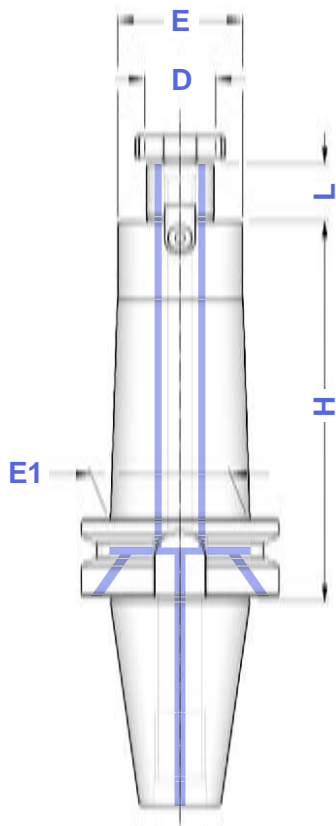
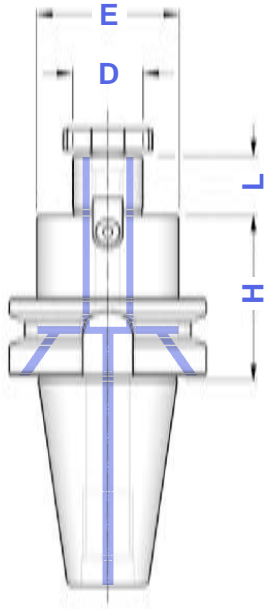
BT**PORTAFRESE FISSI CON PASSAGGIO REFRIGERANTE**

DIN 6357 FACE MILL HOLDERS WITH COOLANT THROUGH

FORMA B (AD+B)

Balanced G 6,3

8.000 rpm

**FORMA
B**

TIPO	Art.	D	L	E	E1		
BTB 40 - D. 16 FISSO/H 45	5881	16	17	38	38	4985	4562
BTB 40 - D. 16 FISSO/H 100	5882						
BTB 40 - D. 16 FISSO/H 130	9430						
BTB 40 - D. 16 FISSO/H 160	8438						
BTB 40 - D. 16 FISSO/H 200	8439						
BTB 40 - D. 22 FISSO/H 45	5883	22	19	48	48	4986	4563
BTB 40 - D. 22 FISSO/H 100	5884						
BTB 40 - D. 22 FISSO/H 130	9431			46			
BTB 40 - D. 22 FISSO/H 160	8440						
BTB 40 - D. 22 FISSO/H 200	8441						
BTB 40 - D. 27 FISSO/H 45	5885	27	21	58	58	4987	4564
BTB 40 - D. 27 FISSO/H 100	5886						
BTB 40 - D. 27 FISSO/H 130	9432			48	48		
BTB 40 - D. 27 FISSO/H 160	8442						
BTB 40 - D. 27 FISSO/H 200	8443						
BTB 40 - D. 32 FISSO/H 50	5887	32	24	78	78	4988	4565
BTB 40 - D. 32 FISSO/H 100	5888			58	58		
BTB 40 - D. 32 FISSO/H 160	8444						
BTB 40 - D. 40 FISSO/H 55	5889	40	27	88	88	4989	4566
BTB 40 - D. 40 FISSO/H 100	8445			70	70		
BTB 40 - D. 40 FISSO/H 160	8446						
BTB 50 - D. 16 FISSO/H 60	5890	16	17	38	38	4985	4562
BTB 50 - D. 16 FISSO/H 100	5891						
BTB 50 - D. 16 FISSO/H 130	9435						
BTB 50 - D. 16 FISSO/H 160	8447						
BTB 50 - D. 16 FISSO/H 200	8448						
BTB 50 - D. 22 FISSO/H 60	5892	22	19	48	48	4986	4563
BTB 50 - D. 22 FISSO/H 100	5893						
BTB 50 - D. 22 FISSO/H 130	9436			46	49		
BTB 50 - D. 22 FISSO/H 160	8449						
BTB 50 - D. 22 FISSO/H 200	8450						
BTB 50 - D. 22 FISSO/H 250	8451						
BTB 50 - D. 22 FISSO/H 300	8452						
BTB 50 - D. 27 FISSO/H 60	5894	27	21	58	58	4987	4564
BTB 50 - D. 27 FISSO/H 100	5895						
BTB 50 - D. 27 FISSO/H 130	9437			55	78		
BTB 50 - D. 27 FISSO/H 160	8453						
BTB 50 - D. 27 FISSO/H 200	8454						
BTB 50 - D. 27 FISSO/H 250	8455						
BTB 50 - D. 27 FISSO/H 300	8456						
BTB 50 - D. 32 FISSO/H 60	5896	32	24	78	78	4988	4565
BTB 50 - D. 32 FISSO/H 100	5897						
BTB 50 - D. 32 FISSO/H 130	9438			66			
BTB 50 - D. 32 FISSO/H 160	8457						
BTB 50 - D. 32 FISSO/H 200	8458						
BTB 50 - D. 32 FISSO/H 250	8459						
BTB 50 - D. 32 FISSO/H 300	8460						
BTB 50 - D. 40 FISSO/H 60	5898	40	27	88	88	4989	4566
BTB 50 - D. 40 FISSO/H 100	5899						
BTB 50 - D. 40 FISSO/H 160	8461			70	70		
BTB 50 - D. 40 FISSO/H 200	8462						

BT

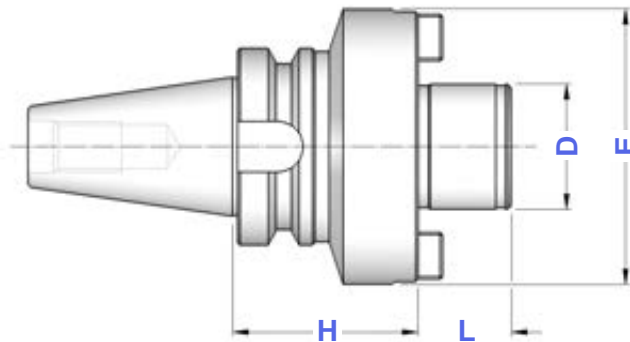
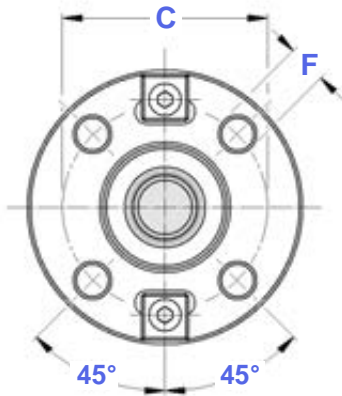
ATTACCHI PER FRESE AD INSERTI
FACE MILL HOLDERS FOR FACE MILLING CUTTERS

FORMA A

Balanced G 6,3
8.000 rpm




FORMA A

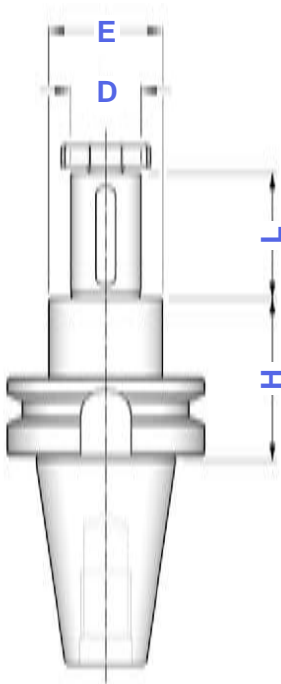
TIPO	Art.	D	H	L	E	C	F
BT 40 - D. 40 FM	4186	40	60	30	89	66,7	M12
BT 50 - D. 40 FM	4187	40	70	30	89	66,7	M12
BT 50 - D. 60 FM	4188	60	80	40	129	101,6	M16

**BT**

PORTAFRESE CON CHIAVETTA DI TRASCINAMENTO
MILL HOLDERS WITH FEATHER KEY

FORMA A**FORMA A**

TIPO	Art.	D	H	L	E			
BT 40 - D. 16 CHT	8503	16	52	30	28	0147	4985	4562
BT 40 - D. 22 CHT	8504	22	52	40	36	0148	4986	4563
BT 40 - D. 27 CHT	8505	27	52	60	43	0149	4987	4564
BT 40 - D. 32 CHT	8506	32	52	60	48	0150	4988	4565
BT 40 - D. 40 CHT	8507	40	52	60	56	0151	4989	4566



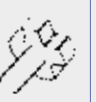



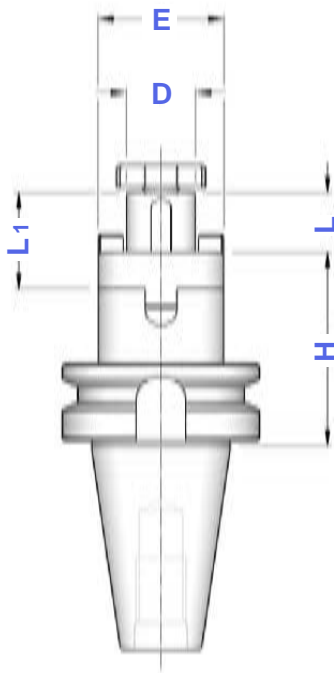
BT**PORTAFRESE COMBINATI**
DIN 6358 SHELL END MILL HOLDERS**FORMA A**

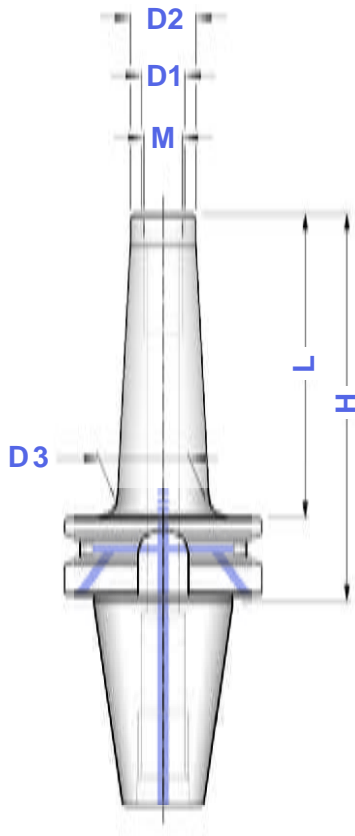
Balanced G 6,3

8.000 rpm

**FORMA
A**

TIPO	Art.	D	L1	L	E				
BT 30 - D. 16 C/H 50	3797	16	27	17	32	4090	0115	4985	4562
BT 30 - D. 22 C/H 50	3798	22	31	19	40	4091	0116	4986	4563
BT 30 - D. 27 C/H 55	3943	27	33	21	48	4092	0122	4987	4564
BT 40 - D. 16 C/H 55 BT 40 - D. 16 C/H 100 BT 40 - D. 16 C/H 150	3802 4113 8483	16	27	17	32	4090	0115	4985	4562
BT 40 - D. 22 C/H 55 BT 40 - D. 22 C/H 100 BT 40 - D. 22 C/H 150	3803 4114 8484	22	31	19	40	4091	0116	4986	4563
BT 40 - D. 27 C/H 55 BT 40 - D. 27 C/H 100 BT 40 - D. 27 C/H 150	3804 4115 8485	27	33	21	48	4092	0122	4987	4564
BT 40 - D. 32 C/H 60 BT 40 - D. 32 C/H 100 BT 40 - D. 32 C/H 150	3805 4116 8486	32	38	24	58	4093	0125	4988	4565
BT 40 - D. 40 C/H 60 BT 40 - D. 40 C/H 100	3806 3810	40	41	27	70	4094	0133	4989	4566
BT 50 - D. 16 C/H 70 BT 50 - D. 16 C/H 100	3812 4117	16	27	17	32	4090	0115	4985	4562
BT 50 - D. 22 C/H 70 BT 50 - D. 22 C/H 100	3813 4118	22	31	19	40	4091	0116	4986	4563
BT 50 - D. 27 C/H 70 BT 50 - D. 27 C/H 100	3814 4119	27	33	21	48	4092	0122	4987	4564
BT 50 - D. 32 C/H 70 BT 50 - D. 32 C/H 100	3815 4120	32	38	24	58	4093	0125	4988	4565
BT 50 - D. 40 C/H 70 BT 50 - D. 40 C/H 100	3816 4121	40	41	27	70	4094	0133	4989	4566



BT
MANDRINI PER FRESE CON ATTACCO FILETTATO
CHUCKS FOR MILLING CUTTERS WITH THREADED SHANK
FORMA B (AD+B)
 Balanced G 6,3
 12.000 rpm
FORMA B

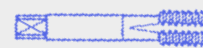
TIPO	Art.	M	D1	D2	D3	H	L
BT 40 - M 6 / H 55	7687	M 6	6,5	10	13	55	28
BT 40 - M 6 / H 77	7688				20	77	50
BT 40 - M 6 / H 102	7689				23	102	75
BT 40 - M 8 / H 55	7827	M 8	8,5	13	15	55	28
BT 40 - M 8 / H 77	7828				23	77	50
BT 40 - M 8 / H 102	7829				23	102	75
BT 40 - M 8 / H 127	7830				25	127	100
BT 40 - M 10 / H 55	7831	M 10	10,5	18	20	55	28
BT 40 - M 10 / H 77	7832				23	77	50
BT 40 - M 10 / H 102	7833				28	102	75
BT 40 - M 10 / H 127	7834				32	127	100
BT 40 - M 12 / H 55	7835	M 12	12,5	21	24	55	28
BT 40 - M 12 / H 77	7836				24	77	50
BT 40 - M 12 / H 102	7837				31	102	75
BT 40 - M 12 / H 127	7838				33	127	100
BT 40 - M 16 / H 55	7839	M 16	17,0	29	32	55	28
BT 40 - M 16 / H 77	7840				34	77	50
BT 40 - M 16 / H 102	7841				34	102	75
BT 40 - M 16 / H 127	7842				36	127	100
BT 40 - M 16 / H 152	7843				40	152	125
BT 50 - M 12 / H 88	7844	M 12	12,5	21	24	88	50
BT 50 - M 12 / H 138	7845				33	138	100
BT 50 - M 12 / H 188	7846				40	188	150
BT 50 - M 12 / H 254	8719				42	254	216
BT 50 - M 16 / H 88	7847	M 16	17,0	29	34	88	50
BT 50 - M 16 / H 138	7848				36	138	100
BT 50 - M 16 / H 188	7849				42,5	188	150
BT 50 - M 16 / H 254	8720				44	254	216

BT

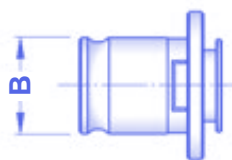
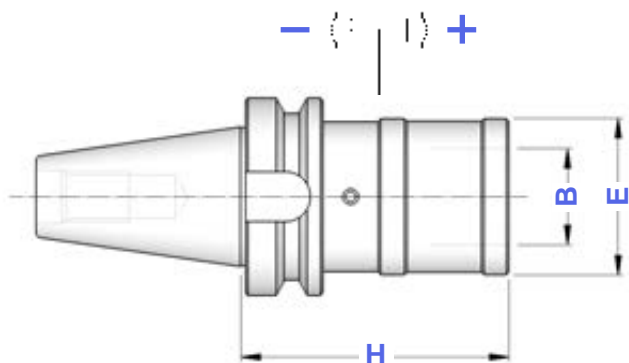
**MASCHIATORI A CAMBIO RAPIDO CON
DOPPIA COMPENSAZIONE**
DOUBLE COMPENSATION QUICK CHANGE TAP HOLDERS

FORMA A**FORMA
A**

TIPO	Art.	H	E	B	COMPENSAZIONE	
BT 30 - B. 1	2863	63	38	19	- 7,5 + 7,5	M 3 ÷ M 12 (*M16)
BT 30 - B. 2	2865	107	55	31	- 12,5 + 12,5	M 6 ÷ M 20 (*M30)
BT 40 - B. 1	3524	67	38	19	- 7,5 + 7,5	M 3 ÷ M 12 (*M16)
BT 40 - B. 2	3525	93	55	31	- 12,5 + 12,5	M 6 ÷ M 20 (*M30)
BT 40 - B. 3	3526	164	79	48	- 20,0 + 20,0	M14 ÷ M 33 (*M48)
BT 50 - B. 1	3028	80	38	19	- 7,5 + 7,5	M 3 ÷ M 12 (*M16)
BT 50 - B. 2	3530	102	55	31	- 12,5 + 12,5	M 6 ÷ M 20 (*M30)
BT 50 - B. 3	3531	133	79	48	- 20,0 + 20,0	M14 ÷ M 33 (*M48)



* Bussole con grani
Adapters with screws

**BT**

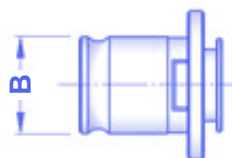
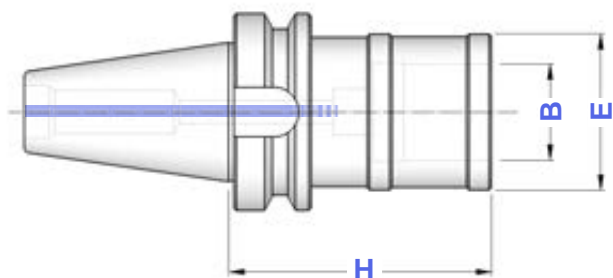
**MASCHIATORI A CAMBIO RAPIDO
SENZA COMPENSAZIONE**
QUICK CHANGE TAP HOLDERS WITHOUT COMPENSATION

FORMA A (AD)**FORMA
A**

TIPO	Art.	H	E	B	
BT 40 - B. 1 FISSO	4951	67	33	19	M 3 ÷ M 12 (*M16)
BT 40 - B. 2 FISSO	4952	90	50	31	M 6 ÷ M 20 (*M30)
BT 40 - B. 3 FISSO	5711	117	72	48	M14 ÷ M 33 (*M48)
BT 50 - B. 1 FISSO	2999	78	33	19	M 3 ÷ M 12 (*M16)
BT 50 - B. 2 FISSO	4953	101	50	31	M 6 ÷ M 20 (*M30)
BT 50 - B. 3 FISSO	5712	125	72	48	M14 ÷ M 33 (*M48)



* Bussole con grani
Adapters with screws



I maschiatori sono fornibili anche con la sola compensazione a trazione (SFILAMENTO)
Tap holders are also available with traction compensation only (TENSION ONLY)