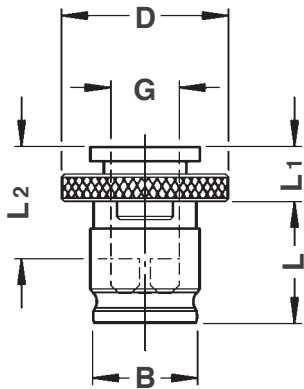
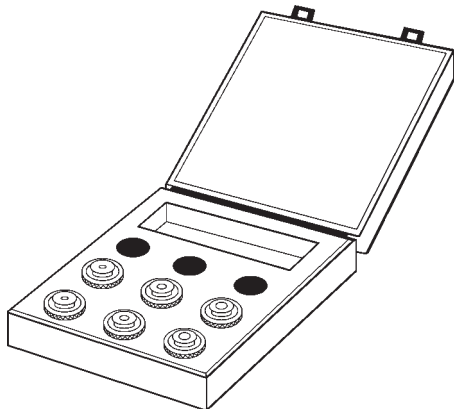

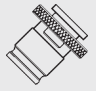


BUSSOLE**BUSSOLE A CAMBIO RAPIDO SENZA FRIZIONE**
*QUICK CHANGE TAP ADAPTERS WITHOUT CLUTCH***SENZA
FRIZIONE**

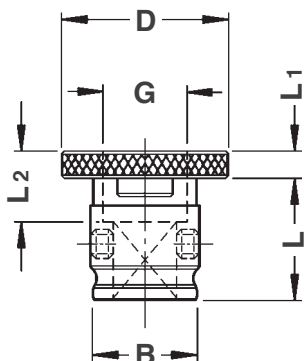
TIPO	Art.	FILETTO	G	B	D	L	L1	L2
B.0	4077	M 2 ÷ M 10	∅ 2,5 ÷ ∅ 8	13	22	19,5	7	15
B.1	3390	M 2 ÷ M 12	∅ 2,5 ÷ ∅ 11	19	30	21,5	7	17
B.2	3391	M 5 ÷ M 20	∅ 6,0 ÷ ∅ 18	31	46	35,0	11	30
B.3	3392	M14 ÷ M 33	∅11,0 ÷ ∅ 28	48	68	55,5	14	44

KIT**CASSETTE DI CORREDO CON BUSSOLE
SENZA FRIZIONE***EQUIPMENT BOXES FOR TAP HOLDERS
WITH TAP ADAPTERS WITHOUT CLUTCH*

TIPO	Art.		
Corredo B.1	7532	3695	6 Bussole Art. 3390: ∅ 3,5 (M 3) - ∅ 4,5 (M 4) ∅ 6 (M 6) - ∅ 8 (M 8) ∅ 9 (M12) - ∅ 10 (M10)
Corredo B.2	7533	3695	7 Bussole Art. 3391: ∅ 8 (M 8) - ∅ 9 (M12) ∅ 10 (M10) - ∅ 11 (M14) ∅ 12 (M16) - ∅ 14 (M18) ∅ 16 (M20)

A richiesta è possibile completare il corredo aggiungendo il Maschiatore di Vostro interesse.

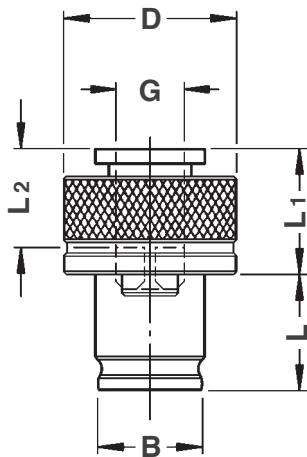
On request is possible to complete the equipment adding the Tap Holder you are interested on.

**BUSSOLE
GR****BUSSOLE SENZA FRIZIONE CON GRANI**
*TAP ADAPTERS WITH SCREWS - WITHOUT CLUTCH***SENZA
FRIZIONE**

TIPO	Art.	FILETTO	G	B	D	L	L1	L2
B.1 - GR	3390 GR	M 16	∅ 12	19	30	21,5	6,0	14,0
B.2 - GR	3391 GR	M 27 ÷ M 30	∅ 20 ÷ ∅ 22	31	46	35,0	8,5	22,5
B.3 - GR	3392 GR	M 39 ÷ M 48	∅ 32 ÷ ∅ 36	48	68	55,5	9,0	37,0

Nelle bussole tipo GR il fissaggio del maschio non avviene mediante sfere ma grazie a 2 grani situati sul diametro di guida. Questo sistema permette di poter utilizzare maschi con gambo di diametro maggiore rispetto alle normali bussole.

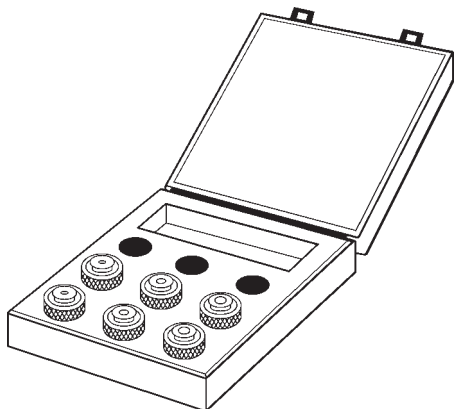
On GR tap adapters, the tap is locked by 2 screws on guide diameter and not by balls. This method allows utilization of larger shanks in comparison with the normal tap adapters.

BUSSOLE**BUSSOLE A CAMBIO RAPIDO CON FRIZIONE**
QUICK CHANGE TAP ADAPTERS WITH CLUTCH**CON FRIZIONE**

TIPO	Art.	FILETTO	G	B	D	L	L1	L2
BF.0	4078	M 2 ÷ M 10	∅ 2,5 ÷ ∅ 8	13	23	19,5	21	15
BF.1	3387	M 2 ÷ M 12	∅ 2,8 ÷ ∅ 11	19	32	21,5	25	17
BF.2	3388	M 5 ÷ M 20	∅ 6,0 ÷ ∅ 18	31	50	35,0	34	30
BF.3	3389	M14 ÷ M 33	∅ 11,0 ÷ ∅ 28	48	72	55,5	45	44

KIT**CASSETTE DI CORREDO CON BUSSOLE CON FRIZIONE**

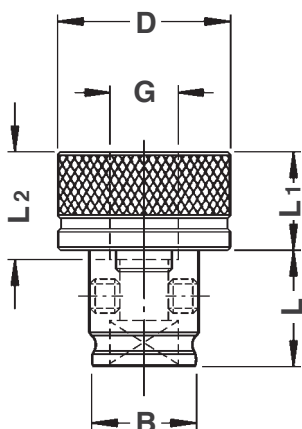
EQUIPMENT BOXES FOR TAP HOLDERS WITH TAP ADAPTERS WITH CLUTCH



TIPO	Art.		
Corredo BF.1	7534	3695	6 Bussole Art. 3387: ∅ 3,5 (M 3) - ∅ 4,5 (M 4) ∅ 6 (M 6) - ∅ 8 (M 8) ∅ 9 (M12) - ∅ 10 (M10)
Corredo BF.2	7535	3695	7 Bussole Art. 3388: ∅ 8 (M 8) - ∅ 9 (M 12) ∅ 10 (M10) - ∅ 11 (M 14) ∅ 12 (M 16) - ∅ 14 (M 18) ∅ 16 (M 20)

A richiesta è possibile completare il corredo aggiungendo il Maschiatore di Vostro interesse.

On request is possible to complete the equipment adding the Tap Holder you are interested on.

BUSSOLE GR**BUSSOLE CON FRIZIONE CON GRANI**
TAP ADAPTERS WITH SCREWS - WITH CLUTCH**CON FRIZIONE**

TIPO	Art.	FILETTO	G	B	D	L	L1	L2
BF.1 - GR	3387 GR	M 16	∅ 12	19	32	21,5	23	25,5
BF.2 - GR	3388 GR	M 27 ÷ M 30	∅ 20 ÷ ∅ 22	31	50	35,0	29	31,0
BF.3 - GR	3389 GR	M 39 ÷ M 48	∅ 32 ÷ ∅ 36	48	72	55,5	39	39,0

Nelle bussole tipo GR il fissaggio del maschio non avviene mediante sfere ma grazie a 2 grani situati sul diametro di guida. Questo sistema permette di poter utilizzare maschi con gambo di diametro maggiore rispetto alle normali bussole.

On GR tap adapters, the tap is locked by 2 screws on guide diameter and not by balls. This method allows utilization of larger shanks in comparison with the normal tap adapters.

DIMENSIONAMENTO GAMBI PER MASCHI
SHANK TAPS SIZE

GAMBO	NORMALE DIN 352	RINFORZATO DIN 371	NORMALE DIN 376	NORMALE ISO	RINFORZATO ISO	TIPO BUSSOLA
2,50 x 2,10	M 1,0	M 1,0	M 3,5			0 - 1
	M 1,4	M 1,4				0 - 1
	M 1,6	M 1,6				0 - 1
	M 1,8	M 1,8				0 - 1
2,80 x 2,10	M 2,0	M 2,0	M 4,0			0 - 1
	M 2,2	M 2,2				0 - 1
	M 2,5	M 2,5				0 - 1
3,15 x 2,50				M 4,0	M 3,0	0 - 1
3,50 x 2,70	M 3,0	M 3,0	M 5,0			0 - 1
3,55 x 2,80				M 4,5	M 3,5	0 - 1
4,00 x 3,15	M 3,5	M 3,5		M 5,0	M 4,0	0 - 1
4,50 x 3,40	M 4,0	M 4,0	M 6,0			0 - 1
5,00 x 4,00					M 5,0	0 - 1
6,00 x 4,90	M 5,0	M 5,0				0 - 1 - 2
	M 6,0	M 6,0				0 - 1 - 2
	M 8,0		M 8,0			0 - 1 - 2
6,30 x 5,00				M 8,0	M 6,0	0 - 1 - 2
7,00 x 5,50	M 10,0		M 10,0			0 - 1 - 2
8,00 x 6,30		M 8,0		M 10,0	M 8,0	0 - 1 - 2
9,00 x 7,10	M 12,0		M 12,0	M 12,0		1 - 2
10,00 x 8,00		M 10,0			M 10,0	1 - 2
11,00 x 9,00	M 14,0		M 14,0			1 - 2 - 3
11,20 x 9,00				M 14,0		1 - 2 - 3
12,00 x 9,00	M 16,0		M 16,0			1 - 2 - 3
12,50 x 10,00				M 16,0		2 - 3
14,00 x 11,00	M 18,0		M 18,0			2 - 3
14,00 x 11,20				M 18,0		2 - 3
				M 20,0		2 - 3
16,00 x 12,00	M 20,0		M 20,0			2 - 3
16,00 x 12,50				M 22,0		2 - 3
18,00 x 14,00				M 24,0		2 - 3
18,00 x 14,50	M 22,0		M 22,0			2 - 3
	M 24,0		M 24,0			2 - 3
20,00 x 16,00	M 27,0		M 27,0	M 27,0		2 - 3
				M 30,0		2 - 3
22,00 x 18,00	M 30,0		M 30,0			2 - 3
25,00 x 20,00	M 33,0		M 33,0	M 36,0		3
28,00 x 22,00	M 36,0		M 36,0			3
32,00 x 24,00	M 39,0		M 39,0			3
	M 42,0		M 42,0			3
36,00 x 29,00	M 45,0		M 45,0			3
	M 48,0		M 48,0			3