

Equipements de machines



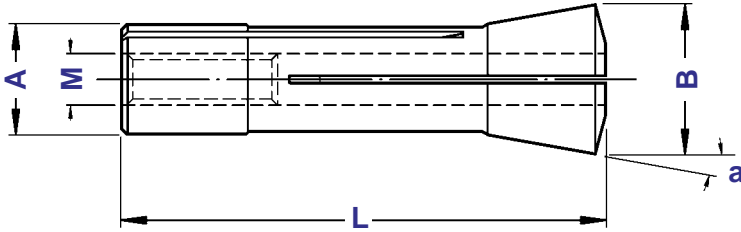
Bridgeport R8

BRIDGEPORT R8

PINZA BRIDGEPORT R8 BRIDGEPORT R8 COLLET

PINZE

TIPO	Art.	CAPACITA'	A	B	L	a	M	Einheits
PINZA R8	0716	2,0 ÷ 20 1/16" ÷ 7/8"	24,12	32	106	8° 35'	7/16 - 20"	369E

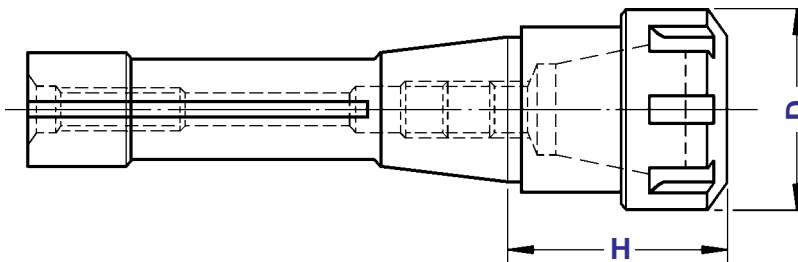


BRIDGEPORT R8

PORTAPINZE ER - GHIERA STANDARD ER COLLET CHUCK WITH STANDARD NUT

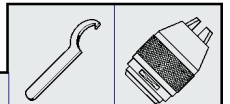


TIPO	Art.	H	D	CAPACITA'			
PORTAPINZA R8 - ER 32	2973	40	50	2 ÷ 20	1962	3670	0988
PORTAPINZA R8 - ER 40	2974	73	63	3 ÷ 30	1963	3671	0821

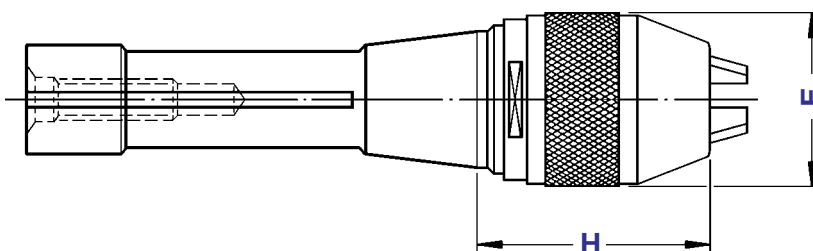


BRIDGEPORT R8

MANDRINI AUTOSERRANTI INTEGRALI MONOLITHIC DRILL CHUCKS



TIPO	Art.	CAPACITA'	E		
R8 - DC 13/H 82	3000	1 ÷ 13	50	2934	2814
R8 - DC 16/H 87	3002	3 ÷ 16	58	2935	2815

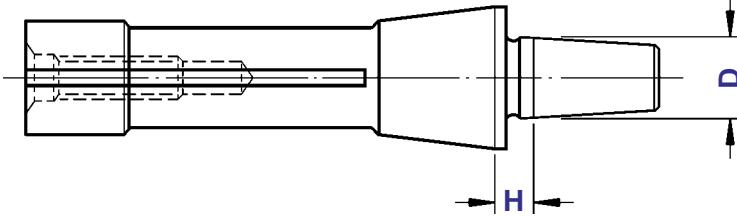


BRIDGEPORT R8

ATTACCHI PER MANDRINI PORTAPUNTA-DIN 238 SHANKS FOR DRILL CHUCKS DIN 238 TYPE

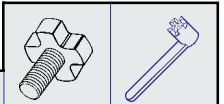
DIN
238

TIPO	Art.	D	DIN 238
R 8 - B 12/H 10	1088	12,065	B 12
R 8 - B 16/H 10	1089	15,733	B 16
R 8 - B 18/H 10	1090	17,780	B 18
R 8 - J 33/H 10	1097	15,850	J 33
R 8 - J 6 /H 10	1098	17,170	J 6

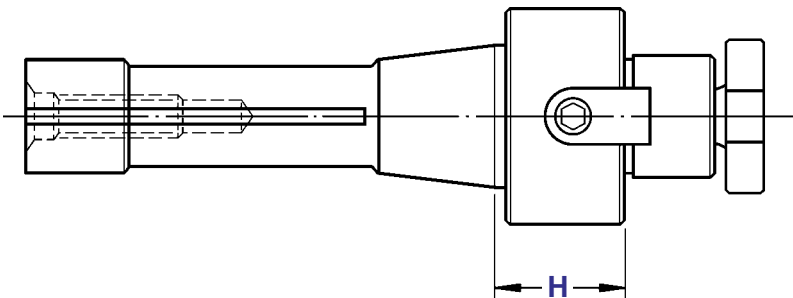


BRIDGEPORT R8

PORTAFRESE BRIDGEPORT R8 MILL HOLDERS BRIDGEPORT R8 TYPE



TIPO	Art.	H		
PORTAFRESA R8 - D. 16	2978	19	4985	4562
PORTAFRESA R8 - D. 22	2979	23	4986	4563
PORTAFRESA R8 - D. 27	2980	23	4987	4564
PORTAFRESA R8 - D. 32	2981	24	4988	4565



BRIDGEPORT R8

RIDUZIONE BRIDGEPORT R8 A CONO MORSE BRIDGEPORT R8 ADAPTORS TO CONO MORSE

RIDUZIONI

TIPO	Art.	Lt
RIDUZIONE R8 - CM 1 PUNTE	2975	124
RIDUZIONE R8 - CM 2 PUNTE	2976	137
RIDUZIONE R8 - CM 3 PUNTE	2977	150

