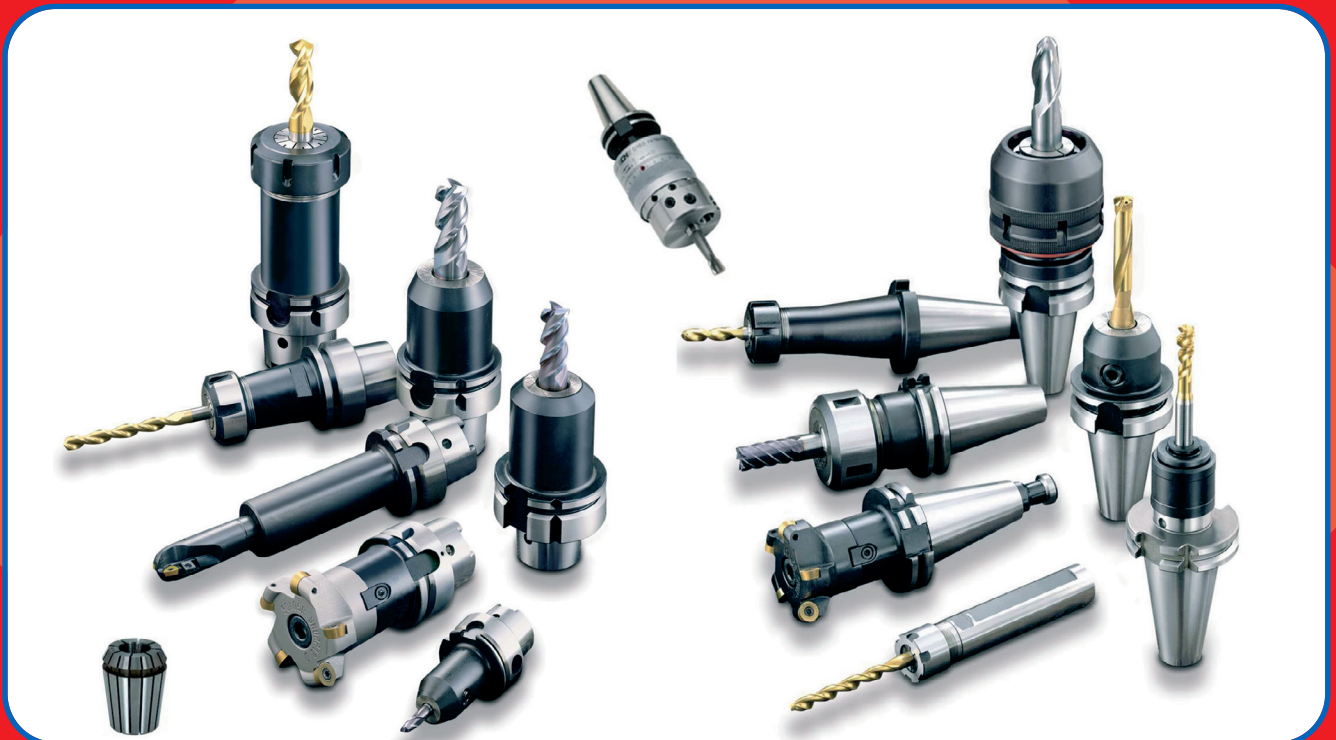


# ACCESSOIRES MACHINES OUTILS



**DIN 238**

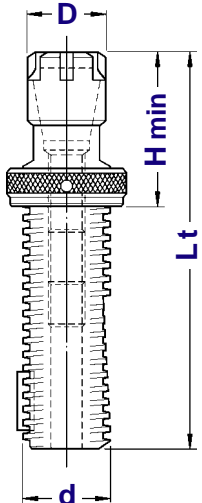
# DIN 6327

## PORTAPINZE ER CON GHIERA MINI

ER COLLET CHUCK WITH SMALL NUT



TIPO	Art.	HMIN	D	CAPACITA'					
TR 8 - ER 8 M/Lt 75	3146	35	12	1 ÷ 5	-----	2964	0373	5717	0554
TR10 - ER11 M/Lt 95	3147	45	16	1 ÷ 7	-----	2965	0432	5718	5573
TR12 - ER11 M/Lt 95	3148	45	16	1 ÷ 7	0181	2966	0432	5718	5573
TR12 - ER16 M/Lt 103	3149	53	22	1 ÷ 10	0181	2966	0334	5719	0364
TR16 - ER16 M/Lt 120	3150	46	22	1 ÷ 10	0181	2967	0334	5719	0364
TR16 - ER20 M/Lt 130	3151	57	28	1 ÷ 13	0181	2967	2829	5720	0787
TR20 - ER16 M/Lt 135	3153	62	22	1 ÷ 10	0186	2968	0334	5719	0364
TR20 - ER20 M/Lt 135	3154	62	28	1 ÷ 13	0186	2968	2829	5720	0787
TR20 - ER25 M/Lt 135	3155	62	35	1 ÷ 16	0186	2968	2822	5721	0996



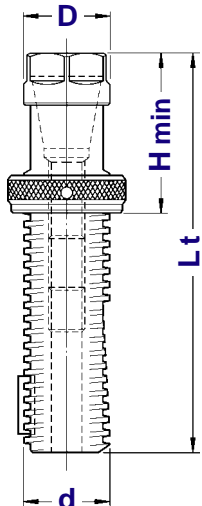
# DIN 6327

## PORTAPINZE ER CON GHIERA ESAGONALE

ER COLLET CHUCK WITH EXAGONAL NUT



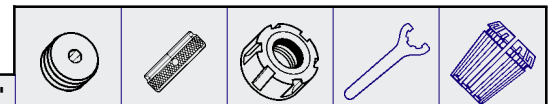
TIPO	Art.	HMIN	D	CAPACITA'					
TR 16 - ER11 E/Lt 110	3137	37	19	1 ÷ 7	0181	2967	1157	2905	5573
TR 16 - ER16 E/Lt 122	3138	46	28	1 ÷ 10	0181	2967	0324	2906	0364
TR 20 - ER16 E/Lt 128	3139	55	28	1 ÷ 10	0186	2968	0324	2906	0364
TR 20 - ER20 E/Lt 135	3140	62	34	1 ÷ 13	0186	2968	0325	2907	0787
TR 28 - ER16 E/Lt 140	3161	55	28	1 ÷ 10	0186	2969	0324	2906	0364
TR 28 - ER20 E/Lt 140	3141	61	34	1 ÷ 13	0186	2969	0325	2907	0787



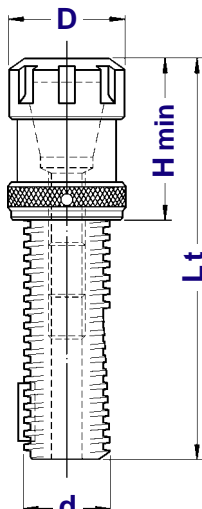
# DIN 6327

## PORTAPINZE ER CON GHIERA STANDARD

ER COLLET CHUCK WITH STANDARD NUT



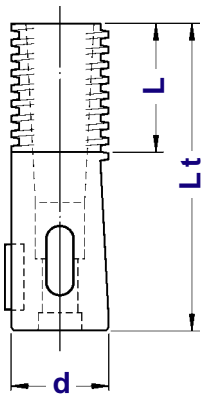
TIPO	Art.	HMIN	D	CAPACITA'					
TR 28 - ER 25 /Lt 140	3142	61	42	1 ÷ 16	0188	2969	0326	3669	0996
TR 28 - ER 32 /Lt 147	3143	68	50	2 ÷ 20	0188	2969	1962	3670	0988
TR 36 - ER 25 /Lt 163	3973	61	42	1 ÷ 16	0190	2970	0326	3669	0996
TR 36 - ER 32 /Lt 165	3144	65	50	2 ÷ 20	0190	2970	1962	3670	0988
TR 36 - ER 40 /Lt 186	3145	86	63	3 ÷ 30	0190	2970	1963	3671	0821
TR 48 - ER 32 /Lt 200	3667	65	50	2 ÷ 20	0191	2971	1962	3670	0988
TR 48 - ER 40 /Lt 207	3159	85	63	3 ÷ 30	0195	2971	1963	3671	0821



# DIN 6327

## ASTUCCI REGISTRABILI A CONO MORSE

DIN 6327 ADJUSTABLE ADAPTERS

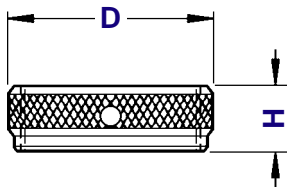


TIPO	Art.	d	L	
TR 16 - CM 1 / Lt 85	<b>2984</b>	TR. 16 x 1,5	40	2967
TR 20 - CM 1 / Lt 88	<b>2985</b>	TR. 20 x 2	40	2968
TR 28 - CM 1 / Lt 95	<b>2986</b>	TR. 28 x 2	42	2969
TR 28 - CM 2 / Lt 95	<b>3167</b>	TR. 28 x 2	42	2969
TR 36 - CM 1 / Lt 118	<b>3407</b>	TR. 36 x 2	50	2970
TR 36 - CM 2 / Lt 118	<b>3168</b>	TR. 36 x 2	50	2970
TR 36 - CM 3 / Lt 118	<b>3410</b>	TR. 36 x 2	50	2970
TR 48 - CM 2 / Lt 144	<b>3198</b>	TR. 48 x 2	65	2971
TR 48 - CM 3 / Lt 144	<b>3411</b>	TR. 48 x 2	65	2971
TR 48 - CM 4 / Lt 144	<b>3413</b>	TR. 48 x 2	65	2971

# DIN 6327

## GHIERE DI REGISTRAZIONE DIN 6327

DIN 6327 ADJUSTMENT NUTS

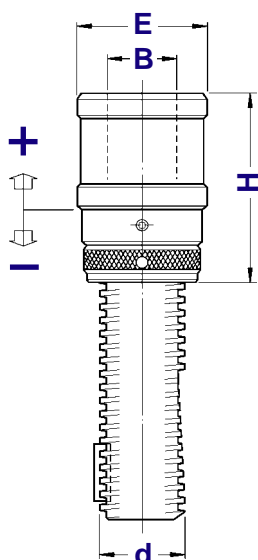
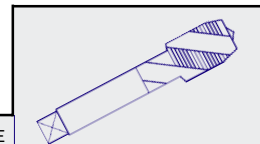


TIPO	Art.	H	D	
GH - TR 8 x 1	<b>2964</b>	10	14,0	0011
GH - TR10 x 1,5	<b>2965</b>	12	16,0	0017
GH - TR12 x 1,5	<b>2966</b>	12	20,0	0017
GH - TR16 x 1,5	<b>2967</b>	12	24,6	0019
GH - TR20 x 2	<b>2968</b>	12	31,6	0019
GH - TR28 x 2	<b>2969</b>	12	39,6	0020
GH - TR36 x 2	<b>2970</b>	14	49,6	0020
GH - TR48 x 2	<b>2971</b>	18	66,6	0021

# DIN 6327

## MASCHIATORI A CAMBIO RAPIDO DOPPIA COMPENSAZIONE

DOUBLE COMPENSATION QUICK CHANGE TAP HOLDERS



TIPO	Art.	d	H	E	B	COMPENSAZIONE	
TR 16 - B. 0	<b>3811</b>	TR. 16 x 1,5	50	26	13	- 6,5 + 6,5	M 1 ÷ M 10
TR 16 - B. 1	<b>3564</b>	TR. 16 x 1,5	52	36	19	- 7,5 + 7,5	M 3 ÷ M 12 (*M16)
TR 20 - B. 0	<b>3156</b>	TR. 20 x 2	50	26	13	- 6,5 + 6,5	M 1 ÷ M 10
TR 20 - B. 1	<b>3565</b>	TR. 20 x 2	52	36	19	- 7,5 + 7,5	M 3 ÷ M 12 (*M16)
TR 20 - B. 2	<b>3926</b>	TR. 20 x 2	76	53	31	-12,5 +12,5	M 6 ÷ M 20 (*M30)
TR 28 - B. 1	<b>3566</b>	TR. 28 x 2	52	36	19	- 7,5 + 7,5	M 3 ÷ M 12 (*M16)
TR 28 - B. 2	<b>3567</b>	TR. 28 x 2	76	53	31	-12,5 +12,5	M 6 ÷ M 20 (*M30)
TR 36 - B. 1	<b>3568</b>	TR. 36 x 2	54	36	19	- 7,5 + 7,5	M 3 ÷ M 12 (*M16)
TR 36 - B. 2	<b>3569</b>	TR. 36 x 2	78	53	31	-12,5 +12,5	M 6 ÷ M 20 (*M30)
TR 36 - B. 3	<b>3570</b>	TR. 36 x 2	110	79	48	-24,0 +24,0	M14 ÷ M 33 (*M48)
TR 48 - B. 3	<b>3571</b>	TR. 48 x 2	115	79	48	-24,0 +24,0	M14 ÷ M 33 (*M48)

\* Bussole con grani