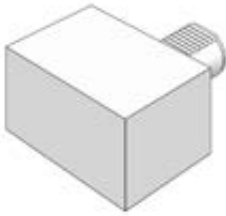


INDICE DELL' ATTACCO VDI - DIN 69880  
INDEX OF VDI - DIN 69880 SHANK

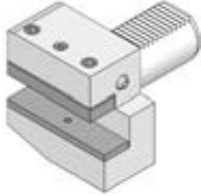
**A1**



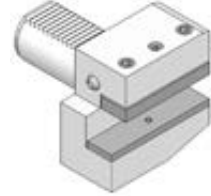
**A2**



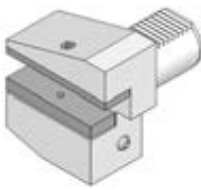
**B1**



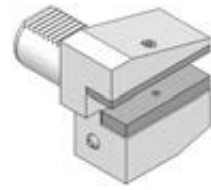
**B2**



**B3**



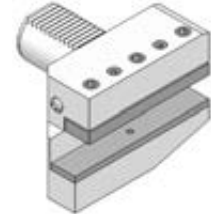
**B4**



**B5**



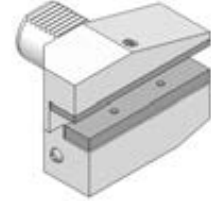
**B6**



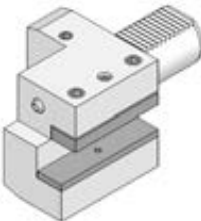
**B7**



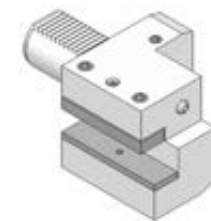
**B8**



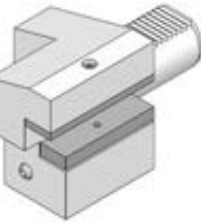
**C1**



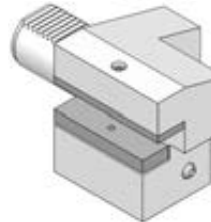
**C2**



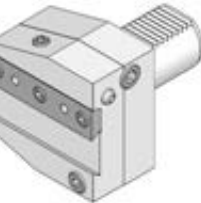
**C3**



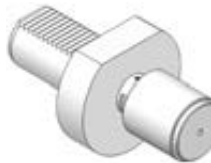
**C4**



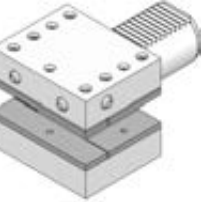
**CUT**



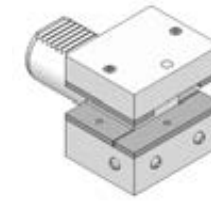
**BS**



**D1**



**D2**

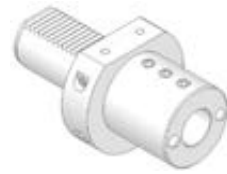


INDICE DELL' ATTACCO VDI - DIN 69880  
INDEX OF VDI - DIN 69880 SHANK

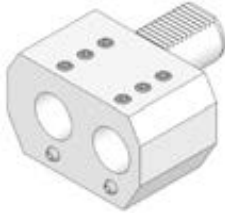
**E1**



**E2**



**ES7**



**ES8**



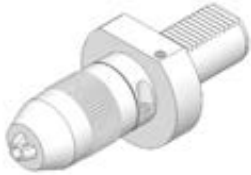
**E3**



**E4**



**DCU**



**RM**



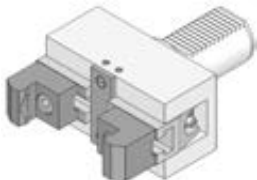
**G**



**F**



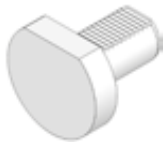
**H1**



**TA**



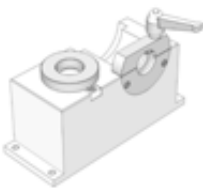
**Z2**



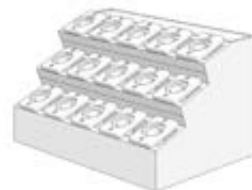
**M**



**SMD**



**MAG**

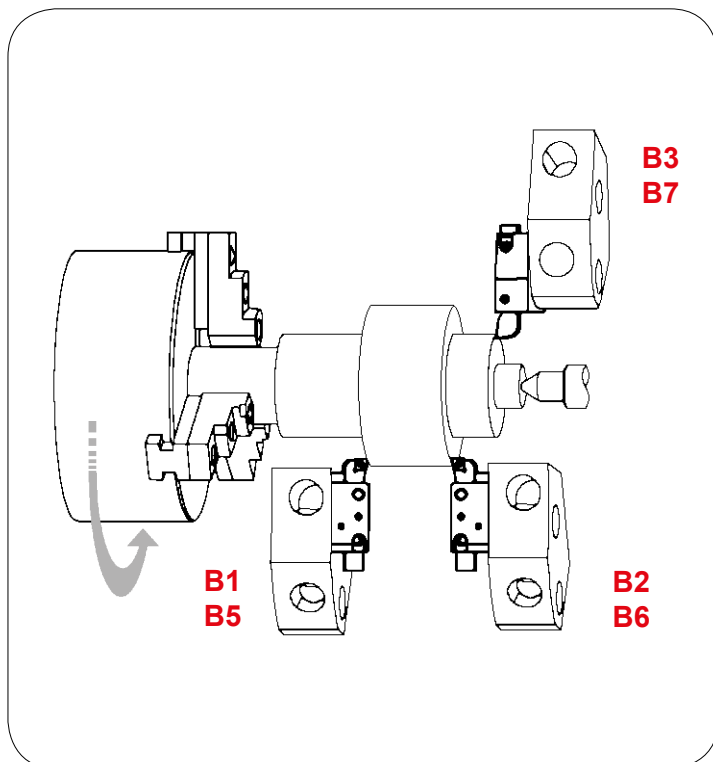
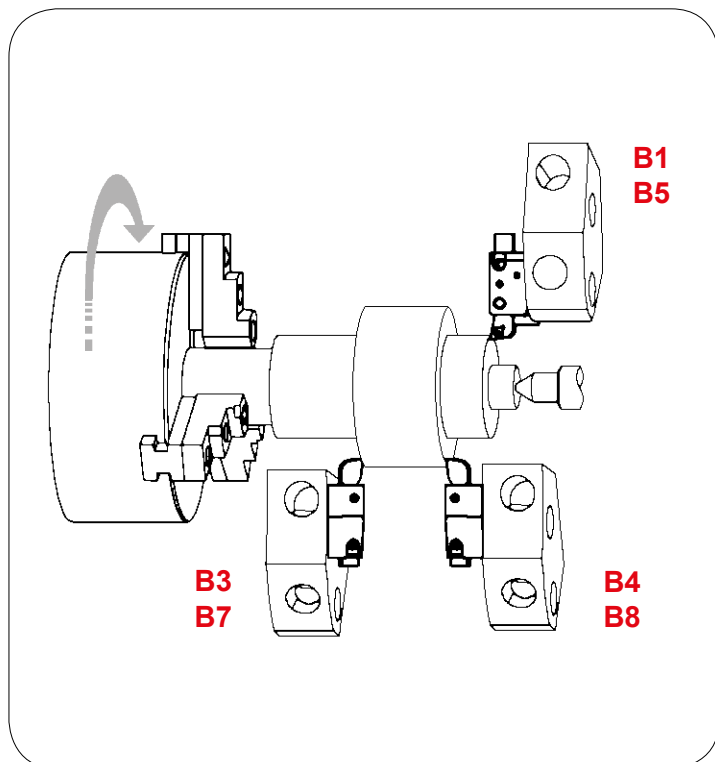


**PU**



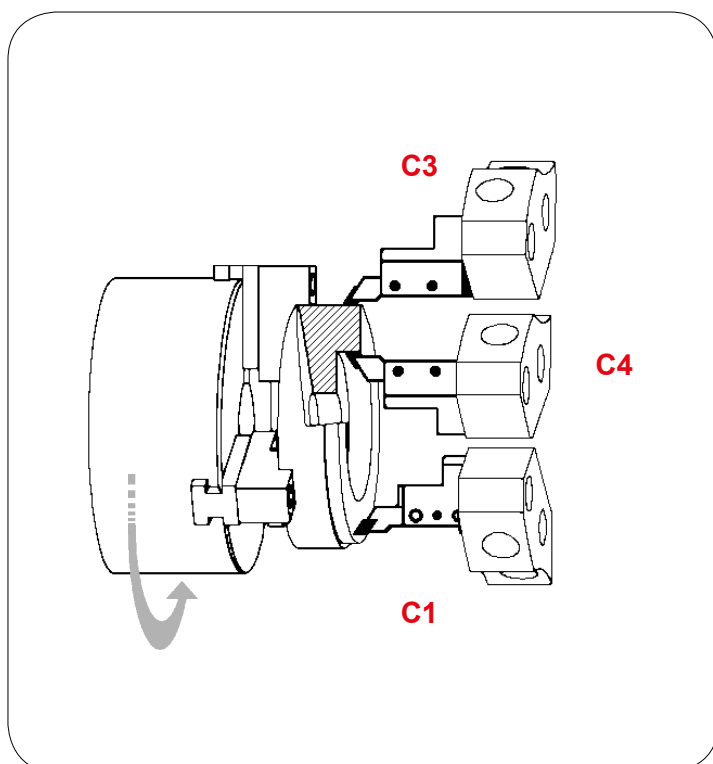
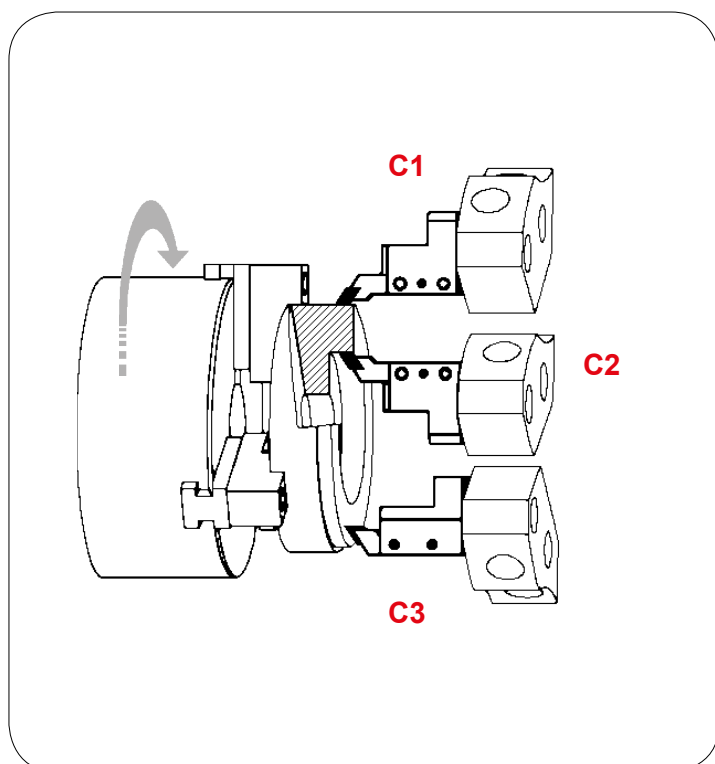
**IMPIEGO DEI PORTAUTENSILI RADIALI VDI - DIN 69880**

USE OF RADIAL TOOLHOLDERS VDI - DIN 69880



**IMPIEGO DEI PORTAUTENSILI ASSIALI VDI - DIN 69880**

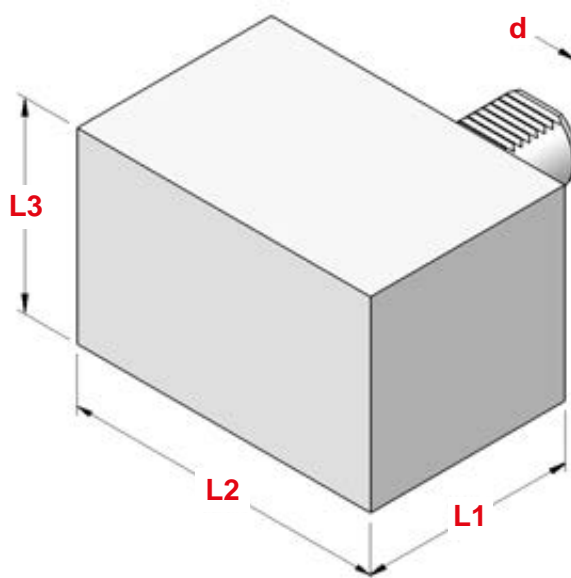
USE OF AXIAL TOOLHOLDERS VDI - DIN 69880



**VDI  
DIN 69880**

**PORTAUTENSILI LAVORABILI  
BLANK TOOLHOLDERS**

**A1**

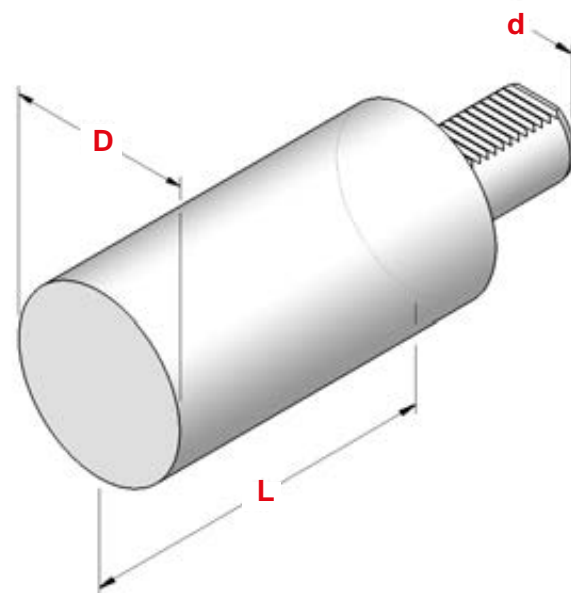


TIPO	Art.	d	L1	L2	L3
A1- 16x44	5600	16	44	78	44
A1- 20x65	5634	20	65	100	60
A1- 30x85	5616	30	85	130	76
A1- 40x100	5635	40	100	151	96
A1- 50x125	5636	50	125	160	120
A1- 60x160	9356	60	160	165	125

**VDI  
DIN 69880**

**PORTAUTENSILI LAVORABILI  
BLANK TOOLHOLDERS**

**A2**

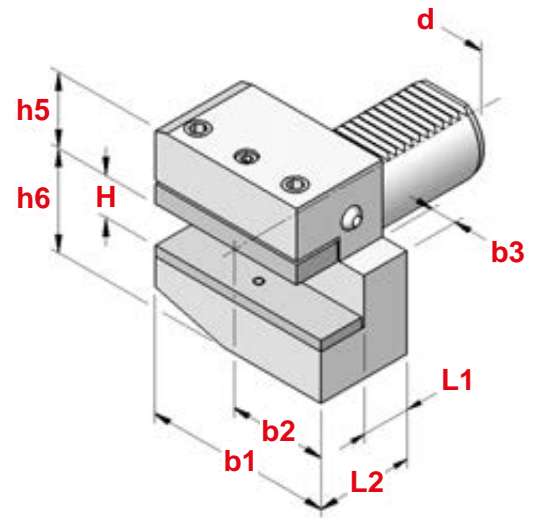


TIPO	Art.	d	D	L
A2- 16x60	5602	16	40	60
A2- 20x70	5637	20	50	70
A2- 30x100	5615	30	68	100
A2- 30x240	5638			240
A2- 40x120	5639	40	83	120
A2- 40x320	5640			320
A2- 50x135	5641	50	98	135
A2- 50x400	5642			400
A2- 60x150	9357	60	123	150
A2- 60x480	9358			480

**VDI  
DIN 69880**

**PORTAUTENSILI CON SEDE TRASVERSALE DESTRI CORTI**  
RADIAL TOOLHOLDERS - RIGHT HAND - SHORT TYPE

**B1**

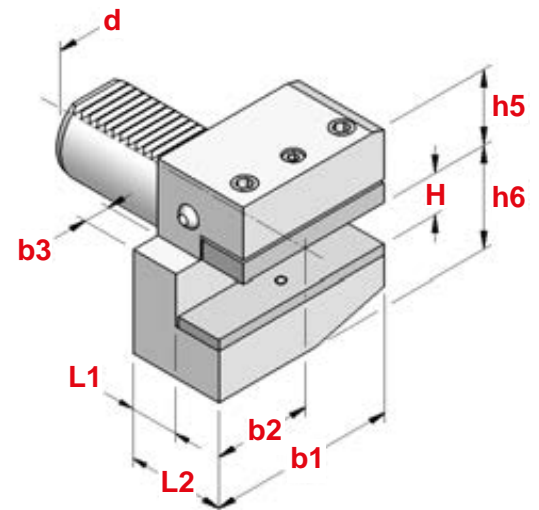


TIPO	Art.	d	b1	b2	b3	H	L1	L2
B1 - 16x12x24	5605	16	42	23,0	5,0	12	13	24
B1 - 16x12x34	5607						23	34
B1 - 20x16x30	5643	20	55	30,0	7,0	16/12	16	30
B1 - 20x16x40	5644						26	40
B1 - 30x20x40	5617	30	70	35,0	10,0	20/16	22	40
B1 - 30x20x60	5738						42	60
B1 - 40x25x44	5649	40	85	42,5	12,5	25/20	22	44
B1 - 50x32x55	5795	50	100	50,0	16,0	32/25	30	55
B1 - 60x32x60	9359	60	125	62,5	16,0	32/25	30	60

**VDI  
DIN 69880**

**PORTAUTENSILI CON SEDE TRASVERSALE SINISTRI CORTI**  
RADIAL TOOLHOLDERS - LEFT HAND - SHORT TYPE

**B2**

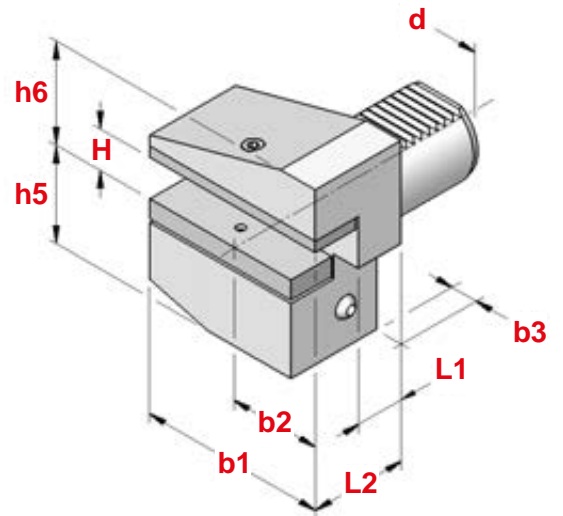


TIPO	Art.	d	b1	b2	b3	H	L1	L2
B2 - 16x12x24	9324	16	42	23,0	5,0	12	13	24
B2 - 16x12x34	9325						23	34
B2 - 20x16x30	5650	20	55	30,0	7,0	16/12	16	30
B2 - 20x16x40	5651						26	40
B2 - 30x20x40	5624	30	70	35,0	10,0	20/16	22	40
B2 - 30x20x60	5739						42	60
B2 - 40x25x44	5656	40	85	42,5	12,5	25/20	22	44
B2 - 50x32x55	5796	50	100	50,0	16,0	32/25	30	55
B2 - 60x32x60	9360	60	125	62,5	16,0	32/25	30	60

**VDI  
DIN 69880**

**PORTAUTENSILI CON SEDE TRASVERSALE ROVESCIA TI DESTRI CORTI**  
*RADIAL UPSIDE-DOWN TOOLHOLDERS - RIGHT HAND - SHORT TYPE*

**B3**

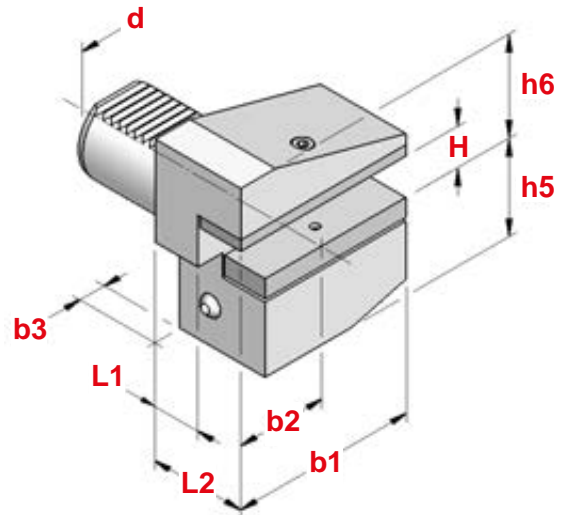


TIPO	Art.	d	b1	b2	b3	H	L1	L2
B3 - 16x12x24	5654	16	42	23,0	5,0	12	13	24
B3 - 16x12x34	5655						23	34
B3 - 20x16x30	5657	20	55	30,0	7,0	16/12	16	30
B3 - 20x16x40	5658						26	40
B3 - 30x20x40	5621	30	70	35,0	10,0	20/16	22	40
B3 - 30x20x60	5662						42	60
B3 - 40x25x44	5663	40	85	42,5	12,5	25/20	22	44
B3 - 50x32x55	5797	50	100	50,0	16,0	32/25	30	55
B3 - 60x32x60	9361	60	125	62,5	16,0	32/25	30	60

**VDI  
DIN 69880**

**PORTAUTENSILI CON SEDE TRASVERSALE ROVESCIA TI SINISTRI CORTI**  
*RADIAL UPSIDE-DOWN TOOLHOLDERS - LEFT HAND - SHORT TYPE*

**B4**

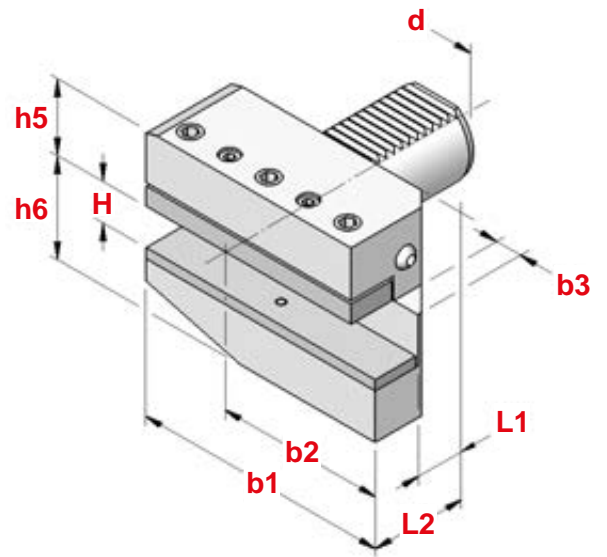


TIPO	Art.	d	b1	b2	b3	H	L1	L2
B4 - 16x12x24	9326	16	42	23,0	5,0	12	13	24
B4 - 16x12x34	9327						23	34
B4 - 20x16x30	5664	20	55	30,0	7,0	16/12	16	30
B4 - 20x16x40	5665						26	40
B4 - 30x20x40	5627	30	70	35,0	10,0	20/16	22	40
B4 - 30x20x60	5647						42	60
B4 - 40x25x44	5670	40	85	42,5	12,5	25/20	22	44
B4 - 50x32x55	5798	50	100	50,0	16,0	32/25	30	55
B4 - 60x32x60	9362	60	125	62,5	16,0	32/25	30	60

**VDI  
DIN 69880**

**PORTAUTENSILI CON SEDE TRASVERSALE DESTRI LUNGHI**  
RADIAL TOOLHOLDERS - RIGHT HAND - LONG TYPE

**B5**

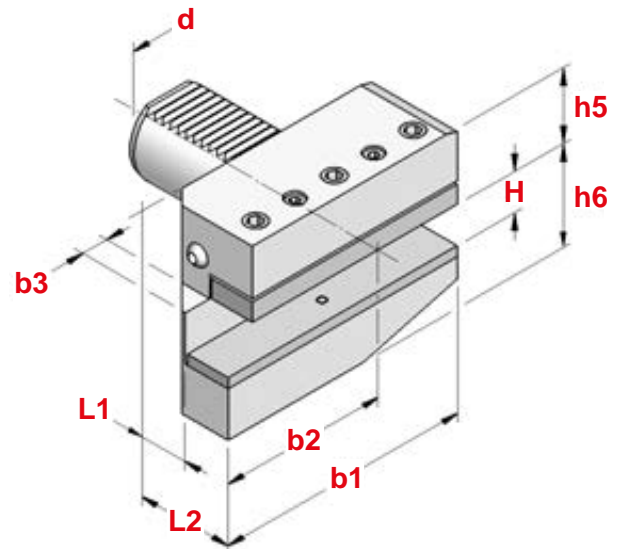


TIPO	Art.	d	b1	b2	b3	H	L1	L2
B5 - 16x12x24	9328	16	58	39,0	5,0	12	13	24
B5 - 16x12x34	9329						23	34
B5 - 20x16x30	5671	20	75	50,0	7,0	16/12	16	30
B5 - 20x16x40	5687						26	40
B5 - 30x20x40	5620	30	100	65,0	10,0	20/16	22	40
B5 - 30x20x60	5648						42	60
B5 - 40x25x44	5677	40	118	75,5	12,5	25/20	22	44
B5 - 50x32x55	5802	50	130	80,0	16,0	32/25	30	55
B5 - 60x32x60	9363	60	145	82,5	16,0	32/25	30	60

**VDI  
DIN 69880**

**PORTAUTENSILI CON SEDE TRASVERSALE SINISTRI LUNGHI**  
RADIAL TOOLHOLDERS - LEFT HAND - LONG TYPE

**B6**

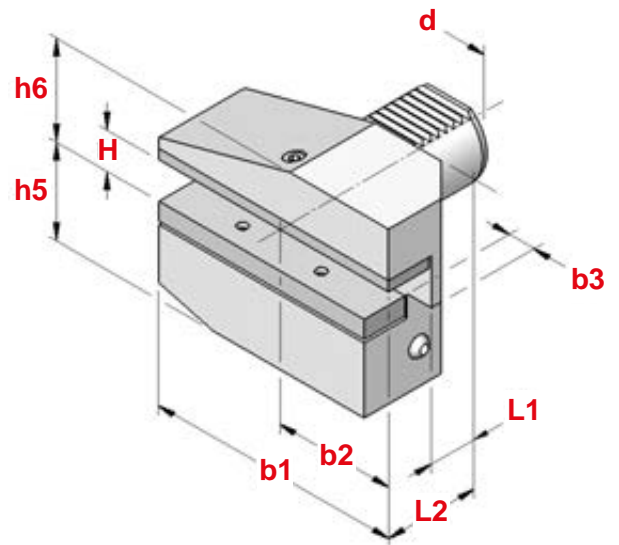


TIPO	Art.	d	b1	b2	b3	H	L1	L2
B6 - 16x12x24	9330	16	58	39,0	5,0	12	13	24
B6 - 16x12x34	9331						23	34
B6 - 20x16x30	5678	20	75	50,0	7,0	16/12	16	30
B6 - 20x16x40	5688						26	40
B6 - 30x20x40	5619	30	100	65,0	10,0	20/16	22	40
B6 - 30x20x60	5682						42	60
B6 - 40x25x44	5684	40	118	75,5	12,5	25/20	22	44
B6 - 50x32x55	5791	50	130	80,0	16,0	32/25	30	55
B6 - 60x32x60	9364	60	145	82,5	16,0	32/25	30	60

**VDI  
DIN 69880**

**PORTAUTENSILI CON SEDE TRASVERSALE ROVESCIA TI DESTRI LUNGHI**  
RADIAL UPSIDE-DOWN TOOLHOLDERS - RIGHT HAND - LONG TYPE

**B7**

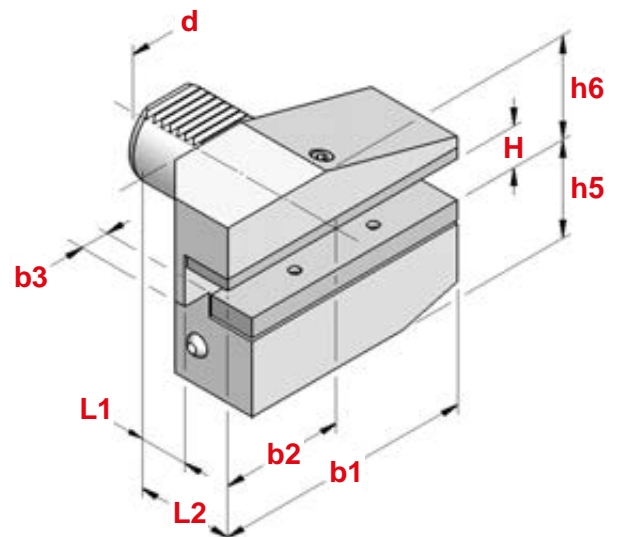


TIPO	Art.	d	b1	b2	b3	H	L1	L2
B7 - 16x12x24	9332	16	58	39,0	5,0	12	13	24
B7 - 16x12x34	9333						23	34
B7 - 20x16x30	5685	20	75	50,0	7,0	16/12	16	30
B7 - 20x16x40	5686						26	40
B7 - 30x20x40	5689	30	100	65,0	10,0	20/16	22	40
B7 - 30x20x60	5699						42	60
B7 - 40x25x44	5692	40	118	75,5	12,5	25/20	22	44
B7 - 50x32x55	5803	50	130	80,0	16,0	32/25	30	55
B7 - 60x32x60	9365	60	145	82,5	16,0	32/25	30	60

**VDI  
DIN 69880**

**PORTAUTENSILI CON SEDE TRASVERSALE ROVESCIA TI SINISTRI LUNGHI**  
RADIAL UPSIDE-DOWN TOOLHOLDERS - LEFT HAND - LONG TYPE

**B8**



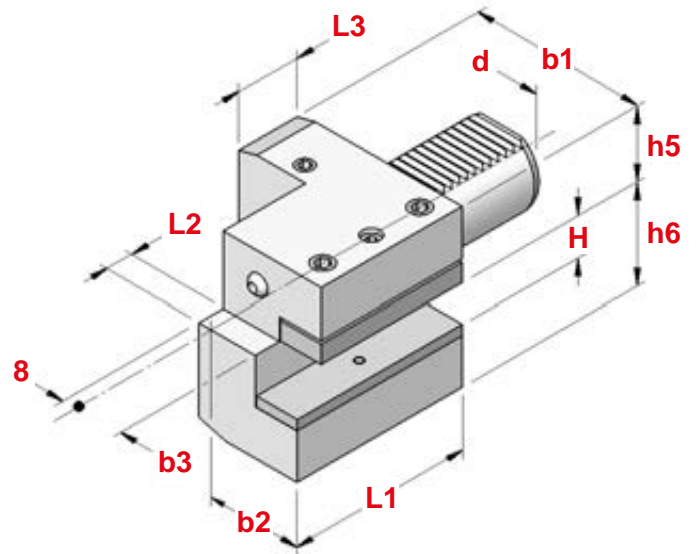
TIPO	Art.	d	b1	b2	b3	H	L1	L2
B8 - 16x12x24	9334	16	58	39,0	5,0	12	13	24
B8 - 16x12x34	9335						23	34
B8 - 20x16x30	5693	20	75	50,0	7,0	16/12	16	30
B8 - 20x16x40	5745						26	40
B8 - 30x20x40	5697	30	100	65,0	10,0	20/16	22	40
B8 - 30x20x60	5698						42	60
B8 - 40x25x44	5700	40	118	75,5	12,5	25/20	22	44
B8 - 50x32x55	5804	50	130	80,0	16,0	32/25	30	55
B8 - 60x32x60	9366	60	145	82,5	16,0	32/25	30	60



**VDI  
DIN 69880**

**PORTAUTENSILI CON SEDE LONGITUDINALE DESTRI**  
AXIAL TOOLHOLDERS - RIGHT HAND

**C1**

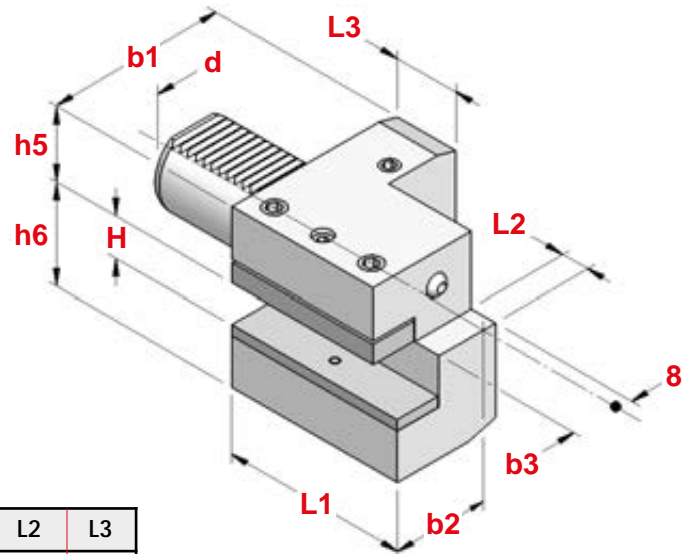


TIPO	Art.	d	b1	b2	b3	H	L1	L2	L3
C1- 16x12x44	5702	16	43	24,0	13,0	12	44	5,0	20
C1- 20x16x50	5704	20	65	40,0	26,0	16/12	50	—	30
C1- 20x16x55	5701	20	52	27,0	13,0	16/12	55	7,0	30
C1- 30x20x70	5703	30	70	35,0	17,0	20/16	70	10,0	30
C1- 40x25x85	5705	40	85	42,5	21,0	25/20	85	12,5	30
C1- 50x32x100	5806	50	100	50,0	26,0	32/25	100	16,0	40
C1- 60x32x125	9367	60	125	62,5	33,0	32/25	125	16,0	40

**VDI  
DIN 69880**

**PORTAUTENSILI CON SEDE LONGITUDINALE SINISTRI**  
AXIAL TOOLHOLDERS - LEFT HAND

**C2**

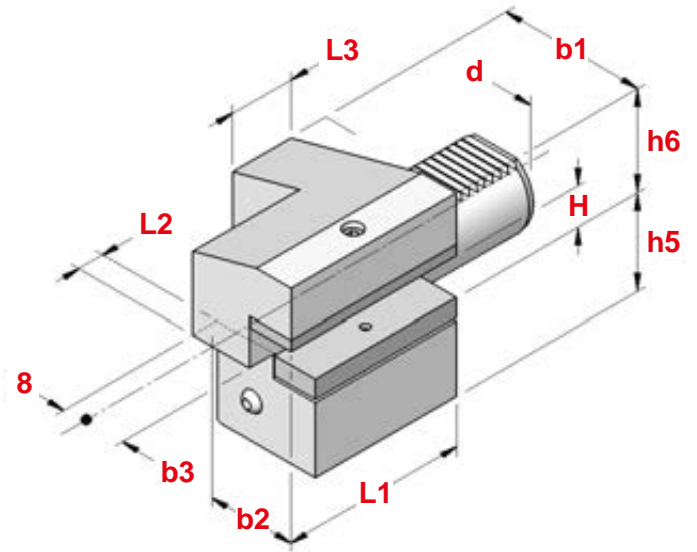


TIPO	Art.	d	b1	b2	b3	H	L1	L2	L3
C2- 16x12x44	5707	16	43	24,0	13,0	12	44	5,0	20
C2- 20x16x50	5722	20	65	40,0	26,0	16/12	50	—	30
C2- 30x20x70	5724	30	76	41,0	23,0	20/16	70	10,0	30
C2- 40x25x85	5727	40	90	47,5	25,5	25/20	85	12,5	30
C2- 50x32x100	5807	50	105	55,0	30,5	32/25	100	16,0	40
C2- 60x32x125	9368	60	125	62,5	33,0	32/25	125	16,0	40

**VDI  
DIN 69880**

**PORTAUTENSILI CON SEDE LONGITUDINALE ROVESCIIATI DESTRI**  
AXIAL UPSIDE-DOWN TOOLHOLDERS - RIGHT HAND

**C3**

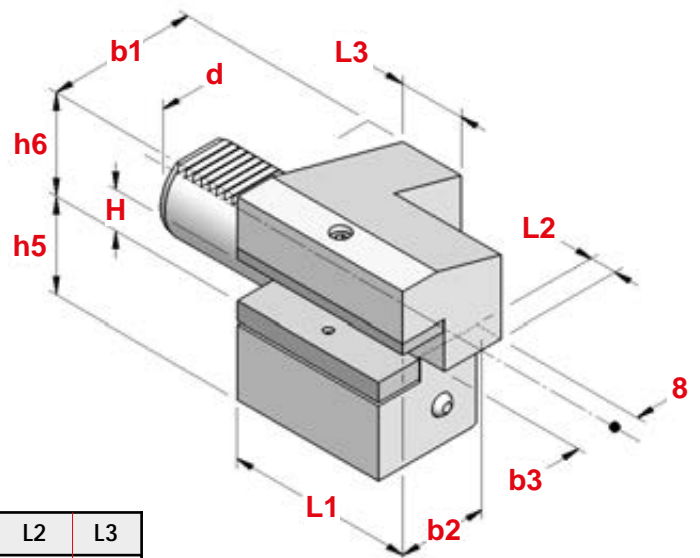


TIPO	Art.	d	b1	b2	b3	H	L1	L2	L3
C3- 16x12x44	5716	16	43	24,0	13,0	12	44	5,0	20
C3- 20x16x50	5736	20	65	40,0	26,0	16/12	50	—	30
C3- 20x16x55	5737	20	52	27,0	13,0	16/12	55	7,0	30
C3- 30x20x70	5740	30	70	35,0	17,0	20/16	70	10,0	30
C3- 40x25x85	5742	40	85	42,5	21,0	25/20	85	12,5	30
C3- 50x32x100	5808	50	100	50,0	26,0	32/25	100	16,0	40
C3- 60x32x125	9369	60	125	62,5	33,0	32/25	125	16,0	40

**VDI  
DIN 69880**

**PORTAUTENSILI CON SEDE LONGITUDINALE ROVESCIIATI SINISTRI**  
AXIAL UPSIDE-DOWN TOOLHOLDERS - LEFT HAND

**C4**

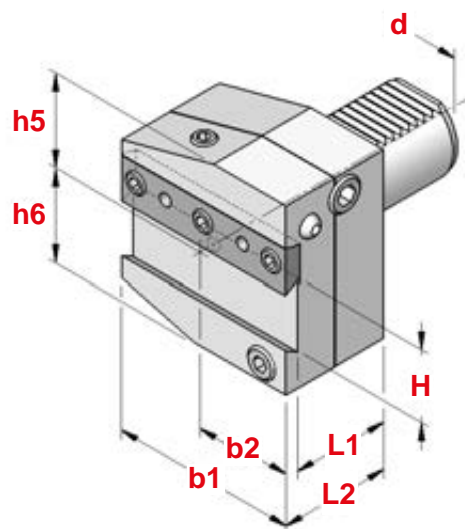


TIPO	Art.	d	b1	b2	b3	H	L1	L2	L3
C4- 16x12x44	5614	16	43	24,0	13,0	12	44	5,0	20
C4- 20x16x50	5743	20	65	40,0	26,0	16/12	50	—	30
C4- 30x20x70	5618	30	76	41,0	23,0	20/16	70	10,0	30
C4- 40x25x85	5746	40	90	47,5	25,5	25/20	85	12,5	30
C4- 50x32x100	5809	50	105	55,0	30,5	32/25	100	16,0	40
C4- 60x32x125	9370	60	125	62,5	33,0	32/25	125	16,0	40

**VDI  
DIN 69880**

**PORTAUTENSILI REGOLABILI CON SEDE PER LAMA DA TAGLIO DESTRI**  
*TOOLHOLDERS FOR CUT OFF TOOLS ADJUSTABLE IN HEIGHT - RIGHT HAND*

**CUT 1**

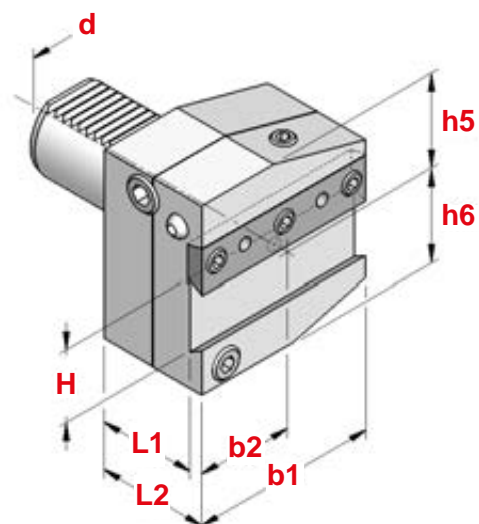


TIPO	Art.	d	b1	b2	H	h5	h6	L1	L2
CUT1-20x26	7917	20	60	30,0	26	28	36,0	44	50
CUT1-30x26	7918	30	70	35,0	26	32	39,0	44	50
CUT1-40x26	7919	40	85	42,5	26	43	41,5	44	50
CUT1-40x32	7920	40	85	42,5	32	43	41,5	44	50
CUT1-50x26	7921	50	100	50,0	26	43	45,0	44	50
CUT1-50x32	7922	50	100	50,0	32	43	45,0	44	50
CUT1-60x32	7923	60	125	62,5	32	48	55,0	44	50

**VDI  
DIN 69880**

**PORTAUTENSILI REGOLABILI CON SEDE PER LAMA DA TAGLIO SINISTRI**  
*TOOLHOLDERS FOR CUT OFF TOOLS ADJUSTABLE IN HEIGHT - LEFT HAND*

**CUT 2**

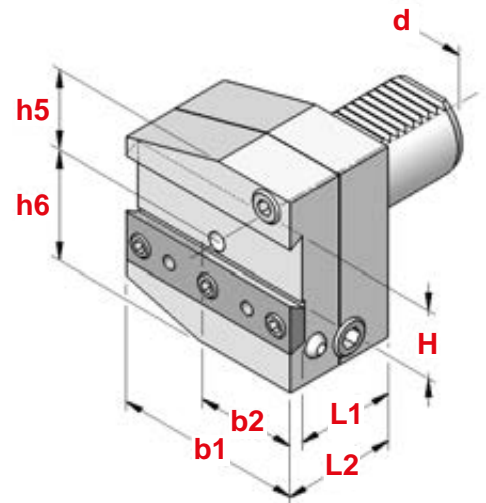


TIPO	Art.	d	b1	b2	H	h5	h6	L1	L2
CUT2-20x26	7924	20	60	30,0	26	28	36,0	44	50
CUT2-30x26	7925	30	70	35,0	26	32	39,0	44	50
CUT2-40x26	7926	40	85	42,5	26	43	41,5	44	50
CUT2-40x32	7927	40	85	42,5	32	43	41,5	44	50
CUT2-50x26	7928	50	100	50,0	26	43	45,0	44	50
CUT2-50x32	7929	50	100	50,0	32	43	45,0	44	50
CUT2-60x32	7930	60	125	62,5	32	48	55,0	44	50

**VDI  
DIN 69880**

**PORTAUTENSILI REGOLABILI CON SEDE PER LAMA DA TAGLIO  
ROVESCIA TI DESTRI**  
UPSIDE-DOWN TOOLHOLDERS FOR CUT OFF TOOLS ADJUSTABLE IN HEIGHT - RIGHT HAND

**CUT 3**

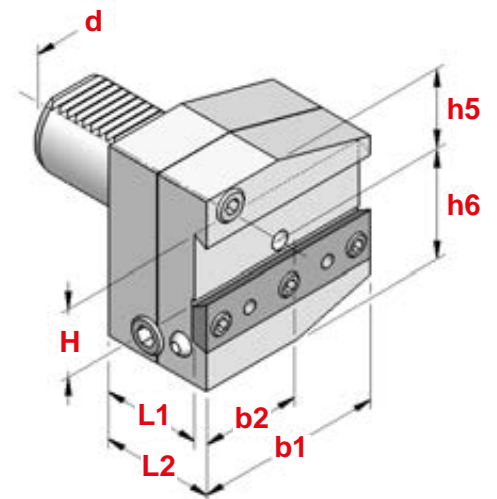


TIPO	Art.	d	b1	b2	H	h5	h6	L1	L2
CUT3-30x26	7931	30	70	35,0	26	38	35,0	44	50
CUT3-40x26	7932	40	85	42,5	26	43	41,5	44	50
CUT3-40x32	7933	40	85	42,5	32	43	41,5	44	50
CUT3-50x26	7934	50	100	50,0	26	43	45,0	44	50
CUT3-50x32	7935	50	100	50,0	32	43	45,0	44	50
CUT3-60x32	7936	60	125	62,5	32	48	55,0	44	50

**VDI  
DIN 69880**

**PORTAUTENSILI REGOLABILI CON SEDE PER LAMA DA TAGLIO  
ROVESCIA TI SINISTRI**  
UPSIDE-DOWN TOOLHOLDERS FOR CUT OFF TOOLS ADJUSTABLE IN HEIGHT - LEFT HAND

**CUT 4**

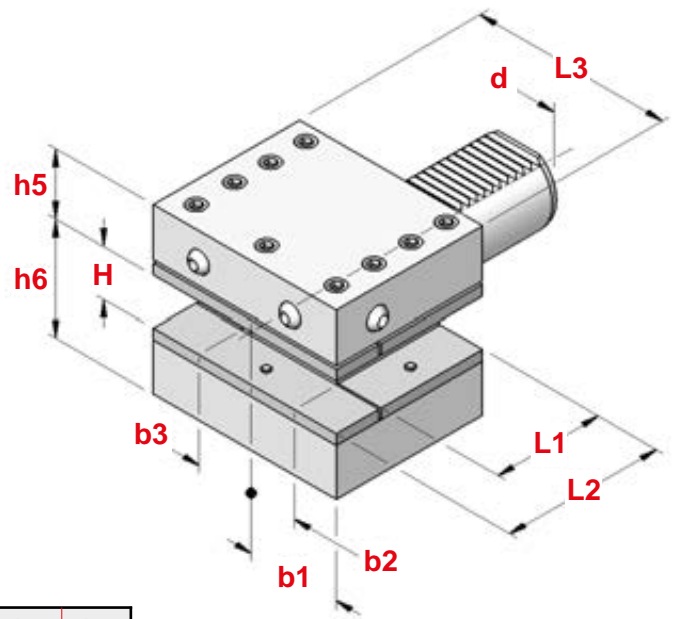


TIPO	Art.	d	b1	b2	H	h5	h6	L1	L2
CUT4-30x26	7937	30	70	35,0	26	38	35,0	44	50
CUT4-40x26	7938	40	85	42,5	26	43	41,5	44	50
CUT4-40x32	7939	40	85	42,5	32	43	41,5	44	50
CUT4-50x26	7940	50	100	50,0	26	43	45,0	44	50
CUT4-50x32	7941	50	100	50,0	32	43	45,0	44	50
CUT4-60x32	7942	60	125	62,5	32	48	55,0	44	50

**VDI  
DIN 69880**

**PORTAUTENSILI A PIU' SEDI RETTANGOLARI**  
*TOOLHOLDERS WITH MULTIPLE SEATS*

**D1**

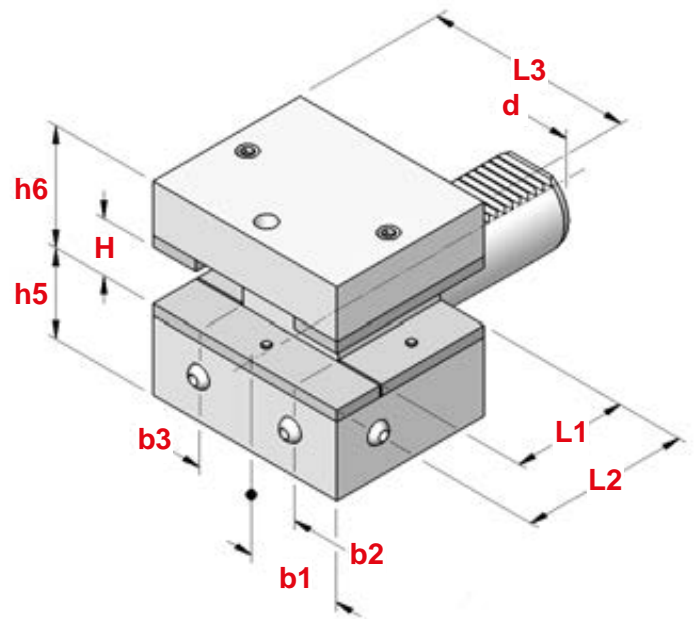


TIPO	Art.	d	b1	b2	b3	H	L1	L2	L3
D1- 30x20x60	5748	30	35,0	17	23,0	20/16	42	60	76
D1- 40x25x72	5750	40	42,5	21	25,5	25/20	50	72	90
D1- 50x32x85	5810	50	50,0	26	30,5	32/25	60	85	105
D1- 60x32x110	9371	60	57,5	33	33,0	32/25	85	110	115

**VDI  
DIN 69880**

**PORTAUTENSILI A PIU' SEDI RETTANGOLARI ROVESCIA TI**  
*UPSIDE-DOWN TOOLHOLDERS WITH MULTIPLE SEATS*

**D2**

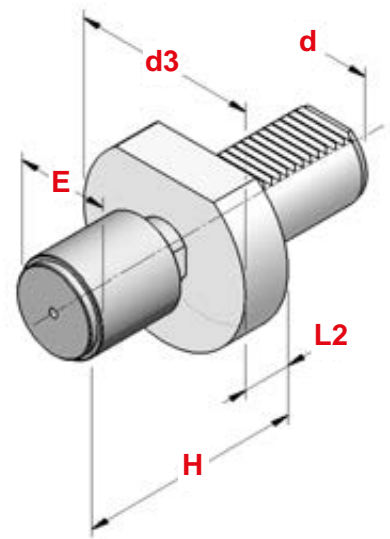


TIPO	Art.	d	b1	b2	b3	H	L1	L2	L3
D2- 30x20x60	5752	30	35,0	17	23,0	20/16	42	60	76
D2- 40x25x72	5754	40	42,5	21	25,5	25/20	50	72	90
D2- 50x32x85	5811	50	50,0	26	30,5	32/25	60	85	105
D2- 60x32x110	9372	60	57,5	33	33,0	32/25	85	110	115

**VDI  
DIN 69880**

**FERMOBARRA ROTANTI REGOLABILI**  
ROTARY ADJUSTABLE BAR-STOP

**BS 1**

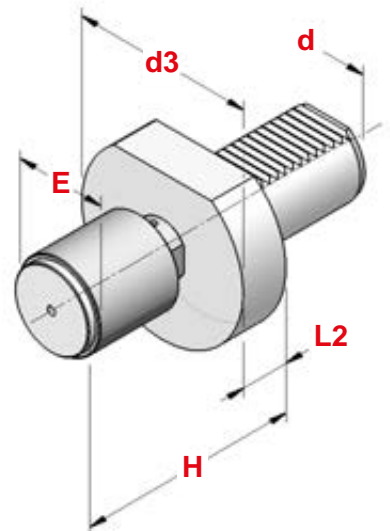


TIPO	Art.	d	H	d3	L2	E
BS 1 - 20 x 34	7943	20	74 - 87	50	30	34
BS 1 - 20 x 42	7944	20	82 - 95	50	30	42
BS 1 - 30 x 42	7945	30	68 - 100	68	16	42
BS 1 - 30 x 56	7946	30	68 - 100	68	16	56
BS 1 - 40 x 42	7947	40	74 - 100	83	22	42
BS 1 - 40 x 56	7948	40	74 - 100	83	22	56
BS 1 - 50 x 42	7949	50	82 - 110	98	30	42
BS 1 - 50 x 56	7950	50	82 - 110	98	30	56

**VDI  
DIN 69880**

**FERMOBARRA ROTANTI REGOLABILI AMMORTIZZATI**  
DAMPED ROTARY ADJUSTABLE BAR-STOP

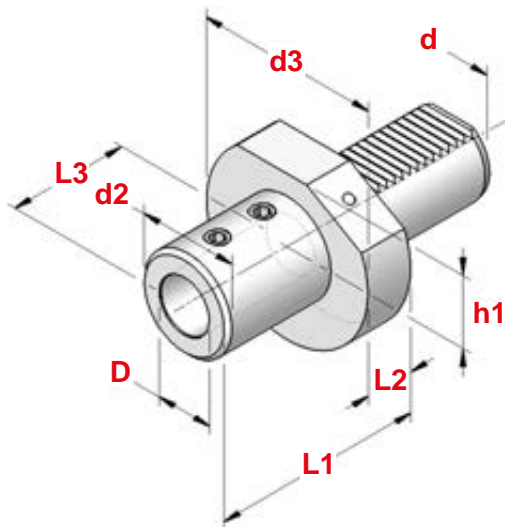
**BS 2**



TIPO	Art.	d	H	d3	L2	E
BS 2 - 20 x 34	5787	20	82 - 95	50	30	34
BS 2 - 20 x 42	5788	20	82 - 95	50	30	42
BS 2 - 30 x 42	5789	30	68 - 100	68	16	42
BS 2 - 30 x 56	3586	30	68 - 100	68	16	56
BS 2 - 40 x 42	5790	40	74 - 100	83	22	42
BS 2 - 40 x 56	3587	40	74 - 100	83	22	56
BS 2 - 50 x 42	5832	50	82 - 110	98	30	42
BS 2 - 50 x 56	3588	50	82 - 110	98	30	56

**CARATTERISTICHE :** a differenza del normale fermobarra rotante, nel modello ammortizzato, oltre al cuscinetto radiale ed al reggispinta, è presente una serie di molle a tazza per meglio assorbire eventuali urti della barra .

**CHARACTERISTICS:** unlike normal rotary bar stop, inside damped model, besides radial bearing and thrust bearing, there is a set of spring washers in order to absorb well any bar shoves.



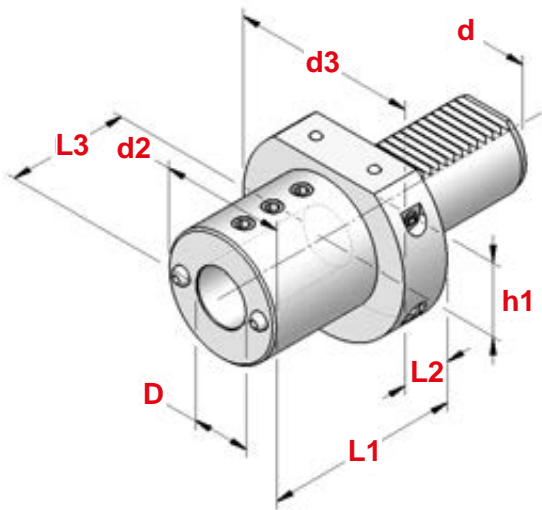
TIPO	Art.	d	d2	D	L1	L2	L3	
E1 - 20x6*	9343	20	25	6	50	18	36	4970
E1 - 20x8*	9344	20	28	8	50	18	36	4971
E1 - 20x10*	9345	20	35	10	54	18	40	4972
E1 - 20x12*	9346	20	42	12	59	18	45	4973
E1 - 20x16	5728	20	36	16	67	18	54	0403
E1 - 20x20	5729	20	40	20	67	18	54	0403
E1 - 20x25	5730	20	45	25	71	18	58	0417
E1 - 30x6*	9347	30	25	6	50	22	36	4970
E1 - 30x8*	9348	30	28	8	50	22	36	4971
E1 - 30x10*	9349	30	35	10	54	22	40	4972
E1 - 30x12*	9350	30	42	12	59	22	45	4973
E1 - 30x16	5731	30	36	16	67	22	54	0403
E1 - 30x20	5732	30	40	20	67	22	54	0403
E1 - 30x25	5733	30	45	25	71	22	58	0417
E1 - 30x32	5734	30	52	32	75	22	61	0417
E1 - 30x40	5735	30	65	40	90	22	72	0493
E1 - 40x6*	9351	40	25	6	50	22	36	4970
E1 - 40x8*	9352	40	28	8	50	22	36	4971
E1 - 40x10*	9353	40	35	10	54	22	40	4972
E1 - 40x12*	9354	40	42	12	58	22	45	4973
E1 - 40x16	5833	40	36	16	67	22	54	0403
E1 - 40x20	5834	40	40	20	67	22	54	0403
E1 - 40x25	5835	40	45	25	75	22	59	0417
E1 - 40x32	5836	40	52	32	75	22	61	0417
E1 - 40x40	5837	40	65	40	90	22	73	0493
E1 - 40x50	9355	40	70	50	100	22	83	0493
E1 - 50x16	5838	50	36	16	80	30	54	0403
E1 - 50x20	5839	50	40	20	80	30	54	0403
E1 - 50x25	5840	50	45	25	80	30	59	0417
E1 - 50x32	5841	50	52	32	80	30	63	0417
E1 - 50x40	5842	50	65	40	90	30	73	0493
E1 - 50x50	5843	50	75	50	100	30	83	0493
E1 - 60x16	9373	60	36	16	80	30	54	0403
E1 - 60x20	9374	60	40	20	80	30	54	0403
E1 - 60x25	9375	60	45	25	80	30	59	0417
E1 - 60x32	9376	60	52	32	80	30	63	0417
E1 - 60x40	9377	60	65	40	90	30	73	0493
E1 - 60x50	9378	60	75	50	100	30	83	0493

\* = L'asse del grano di bloccaggio utensile è inclinato di 2°  
al fine di migliorarne il preasettaggio

\* = Tool locking screw axis is 2° inclined in order to improve its presetting.



**E2**

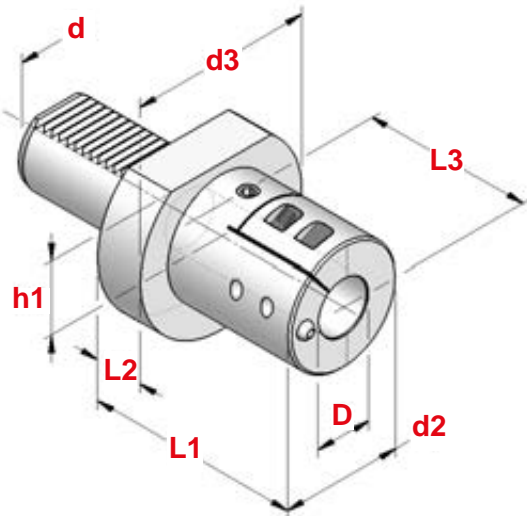


TIPO	Art.	d	d2	D	L1	L2	L3	
E2 - 16x6	9336	16	32	6	44	13	34	0371
E2 - 16x8	9337	16	32	8	44	13	34	0371
E2 - 16x10	9338	16	32	10	44	13	34	0371
E2 - 16x12	9339	16	40	12	44	13	34	0375
E2 - 16x16	9340	16	40	16	44	13	34	0375
E2 - 20x6	5725	20	40	6	50	18	42	0208
E2 - 20x8	5762	20	40	8	50	18	42	0208
E2 - 20x10	5763	20	40	10	50	18	42	0382
E2 - 20x12	5764	20	40	12	50	18	42	0382
E2 - 20x16	5765	20	42	16	50	18	42	0375
E2 - 20x20	5766	20	49	20	50	18	42	0375
E2 - 20x25	5767	20	49	25	60	18	52	4971
E2 - 30x6	5741	30	55	6	60	22	43	0248
E2 - 30x8	5768	30	55	8	60	22	43	0248
E2 - 30x10	5769	30	55	10	60	22	43	0248
E2 - 30x12	5631	30	55	12	60	22	43	0183
E2 - 30x16	5632	30	55	16	60	22	55	0183
E2 - 30x20	5633	30	55	20	60	22	54	0382
E2 - 30x25	5622	30	55	25	60	22	54	0382
E2 - 30x30	5623	30	67	30	75	22	61	0382
E2 - 30x32	5629	30	67	32	75	22	61	0382
E2 - 30x40	5628	30	67	40	75	22	66	0382
E2 - 40x6	5747	40	55	6	75	22	43	0248
E2 - 40x8	5749	40	55	8	75	22	43	0183
E2 - 40x10	5751	40	55	10	75	22	43	0183
E2 - 40x12	5770	40	55	12	75	22	58	0183
E2 - 40x16	5771	40	55	16	75	22	61	0186
E2 - 40x20	5772	40	55	20	75	22	61	0377
E2 - 40x25	5773	40	55	25	75	22	61	0186
E2 - 40x30	5786	40	82	30	75	22	61	0377
E2 - 40x32	5774	40	82	32	75	22	61	0186
E2 - 40x40	5775	40	82	40	90	22	76	0377
E2 - 40x50	5785	40	98	50	100	—	86	0260
E2 - 50x12	5805	50	68	12	90	30	71	0249
E2 - 50x16	5812	50	68	16	90	30	76	0250
E2 - 50x20	5813	50	68	20	90	30	76	0257
E2 - 50x25	5814	50	68	25	90	30	76	0257
E2 - 50x30	5801	50	69	30	90	30	76	0277
E2 - 50x32	5815	50	69	32	90	30	76	0277
E2 - 50x40	5816	50	98	40	90	—	76	4973
E2 - 50x50	5817	50	98	50	100	—	86	0260
E2 - 60x16	9379	60	68	16	90	30	76	0250
E2 - 60x20	9380	60	68	20	90	30	76	0257
E2 - 60x25	9381	60	68	25	90	30	76	0257
E2 - 60x32	9382	60	68	32	90	30	76	0277
E2 - 60x40	9383	60	98	40	90	30	76	0277
E2 - 60x50	9384	60	98	50	100	30	86	4973





**ES 2**



TIPO	Art.	d	d2	D	L1	L2	L3	
ES 2 - 30x 6	7951	30	32	6	75	22	65	0371
ES 2 - 30x 8	7952	30	34	8	75	22	65	0371
ES 2 - 30x 10	7953	30	38	10	75	22	65	0375
ES 2 - 30x 12	7954	30	38	12	75	22	65	0375
ES 2 - 30x 16	7955	30	42	16	75	22	70	4972
ES 2 - 30x 20	7956	30	42	20	75	22	66	4972
ES 2 - 30x 25	7957	30	48	25	75	22	66	4972
ES 2 - 30x 32	7958	30	56	32	75	22	65	4972
ES 2 - 30x 40	7959	30	65	40	75	22	67	0390
ES 2 - 40x 6	7960	40	32	6	75	22	65	0371
ES 2 - 40x 8	7961	40	34	8	75	22	65	0371
ES 2 - 40x 10	7962	40	38	10	75	22	65	0375
ES 2 - 40x 12	7963	40	38	12	75	22	65	0375
ES 2 - 40x 16	7964	40	42	16	75	22	68	4972
ES 2 - 40x 20	7965	40	42	20	85	22	80	4972
ES 2 - 40x 25	7966	40	48	25	85	22	76	4972
ES 2 - 40x 32	7967	40	56	32	85	22	76	4972
ES 2 - 40x 40	7968	40	65	40	97	22	90	0390
ES 2 - 50x 16	7969	50	42	16	93	30	85	4972
ES 2 - 50x 20	7970	50	42	20	93	30	85	4972
ES 2 - 50x 25	7971	50	48	25	98	30	90	4972
ES 2 - 50x 32	7972	50	56	32	98	30	90	4972
ES 2 - 50x 40	7973	50	65	40	115	30	105	0390
ES 2 - 50x 50	7974	50	76	50	125	30	112	0390
ES 2 - 60x 25	7975	60	48	25	98	30	90	4972
ES 2 - 60x 32	7976	60	56	32	98	30	90	4972
ES 2 - 60x 40	7977	60	65	40	115	30	105	0390
ES 2 - 60x 50	7978	60	76	50	125	30	112	0390

**CARATTERISTICHE**

- La chiusura a collare favorisce il fissaggio di utensili particolarmente lunghi e risulta adatta a barení antivibranti in metallo duro
- Fissaggio effettuato con 3 viti : una direttamente sul piano mentre le altre due stringono a collare lo stelo cilindrico.
- Frontalmente viene tracciata la riga di riferimento per posizionare i barení con stelo totalmente cilindrico.

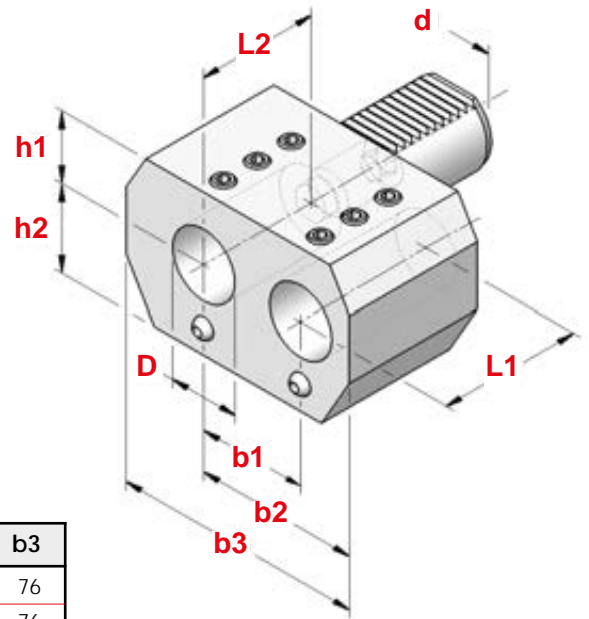
**CHARACTERISTICS**

- Collar gripping helps clamping of particularly long tools and turns out suitable for vibration-damping boring bars with hard metal shank.
- Fixing occurs by 3 screws : one directly on flat on the shank, differently the other two grip the cylindrical shank as collar.
- On the front is engraved the reference mark to set boring bars with completely cylindrical shank.

**VDI  
DIN 69880**

**PORTABARENI DOPPI DESTRI**  
DOUBLE BORING BAR HOLDERS - RIGHT HAND

**ES 7**

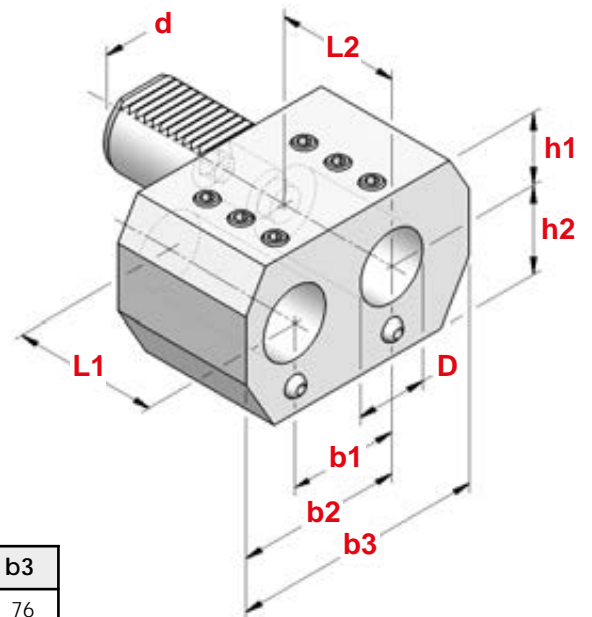


TIPO	Art.	d	D	h1	h2	L1	L2	b1	b2	b3
ES 7 - 20x16	7979	20	16	25,0	25,0	45	42	32	51	76
ES 7 - 20x20	7980	20	20	25,0	25,0	45	42	32	51	76
ES 7 - 30x25	7981	30	25	28,0	32,0	56	52	45	65	95
ES 7 - 40x32	7982	40	32	32,5	40,0	66	60	50	75	115
ES 7 - 50x32	7983	50	32	32,5	47,5	66	60	50	75	115
ES 7 - 50x50	7984	50	50	35,0	49,0	90	80	68	103	152

**VDI  
DIN 69880**

**PORTABARENI DOPPI SINISTRI**  
DOUBLE BORING BAR HOLDERS - LEFT HAND

**ES 8**



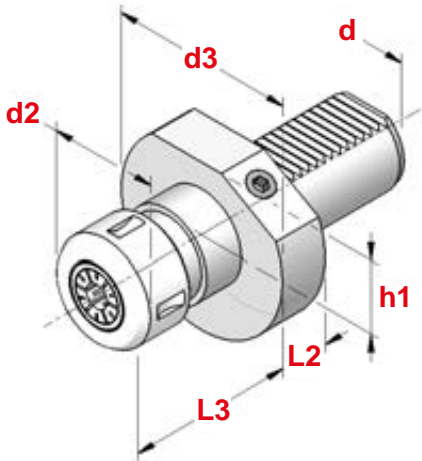
TIPO	Art.	d	D	h1	h2	L1	L2	b1	b2	b3
ES 8 - 20x16	7985	20	16	25,0	25,0	45	42	32	51	76
ES 8 - 20x20	7986	20	20	25,0	25,0	45	42	32	51	76
ES 8 - 30x25	7987	30	25	28,0	32,0	56	52	45	65	95
ES 8 - 40x32	7988	40	32	32,5	40,0	66	60	50	75	115
ES 8 - 50x32	7989	50	32	32,5	47,5	66	60	50	75	115
ES 8 - 50x50	7990	50	50	35,0	49,0	90	80	68	103	152

**VDI  
DIN 69880**

**PORTAPINZE PER PINZE EOC DIN 6388**  
DIN 6388 COLLET CHUCKS



**E3**



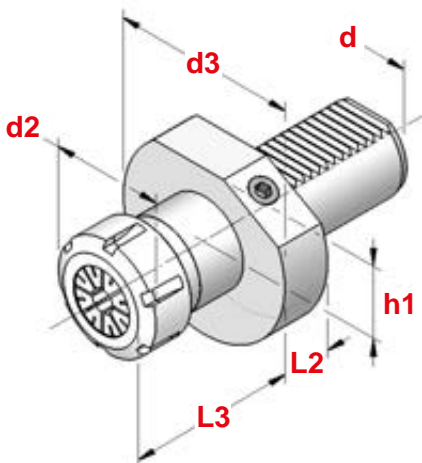
TIPO	Art.	d	d2	CAPACITA'	L2	L3			
E3-16x16	5609	16	43	2 ÷ 16	13	44	4067	2883	0768
E3-20x16	5610	20	43	2 ÷ 16	18	39	4067	2883	0768
E3-30x16	5611	30	43	2 ÷ 16	22	35	4067	2883	0768
E3-30x20	5612	30	52	2 ÷ 20	22	40	4008	2908	0783
E3-30x25	5613	30	60	2 ÷ 25	22	53	4068	2909	0769
E3-30x32	5626	30	72	4 ÷ 32	22	68	4069	2910	0770
E3-40x16	5282	40	43	2 ÷ 16	22	35	4067	2883	0768
E3-40x20	5283	40	52	2 ÷ 20	22	40	4008	2908	0783
E3-40x25	5645	40	60	2 ÷ 25	22	53	4068	2909	0769
E3-40x32	5646	40	72	4 ÷ 32	22	68	4069	2910	0770
E3-50x25	5652	50	60	2 ÷ 25	30	45	4068	2909	0769
E3-50x32	5653	50	72	4 ÷ 32	30	60	4069	2910	0770
E3-60x25	9385	60	60	2 ÷ 25	30	45	4068	2909	0769
E3-60x32	9386	60	72	4 ÷ 32	30	60	4069	2910	0770

**VDI  
DIN 69880**

**PORTAPINZE PER PINZE ER DIN 6499**  
DIN 6499 COLLET CHUCKS



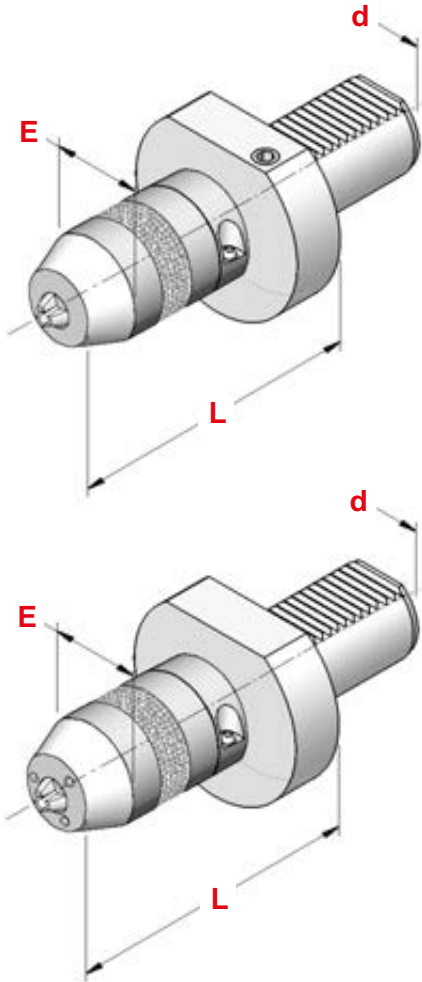
**E4**



TIPO	Art.	d	d2	CAPACITA'	L2	L3			
E4-16x16	3076	16	32	1 ÷ 10	13	31	4993	3698	0364
E4-16x20	3078	16	35	1 ÷ 13	13	31	4994	3699	0787
E4-20x16	3547	20	32	1 ÷ 10	18	26	4993	3698	0364
E4-20x20	3303	20	35	1 ÷ 13	18	41	4994	3699	0787
E4-20x25	3304	20	42	1 ÷ 16	18	47	4995	3669	0996
E4-20x32	3549	20	50	2 ÷ 20	18	49	4996	3670	0988
E4-30x16	3550	30	32	1 ÷ 10	22	26	4993	3698	0364
E4-30x20	3551	30	35	1 ÷ 13	22	37	4994	3699	0787
E4-30x25	3305	30	42	1 ÷ 16	22	35	4995	3669	0996
E4-30x32	3306	30	50	2 ÷ 20	22	56	4996	3670	0988
E4-30x40	3307	30	63	3 ÷ 30	22	58	4997	3671	0821
E4-40x20	3553	40	35	1 ÷ 13	22	37	4994	3699	0787
E4-40x25	3554	40	42	1 ÷ 16	22	35	4995	3669	0996
E4-40x32	3308	40	50	2 ÷ 20	22	56	4996	3670	0988
E4-40x40	3309	40	63	3 ÷ 30	22	58	4997	3671	0821
E4-50x25	2304	50	42	1 ÷ 16	30	37	4995	3669	0996
E4-50x32	2320	50	50	2 ÷ 20	30	62	4996	3670	0988
E4-50x40	3311	50	63	3 ÷ 30	30	50	4997	3671	0821
E4-60x32	9387	60	50	2 ÷ 20	30	48	4996	3670	0988
E4-60x40	9388	60	63	3 ÷ 30	30	50	4997	3671	0821

# VDI DIN 69880

## AUTOSERRANTI CON PASSAGGIO CENTRALE DEL REFRIGERANTE MONOLITHIC DRILL CHUCKS WITH MIDDLE COOLING PASSING



TIPO	Art.	d	E	L	CAPACITA'	
VDI 20 - DCU 13 C	9303	20	50	88	1 ÷ 13	2372
VDI 30 - DCU 13 C	9304	30	50	93	1 ÷ 13	
VDI 30 - DCU 16 C	9305	30	50	98	3 ÷ 16	2372
VDI 40 - DCU 13 C	9306	40	50	93	1 ÷ 13	
VDI 40 - DCU 16 C	9307	40	50	98	3 ÷ 16	2372
VDI 50 - DCU 13 C	9308	50	50	100	1 ÷ 13	
VDI 50 - DCU 16 C	9309	50	50	105	3 ÷ 16	2372



## CON UGELLI DI REFRIGERAZIONE WITH COOLING NOZZLES

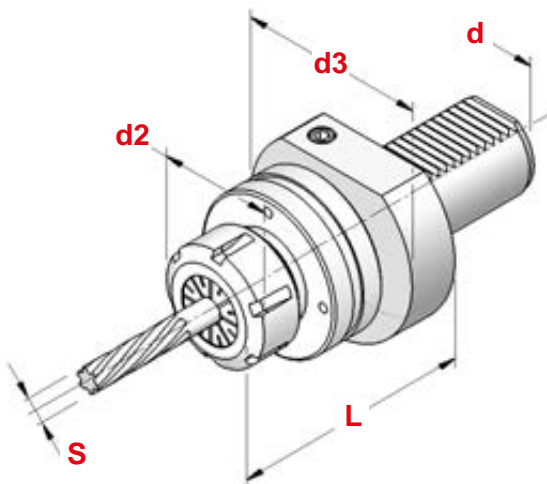
TIPO	Art.	d	E	L	CAPACITA'	
VDI 30 - DCU 13 E	9312	30	63	93	1 ÷ 13	2372
VDI 30 - DCU 16 E	9313	30	63	98	3 ÷ 16	
VDI 40 - DCU 13 E	9314	40	63	93	1 ÷ 13	2372
VDI 40 - DCU 16 E	9315	40	63	98	3 ÷ 16	
VDI 50 - DCU 13 E	9316	50	63	100	1 ÷ 13	2372
VDI 50 - DCU 16 E	9317	50	63	105	3 ÷ 16	



# VDI DIN 69880

## PORTA ALESATORI FLOTTANTI PER PINZE ER DIN 6499 FLOATING REAMER HOLDERS FOR DIN 6499 COLLETS

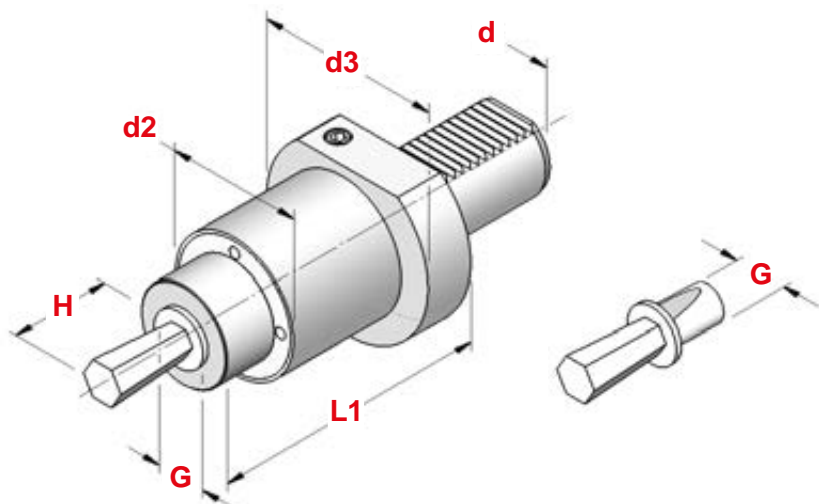
TIPO	Art.	d	d2	d3	S	L	CAPACITA'			
VDI 20 RM - ER 25	9300	20	42	57	1	57	1 ÷ 16	4995	3669	0996
VDI 30 RM - ER 32	9301	30	50	68	1,5	72	2 ÷ 20	4996	3670	0988
VDI 40 RM - ER 32	9302	40	50	83	1,5	74	2 ÷ 20	4996	3670	0988



# VDI DIN 69880

## PORTAUTENSILI A BROCCIARE BROACH TOOLHOLDERS

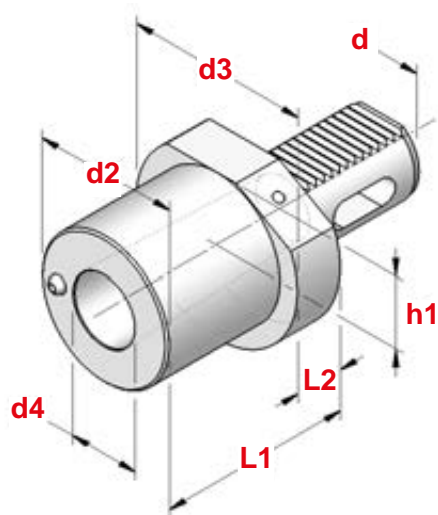
TIPO	Art.	d	d2	d3	G	L1	H
VDI 20 - G 12	9319	20	44	50	12	57	25
VDI 30 - G 12	9320	30	58	68	12	83	25
VDI 30 - G 16	9321	30	58	68	16	83	40
VDI 40 - G 12	9322	40	58	83	12	83	25
VDI 40 - G 16	9323	40	58	83	16	83	40



# VDI DIN 69880

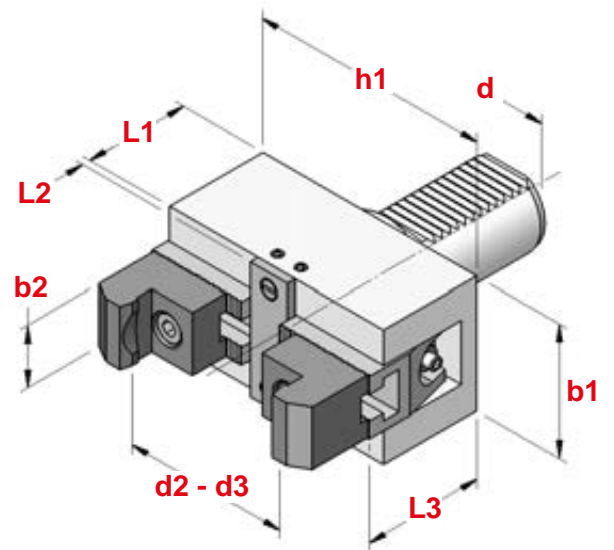
## PORTAUTENSILI CON SEDE CONO MORSE MORSE TAPER TOOLHOLDERS

TIPO	Art.	d	d2	CM	d4	L1	L2
F 16-MK-D1	5709	16	—	1	12,065	31,5	—
F 16-MK-D2	5710	16	—	2	17,780	72,0	—
F 20-MK-D1	5776	20	—	1	12,065	23,0	—
F 20-MK-D2*	5792	20	45	2	17,780	41,0	22
F 30-MK-D1	5630	30	—	1	12,065	27,0	—
F 30-MK-D2	5625	30	55	2	17,780	36,0	27
F 30-MK-D3	5818	30	55	3	23,825	66,0	41
F 40-MK-D1	5723	40	55	1	12,065	23,0	22
F 40-MK-D2	5777	40	55	2	17,780	36,0	22
F 40-MK-D3	5778	40	58	3	23,825	36,0	22
F 40-MK-D4	5779	40	68	4	31,267	80,0	22
F 50-MK-D2	5819	50	55	2	17,780	36,0	30
F 50-MK-D3	5820	50	58	3	23,825	45,0	30
F 50-MK-D4	5821	50	68	4	31,267	55,0	30
F 50-MK-D5*	5949	50	75	5	44,399	72,0	30
F 60-MK-D2	9389	60	55	2	17,780	35,0	30
F 60-MK-D3	9390	60	58	3	23,825	45,0	30
F 60-MK-D4	9391	60	68	4	31,267	55,0	30
F 60-MK-D5	9392	60	98	5	44,399	64,0	30



\* = Per poter ospitare il Cono Morse indicato, il codolo cilindrico è privo di dentatura.

\* = Without tooling.

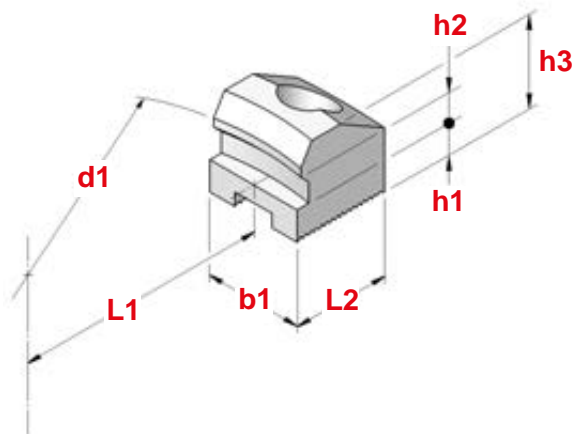


TIPO	Art.	d	d2	d3	b1	b2	h1	L1	L2	L3
H1-16	5661	16	6 ÷ 56	54 ÷ 110	50	28	72	46	4	51
H1-20	5679	20	6 ÷ 56	54 ÷ 110	50	28	72	46	4	51
H1-30	5680	30	6 ÷ 56	54 ÷ 110	50	28	72	46	4	51
H1-40	5681	40	6 ÷ 66	54 ÷ 110	60	28	110	48	4	53
H1-50	5683	50	10 ÷ 75	62 ÷ 125	65	28	130	67	5	73
H1-60	9393	60	10 ÷ 75	62 ÷ 125	65	28	130	67	5	73

La confezione dello Stringibarra comprende 2 coppie di griffe per poter stringere l'intera gamma delle misure (d2-d3).

Bar Clamp wrapping includes 2 couples of jaws to allow clamping the complete range of dimensions (d2-d3).

**GRIFFE  
JAWS**

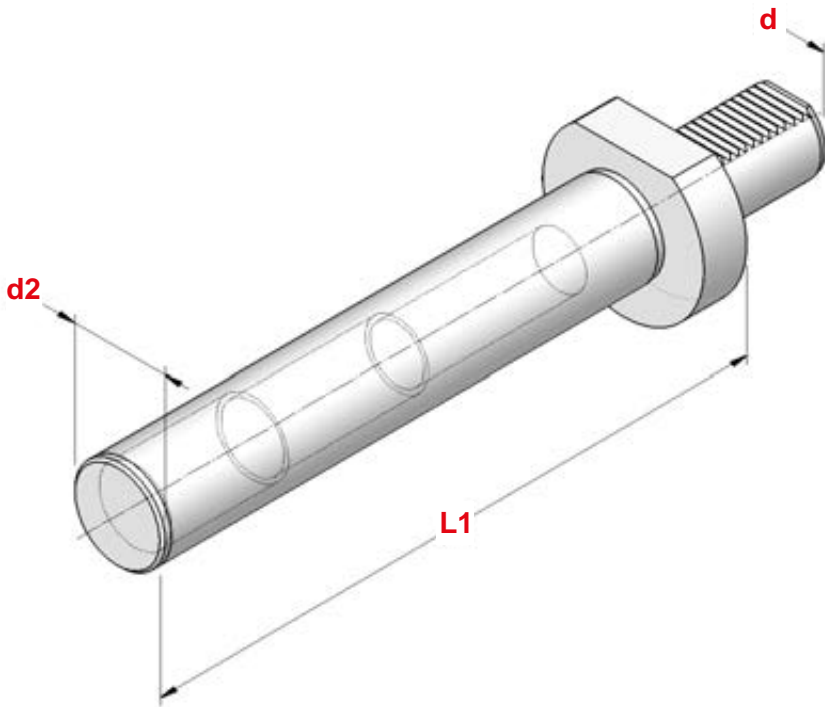


TIPO	Art.	d1	b1	L1	L2	h1	h2	h3
H1.10 30 - 40	5822	75	28	35	28	9	10	26
H1.11 30 - 40	5823	125	28	42	36	18	10	34
H1.10 50 - 60	5824	75	28	35	28	17	10	42
H1.11 50 - 60	5825	125	28	42	36	24	10	42

**VDI  
DIN 69880**

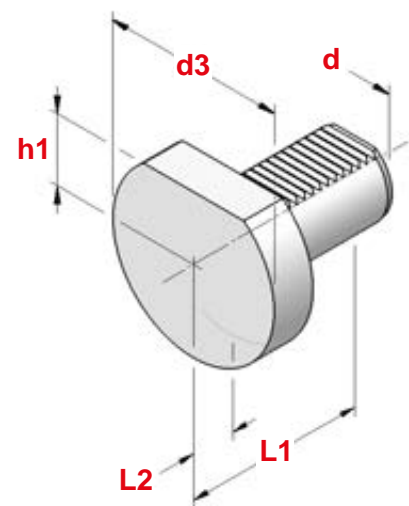
**BARRE DI CONTROLLO**  
TEST ARBORS

TIPO	Art.	d	d2	L1
VDI 16	7894	16	25	200
VDI 20	7895	20	30	220
VDI 30	7896	30	40	230
VDI 40	7897	40	50	300
VDI 50	7898	50	50	300
VDI 60	7899	60	60	300



**VDI  
DIN 69880**

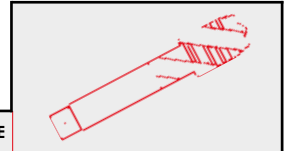
**TAMPONI DI PROTEZIONE IN PLASTICA O IN ACCIAIO**  
PLASTIC OR STEEL BLANKING PLUGS



IN PLASTICA PLASTIC TYPE		IN ACCIAIO STEEL TYPE		d	d3	h1	L1	L2
TIPO	Art.	TIPO	Art.					
Z2 - 16	7991	Z2 - 16 S	7993	16	40	18,0	45	13
Z2 - 20	5826	Z2 - 20 S	7994	20	50	23,0	56	16
Z2 - 30	5827	Z2 - 30 S	7995	30	68	28,0	71	16
Z2 - 40	5828	Z2 - 40 S	7996	40	83	32,5	83	20
Z2 - 50	5829	Z2 - 50 S	7997	50	98	35,0	98	20
Z2 - 60	7992	Z2 - 60 S	7998	60	123	42,5	114	20

**VDI  
DIN 69880**

**MASCHIATORI A CAMBIO RAPIDO CON  
DOPPIA COMPENSAZIONE**  
DOUBLE COMPENSATION QUICK CHANGE TAP HOLDERS



TIPO	Art.	d	d3	L	D	D1	COMPENSAZIONE	
VDI 20 - B.1	5760	20	50	55	38	19	- 9 + 9	M 3 ÷ M 12 (*M16)
VDI 20 - B.2	5761	20	50	77	55	31	-15 + 15	M 6 ÷ M 20 (*M30)
VDI 30 - B.1	5780	30	68	55	38	19	- 9 + 9	M 3 ÷ M 12 (*M16)
VDI 30 - B.2	5781	30	68	77	55	31	-15 + 15	M 6 ÷ M 20 (*M30)
VDI 40 - B.1	5782	40	83	55	38	19	- 9 + 9	M 3 ÷ M 12 (*M16)
VDI 40 - B.2	5783	40	83	77	55	31	-15 + 15	M 6 ÷ M 20 (*M30)
VDI 40 - B.3	5784	40	83	120	79	48	-24 + 24	M14 ÷ M 33 (*M48)
VDI 50 - B.2	5793	50	98	77	55	31	-15 + 15	M 6 ÷ M 20 (*M30)
VDI 50 - B.3	5794	50	98	108	79	48	-24 + 24	M14 ÷ M 33 (*M48)

\* Bussole con grani  
Adapters with screws

