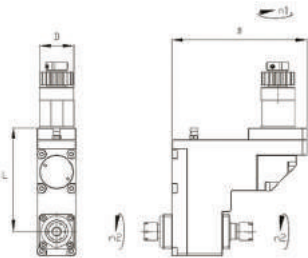
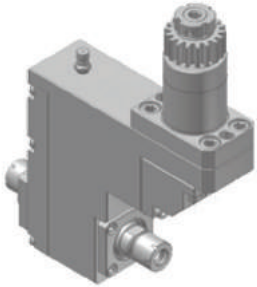


**PORTE-OUTILS ROTATIF AXIAL (CANON)**

**POCIT511001**

RATIO / 1:1  
VR MAX / 6 000  
PINCE / ER11 M  
RÉF. CITIZEN BSE1007

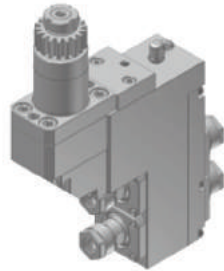


L	B	D
94	133	31

**PORTE-OUTILS ROTATIF DOUBLE AXIAL**

**POCIT541201**

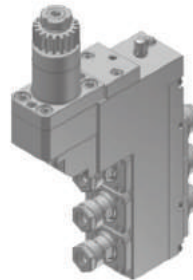
RATIO / 1:1  
VR MAX / 6 000  
PINCE / ER11 A  
RÉF. CITIZEN BSE2007



**PORTE-OUTILS ROTATIF TRIPLE AXIAL**

**POCIT541301**

RATIO / 1:1  
VR MAX / 6 000  
PINCE / ER11 A  
RÉF. CITIZEN BSE507

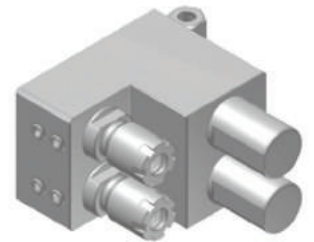


**PORTE-PINCE DÉCALÉ POUR PERÇAGE**

**PROFOND (COL DE CYGNE)**

**POCIT162001**

FIXATION PORTE-OUTILS / Ø 25.4 MM  
PINCE / ER16 M  
PROFONDEUR PERÇAGE MAX / 95 MM  
MACHINE A20 / A32



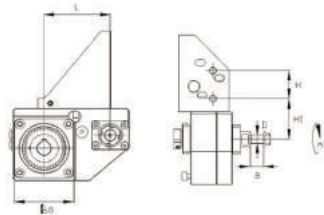
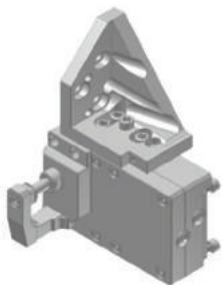
## B12

# PORTE-OUTILS FRONTAUX

**FENDEUR / FRAISEUR**

**POCIT801001**

RATIO / 2:1  
VR MAX / 7 000  
DIAMÈTRE DE FRAISE MAX / Ø 30 MM  
DIAMÈTRE D'ALÉSAGE / Ø 8 MM

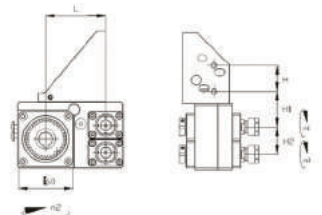
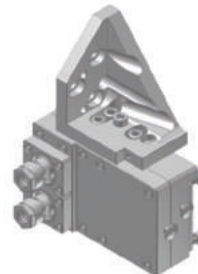


L	B	H	H1	D
67	14	28.5	41	8

**PORTE-OUTILS ROTATIF DOUBLE RADIAL**

**POCIT812001**

RATIO / 2:1  
VR MAX / 7 000  
PINCE / ER11 A

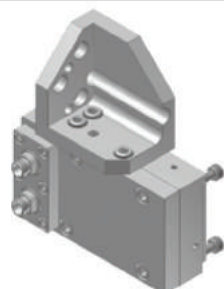


L	H	H1	H2
66	28.5	39	30

**PORTE-OUTILS ROTATIF DOUBLE RADIAL**

**POCIT882001**

RATIO / 2:1  
VR MAX / 7 000  
PINCE / ER8



**PORTE-OUTILS ROTATIF AXIAL**

**POCIT161101**

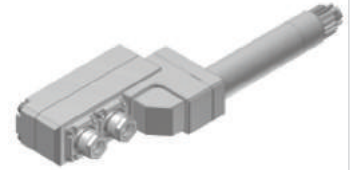
RATIO / 1:1  
VR MAX / 8 000  
PINCE / ER11 A  
RÉF. CITIZEN GSC607



**PORTE-OUTILS ROTATIF DOUBLE RADIAL**

**POCIT441201**

RATIO / 1:1  
VR MAX / 6 000  
PINCE / ER11 A

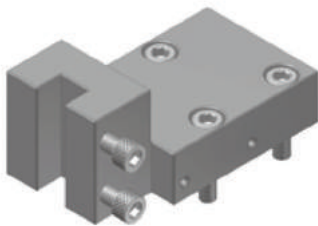


# M16 PORTE-OUTILS POUR TOURELLE

**PLATINE PORTE-OUTILS**

**POCIT160001**

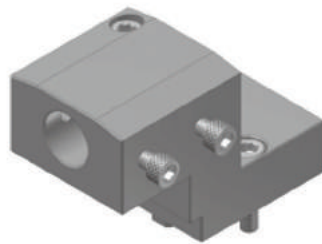
OUTIL CARRÉ / 10 MM  
RÉF. CITIZEN VTF 110



**PLATINE PORTE-BARRE À ALÉSER**

**POCIT160002**

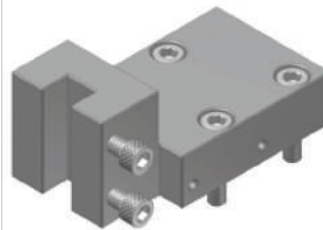
DIAMÈTRE D'ALÉSAGE / Ø 19.05 MM  
RÉF. CITIZEN VTF 201



**PLATINE PORTE-OUTILS**

**POCIT160003**

OUTIL CARRÉ / 10 MM  
RÉF. CITIZEN VTF 310



**PLATINE PORTE-BARRE À ALÉSER**

**POCIT160004**

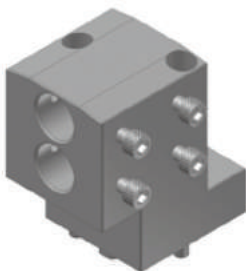
DIAMÈTRE D'ALÉSAGE / Ø 19.05 MM  
RÉF. CITIZEN VDF 501



**PLATINE DOUBLE PORTE-BARRE**

**POCIT160005**

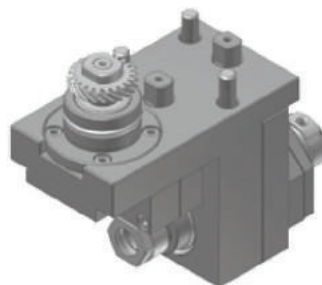
DIAMÈTRE D'ALÉSAGE / Ø 19.05 MM  
RÉF. CITIZEN VDF 401



**PORTE-OUTILS ROTATIF AXIAL**

**POCIT160006**

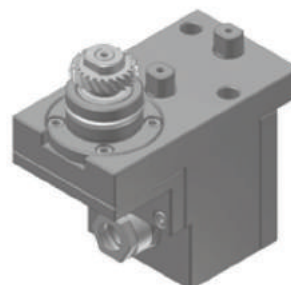
RATIO / 1:1  
VR MAX / 6 000  
PINCE / ER11 A  
RÉF. CITIZEN MST 306



**PORTE-OUTILS ROTATIF AXIAL**

**POCIT160007**

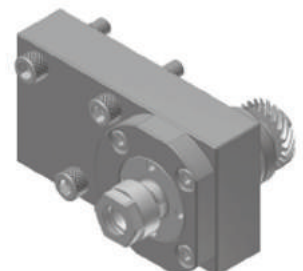
RATIO / 1:1  
VR MAX / 6 000  
PINCE / ER11 A  
RÉF. CITIZEN MSE 106



**PORTE-OUTILS ROT. TRANSVERSAL RADIAL**

**POCIT160008**

RATIO / 1:1  
VR MAX / 6 000  
PINCE / ER11 A  
RÉF. CITIZEN MSC 106



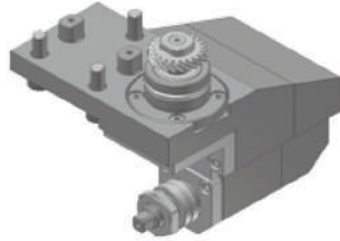
**POCIT160009**

MACHINE : MSC107BT

**APPAREIL À FENDRE**

**POCIT160010**

RATIO / 1:1  
VR MAX / 4 000  
DIAMÈTRE MAX FRAISE / Ø 45 MM  
DIAMÈTRE ARBRE FRAISE / Ø 12.7 MM  
RÉF. CITIZEN MSS 345

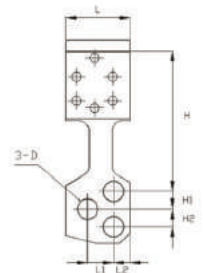
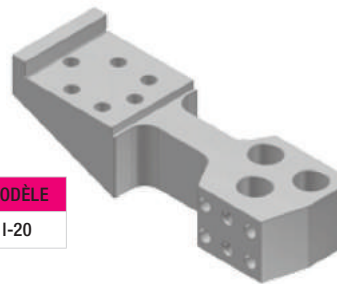


**L16 / L20**  
**PORTE-OUTILS FRONTAUX**

**PORTE-OUTILS FIXE AXIAL 3 POSITIONS**

**POCIT203001**

DIAMÈTRE D'ALÉSAGE / Ø 19.05 MM  
RÉF. CITIZEN GDF 607

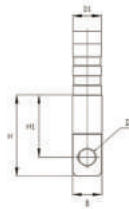
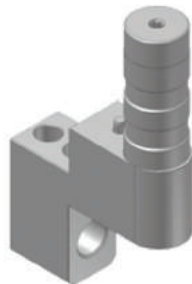


REF.	L	L1	L2	B	H	H1	H2	D	MODÈLE
POCIT203001	62	25	16	40	135	17	17	19.05	I-20

**PORTE-OUTILS FIXE AXIAL**

**POCIT201190 / POCIT201191**

FIXATION PORTE-OUTILS / Ø 32 MM  
DIAMÈTRE D'ALÉSAGE :  
CIT201190 / Ø 19.05 MM  
CIT201191 / Ø 20 MM  
RÉF. CITIZEN GDF 506

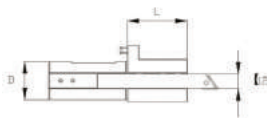
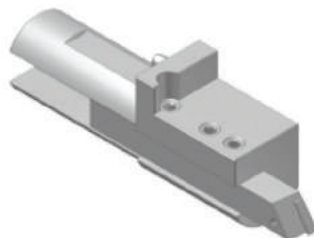


REF.	L	B	H	H1	D	D1	MODÈLE
POCIT201190	40	33	95	73	19.05	32	I-20
POCIT201191	40	33	95	73	20	32	I-20

**PORTE-OUTILS TOURNAGE**

**POCIT2012100**

FIXATION PORTE-OUTILS / Ø 32 MM  
CARRÉ / 12 MM



**PORTE-OUTILS ROTATIF TRANSVERSAL**

**POCIT201001**

RATIO / 1:1  
VR MAX / 8 000  
PINCE / ER16 A  
RÉF. CITIZEN GSC 510



REF.	L	L1	L2	D
POCIT201001	150	40	21.5	21
POCIT201002	139	40	21.5	21

**PORTE-OUTILS ROTATIF AXIAL**

**POCIT461000**

RATIO / 1:1  
VR MAX / 6 000  
PINCE / ER16 M



**PORTE-OUTILS ROTATIF TRIPLE INDEXABLE**

**POCIT491301**

RATIO / 1:1  
VR MAX / 6 000  
PINCE / ER11 A  
ANGLE D'UTILISATION / +- 15°



**PORTE-OUTILS ROTATIF TRIPLE AXIAL**

**POCIT441301**

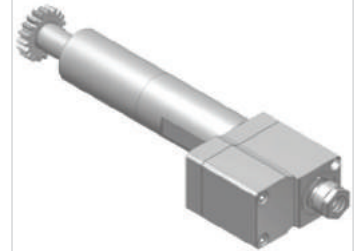
RATIO / 1:1  
VR MAX / 6 000  
PINCE / ER11 M



**PORTE-OUTILS ROTATIF TRANSVERSAL**

**POCIT161101**

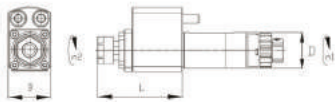
RATIO / 1:3  
VR MAX / 15 000  
PINCE / ER11 A  
RÉF. CITIZEN GSC510-3X



**PORTE-OUTILS ROTATIF AXIAL**

**POCIT111001**

RATIO / 1:1  
VR MAX / 6 000  
PINCE / ER11 A  
RÉF. CITIZEN GSC 907

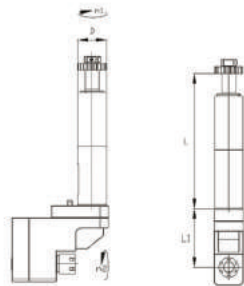


L	B	D
59	30	25

**PORTE-OUTILS ROTATIF AXIAL**

**POCIT411000 / POCIT411001**

RATIO / 1:1  
VR MAX / 6 000  
PINCE / ER11  
RÉF. CITIZEN GSE 107

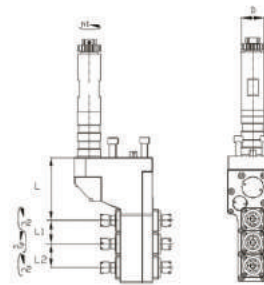
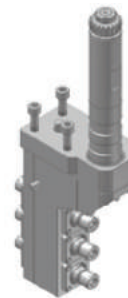


REF.	L	L1	D
POCIT411000	150	75	32
POCIT411001	139	75	32

**PORTE-OUTIL ROTATIF TRIPLE AXIAL**

**POCIT513001**

RATIO / 1:1  
VR MAX / 5 000  
FIXATION PORTE-OUTILS / ER11 M  
RÉF. CITIZEN GSE 1307

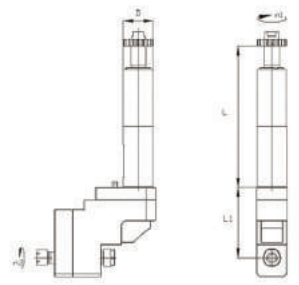


L	L1	L2	D
88.5	33	33	32

**PORTE OUTILS ROTATIF DOUBLE**

**POCIT511001**

RATIO / 1:1  
VR MAX / 6 000  
PINCE AVANT / ER11 A  
PINCE ARRIÈRE / ER11 M



**PORTE-OUTILS ROTATIF TRANSVERSAL**  
**POCIT111001**

RATIO / 1:1  
VR MAX / 6 000  
PINCE / ER 11 A  
RÉF. CITIZEN GSC 907



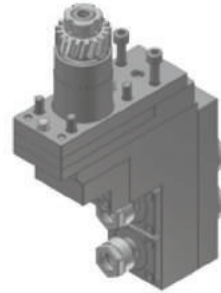
**PORTE-OUTILS ROTATIF TRANSVERSAL**  
**POCIT201001**

RATIO / 1:1  
VR MAX / 6 000  
PINCE / ER 16 A  
RÉF. CITIZEN GSC 510



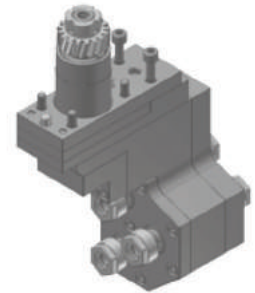
**PORTE-OUTILS ROTATIF DOUBLE AXIAL**  
**POCIT541201**

RATIO / 1:1  
VR MAX / 6 000  
PINCE / ER 11 A  
RÉF. CITIZEN GSE 3107



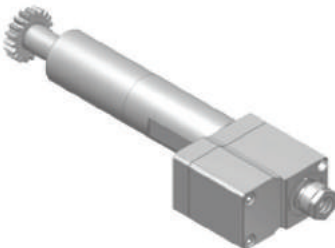
**PORTE-OUTILS ROTATIF TRIPLE AXIAL**  
**POCIT5411301**

RATIO / 1:1  
VR MAX / 6 000  
PINCE / ER11 A  
RÉF. CITIZEN GSE 3207



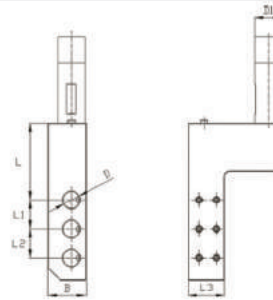
**PORTE-OUTILS ROTATIF TRANSVERSAL**  
**POCIT161101**

RATIO / 1:3  
VR MAX / 15 000  
PINCE / ER11 A  
RÉF. CITIZEN GSC 510-3X



**PORTE-OUTILS FIXE AXIAL 3 POSITIONS**  
**POCIT140301**

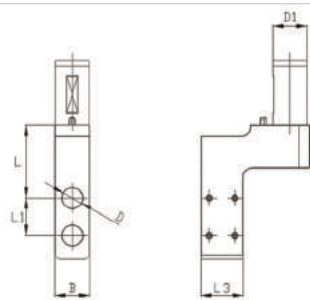
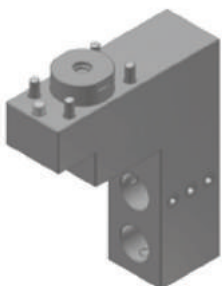
FIXATION PORTE-OUTILS / Ø 25 MM  
DIAMÈTRE D'ALÉSAGE / Ø 19.05 MM  
RÉF. CITIZEN GDF 507



REF.	L	L1	I2	L3	B	D	D1	MODÈLE
POCIT140301	88.5	33.5	33.5	42.5	44	19.05	32	I-20

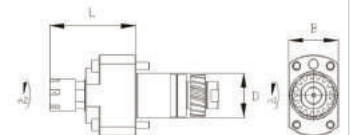
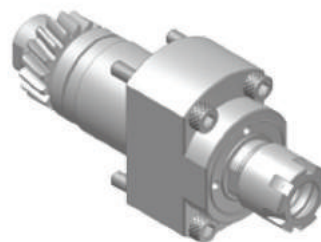
**PORTE-OUTILS FIXE AXIAL 2 POSITIONS**  
**POCIT140201**

FIXATION PORTE-OUTILS / Ø 31 MM  
DIAMÈTRE D'ALÉSAGE / Ø 19.05 MM  
RÉF. CITIZEN GDF 508



**PORTE-OUTILS ROTATIF TRANSVERSAL**  
**POCIT861001**

RATIO / 1:1  
VR MAX / 8 000  
PINCE / ER16 M  
RÉF. CITIZEN GSC 1210

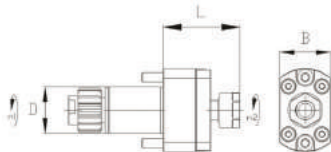
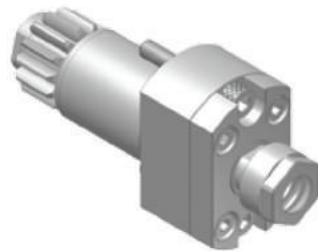


L	B	D
59.5	34.8	31

**PORTE-OUTILS ROTATIF AXIAL**

**POCIT711001**

RATIO / 1:1  
VR MAX / 8 000  
PINCE / ER11 A  
RÉF. CITIZEN GSE 3507

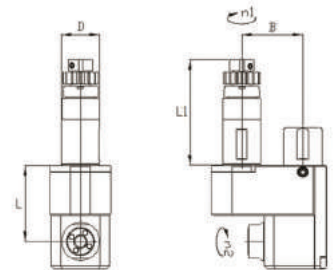
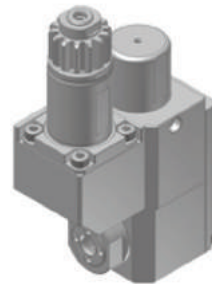


L	B	D
42	28	25

**PORTE-OUTILS ROTATIF AXIAL**

**POCIT761101**

RATIO / 1:1  
VR MAX / 6 000  
PINCE / ER11  
MACHINE L20E  
RÉF. CITIZEN GSS 1330

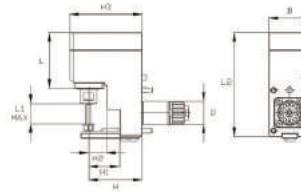
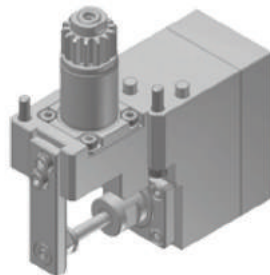


REF.	L	L1	D	B
POCIT761101-E	49.5	51	25	31
POCIT761101	49.5	69.5	25	40

**APPAREIL À FENDRE**

**POCIT731001**

RATIO / 1:1  
VR MAX / 4 000  
DIAMÈTRE MAX FRAISE / Ø 35 MM  
DIAMÈTRE ARBRE FRAISE / Ø 6 MM  
RÉF. CITIZEN GS 1330



L	L1 MAX	L2	D	B	H	H1	H2	H3
61.5	22	115	25	48	59	34	20	80

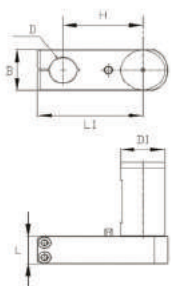
# L20 / L32 AIR TOOL PORTE-OUTILS POUR OUTILS À AIR COMPRIMÉ

**PORTE-OUTILS / OUTILS À AIR COMPRIMÉ**

**POCIT401000**

FIXATION PORTE-OUTILS / Ø 32 MM

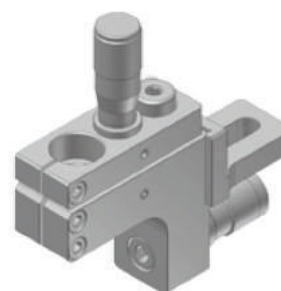
REF.	L	L1	B	H	D	D1	MODÈLE
POCIT401000	22	76.5	32.8	58	19.05	32	L-20
POCIT401001	22	76.5	32.8	58	20	32	L-20



**PORTE-OUTILS / OUTILS À AIR COMPRIMÉ**

**POCIT601001**

FIXATION PORTE-OUTILS / Ø 19.05, 20, 25.4 MM



**PORTE-OUTILS / OUTILS À AIR COMPRIMÉ**

**POCIT4014501**

FIXATION PORTE-OUTILS / Ø 32 MM  
INCLINAISON / 45°  
MACHINE L32



**PORTE-OUTILS MACHINE CITIZEN M32**

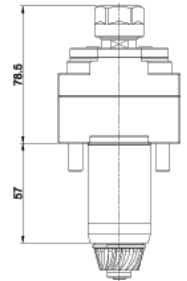
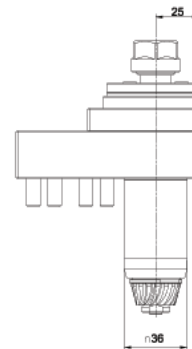
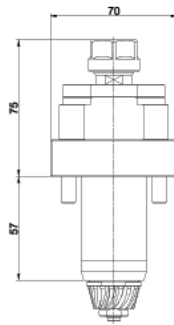
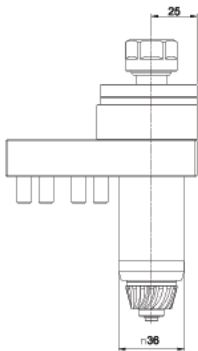
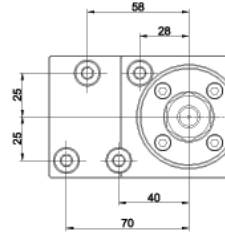
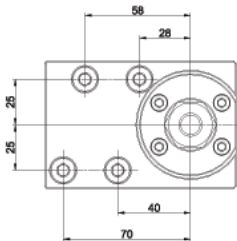
**POCIT3204161100**

RATIO / 1:1

VR MAX / 5 000

PINCE / ER16 A

RÉF. CITIZEN KSC110



**PORTE-OUTILS MACHINE CITIZEN M32**

**POCIT3204161100-1**

RATIO / 1:2

VR MAX / 10 000

PINCE / ER16 A

RÉF. CITIZEN KSC110 (2X)

**PORTE-OUTILS MACHINE CITIZEN M32**

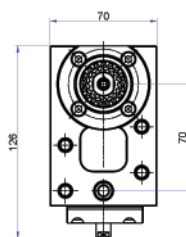
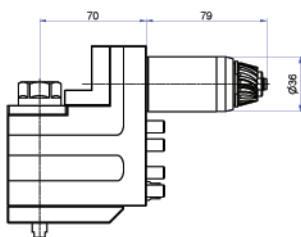
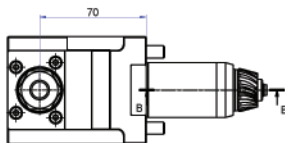
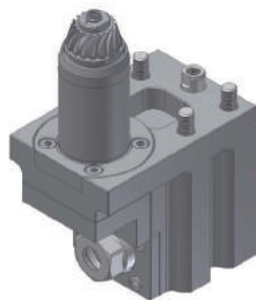
**POCIT3204162100**

RATIO / 1:1

VR MAX / 6 000

PINCE / ER16 A

RÉF. CITIZEN KSE110



**PORTE-OUTILS / OUTILS À AIR COMPRIMÉ**

**POCIT4102201**

FIXATION PORTE-OUTILS / Ø 32MM

INCLINAISON / 45°

ANGLE D'UTILISATION / +- 20°

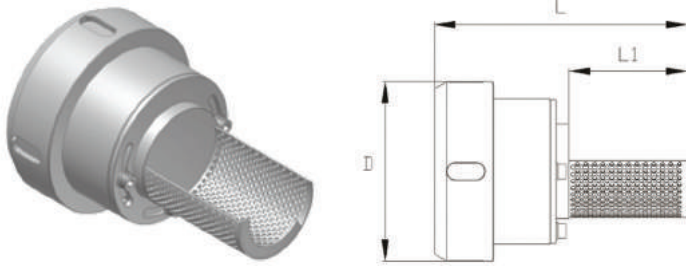


RÉCUPÉRATEUR DE PIÈCES

POCIT90001

MACHINE A32

REF.	L	L1	D	MODÈLE
POCIT90001	119.5	56	84	I-32, A-32

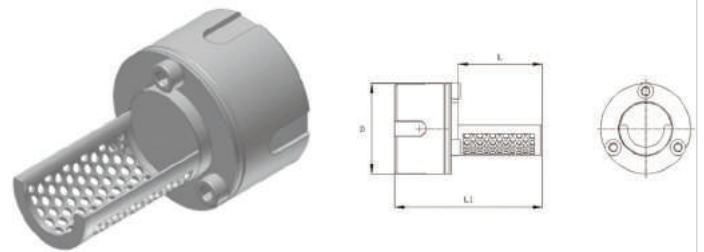


RÉCUPÉRATEUR DE PIÈCES

POCIT90003

MACHINE C16

REF.	L	L1	D	MODÈLE
POCIT90003	45	79	48	C-16, K-16

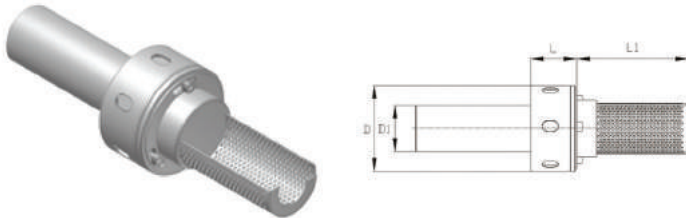


RÉCUPÉRATEUR DE PIÈCES

POCIT90005 / POCIT90006

MACHINE L20

REF.	L	L1	D	D1	MODÈLE
POCIT90005	35	84.5	65	35	L-20, A-20
POCIT90006	35	75.5	65	35	L-20, A-20

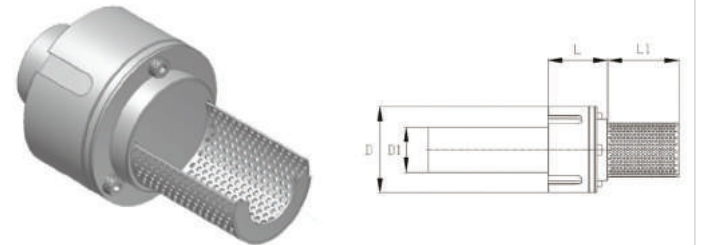


RÉCUPÉRATEUR DE PIÈCES

POCIT90004

MACHINE L20E

REF.	L	L1	D	D1	MODÈLE
POCIT90004	42	40	60	31	L-20E IX



RÉCUPÉRATEUR DE PIÈCES

POCIT90002

MACHINE A20

