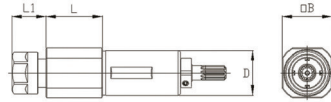
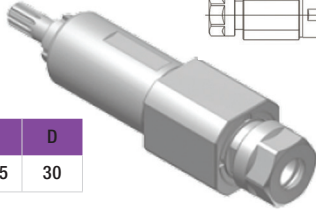


**PORTE-OUTILS ROTATIF AXIAL**

**POHAN246100**

RATIO / 1:1  
VR MAX / 8 000  
PINCE / ER16 A

L	L1	B	D
38	23	33.5	30

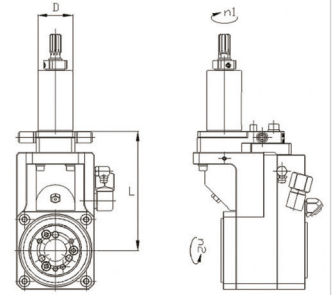
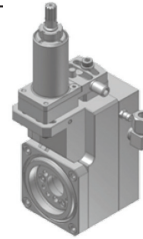


**TOURBILLONNEUR**

**POHAN260100**

RATIO / 1:1  
FILETAGE MAX / M12  
ANGLE HELICE / +- 15°

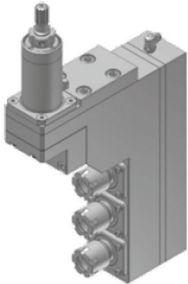
L	D
102	30



**PORTE-OUTILS ROTATIF TRIPLE AXIAL**

**POHAN446300**

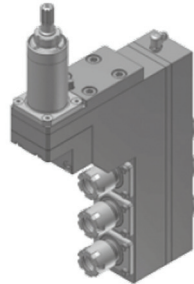
RATIO / 1:1  
VR MAX / 8 000  
FIXATION PORTE-OUTILS / ER16 M



**PORTE-OUTILS ROTATIF TRIPLE DOUBLE**

**POHAN546300**

RATIO / 1:1  
VR MAX / 6 000  
FIXATION OUTILS AVANT / ER16 M  
FIXATION OUTILS ARRIÈRE / ER11 M

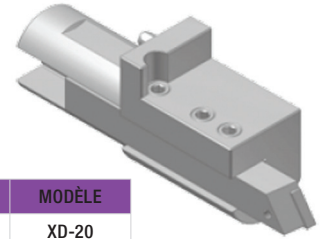


**PORTE-OUTILS TOURNAGE**

**POHAN2012100**

FIXATION PORTE-OUTILS / Ø 30 MM  
CARRÉ / 12 MM

REF.	L	B	D	PINCE	MODÈLE
POHAN2012100	50	32	20	12	XD-20

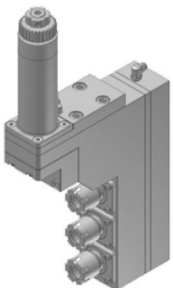


# XD32 / XD35 / XD38 PORTE-OUTILS FRONTAUX

**PORTE-OUTILS ROTATIF TRIPLE**

**POHAN446304**

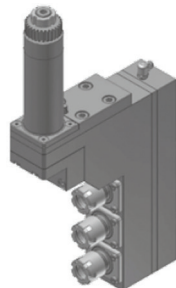
RATIO / 1:1  
VR MAX / 6 000  
FIXATION PORTE-OUTILS / ER16 M



**PORTE-OUTILS ROTATIF TRIPLE DOUBLE**

**POHAN546304**

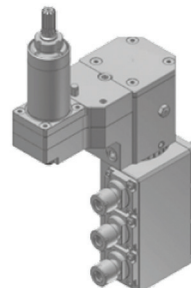
RATIO / 1:1  
VR MAX / 6 000  
PINCE AVANT / ER16 M  
PINCE ARRIÈRE / ER11 M



**PORTE-OUTILS ROTATIF TRIPLE AXIAL**

**POHAN591300**

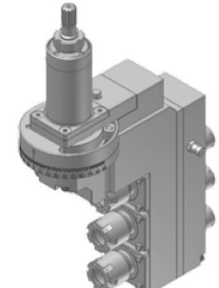
RATIO / 1:1  
VR MAX / 8 000  
FIXATION OUTILS AVANT / ER11 M  
FIXATION OUTILS ARRIÈRE / ER8 M  
ANGLE UTILISATION / +- 180°



**PORTE-OUTILS ROTATIF TRIPLE DOUBLE**

**POHAN596300**

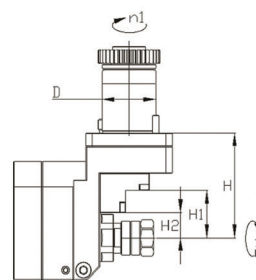
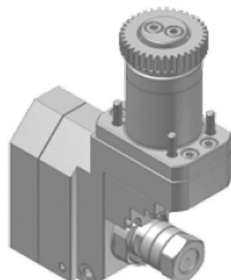
RATIO / 1:1  
VR MAX / 8 000  
PINCE AVANT / ER16 M  
PINCE ARRIÈRE / ER11 M  
ANGLE D'UTILISATION / +- 90°



**APPAREIL À FENDRE**

**POHAN730100**

RATIO / 1:0.55  
VR MAX / 4 000  
DIAMÈTRE FRAISE MAX / Ø 50 MM  
DIAMÈTRE ARBRE FRAISE / Ø 5, 6, 8,  
10, 12.7, 13 MM

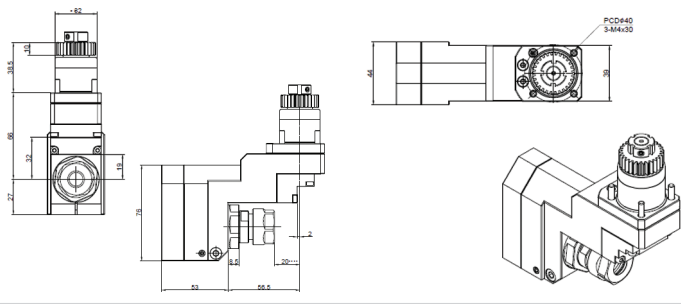


H	H1	H2	D
62	28	15	33

**PORTE-OUTILS MACHINE HANWHA**

**POHAN736100**

RATIO / 1:0.77  
VR MAX / 4 000  
PINCE / ER16 A  
MACHINES : XD32H / XD35H / XD38H

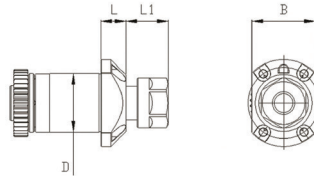
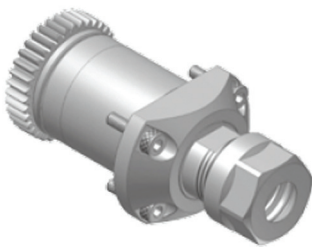


## XD20 / XD26 PORTE-OUTILS REPRISE ARRIÈRE

**PORTE-OUTILS ROTATIF AXIAL**

**POHAN746100**

RATIO / 1:1  
VR MAX / 8 000  
PINCE / ER16 A

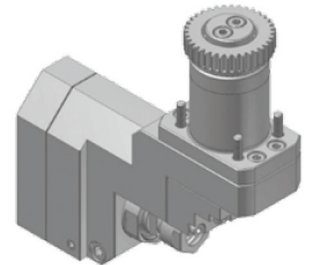


L	L1	B	D
14.1	23.8	35.6	33

**APPAREIL À FENDRE**

**POHAN931100**

RATIO / 1:0.55  
VR MAX / 4 000  
FIXATION PORTE-OUTILS / ER11 A

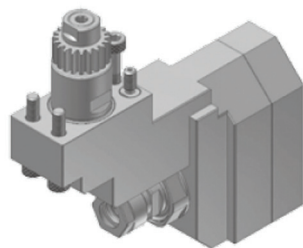


## XD12 PORTE-OUTILS REPRISE ARRIÈRE

**APPAREIL À FENDRE**

**POHAN731100**

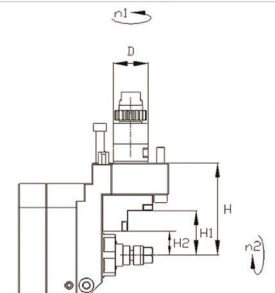
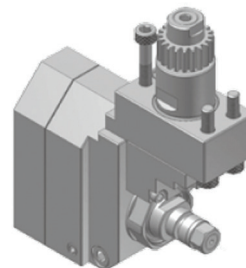
RATIO / 1:0.55  
VR MAX / 4 000  
PINCE / ER11 A



**APPAREIL À FENDRE**

**POHAN731000**

RATIO / 1:0.55  
VR MAX / 4 000  
DIAMÈTRE FRAISE MAX / Ø 50 MM  
DIAMÈTRE ARBRE FRAISE / Ø 5, 6, 8 MM

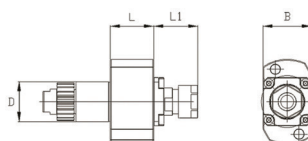
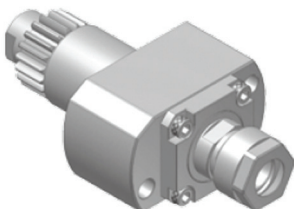


H	H1	H2	D
58	28	15	23

**PORTE-OUTILS ROTATIF AXIAL**

**POHAN741100**

RATIO / 1:1  
VR MAX / 6 000  
PINCE / ER11 A



L	L1	B	D
25	25.6	28	23

PORTE-OUTILS AXIAL

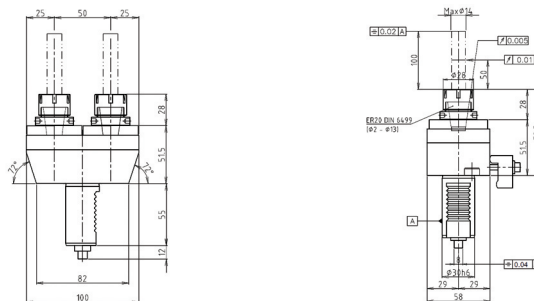
POHAN300100

RATIO / 1:1

VR MAX / 6 000

PINCE / ER20

RÉF. HANWHA 40-3020STL32H



PORTE-OUTILS AXIAL

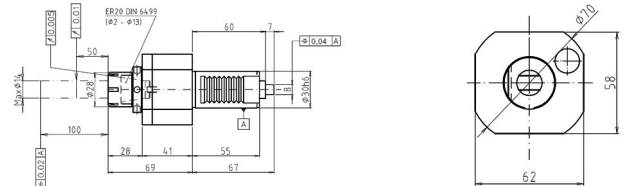
POHAN3002000

RATIO / 1:1

VR MAX / 6 000

PINCE / ER20

RÉF. HANWHA 40-3020STL32H



PORTE-OUTILS AXIAL

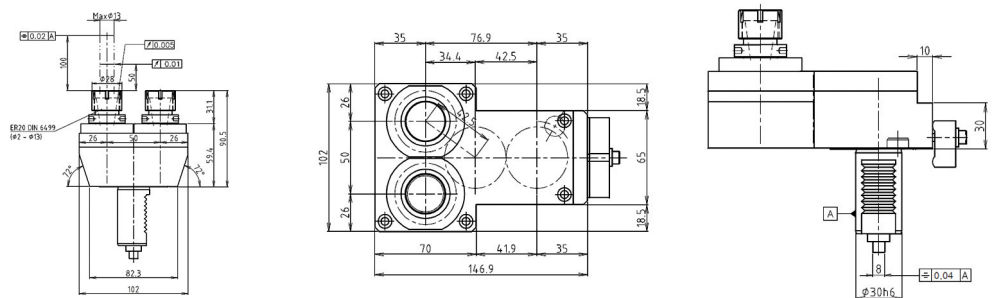
POHAN3003000

RATIO / 1:1

VR MAX / 6 000

PINCE / ER20

RÉF. HANWHA 50-3020STL32H



# PORTE-OUTILS

## RADIAL

PORTE-OUTILS RADIAL

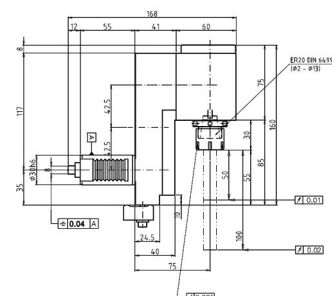
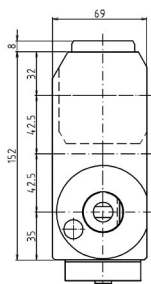
POHAN3004000

RATIO / 1:1

VR MAX / 6 000

PINCE / ER20

RÉF. HANWHA 80-3020LSTL32H



PORTE-OUTILS RADIAL

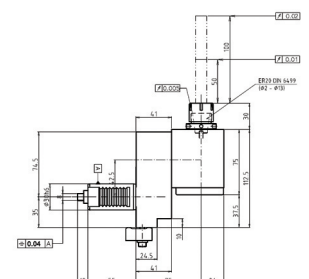
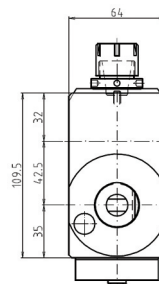
POHAN3005000

RATIO / 1:1

VR MAX / 6 000

PINCE / ER20

RÉF. HANWHA 80-3020STL32H

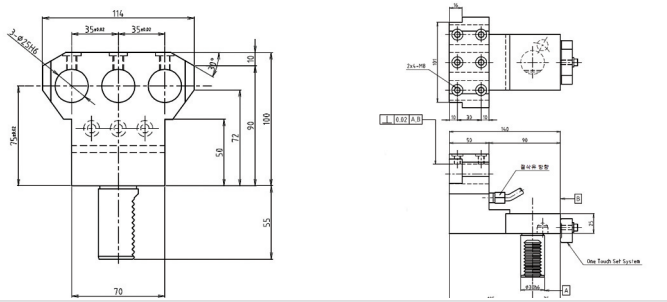


**PORTE-OUTILS FIXE**

**POHAN3006000**

**ORIENTATION BROCHE**

**RÉF. HANWHA 17.3025LXTSTL32H**

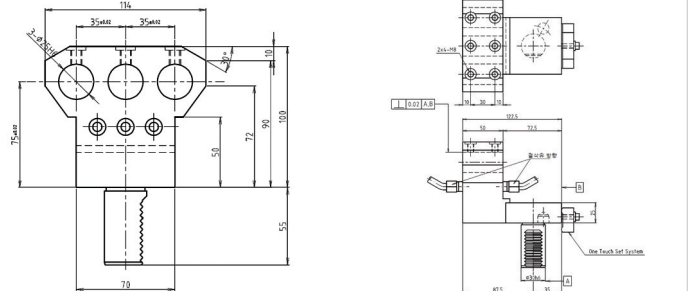


**PORTE-OUTILS FIXE**

**POHAN3007000**

**ORIENTATION BROCHE /  
CONTRE-BROCHE**

**RÉF. HANWHA 17.3025LTSTL32H**



**PORTE-OUTILS FIXE**

**POHAN3008000**

**ORIENTATION CONTRE-BROCHE**

**RÉF. HANWHA 17.3025TSTL32H**

