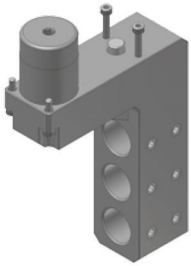


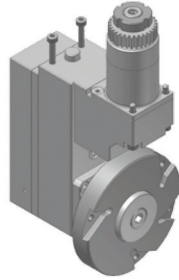
PORTE-OUTILS FIXE AXIAL 3 POSITIONS
POS3400001

FIXATION PORTE-OUTILS / 34 MM
DIAMÈTRE D'ALÉSAGE / Ø 22 MM
RÉF. STAR T3500



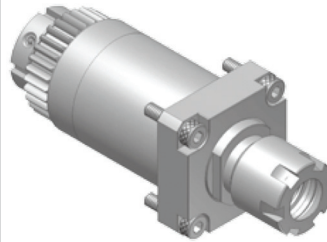
POLYGONNEUR
POS3400015

RATIO / 1:1
VR MAX / 3 000
DIAMÈTRE MAXI FRAISE / Ø 95 MM



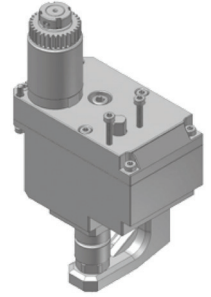
PORTE-OUTILS ROTATIF TRANSVERSAL
POS3400016

RATIO / 1:1
VR MAX / 8 000
PINCE / ER16 M
RÉF. STAR 331/50



APPAREIL À FENDRE
POS3400030

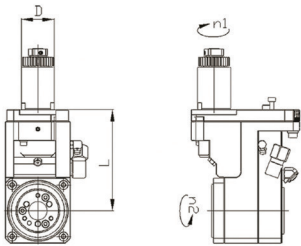
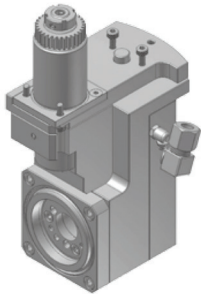
RATIO / 1:0.374
VR MAX / 4 000
DIAMÈTRE MAX FRAISE / Ø 70 MM
DIAMÈTRE ARBRE FRAISE / Ø 12.7 MM



L	L1	L2	D
105.5	71	29	34

TOURBILLONNEUR
POS3400026

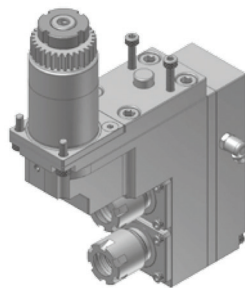
RATIO / 1:1
VR MAX / 6 000
CAP. MAXI FILETAGE / M12
ANGLE HÉLICE / +20°



L	D
104	34

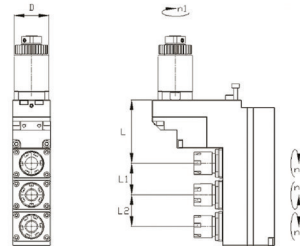
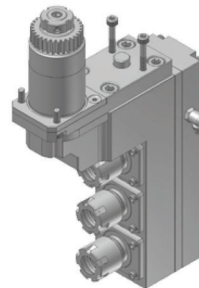
PORTE-OUTILS ROTATIF DOUBLE AXIAL
POS3400017

RATIO / 1:1
VR MAX / 6 000
PINCE / ER16 M
RÉF. STAR 541-51



PORTE-OUTILS ROTATIF TRIPLE AXIAL
POS3400031

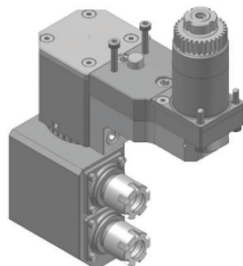
RATIO / 1:1
VR MAX / 6 000
PINCE / ER16 M
RÉF. STAR 661-51



REF.	L	L1	L2	D
SR20R	62	31	31	34
SR32J	65	34	34	34

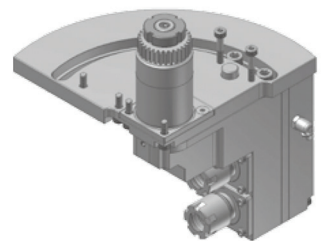
PORTE-OUTILS ROT. DOUBLE INDEXABLE
POS3400019

RATIO / 1:1
VR MAX / 6 000
PINCE / ER16 M
ANGLE D'UTILISATION / +-180°



PORTE-OUTILS ROT. DOUBLE INDEXABLE
POS3400018

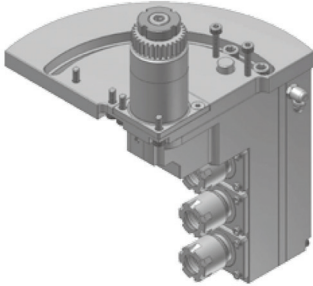
RATIO / 1:1
VR MAX / 6 000
PINCE / ER16 M
ANGLE D'UTILISATION / 0-90°



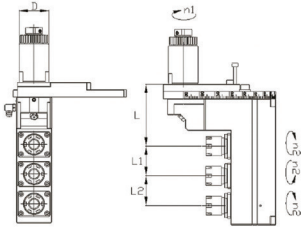
PORTE-OUTILS ROT. TRIPLE INDEXABLE

POS3400020

RATIO / 1:1
VR MAX / 6 000
PINCE / ER16 M
ANGLE D'UTILISATION / 0-90°



Angular adjustable range : 0-90°

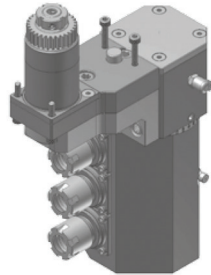


REF.	L	L1	L2	D
POS3400020-20R	62	31	31	34
POS3400020-32J	65	34	34	34

PORTE-OUTILS ROT. TRIPLE INDEXABLE

POS3400021

RATIO / 1:1
VR MAX / 6 000
PINCE / ER16 M
ANGLE D'UTILISATION / +-180°



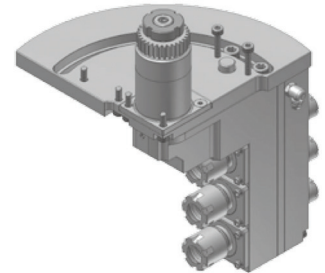
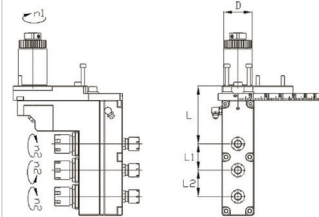
PORTE-OUTILS ROT. TRIPLE INDEXABLE

POS3459630

RATIO / 1:1
VR MAX / 6 000
PINCE / ER16 M
ANGLE D'UTILISATION / 0-90°
MACHINE : SR20 R

REF.	L	L1	L2	D
POS3459630	62	31	31	34

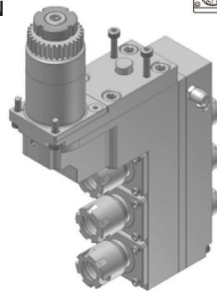
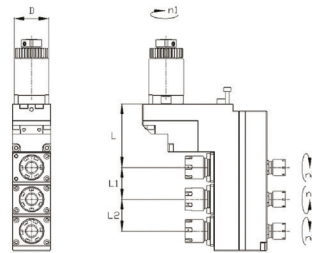
Angular adjustable range : 0-90°



PORTE-OUTILS ROTATIF TRIPLE DOUBLE

POS3400013-20R / POS3400014-32J

RATIO / 1:1
VR MAX / 6 000
PINCE AVANT / ER16 M
PINCE ARRIÈRE / ER11 M
RÉF. STAR 671-59
MACHINE : SR32J / JN

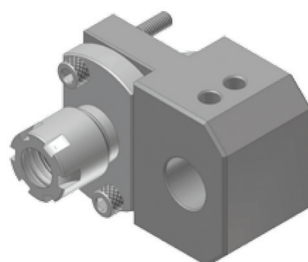


PORTE-OUTILS REPRISE ARRIÈRE
QUEUE Ø 16 / Ø 22 MM

ADAPTATION PORTE-OUTILS ROT. + 1 FIXE

POS160001

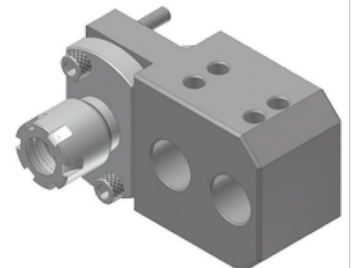
FIXATION PORTE-OUTILS / Ø 22 MM
PINCE / ER16 M
ALÈSAGE / Ø 16 MM
MACHINE SR 20 J



ADAPTATION PORTE-OUTILS ROT. + 2 FIXES

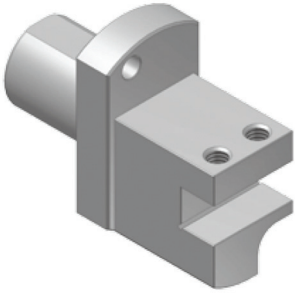
POS160002

FIXATION PORTE-OUTILS / Ø 22 MM
PINCE / ER16 M
ALÈSAGE / Ø 16 MM
MACHINE SR 20 J



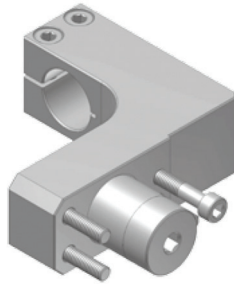
PORTE-OUTILS DE TOURNAGE ARRIÈRE
POS2200010

FIXATION PORTE-OUTILS / Ø 22 MM
CARRÉ / 10 MM



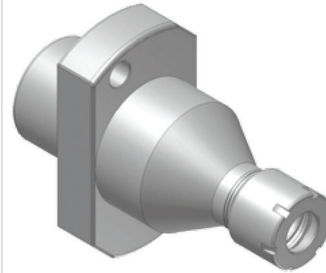
OUTIL PNEUMATIQUE
POS2200011

FIXATION PORTE-OUTILS / Ø 22 MM



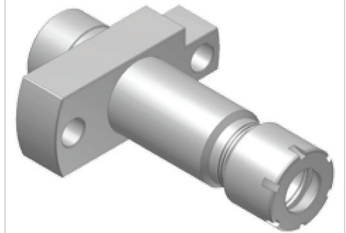
PORTE-PINCE
POS2200012

FIXATION PORTE-OUTILS / Ø 22 MM
PINCE / ER11 M



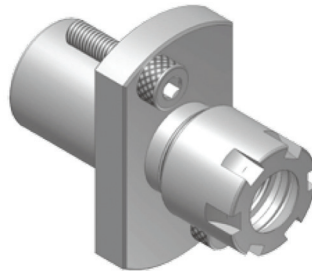
PORTE-PINCE
POS1600013

FIXATION PORTE-OUTILS / Ø 16 MM
PINCE / ER11 M
MACHINE SR 10 J



PORTE-PINCE
POS2200014

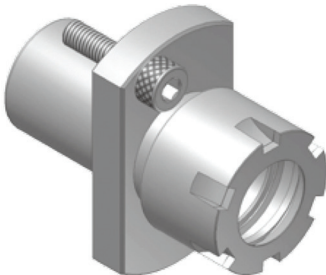
FIXATION PORTE-OUTILS / Ø 22 MM
PINCE / ER16 M



PORTE-OUTILS REPRISE ARRIÈRE
QUEUE Ø 22 MM

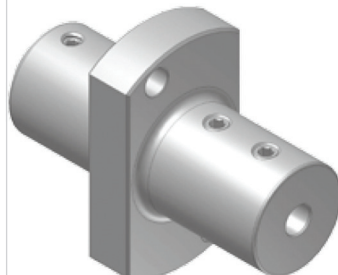
PORTE-PINCE
POS2200015

FIXATION PORTE-OUTILS / Ø 22 MM
PINCE / ER20 M



PORTE-BARRE D'ALÉSAGE
POS2200016

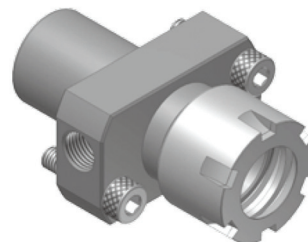
FIXATION PORTE-OUTILS / Ø 22 MM
OUTIL / Ø 3, 4, 5, 6, 8, 10, 12, 16 MM



PORTE-PINCE (ARROSAGE CENTRE PINCE)
POS2200017

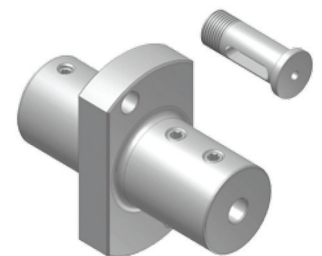
FIXATION PORTE-OUTILS / Ø 22 MM
PINCE / ER20 M

POS2200018
PINCE / ER16 M



PORTE-BARRE D'ALÉSAGE
POS2200019

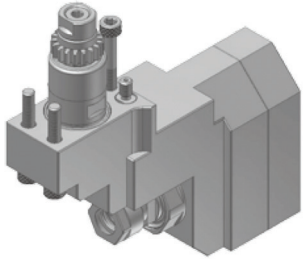
FIXATION PORTE-OUTILS / Ø 22 MM
DOUILLE DIAMÈTRE D'ALÉSAGE 12 MM
DOUILLE Ø 3, 4, 5, 6, 8, 9, 10 MM



APPAREIL À FENDRE

POS2200020

RATIO / 1:0.55
VR MAX / 4 000
PINCE / ER11 A

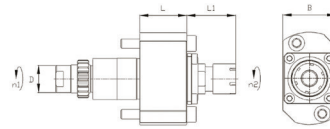
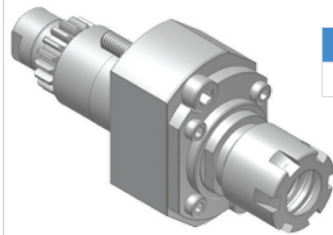


H	H1	H2	D
15	29.5	58	22

PORTE-OUTILS ROTATIF AXIAL

POS2200021

RATIO / 1:1
VR MAX / 6 000
PINCE / ER16 M
RÉF. STAR 571-61

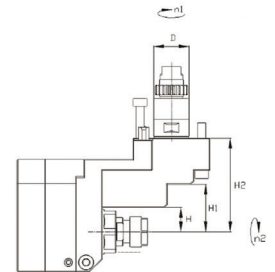
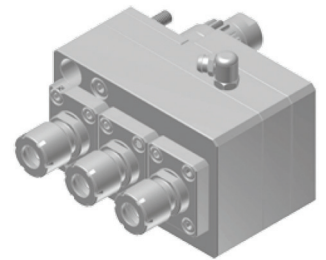


REF.	L	L1	L2	D
POS2200021	20	32	31.5	22

PORTE-OUTILS ROTATIF TRIPLE AXIAL

POS2200022

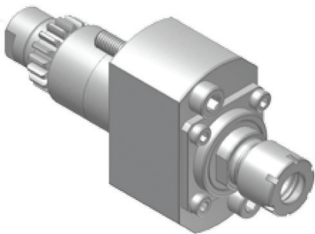
RATIO / 1:1
VR MAX / 8 000
PINCE / ER11 M
MACHINE SR20RIII NOUVELLE VERSION
SR20 J (VERSION FANUC 31 I)



PORTE-OUTILS ROTATIF AXIAL

POS2200025

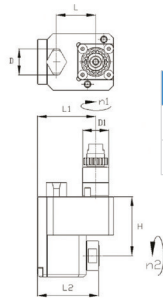
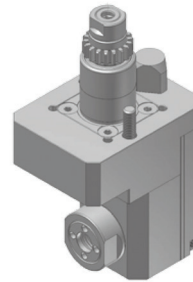
RATIO / 1:1
VR MAX / 6 000
PINCE / ER11 M
RÉF. STAR 541-61



PORTE-OUTIL ROTATIF RADIAL

POS2200026 / POS2200027

RATIO / 1:1
VR MAX / 6 000
PINCE / ER11

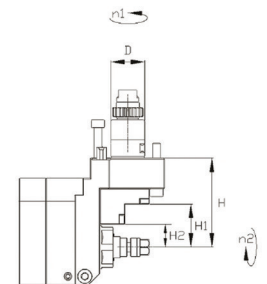
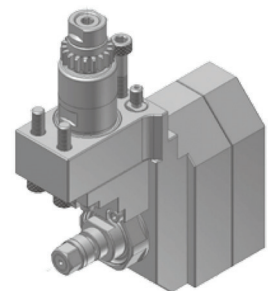


REF.	L	L1	L2	H	D	D1
POS2200026	23	31	43.9	57.5	16	22
POS2200027	33	49	51.4	49.5	22	22

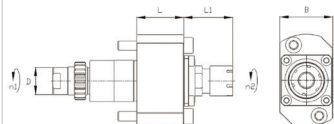
APPAREIL À FENDRE

POS2200023

RATIO / 1:0.55
VR MAX / 4 000
DIAMÈTRE MAX FRAISE / Ø 50 MM
DIAMÈTRE ARBRE FRAISE / Ø 5, 6, 8, 12.7, 13 MM



H	H1	H2	D
58	28	15	22



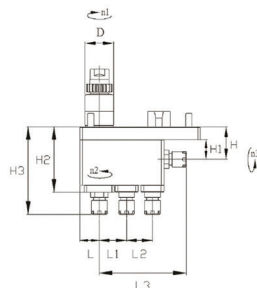
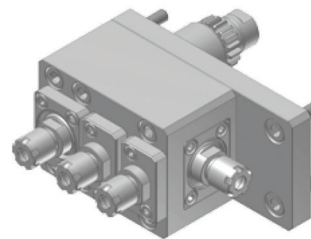
REF.	L	L1	L2	D
POS2200025	25	26	28	22

PORTE-OUTIL ROT. TRIPLE AXIAL

+ 1 TRANSVERSAL

POS2200024

RATIO / 1:1
VR MAX / 6 000
PINCE / ER 8 M
MACHINE SR10 J

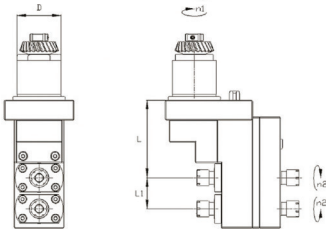
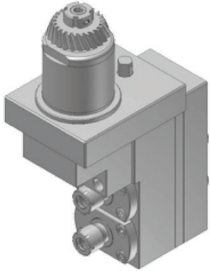


L	L1	L2	L3	H	H1	H2	H3	D
15	21	20	67	25	15	50.5	67.5	22

PORTE-OUTILS ROTATIF DOUBLE AXIAL
POS4400033

RATIO / 1:1.16
VR MAX / 6 000
PINCE / ER11 M
RÉF. STAR 421-59
MACHINE : SV32 / ECAST 32 T

L	L1	D
77	31	44

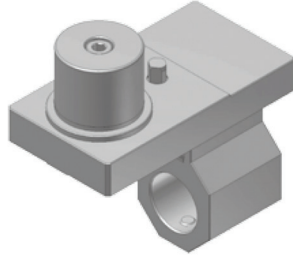


POS4400034

MACHINE : SV12 / SV20 / SV32J11 /
ECAST20 T

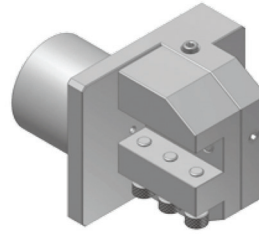
PORTE-DOUILLE
POS4400031

FIXATION PORTE-OUTILS / Ø 44 MM
FIXATION BARRE D'ALÉSAGE / Ø 32 MM



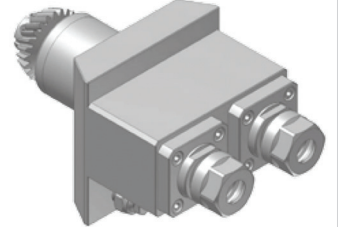
PORTE-OUTILS RADIAL
POS4400032

FIXATION PORTE-OUTILS / Ø 44 MM
CARRÉ / 16 MM
AJUSTEMENT AU CENTRE / +- 1 MM



PORTE-OUTILS ROTATIF DOUBLE RADIAL
POS4400030

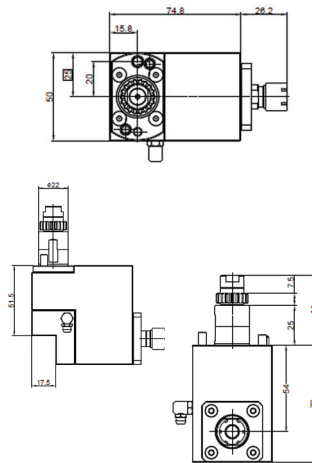
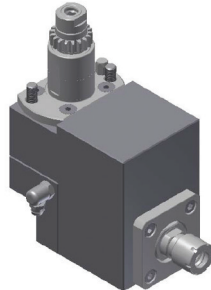
RATIO / 1:1
VR MAX / 6 000
PINCE / ER16 A
RÉF. STAR 421-51
MACHINE : SV32 ECAST 32T



PORTE-OUTILS POUR MACHINE STAR

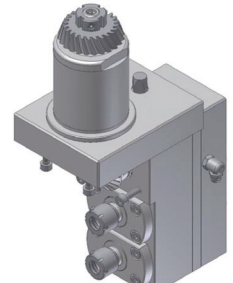
PORTE-OUTILS MACHINE STAR
POS2000028

RATIO / 1:1
VR MAX / 8 000
PINCE / ER11 M
MACHINE : SR20 J / SB20 R



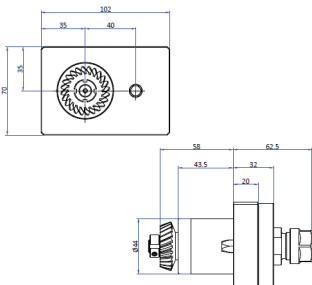
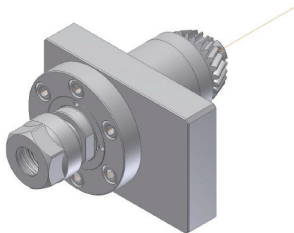
PORTE-OUTILS MACHINE STAR
POS4400034

RATIO / 1:1.16
VR MAX / 6 000
PINCE / ER11 M
RÉF. STAR 431-59
MACHINE : SV32 / ECAST 32 T



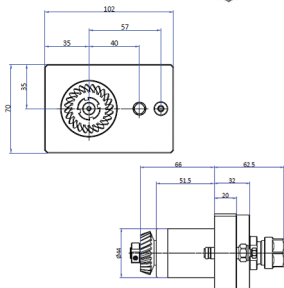
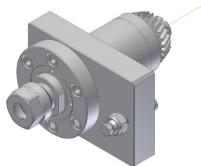
PORTE-OUTILS MACHINE STAR
POS3200029

RATIO / 1:1
VR MAX / 6 000
PINCE / ER16 A
RÉF. STAR 221-50
MACHINE : SV12 / SV20 / SV32J /
SV32JII / ECAS20T



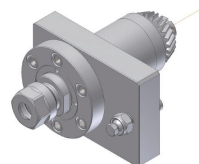
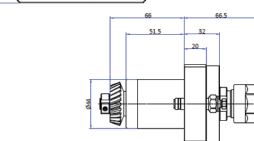
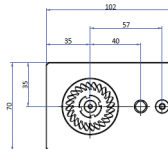
PORTE-OUTILS MACHINE STAR
POS3200035

RATIO / 1:1
VR MAX / 6 000
PINCE / ER16 A
RÉF. STAR 201-50
MACHINE : SV32 / ECAS32T / ST38



PORTE-OUTILS MACHINE STAR
POS3200036

RATIO / 1:1
VR MAX / 6 000
PINCE / ER20 A
MACHINE : SV32 / ECAS32T / ST38



PORTE-OUTILS MACHINE STAR
POS3200036

