

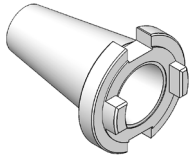
# INDICE DELL' ATTACCO ISO - DIN 2080

INDEX OF NT - DIN 2080 SHANK

## RIDUZIONI PASSANTI

### DA ISO A ISO

THROUGH ISO TO ISO ADAPTERS



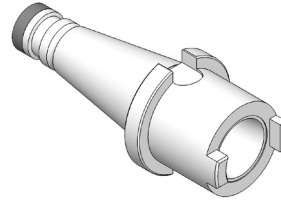
Programma completo a pag.

**73**

## RIDUZIONI DA ISO

### A ISO/TC/BT

ISO TO ISO/TC/BT ADAPTERS

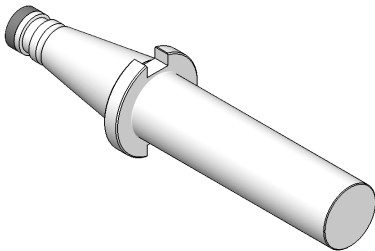


Programma completo a pag.

**73**

## BARRE A STELO TENERO

BLANK BARS

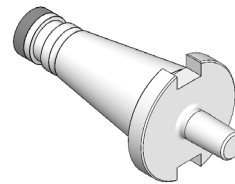


Programma completo a pag.

**73**

## ATTACCHI PER MANDRINI PORTAPUNTA DIN 238

SHANKS FOR DRILL CHUCKS DIN 238 TYPE

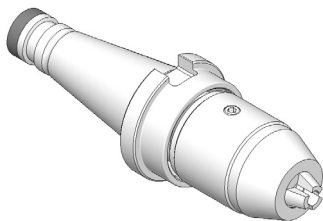


Programma completo a pag.

**74**

## AUTOSERRANTI INTEGRALI

MONOLITHIC DRILL CHUCKS

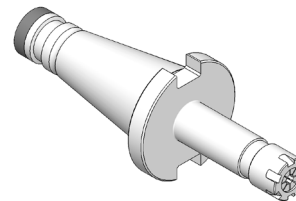


Programma completo a pag.

**74**

## PORTAPINZA ER CON GHIERA MINI

ER-DIN 6499 COLLET CHUCKS  
WITH MINI NUT

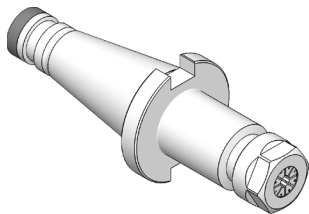


Programma completo a pag.

**75**

## PORTAPINZA ER CON GHIERA ESAGONALE

ER-DIN 6499 COLLET CHUCKS  
WITH HEXAGONAL NUT

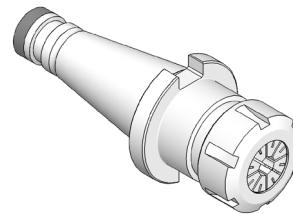


Programma completo a pag.

**75**

## PORTAPINZA ER CON GHIERA STANDARD

ER-DIN 6499 COLLET CHUCKS  
WITH STANDARD NUT

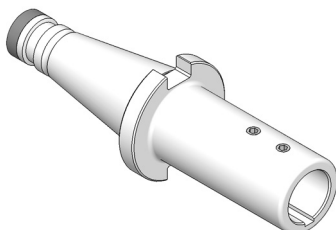


Programma completo da pag.

**76**

## PORTA MANDRINI CON ATTACCO TRAPEZIO DIN 6327

AUTOMOTIVES SHANK HOLDERS  
ACCORDING TO DIN 6327

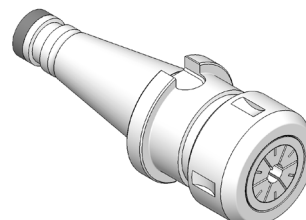


Programma completo a pag.

**78**

## MANDRINI PER PINZE EOC DIN 6388

DIN 6388 COLLET CHUCKS



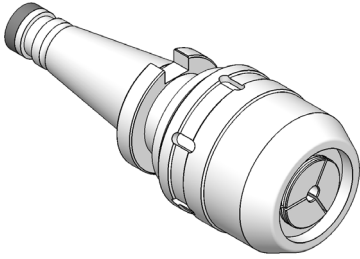
Programma completo a pag.

**78**

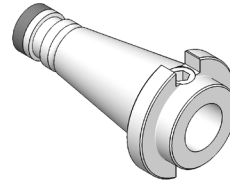
# INDICE DELL' ATTACCO ISO - DIN 2080

INDEX OF NT - DIN 2080 SHANK

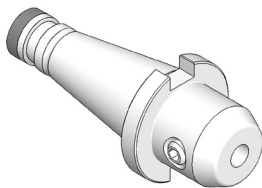
**MANDRINI  
A FORTE SERRAGGIO**  
HIGH GRIP CHUCKS



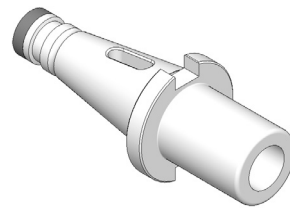
**PORTAFRESE WELDON  
TIPO EXTRACORTO**  
SHORT TYPE END MILL HOLDERS  
FOR DIN 1835-B SHANKS



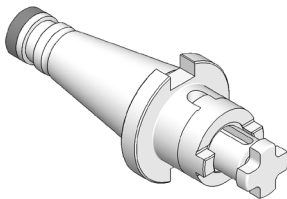
**PORTAFRESE WELDON**  
END MILL HOLDERS  
FOR DIN 1835-B SHANKS



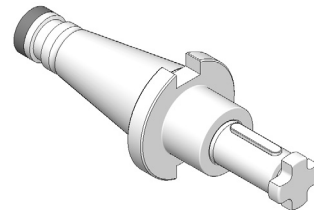
**RIDUZIONI  
A CONO MORSE**  
ADAPTERS TO MORSE TAPER



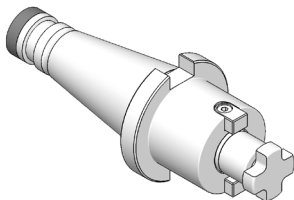
**PORTAFRESE  
COMBINATI**  
DIN 6358 SHELL END  
MILL HOLDERS



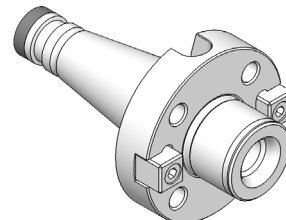
**PORTAFRESE CON CHIAVETTA  
DI TRASCINAMENTO**  
MILLING CUTTER HOLDERS  
WITH FEATHER KEY



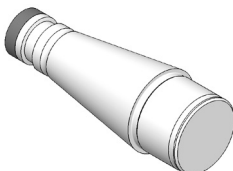
**PORTAFRESE  
FISSI**  
DIN 6357  
FACE MILL HOLDERS



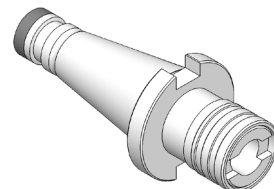
**ATTACCHI PER FRESE  
AD INSERTI**  
FACE MILL HOLDERS FOR  
FACE MILLING CUTTERS



**CENTRATORI PER FRESE  
AD INSERTI**  
CENTERINGS FOR  
FACE MILLING CUTTERS

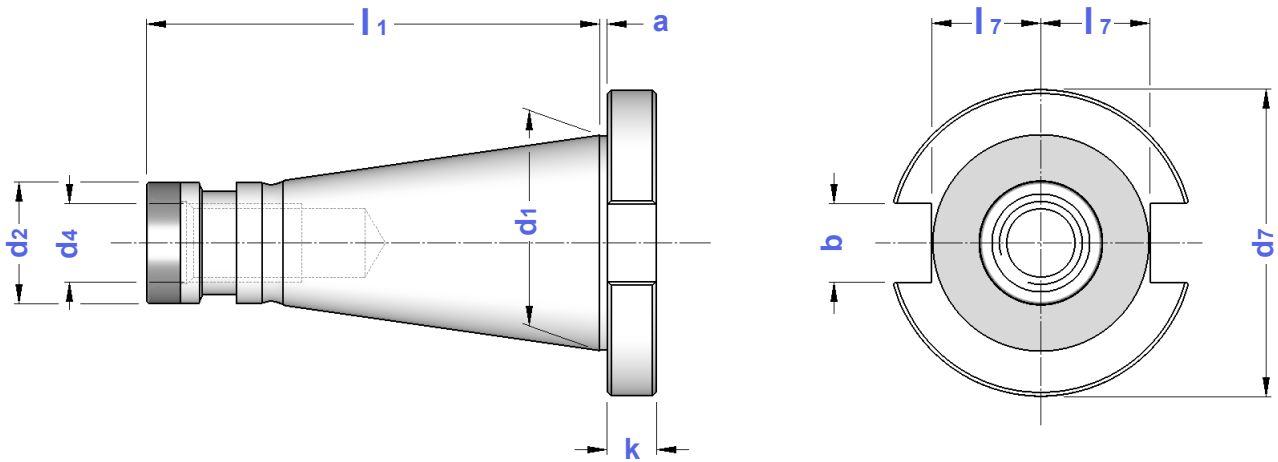


**MASCHIATORI  
A CAMBIO RAPIDO**  
QUICK CHANGE TAP HOLDERS



# CARATTERISTICHE TECNICHE CONI ISO DIN 2080

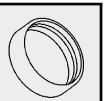
ISO DIN 2080 TAPERS STANDARD FEATURES



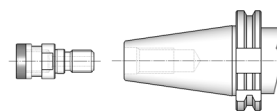
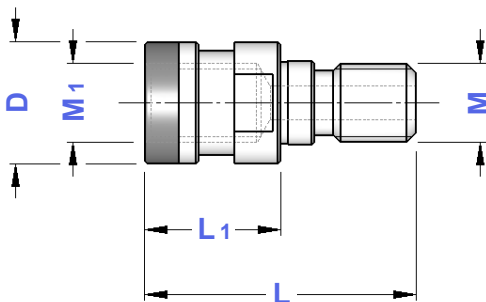
CONO	a	b	d1	d2	d4	d7	k	l1	l7	PRECISIONE
ISO 30 - DIN 2080	1,6	16,1	31,75	17,4	M 12	50,0	8	68,4	16,2	
ISO 40 - DIN 2080	1,6	16,1	44,45	25,3	M 16	63,0	10	93,4	22,5	
ISO 50 - DIN 2080	3,2	25,7	69,85	39,6	M 24	97,5	12	126,8	35,3	

## CODOLI ADATTATORI - OTT SYSTEM

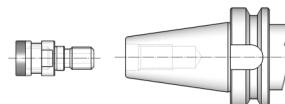
OTT SYSTEM - ADAPTER STUD BOLTS



TIPO	Art.	M	M1	D	L1	
OTT M16/L 53 - TC 40	<b>3487</b>	M16	M16	25,3	25	7461
OTT M16/L 56 - BT 40	<b>3466</b>	M16	M16	25,3	28	7461
OTT M24/L 65 - CONO 50	<b>0087</b>	M24	M24	39,6	25	—



DIN 69871 → DIN 2080

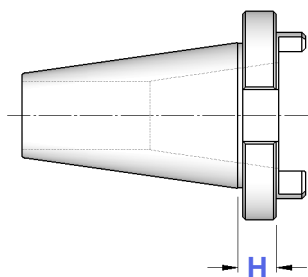


BT → DIN 2080

**DIN  
2080**


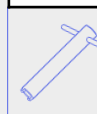
**RIDUZIONI PASSANTI DA ISO A ISO**  
PASSER-BY ISO TO ISO ADAPTERS

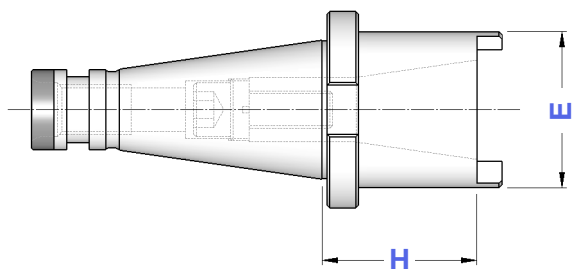
TIPO	Art.	H
ISO 40 - IP 30	<b>8828</b>	12
ISO 50 - IP 40	<b>8829</b>	16



**DIN  
2080**

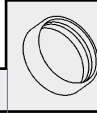
**RIDUZIONI DA ISO A ISO/TC/BT**  
ISO TO ISO/TC/BT ADAPTERS

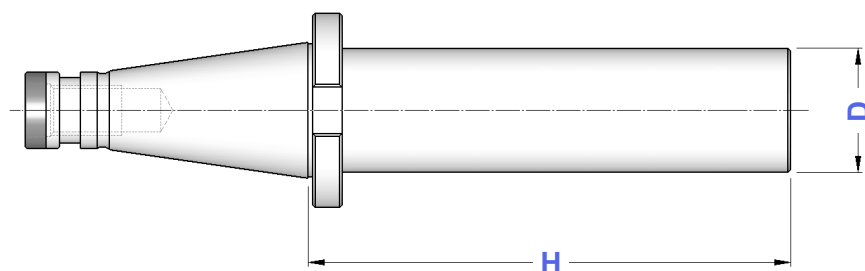
TIPO	Art.	H	E		DIN 2080	BT DIN 69871	
ISO 40 - ISO 30/TC 30/BT 30	<b>4235</b>	50	50	7423	7410	0177	4570
ISO 50 - ISO 40/TC 40/BT 40	<b>4237</b>	63	68	7424	7411	0179	4571
ISO 50 - ISO 50/TC 50/BT 50	<b>8536</b>	100	100	7426	7417	0254	4780

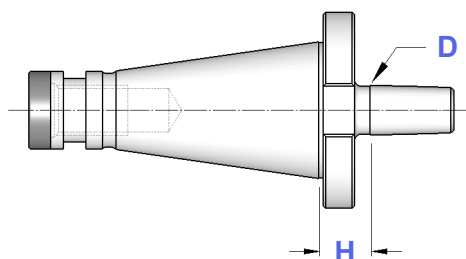


**DIN  
2080**

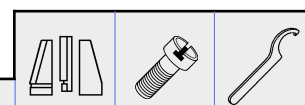
**BARRE A STELO TENERO**  
BLANK BARS

TIPO	Art.	
ISO 40 - D. 40/H 160	<b>4374</b>	7461
ISO 40 - D. 50/H 250	<b>4377</b>	7461
ISO 40 - D. 63/H 160	<b>4378</b>	7461
ISO 40 - D. 63/H 250	<b>4379</b>	7461
ISO 50 - D. 50/H 300	<b>4383</b>	7462
ISO 50 - D. 63/H 300	<b>4385</b>	7462
ISO 50 - D. 80/H 300	<b>4387</b>	7462

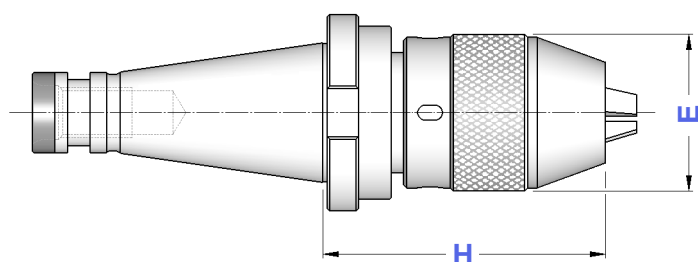


**DIN  
2080****ATTACCHI PER MANDRINI PORTAPUNTA DIN 238**  
SHANKS FOR DRILL CHUCKS DIN 238 TYPE

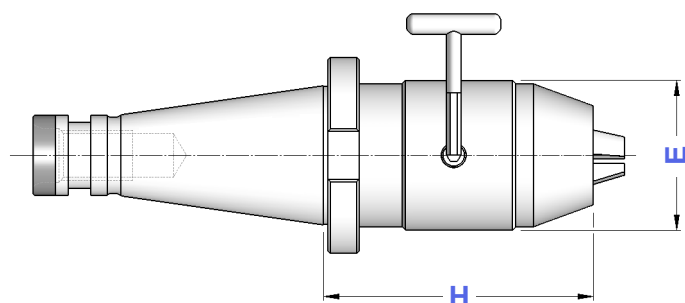
TIPO	Art.	D	H	
ISO 30 - B12	<b>3858</b>	12,065	15	—
ISO 30 - B16	<b>3991</b>	15,733	15	—
ISO 40 - B12	<b>3859</b>	12,065	17	7461
ISO 40 - B16	<b>3860</b>	15,733	17	7461
ISO 40 - B18	<b>3861</b>	17,780	17	7461
ISO 50 - B16	<b>3992</b>	15,733	20	7462
ISO 50 - B18	<b>3993</b>	17,780	20	7462

**DIN  
2080****MANDRINI AUTOSERRANTI INTEGRALI**  
**ROTAZIONE DESTRA**  
MONOLITHIC DRILL CHUCKS - RIGHT SPIN

TIPO	Art.	CAPACITA'	E	H			
ISO 30 - DC 13	<b>8578</b>	1 ÷ 13	50	100	9016	9021	2370
ISO 40 - DC 13	<b>4331</b>	1 ÷ 13	50	95	9016	9021	2370
ISO 40 - DC 16	<b>4332</b>	3 ÷ 16	57	105	9017	9023	2371
ISO 50 - DC 13	<b>4333</b>	1 ÷ 13	50	80	9016	9021	2370
ISO 50 - DC 16	<b>4334</b>	3 ÷ 16	57	100	9017	9023	2371

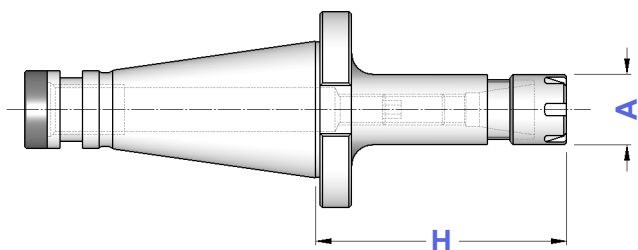
Precisione di rotazione: **0,05 mm**  
Runout accuracy: **0,05 mm****DIN  
2080****MANDRINI AUTOSERRANTI INTEGRALI**  
**ROTAZIONE DESTRA E SINISTRA**  
MONOLITHIC DRILL CHUCKS - RIGHT & LEFT SPIN

TIPO	Art.	CAPACITA'	E	H	
ISO 40 - DCU 13	<b>8579</b>	1 ÷ 13	50	90	2372
ISO 40 - DCU 16	<b>8580</b>	3 ÷ 16	57	100	
ISO 50 - DCU 13	<b>8581</b>	1 ÷ 13	50	87	2372
ISO 50 - DCU 16	<b>8582</b>	3 ÷ 16	57	100	

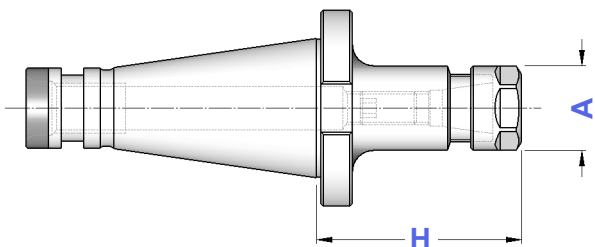
Precisione di rotazione: **0,05 mm**  
Runout accuracy: **0,05 mm**

**DIN  
2080****PORTAPINZE ER - GHIERA MINI**  
ER - DIN 6499 COLLET CHUCKS WITH MINI NUT

TIPO	Art.	H	A	CAPACITA'				
ISO 30 - ER16 GM	<b>2957</b>	70	22	1 ÷ 10	0183	1229	5719	0364
ISO 40 - ER16 GM	<b>2959</b>	80	22	1 ÷ 10	0186	1229	5719	0364
ISO 40 - ER20 GM	<b>2960</b>	90	28	1 ÷ 13	0188	1230	5720	0787
ISO 40 - ER25 GM	<b>2961</b>	100	35	1 ÷ 16	0190	1231	5721	0996

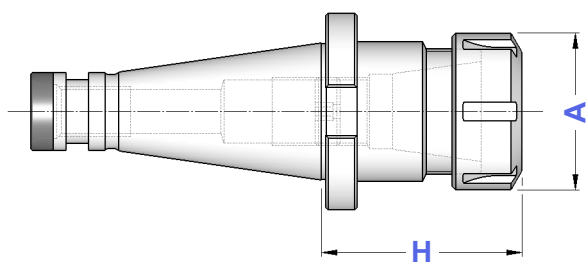
**DIN  
2080****PORTAPINZE ER - GHIERA ESAGONALE**  
ER - DIN 6499 COLLET CHUCKS WITH HEXAGONAL NUT

TIPO	Art.	A	CAPACITA'				
ISO 30 - ER16 GE/H 50	<b>8332</b>	28	1 ÷ 10	0183	1214	2906	0364
ISO 30 - ER20 GE/H 50	<b>8333</b>	34	1 ÷ 13	0183	1215	2907	0787
ISO 40 - ER16 GE/H 50	<b>8334</b>	28	1 ÷ 10	0186	1214	2906	0364
ISO 40 - ER16 GE/H100	<b>8335</b>						
ISO 40 - ER20 GE/H 50	<b>8336</b>	34	1 ÷ 13	0188	1215	2907	0787
ISO 40 - ER20 GE/H100	<b>8337</b>						



**DIN  
2080****PORTAPINZE ER - GHIERA STANDARD**  
ER - DIN 6499 COLLET CHUCKS WITH STANDARD NUT

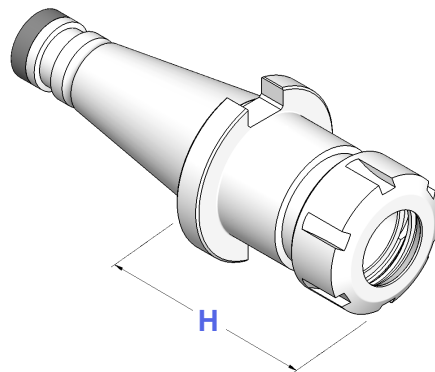
TIPO	Art.	A	CAPACITA'				
ISO 30 - ER 16/H 50	<b>2944</b>	32	1 ÷ 10	0183	4993	3698	0364
ISO 30 - ER 20/H 50	<b>2945</b>	35	1 ÷ 13	0183	4994	3699	0787
ISO 30 - ER 25/H 40	<b>2927</b>	42	1 ÷ 16	0190	4995	3669	0996
ISO 30 - ER 25/H 75	<b>2946</b>						
ISO 30 - ER 32/H 50	<b>2928</b>	50	2 ÷ 20	0191	4996	3670	0988
ISO 30 - ER 32/H 70	<b>3986</b>						
ISO 30 - ER 32/H 100	<b>3988</b>						
ISO 30 - ER 40/H 75	<b>3543</b>	63	3 ÷ 30	0191	4997	3671	0821
ISO 30 - ER 40/H 100	<b>3990</b>						
ISO 40 - ER 16/H 50	<b>2949</b>	32	1 ÷ 10	0186	4993	3698	0364
ISO 40 - ER 16/H 100	<b>3941</b>						
ISO 40 - ER 20/H 50	<b>2950</b>	35	1 ÷ 13	0188	4994	3699	0787
ISO 40 - ER 20/H 100	<b>2796</b>						
ISO 40 - ER 25/H 50	<b>2941</b>	42	1 ÷ 16	0190	4995	3669	0996
ISO 40 - ER 25/H 100	<b>2685</b>						
ISO 40 - ER 32/H 50	<b>2929</b>	50	2 ÷ 20	0191	4996	3670	0988
ISO 40 - ER 32/H 70	<b>2951</b>						
ISO 40 - ER 32/H 100	<b>2464</b>						
ISO 40 - ER 32/H 130	<b>2827</b>						
ISO 40 - ER 32/H 160	<b>2952</b>						
ISO 40 - ER 40/H 50	<b>2930</b>	63	3 ÷ 30	0195	4997	3671	0821
ISO 40 - ER 40/H 70	<b>2462</b>						
ISO 40 - ER 40/H 100	<b>2992</b>						
ISO 40 - ER 50/H 100	<b>2953</b>	78	6 ÷ 34	0195	4998	3668	4055
ISO 50 - ER 25/H 65	<b>2830</b>	42	1 ÷ 16	0190	4995	3669	0996
ISO 50 - ER 25/H 100	<b>2831</b>						
ISO 50 - ER 25/H 140	<b>2885</b>						
ISO 50 - ER 32/H 70	<b>2954</b>	50	2 ÷ 20	0191	4996	3670	0988
ISO 50 - ER 32/H 100	<b>2955</b>						
ISO 50 - ER 32/H 140	<b>2832</b>						
ISO 50 - ER 40/H 75	<b>2931</b>	63	3 ÷ 30	0195	4997	3671	0821
ISO 50 - ER 40/H 100	<b>2458</b>						
ISO 50 - ER 40/H 140	<b>2833</b>						
ISO 50 - ER 50/H 70	<b>2932</b>	78	6 ÷ 34	0195	4998	3668	4055



# KIT

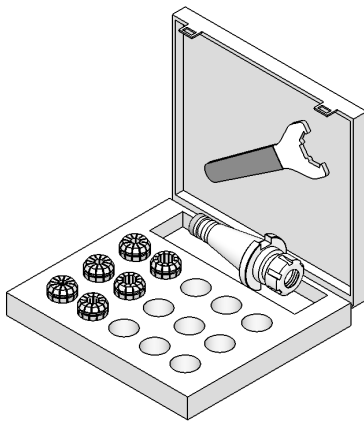
## CASSETTE KIT CON PORTAPINZE ER - GHIERA STANDARD

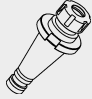
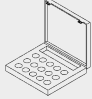


EQUIPMENT BOXES WITH DIN 6499 COLLET CHUCKS WITH STANDARD NUT



### CASSETTE CON SERIE RIDOTTA DI PINZE ER, MANDRINO E CHIAVE

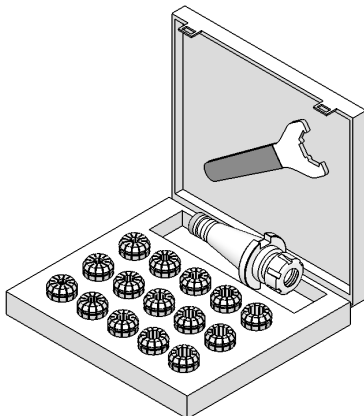
EQUIPMENT BOXES WITH REDUCED SET OF ER COLLETS

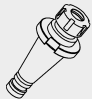
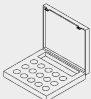




TIPO	Art.				
KIT Rid ISO 30/H 40 - ER 25	<b>7516</b>	2927	3695	3669	0996: $\varnothing 4-6-8-10-12-16$
KIT Rid ISO 30/H 50 - ER 32	<b>7517</b>	2928	3695	3670	0988: $\varnothing 4-6-8-10-12-16-20$
KIT Rid ISO 40/H 50 - ER 25	<b>7518</b>	2941	3695	3669	0996: $\varnothing 4-6-8-10-12-16$
KIT Rid ISO 40/H 50 - ER 32	<b>7519</b>	2929	3695	3670	0988: $\varnothing 4-6-8-10-12-16-20$
KIT Rid ISO 40/H 70 - ER 32	<b>7520</b>	2951	3695	3670	0988: $\varnothing 4-6-8-10-12-16-20$
KIT Rid ISO 40/H 50 - ER 40	<b>7521</b>	2930	3695	3671	0821: $\varnothing 4-6-8-10-12-16-20-25$
KIT Rid ISO 50/H 70 - ER 32	<b>7522</b>	2954	3695	3670	0988: $\varnothing 4-6-8-10-12-16-20$
KIT Rid ISO 50/H 75 - ER 40	<b>7523</b>	2931	3695	3671	0821: $\varnothing 4-6-8-10-12-16-20-25$

### CASSETTE CON SERIE COMPLETA DI PINZE ER, MANDRINO E CHIAVE

EQUIPMENT BOXES WITH COMPLETE SET OF ER COLLETS

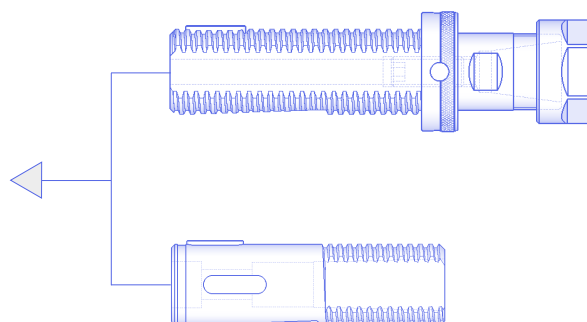
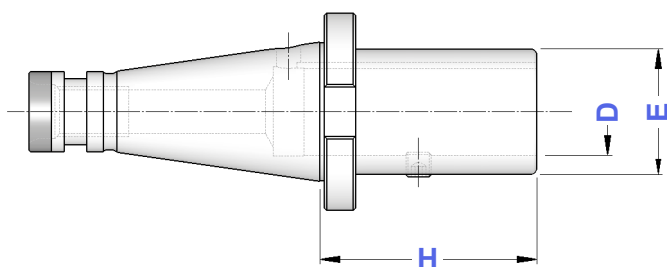
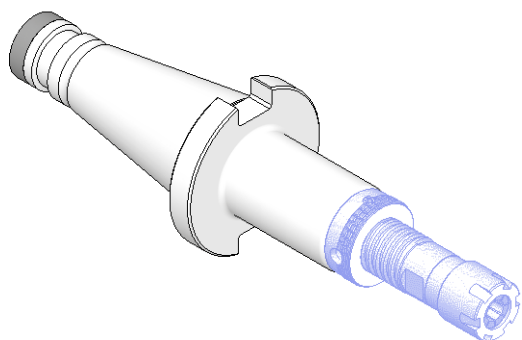


TIPO	Art.				
KIT ISO 30/H 40 - ER25	<b>7500</b>	2927	3695	3669	0996: $\varnothing 2 \div 16$ (15 Pinze)
KIT ISO 30/H 50 - ER32	<b>7501</b>	2928	3695	3670	0988: $\varnothing 3 \div 20$ (18 Pinze)
KIT ISO 40/H 50 - ER25	<b>7502</b>	2941	3695	3669	0996: $\varnothing 2 \div 16$ (15 Pinze)
KIT ISO 40/H 50 - ER32	<b>7503</b>	2929	3695	3670	0988: $\varnothing 3 \div 20$ (18 Pinze)
KIT ISO 40/H 70 - ER32	<b>7504</b>	2951	3695	3670	0988: $\varnothing 3 \div 20$ (18 Pinze)
KIT ISO 40/H 50 - ER40	<b>7505</b>	2930	3695	3671	0821: $\varnothing 4 \div 26$ (23 Pinze)
KIT ISO 50/H 70 - ER32	<b>7506</b>	2954	3695	3670	0988: $\varnothing 3 \div 20$ (18 Pinze)
KIT ISO 50/H 75 - ER40	<b>7507</b>	2931	3695	3671	0821: $\varnothing 4 \div 26$ (23 Pinze)

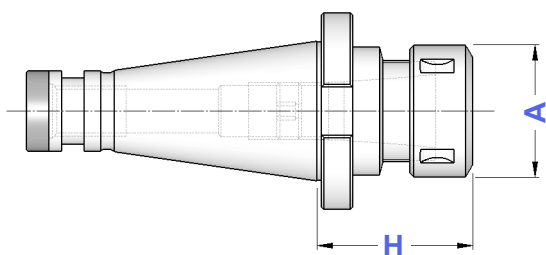


**DIN  
2080****PORTA MANDRINI CON ATTACCO TRAPEZIO DIN 6327**  
AUTOMOTIVES SHANK HOLDERS ACCORDING TO DIN 6327

TIPO	Art.	D	H	E	
ISO 40 - TR 28	<b>4230</b>	28	100	40	0021
ISO 40 - TR 36	<b>4231</b>	36	120	50	0021
ISO 50 - TR 28	<b>4232</b>	28	100	40	0021
ISO 50 - TR 36	<b>4233</b>	36	100	50	0021

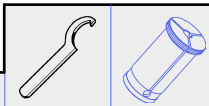
**DIN  
2080****MANDRINI PER PINZE EOC DIN 6388**  
DIN 6388 COLLET CHUCKS

TIPO	Art.	H	A	CAPACITA'			
ISO 40 - EOC 16	<b>4170</b>	55	43	2 ÷ 16	4067	2908	0768
ISO 40 - EOC 25	<b>3966</b>	70	60	2 ÷ 25	4068	2909	0769
ISO 40 - EOC 32	<b>3967</b>	80	72	3 ÷ 32	4069	2910	0770
ISO 50 - EOC 25	<b>3968</b>	70	60	2 ÷ 25	4068	2909	0769
ISO 50 - EOC 32	<b>3969</b>	80	72	3 ÷ 32	4069	2910	0770

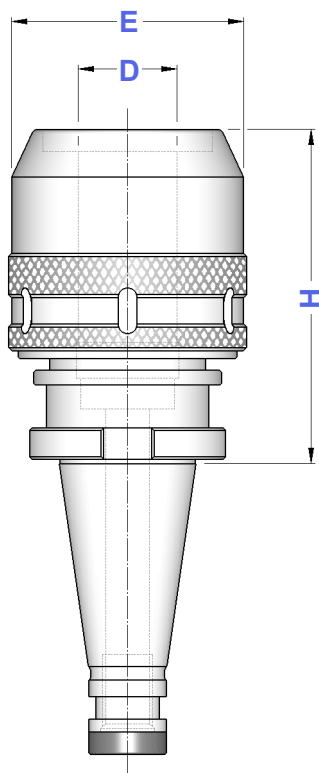


**DIN  
2080**

**MANDRINI A FORTE SERRAGGIO**  
HIGH GRIP CHUCKS



TIPO	Art.	H	D	CAPACITA'	E		
ISO 40 - PC 32	<b>2903</b>	78	32	3 ÷ 32	74,0	2910	0810
ISO 50 - PC 32	<b>2904</b>	85	32	3 ÷ 32	74,0	2910	0810



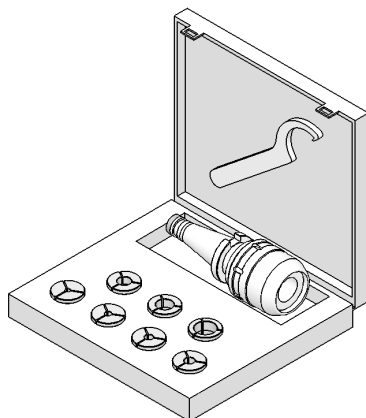
**I Mandrini a Forte Serraggio vengono forniti  
completi dell'apposita chiave**

*High grip Chucks are supplied complete  
with suitable wrench*

**CASSETTE CON MANDRINO  
CHIAVE E PINZE**

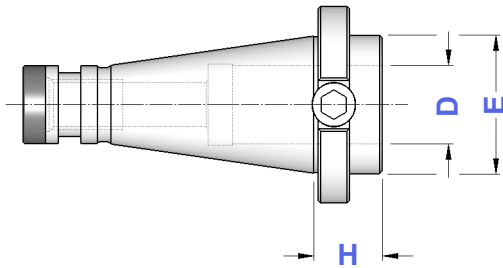
EQUIPMENT BOXES WITH COLLET CHUCK  
WRENCH AND COLLETS

TIPO	Art.				
KIT ISO 40 - PC 32 / H 78	<b>7541</b>	2903	3695	2910	0810: ø 6 - 8 - 10 - 12 - 16 - 20 - 25
KIT ISO 50 - PC 32 / H 85	<b>7542</b>	2904	3695	2910	0810: ø 6 - 8 - 10 - 12 - 16 - 20 - 25



**DIN  
2080**

**PORTAFRESE WELDON TIPO EXTRACORTO**  
SHORT TYPE END MILL HOLDERS FOR DIN 1835-B SHANKS



TIPO	Art.	D	H	E	
ISO 40 - WE 16/H 22	<b>3090</b>	16	22	44	0068
ISO 40 - WE 20/H 22	<b>3091</b>	20	22	44	0070
ISO 40 - WE 25/H 22	<b>3092</b>	25	22	44	0073
ISO 40 - WE 32/H 40	<b>3109</b>	32	40	44	0074
ISO 50 - WE 16/H 20	<b>3093</b>	16	20	66	4974
ISO 50 - WE 20/H 20	<b>3094</b>	20	20	66	4975
ISO 50 - WE 25/H 20	<b>3095</b>	25	20	66	4975
ISO 50 - WE 32/H 20	<b>3096</b>	32	20	66	4975

**DIN  
2080**

**PORTAFRESE WELDON**  
END MILL HOLDERS FOR DIN 1835-B SHANKS

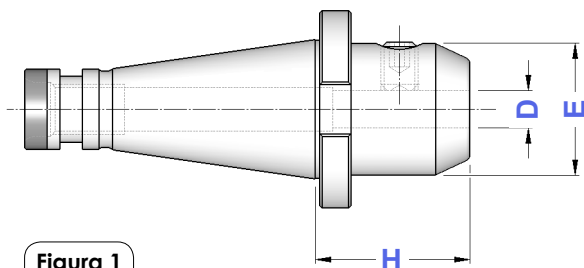


Figura 1

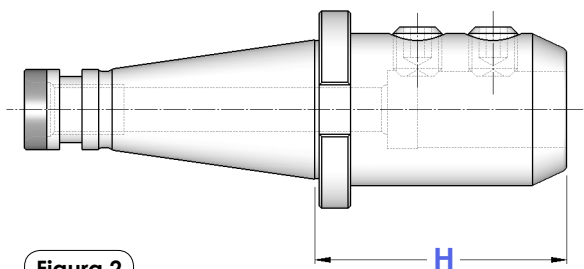


Figura 2

TIPO	Art.	D	H	E	Fig.	
ISO 30 - WE 6/H 40	<b>4442</b>	6	40	25	1	4970
ISO 30 - WE 8/H 40	<b>4443</b>	8	40	28	1	4971
ISO 30 - WE 10/H 40	<b>4444</b>	10	40	35	1	4972
ISO 30 - WE 12/H 40	<b>4445</b>	12	40	42	1	4973
ISO 30 - WE 16/H 50	<b>4447</b>	16	50	48	1	4974
ISO 30 - WE 20/H 63	<b>4449</b>	20	63	52	1	4975
ISO 30 - WE 25/H 75	<b>4450</b>	25	75	65	2	4976
ISO 40 - WE 6/H 50	<b>3647</b>	6	50	25	1	4970
ISO 40 - WE 8/H 50	<b>3648</b>	8	50	28	1	4971
ISO 40 - WE 10/H 50	<b>3649</b>	10	50	35	1	4972
ISO 40 - WE 12/H 50	<b>3650</b>	12	50	42	1	4973
ISO 40 - WE 14/H 50	<b>3610</b>	14	50	44	1	4973
ISO 40 - WE 16/H 63	<b>3651</b>	16	63	48	1	4974
ISO 40 - WE 18/H 63	<b>3611</b>	18	63	50	1	4974
ISO 40 - WE 20/H 63	<b>3652</b>	20	63	52	1	4975
ISO 40 - WE 25/H 90	<b>3653</b>	25	90	65	2	4976
ISO 40 - WE 32/H 90	<b>3654</b>	32	90	72	2	4977
ISO 40 - WE 40/H 90	<b>3312</b>	40	90	80	2	4977
ISO 50 - WE 6/H 50	<b>3655</b>	6	50	25	1	4970
ISO 50 - WE 8/H 50	<b>3656</b>	8	50	28	1	4971
ISO 50 - WE 10/H 63	<b>3657</b>	10	63	35	1	4972
ISO 50 - WE 12/H 63	<b>3658</b>	12	63	42	1	4973
ISO 50 - WE 14/H 63	<b>3340</b>	14	63	44	1	4973
ISO 50 - WE 16/H 63	<b>3659</b>	16	63	48	1	4974
ISO 50 - WE 18/H 63	<b>3341</b>	18	63	50	1	4974
ISO 50 - WE 20/H 63	<b>3660</b>	20	63	52	1	4975
ISO 50 - WE 25/H 80	<b>3661</b>	25	80	65	2	4976
ISO 50 - WE 32/H 85	<b>3662</b>	32	85	72	2	4977
ISO 50 - WE 40/H 95	<b>3663</b>	40	95	78	2	4977
ISO 50 - WE 50/H110	<b>3664</b>	50	110	97	2	4978

**DIN  
2080**

**MANDRINI PER UTENSILI ATTACCO WHISTLE NOTCH**

END MILL HOLDERS FOR DIN 1835-E SHANKS



TIPO	Art.	D	H	E	Fig.	G1	G2
ISO 40 - WN 6/H 50	<b>4458</b>	6	50	25	1	0233	4970
ISO 40 - WN 8/H 50	<b>4459</b>	8	50	28	1	0235	4971
ISO 40 - WN 10/H 50	<b>4460</b>	10	50	35	1	0238	4972
ISO 40 - WN 12/H 50	<b>4461</b>	12	50	42	1	0240	4973
ISO 40 - WN 14/H 50	<b>4462</b>	14	50	44	1	0240	4973
ISO 40 - WN 16/H 63	<b>4463</b>	16	63	48	1	0245	4974
ISO 40 - WN 18/H 63	<b>4464</b>	18	63	50	1	0245	4974
ISO 40 - WN 20/H 63	<b>4465</b>	20	63	52	1	0245	4975
ISO 40 - WN 25/H 90	<b>4466</b>	25	90	65	2	0212	4976
ISO 40 - WN 32/H 90	<b>4467</b>	32	90	72	2	0212	4977
ISO 50 - WN 6/H 50	<b>4468</b>	6	50	25	1	0233	4970
ISO 50 - WN 8/H 50	<b>4469</b>	8	50	28	1	0235	4971
ISO 50 - WN 10/H 63	<b>4470</b>	10	63	35	1	0238	4972
ISO 50 - WN 12/H 63	<b>4471</b>	12	63	42	1	0240	4973
ISO 50 - WN 14/H 63	<b>4472</b>	14	63	44	1	0240	4973
ISO 50 - WN 16/H 63	<b>4473</b>	16	63	48	1	0245	4974
ISO 50 - WN 18/H 63	<b>4474</b>	18	63	50	1	0245	4974
ISO 50 - WN 20/H 63	<b>4475</b>	20	63	52	1	0245	4975
ISO 50 - WN 25/H 80	<b>4476</b>	25	80	65	2	0247	4976
ISO 50 - WN 32/H 85	<b>4477</b>	32	85	72	2	0247	4977
ISO 50 - WN 40/H 95	<b>4478</b>	40	95	78	2	0247	4977

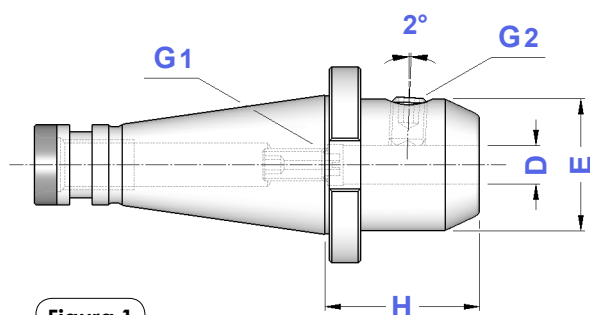


Figura 1

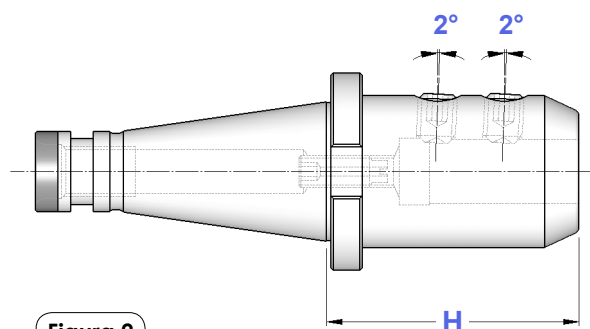
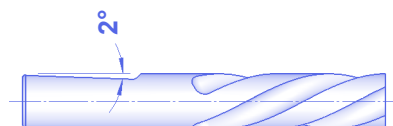
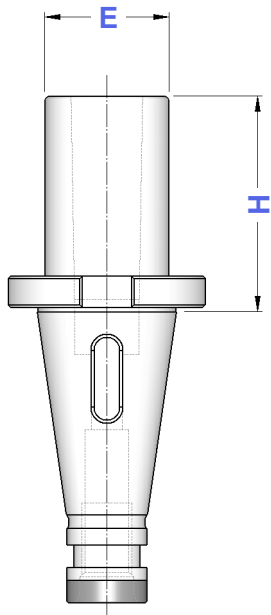
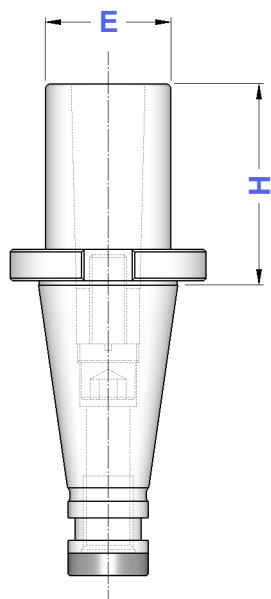
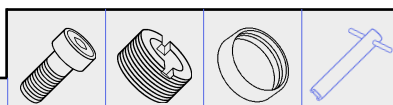


Figura 2



**DIN  
2080****RIDUZIONI A CONO MORSE PER PUNTE**  
MORSE TAPER ADAPTERS FOR TWIST DRILLS DIN 228 FORM B SHANK

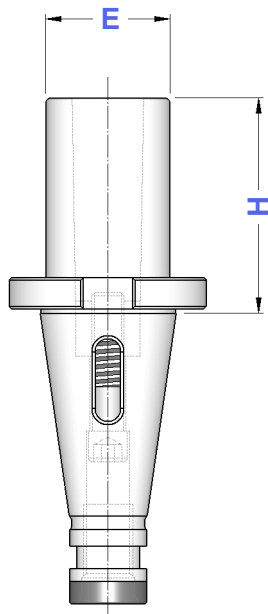
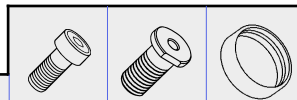
TIPO	Art.	CM	H	E	
ISO 30 - CM 1 PUNTE	<b>8517</b>	1	50	25	—
ISO 30 - CM 2 PUNTE	<b>3873</b>	2	50	32	—
ISO 30 - CM 3 PUNTE	<b>3874</b>	3	70	40	—
ISO 40 - CM 1 PUNTE	<b>8518</b>	1	50	25	7461
ISO 40 - CM 2 PUNTE	<b>8520</b>	2	50	32	7461
ISO 40 - CM 3 PUNTE	<b>3614</b>	3	65	40	7461
ISO 40 - CM 4 PUNTE	<b>3615</b>	4	95	48	7461
ISO 50 - CM 1 PUNTE	<b>8523</b>	1	45	25	7462
ISO 50 - CM 2 PUNTE	<b>8525</b>	2	60	32	7462
ISO 50 - CM 3 PUNTE	<b>8527</b>	3	65	40	7462
ISO 50 - CM 4 PUNTE	<b>3619</b>	4	65	48	7462
ISO 50 - CM 5 PUNTE	<b>3620</b>	5	105	63	7462




**DIN  
2080****RIDUZIONI A CONO MORSE PER FRESE**  
MT ADAPTERS FOR MILLING CUTTERS DIN 228 FORM A SHANK

TIPO	Art.	CM	H	E				
ISO 30 - CM 2 FRESE	<b>3876</b>	2	50	32	7448	7422	—	4569
ISO 30 - CM 3 FRESE	<b>3877</b>	3	80	40	7402	7423	—	4570
ISO 40 - CM 2 FRESE	<b>3622</b>	2	50	32	7448	7422	7461	4569
ISO 40 - CM 3 FRESE	<b>3623</b>	3	65	40	7403	7423	7461	4570
ISO 40 - CM 4 FRESE	<b>3624</b>	4	95	48	7404	7424	7461	4571
ISO 50 - CM 2 FRESE	<b>3626</b>	2	60	32	7448	7422	7462	4569
ISO 50 - CM 3 FRESE	<b>3627</b>	3	65	40	7403	7423	7462	4570
ISO 50 - CM 4 FRESE	<b>3628</b>	4	65	48	7407	7424	7462	4571
ISO 50 - CM 5 FRESE	<b>3629</b>	5	120	63	7408	7425	7462	4572

**DIN  
2080****RIDUZIONI A CONO MORSE PUNTE + FRESE  
COMBinate**

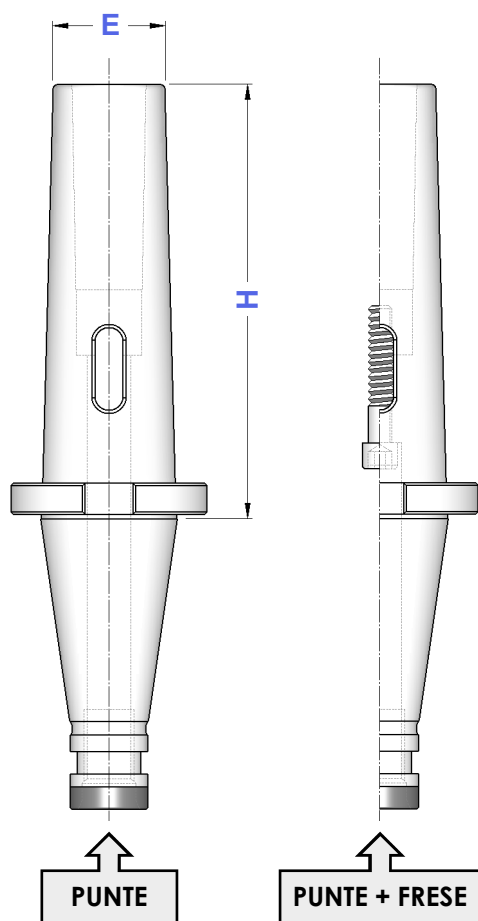
COMBI MORSE TAPER ADAPTERS: TWIST DRILLS + MILLING CUTTERS






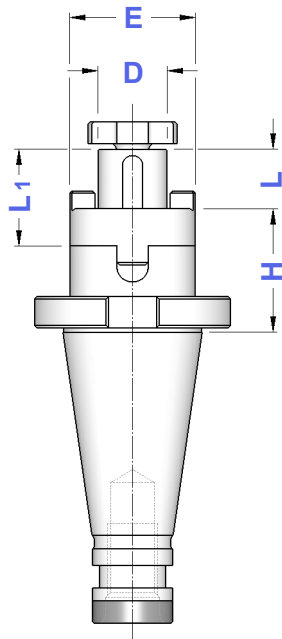
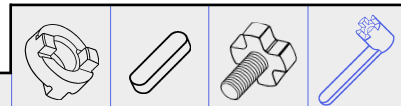
TIPO	Art.	CM	H	E			
ISO 30 - CM 1 P+F	<b>3872</b>	1	50	25	7400	—	—
ISO 30 - CM 2 P+F	<b>8531</b>	2	50	32	7400	0276	—
ISO 40 - CM 1 P+F	<b>3612</b>	1	50	25	7400	—	7461
ISO 40 - CM 2 P+F	<b>3613</b>	2	50	32	7401	—	7461
ISO 40 - CM 3 P+F	<b>8532</b>	3	65	40	7400	0130	7461
ISO 50 - CM 1 P+F	<b>3616</b>	1	45	25	7400	—	7462
ISO 50 - CM 2 P+F	<b>3617</b>	2	60	32	7405	—	7462
ISO 50 - CM 3 P+F	<b>3618</b>	3	65	40	7406	—	7462
ISO 50 - CM 4 P+F	<b>8533</b>	4	65	48	7409	—	7462
ISO 50 - CM 5 P+F	<b>8534</b>	5	105	63	7406	0131	7462

**DIN  
2080****RIDUZIONI A CONO MORSE PER PUNTE E PUNTE + FRESE  
TIPO PROLUNGATO**

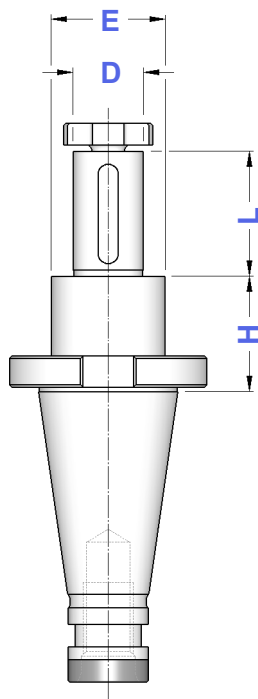
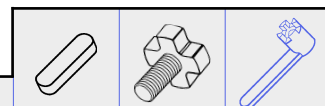
EXTENDED MORSE TAPER ADAPTERS: TWIST DRILLS + MILLING CUTTERS



TIPO	PUNTE + FRESE		CM	H	E			
	Art.	Art.						
ISO 40 - CM 1	<b>8519</b>	<b>3544</b>	1	115	18	7400	—	7461
ISO 40 - CM 2	<b>8521</b>	<b>3545</b>	2	125	25	7401	—	7461
ISO 40 - CM 3	<b>8522</b>	<b>3546</b>	3	140	33	7400	0130	7461
ISO 40 - CM 4	<b>3548</b>	—	4	150	40	—	—	7461
ISO 50 - CM 1	<b>8524</b>	<b>3785</b>	1	120	18	0035	—	7462
ISO 50 - CM 2	<b>8526</b>	<b>3786</b>	2	140	25	0038	—	7462
ISO 50 - CM 3	<b>8528</b>	<b>3787</b>	3	150	33	0040	—	7462
ISO 50 - CM 4	<b>8529</b>	<b>3788</b>	4	180	40	0042	—	7462
ISO 50 - CM 5	<b>8530</b>	<b>3789</b>	5	220	55	0055	0131	7462

**DIN  
2080****PORTAFRESE COMBINATI**  
DIN 6358 SHELL END MILL HOLDERS

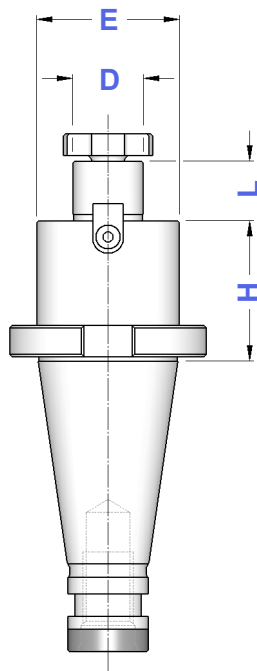
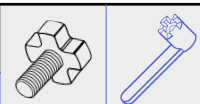
TIPO	Art.	D	L1	L	E				
ISO 30-D.16 C/H 35	<b>3878</b>	16	27	17	32	4090	0115	4985	4562
ISO 30-D.22 C/H 35	<b>3879</b>	22	31	19	40	4091	0116	4986	4563
ISO 30-D.27 C/H 35	<b>3880</b>	27	33	21	48	4092	0122	4987	4564
ISO 30-D.32 C/H 50	<b>3881</b>	32	38	24	58	4093	0125	4988	4565
ISO 40-D.16 C/H 52	<b>3817</b>	16	27	17	32	4090	0115	4985	4562
ISO 40-D.16 C/H 90	<b>4189</b>								
ISO 40-D.22 C/H 52	<b>3818</b>	22	31	19	40	4091	0116	4986	4563
ISO 40-D.22 C/H 90	<b>4190</b>								
ISO 40-D.27 C/H 52	<b>3819</b>	27	33	21	48	4092	0122	4987	4564
ISO 40-D.27 C/H 90	<b>4191</b>								
ISO 40-D.32 C/H 52	<b>3820</b>	32	38	24	58	4093	0125	4988	4565
ISO 40-D.32 C/H 100	<b>4192</b>								
ISO 40-D.40 C/H 52	<b>3821</b>	40	41	27	70	4094	0133	4989	4566
ISO 50-D.16 C/H 55	<b>3822</b>	16	27	17	32	4090	0115	4985	4562
ISO 50-D.16 C/H 100	<b>4194</b>								
ISO 50-D.22 C/H 55	<b>3823</b>	22	31	19	40	4091	0116	4986	4563
ISO 50-D.22 C/H 100	<b>4195</b>								
ISO 50-D.27 C/H 55	<b>3824</b>	27	33	21	48	4092	0122	4987	4564
ISO 50-D.27 C/H 100	<b>4196</b>								
ISO 50-D.32 C/H 55	<b>3825</b>	32	38	24	58	4093	0125	4988	4565
ISO 50-D.32 C/H 100	<b>4197</b>								
ISO 50-D.40 C/H 55	<b>3826</b>	40	41	27	70	4094	0133	4989	4566
ISO 50-D.40 C/H 100	<b>4198</b>								
ISO 50-D.50 C/H 55	<b>3827</b>	50	46	30	90	4095	0137	4990	4567

**DIN  
2080****PORTAFRESE CON CHIAVETTA DI TRASCINAMENTO**  
MILLING CUTTER HOLDERS WITH FEATHER KEY

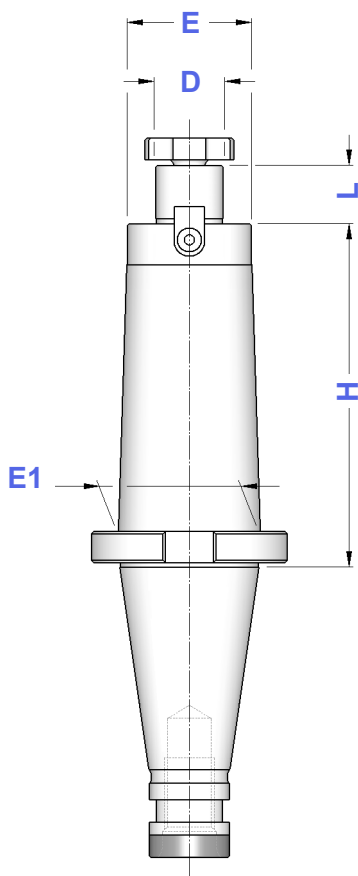
TIPO	Art.	D	H	L	E			
ISO 30 - D.16 CHT	<b>0134</b>	16	35	30	28	0147	4985	4562
ISO 30 - D.22 CHT	<b>0135</b>	22	35	40	36	0148	4986	4563
ISO 30 - D.27 CHT	<b>0136</b>	27	35	60	43	0149	4987	4564
ISO 40 - D.16 CHT	<b>4205</b>	16	37	30	28	0147	4985	4562
ISO 40 - D.22 CHT	<b>4207</b>	22	37	40	36	0148	4986	4563
ISO 40 - D.27 CHT	<b>4209</b>	27	37	60	43	0149	4987	4564
ISO 40 - D.32 CHT	<b>4211</b>	32	37	60	48	0150	4988	4565
ISO 40 - D.40 CHT	<b>4193</b>	40	37	60	56	0151	4989	4566
ISO 50 - D.22 CHT	<b>4216</b>	22	40	40	36	0148	4986	4563
ISO 50 - D.27 CHT	<b>4218</b>	27	40	60	43	0149	4987	4564
ISO 50 - D.32 CHT	<b>4220</b>	32	40	60	48	0150	4988	4565
ISO 50 - D.40 CHT	<b>4222</b>	40	40	60	56	0151	4989	4566
ISO 50 - D.50 CHT	<b>4214</b>	50	40	60	70	0152	4990	4567

**DIN  
2080**

**PORTAFRESE FISSI**  
DIN 6357 FACE MILL HOLDERS



TIPO	Art.	D	L	E	E1		
ISO 30 - D.13 FISSO/H 35	<b>5498</b>	13	12	28	28	0482	—
ISO 30 - D.16 FISSO/H 35	<b>4200</b>	16	17	38	38	4985	4562
ISO 30 - D.22 FISSO/H 35	<b>4201</b>	22	19	48	48	4986	4563
ISO 30 - D.27 FISSO/H 35	<b>4202</b>	27	21	58	58	4987	4564
ISO 40 - D.13 FISSO/H 45	<b>5499</b>	13	12	28	28	0482	—
ISO 40 - D.16 FISSO/H 45	<b>5500</b>	16	17	38	38	4985	4562
ISO 40 - D.16 FISSO/H 120	<b>5501</b>			32	39		
ISO 40 - D.22 FISSO/H 45	<b>5502</b>	22	19	48	48	4986	4563
ISO 40 - D.22 FISSO/H 120	<b>5503</b>			40	49		
ISO 40 - D.27 FISSO/H 45	<b>5504</b>	27	21	58	58	4987	4564
ISO 40 - D.27 FISSO/H 120	<b>5505</b>			48	60		
ISO 40 - D.32 FISSO/H 50	<b>5506</b>	32	24	78	78	4988	4565
ISO 40 - D.32 FISSO/H 120	<b>5507</b>			58	62		
ISO 40 - D.40 FISSO/H 55	<b>5508</b>	40	27	88	88	4989	4566
ISO 50 - D.16 FISSO/H 45	<b>5509</b>	16	17	38	38	4985	4562
ISO 50 - D.16 FISSO/H 150	<b>5510</b>			32	39		
ISO 50 - D.22 FISSO/H 45	<b>5511</b>	22	19	48	48	4986	4563
ISO 50 - D.22 FISSO/H 150	<b>5512</b>			40	49		
ISO 50 - D.27 FISSO/H 45	<b>5513</b>	27	21	58	58	4987	4564
ISO 50 - D.27 FISSO/H 150	<b>5514</b>			48	75		
ISO 50 - D.32 FISSO/H 50	<b>5515</b>	32	24	78	78	4988	4565
ISO 50 - D.32 FISSO/H 150	<b>5516</b>			58	80		
ISO 50 - D.40 FISSO/H 50	<b>5517</b>	40	27	88	88	4989	4566
ISO 50 - D.40 FISSO/H 150	<b>5518</b>			70	90		



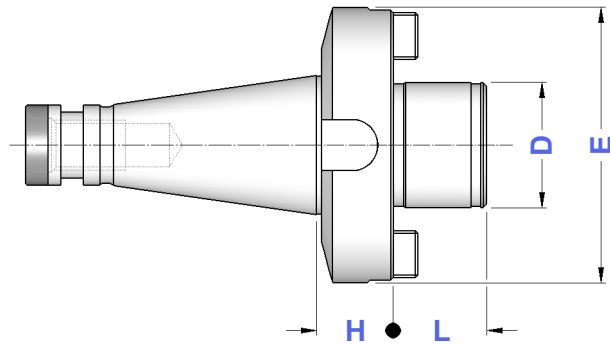
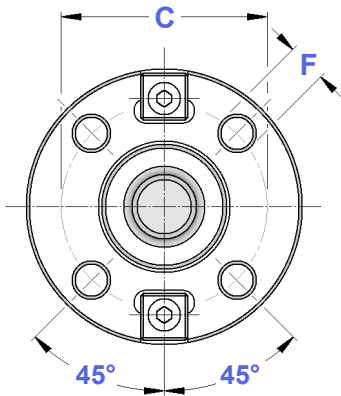


**DIN  
2080**

**ATTACCHI PER FRESE AD INSERTI**  
FACE MILL HOLDERS FOR FACE MILLING CUTTERS



TIPO	Art.	D	H	L	E	C	F	
ISO 40 - D. 40 FM	<b>4223</b>	40	20	30	89	66,7	M12	7461
ISO 40 - D. 60 FM	<b>4225</b>	60	30	40	129	101,6	M16	7461
ISO 50 - D. 40 FM	<b>4226</b>	40	30	30	89	66,7	M12	7462
ISO 50 - D. 60 FM	<b>4228</b>	60	30	40	129	101,6	M16	7462

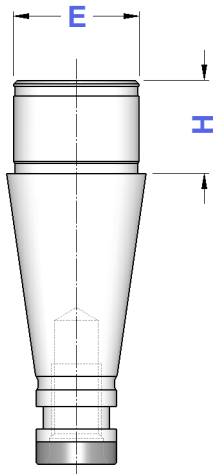


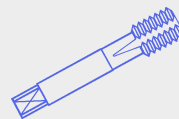
**DIN  
2080**

**CENTRATORI PER FRESE AD INSERTI**  
CENTERINGS FOR MILLING CUTTERS

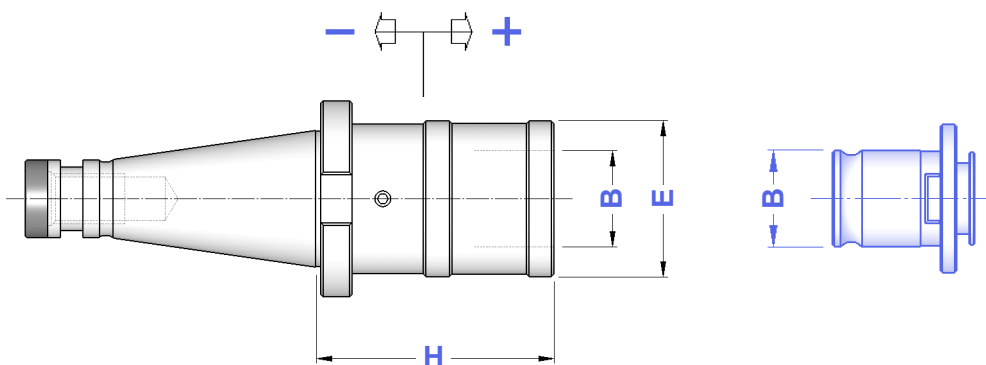
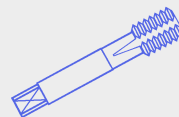


TIPO	Art.	H	E	
ISO 40 - D. 40 CF	<b>4012</b>	29	40	7461
ISO 50 - D. 60 CF	<b>4025</b>	39	60	7462

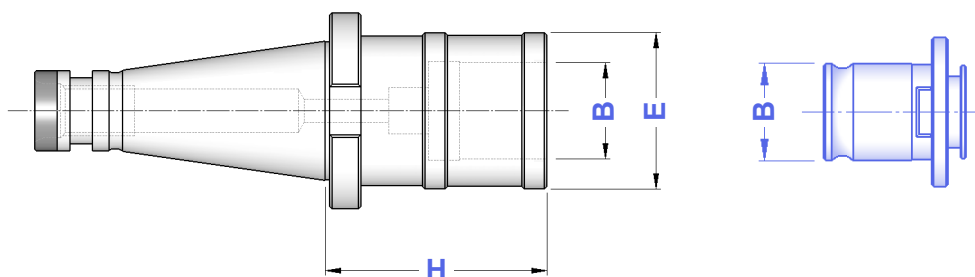


**DIN  
2080****MASCHIATORI A CAMBIO RAPIDO CON  
DOPPIA COMPENSAZIONE**  
DOUBLE COMPENSATION QUICK CHANGE TAP HOLDERS

TIPO	Art.	H	E	B	COMPENSAZIONE	
ISO 30 - B. 1	<b>3536</b>	58	36	19	- 7,5 + 7,5	M 3 ÷ M 12 (*M16)
ISO 30 - B. 2	<b>3537</b>	85	53	31	- 15,0 + 15,0	M 6 ÷ M 20 (*M30)
ISO 40 - B. 1	<b>3538</b>	53	38	19	- 7,5 + 7,5	M 3 ÷ M 12 (*M16)
ISO 40 - B. 2	<b>3539</b>	77	55	31	- 15,0 + 15,0	M 6 ÷ M 20 (*M30)
ISO 40 - B. 3	<b>3540</b>	142	79	48	- 20,0 + 20,0	M 14 ÷ M 33 (*M48)
ISO 50 - B. 1	<b>4199</b>	57	38	19	- 9,0 + 9,0	M 3 ÷ M 12 (*M16)
ISO 50 - B. 2	<b>3541</b>	79	55	31	- 15,0 + 15,0	M 6 ÷ M 20 (*M30)
ISO 50 - B. 3	<b>3542</b>	125	79	48	- 20,0 + 20,0	M 14 ÷ M 33 (*M48)

\* Bussole con grani  
Adapters with screws**DIN  
2080****MASCHIATORI A CAMBIO RAPIDO  
SENZA COMPENSAZIONE**  
QUICK CHANGE TAP HOLDERS WITHOUT COMPENSATION

TIPO	Art.	H	E	B	
ISO 30 - B. 1 FISSO	<b>4941</b>	59	33	19	M 3 ÷ M 12 (*M16)
ISO 30 - B. 2 FISSO	<b>4942</b>	84	50	31	M 6 ÷ M 20 (*M30)
ISO 40 - B. 1 FISSO	<b>4943</b>	52	33	19	M 3 ÷ M 12 (*M16)
ISO 40 - B. 2 FISSO	<b>4944</b>	74	50	31	M 6 ÷ M 20 (*M30)
ISO 50 - B. 1 FISSO	<b>5108</b>	55	33	19	M 3 ÷ M 12 (*M16)
ISO 50 - B. 2 FISSO	<b>5109</b>	78	50	31	M 6 ÷ M 20 (*M30)

\* Bussole con grani  
Adapters with screwsI maschiatori sono fornibili anche con la sola compensazione a trazione ( SFILAMENTO )  
Tap holders are also available with traction compensation only ( TENSION ONLY )