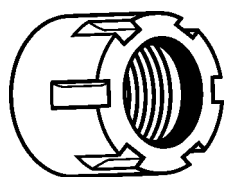
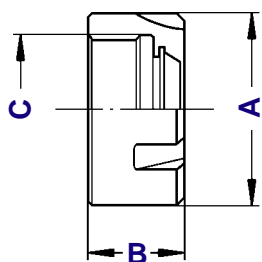


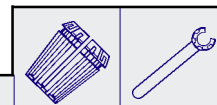
DIN 6499
GM

GHIERE ER TIPO MINI
ER CLAMPING NUTS SMALL TYPE

GM



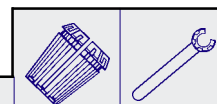
FILETTO DESTRO
RIGHT THREAD



TIPO	Art.	A	B	C		
GM 8	0373	12	10,8	10 x 0,75	0554	5717
GM 11	0432	16	12,0	13 x 0,75	5573	5718
GM 16	0334	22	18,0	19 x 1,00	0364	5719
GM 20	2829	28	19,0	24 x 1,00	0787	5720
GM 25	2822	35	20,0	30 x 1,00	0996	5721



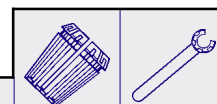
FILETTO SINISTRO
LEFT THREAD



TIPO	Art.	A	B	C		
GM 8 L	1188	12	10,8	10 x 0,75 SX	0554	5717
GM 11 L	1189	16	12,0	13 x 0,75 SX	5573	5718
GM 16 L	1190	22	18,0	19 x 1,00 SX	0364	5719
GM 20 L	1192	28	19,0	24 x 1,00 SX	0787	5720
GM 25 L	1194	35	20,0	30 x 1,00 SX	0996	5721



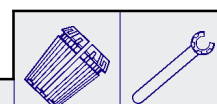
PER ALTE VELOCITA'
FILETTO DESTRO
RIGHT THREAD



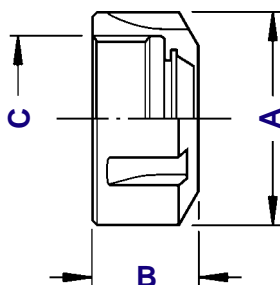
TIPO	Art.	A	B	C		
GM 16 AV	1229	22	18,0	19 x 1,00	0364	5719
GM 20 AV	1230	28	19,0	24 x 1,00	0787	5720
GM 25 AV	1231	35	20,0	30 x 1,00	0996	5721



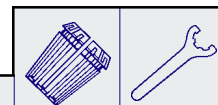
PER ALTE VELOCITA'
FILETTO SINISTRO
LEFT THREAD



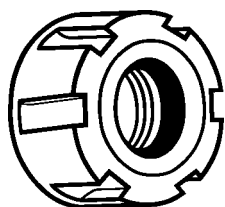
TIPO	Art.	A	B	C		
GM 16 AV-L	1233	22	18,0	19 x 1,00 SX	0364	5719
GM 20 AV-L	1234	28	19,0	24 x 1,00 SX	0787	5720
GM 25 AV-L	1235	35	20,0	30 x 1,00 SX	0996	5721



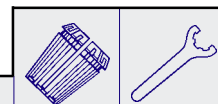
FILETTO DESTRO
RIGHT THREAD



TIPO	Art.	A	B	C		
GS 16	3766	32	17,5	22 x 1,5	0364	3698
GS 20	3767	35	19,0	25 x 1,5	0787	3699
GS 25	0326	42	20,0	32 x 1,5	0996	3669
GS 32	1962	50	22,5	40 x 1,5	0988	3670
GS 40	1963	63	25,5	50 x 1,5	0821	3671
GS 50	5713	78	35,3	64 x 2,0	4055	3668



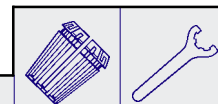
FILETTO SINISTRO
LEFT THREAD



TIPO	Art.	A	B	C		
GS 16 L	1202	32	17,5	22 x 1,5 SX	0364	3698
GS 20 L	1203	35	19,0	25 x 1,5 SX	0787	3699
GS 25 L	1207	42	20,0	32 x 1,5 SX	0996	3669
GS 32 L	1208	50	22,5	40 x 1,5 SX	0988	3670
GS 40 L	1211	63	25,5	50 x 1,5 SX	0821	3671



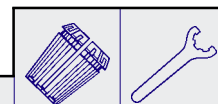
PER ALTE VELOCITA'
FILETTO DESTRO
RIGHT THREAD



TIPO	Art.	A	B	C		
GS 16 AV	4993	30	18,0	22 x 1,5	0364	3698
GS 20 AV	4994	34	19,0	25 x 1,5	0787	3699
GS 25 AV	4995	42	20,0	32 x 1,5	0996	3669
GS 32 AV	4996	50	22,5	40 x 1,5	0988	3670
GS 40 AV	4997	63	25,5	50 x 1,5	0821	3671



PER ALTE VELOCITA'
FILETTO SINISTRO
LEFT THREAD

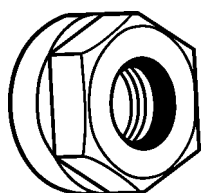
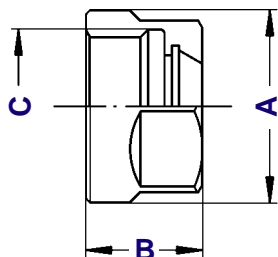


TIPO	Art.	A	B	C		
GS 16 AV-L	3071	30	18,0	22 x 1,5 SX	0364	3698
GS 20 AV-L	3072	34	19,0	25 x 1,5 SX	0787	3699
GS 25 AV-L	3073	42	20,0	32 x 1,5 SX	0996	3669
GS 32 AV-L	3074	50	22,5	40 x 1,5 SX	0988	3670
GS 40 AV-L	3075	63	25,5	50 x 1,5 SX	0821	3671

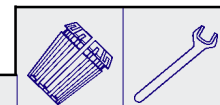
**DIN 6499
GE**

GHIERE ER TIPO ESAGONALE
ER CLAMPING NUTS EXAGONAL TYPE

GE



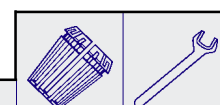
FILETTO DESTRO
RIGHT THREAD



TIPO	Art.	A	B	C		
GE 11	1157	19	11,3	14 x 0,75	5573	2905
GE 12	0342	19	14,0	14 x 0,75	5601	2905
GE 16	0324	28	17,5	22 x 1,50	0364	2906
GE 20	0325	34	19,0	25 x 1,50	0787	2907



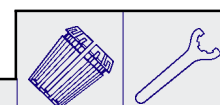
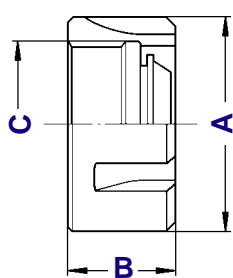
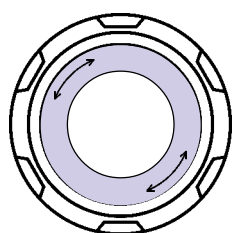
PER ALTE VELOCITA'
FILETTO DESTRO
RIGHT THREAD



TIPO	Art.	A	B	C		
GE 16 AV	1214	28	17,5	22 x 1,50	0364	2906
GE 20 AV	1215	34	19,0	25 x 1,50	0787	2907

**DIN 6499
GC**

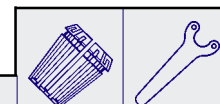
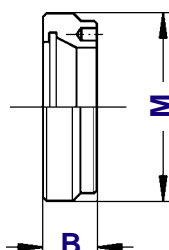
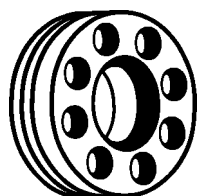
GHIERE ER CON RALLA GIREVOLE
ER NUTS WITH ROTATING RING



TIPO	Art.	A	B	C		
GC 16	4954	29	19,5	22 x 1,5	0364	3698
GC 20	4955	34	21,0	25 x 1,5	0787	3699
GC 25	3697	42	22,5	32 x 1,5	0996	3669
GC 32	2911	50	26,0	40 x 1,5	0988	3670
GC 40	2912	63	29,0	50 x 1,5	0821	3671
GC 50	2913	78	40,0	64 x 2,0	4055	3668
GC 60	5714	83	36,0	70 x 1,5	4056	-----

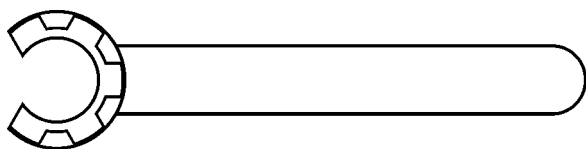
**DIN 6499
GA**

GHIERE ER CON FILETTO ESTERNO - TIPO "A"
ER CLAMPING NUTS WITH OUTSIDE THREAD - "A" TYPE

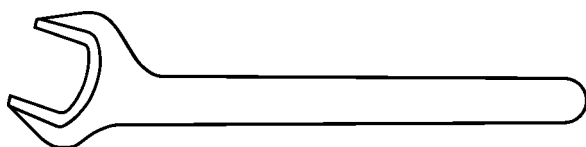


TIPO	Art.	B	M		
GA 11	2867	6,0	18 x 1,0	5573	3169
GA 16	2868	8,0	24 x 1,0	0364	3170
GA 20	2869	11,0	28 x 1,5	0787	3171
GA 25	2870	12,5	32 x 1,5	0996	3172
GA 32	2871	14,0	40 x 1,5	0988	3173

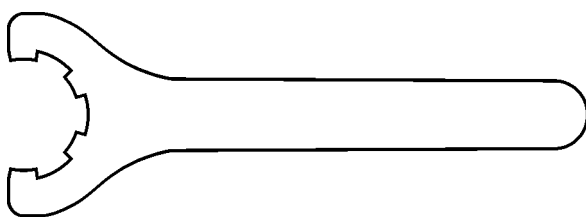
GAIT 5.02

**DIN 6499
MINI****CHIAVI ER PER GHIERE MINI**
ER WRENCHES FOR SMALL CLAMPING NUTS

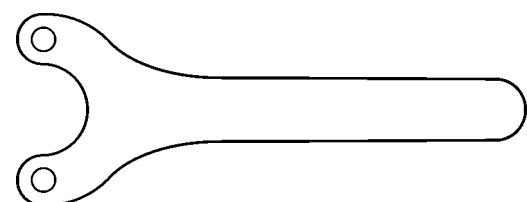
TIPO	Art.	
CH 8 Mini	5717	0373
CH 11 Mini	5718	0432
CH 16 Mini	5719	0334
CH 20 Mini	5720	2829
CH 25 Mini	5721	2822

**DIN 6499
CE****CHIAVI ER PER GHIERE ESAGONALI**
ER WRENCHES FOR EXAGONAL CLAMPING NUTS

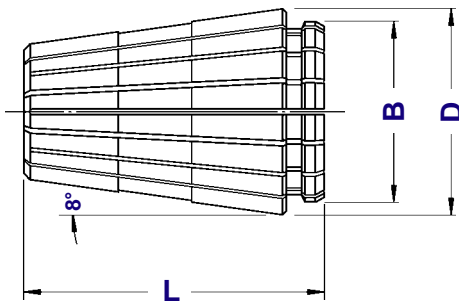
TIPO	Art.	
CH 11 CE	2905	1157
CH 12 CE	2905	0342
CH 16 CE	2906	0324
CH 20 CE	2907	0325

**DIN 6499
ST****CHIAVI ER PER GHIERE STANDARD**
ER WRENCHES FOR STANDARD CLAMPING NUTS

TIPO	Art.	
CH 16 ST	3698	3766
CH 20 ST	3699	3767
CH 25 ST	3669	0326
CH 32 ST	3670	1962
CH 40 ST	3671	1963
CH 50 ST	3668	5713

**DIN 6499
A****CHIAVI ER PER GHIERE CON FILETTO ESTERNO**
ER WRENCHES FOR OUTSIDE THREAD CLAMPING NUTS

TIPO	Art.	
CH 11 A	3169	2867
CH 16 A	3170	2868
CH 20 A	3171	2869
CH 25 A	3172	2870
CH 32 A	3173	2871

TS**PINZE TS**
TS COLLETS**ER (DIN 6499)**
COMPATIBILE

TIPO	Art.	CAPACITA'	D	B	L	PROGRESSIONE
TS 16	5200	1 ÷ 10	17	13,6	24,0	mm 0,5
TS 20	5201	2 ÷ 13	21	17,0	30,5	mm 0,5
TS 25	5202	2 ÷ 16	26	21,0	34,0	mm 0,5
TS 32	5203	3 ÷ 20	33	27,2	40,0	mm 0,5
TS 40	5204	4 ÷ 26	41	32,0	46,0	mm 0,5

Le pinze TS sono intercambiabili con le normali pinze ER (DIN 6499) grazie alla medesima conicità posteriore di 8°.

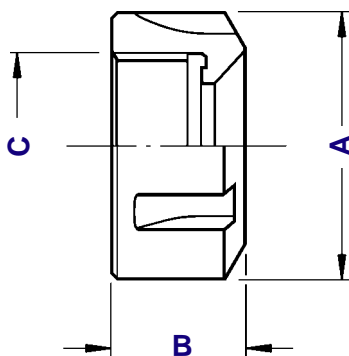
Per poterle montare su un normale portapinza ER è necessaria la sostituzione della ghiera essendo diversa la parte anteriore.

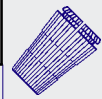

Caratteristiche: elevata precisione del sistema
ottima resa alle alte velocità

TS collets are interchangeable with ER collets (DIN 6499) thanks to the same 8° rear taper.

To fit them in a standard ER collet chuck, a nut replacement is needed because of the difference in fore part of the collet.

*Characteristics: system with high precision
an excellent yield in high speed*

G-TS**GHIERE PER PINZE TS**
CLAMPING NUTS FOR TS COLLETS

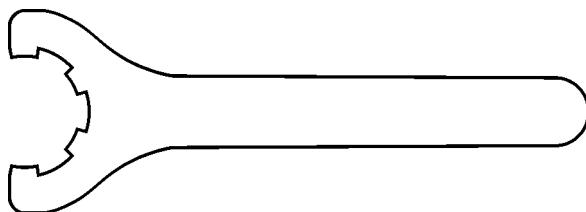
TIPO	Art.	A	B	C		
G 16 TS	5294	32	15,0	22 x 1,5	5200	3698
G 20 TS	5295	35	16,5	25 x 1,5	5201	3699
G 25 TS	5296	42	18,5	32 x 1,5	5202	3669
G 32 TS	5297	50	22,0	40 x 1,5	5203	3670
G 40 TS	5298	63	25,0	50 x 1,5	5204	3671


Le ghiera tipo Standard per pinze TS hanno il medesimo filetto delle normali ghiera ER (DIN 6499) rendendo così completamente intercambiabili i due sistemi.

A richiesta forniamo per questo tipo di pinza anche ghiera tipo Mini aventi perciò le medesime caratteristiche delle ER-Mini

Standard nuts for TS collets have the same thread of ER Standard nuts; this makes those systems interchangeable.

On request we supply for this kind of collet also Mini nuts that have the same characteristics of ER-Mini nuts.

CH-TS**CHIAVI PER GHIERE TS**
WRENCHES FOR TS CLAMPING NUTS

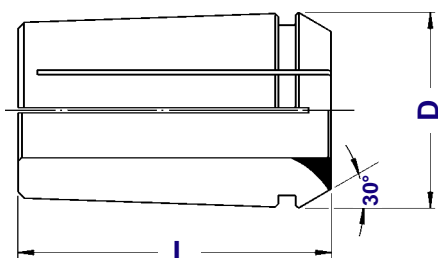
TIPO	Art.	
CH 16 TS	3698	5294
CH 20 TS	3699	5295
CH 25 TS	3669	5296
CH 32 TS	3670	5297
CH 40 TS	3671	5298

GAIT 5.02

DIN 6388/B

PINZE DIN 6388/B DIN 6388/B COLLETS

**STANDARD
PRECISION**

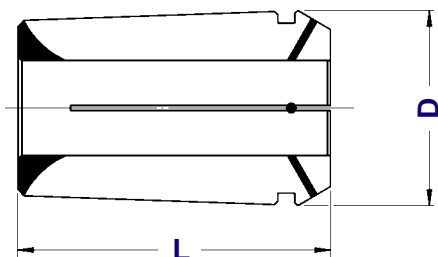


TIPO	Art.	CAPACITA'	D	L	PROGRESSIONE	Einheits
EOG 12	0645	1 ÷ 12	19,80	34	mm 0,5	407E
EOG 16	0768	2 ÷ 16	25,50	40	mm 0,5	415E
EOG 20	0783	2 ÷ 20	29,80	45	mm 0,5	4541E
EOG 25	0769	2 ÷ 25	35,05	52	mm 0,5	462E
EOG 32	0770	3 ÷ 32	43,70	60	mm 0,5	467E

RF

PINZE DIN 6388 A TENUTA STAGNA WATERTIGHT DIN 6388 COLLETS

**STANDARD
PRECISION**



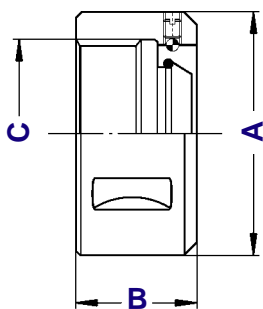
TIPO	Art.	CAPACITA'	D	L	PROGRESSIONE
EOG 16 RF	0768 RF	4 ÷ 16	25,50	40	mm 0,5
EOG 25 RF	0769 RF	4 ÷ 25	35,05	52	mm 0,5
EOG 32 RF	0770 RF	8 ÷ 32	43,70	60	mm 0,5

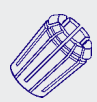

Pinze con inserti in neoprene e passaggio centrale del refrigerante. Bloccano solo il diametro nominale.

Collets with neoprene insertions and coolant only through the collet hole. Those collets clamp only nominal diameter.

DIN 6388

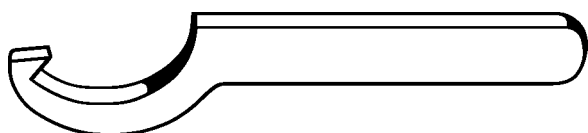
GHIERE PER PINZE DIN 6388 CLAMPING NUTS FOR COLLETS DIN 6388 TYPE




TIPO	Art.	A	B	C		
GOC 16	4067	43	24,0	33 x 1,5	0768	2908
GOC 20	4008	50	28,0	42 x 2,0	0783	2908
GOC 25	4068	60	30,0	48 x 2,0	0769	2909
GOC 32	4069	72	33,5	60 x 2,5	0770	2910

DIN 6388

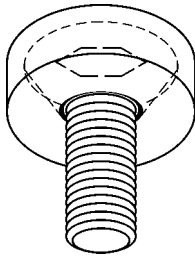
CHIAVI PER GHIERE DIN 6388 WRENCHES FOR DIN 6388 NUTS



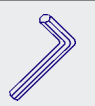
TIPO	Art.	
CH 16 GOC	2908	4067
CH 20 GOC	2908	4008
CH 25 GOC	2909	4068
CH 32 GOC	2910	4069

VTT

VITI A TESTA TONDA ROUND HEAD SCREWS

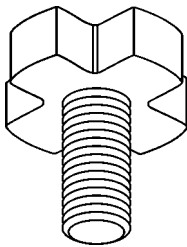


TIPO	Art.	
VTT M 8/D. 16	4979	E. 5
VTT M 10/D. 22	4980	E. 6
VTT M 12/D. 27	4981	E. 8
VTT M 16/D. 32	4982	E. 10
VTT M 20/D. 40	4983	E. 12



VTC

VITI TESTA A CROCE CROSS HEAD SCREWS

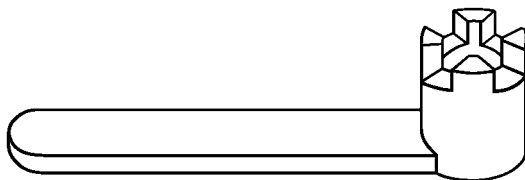


TIPO	Art.	
VTC M 8/D. 16	4985	4562
VTC M 10/D. 22	4986	4563
VTC M 12/D. 27	4987	4564
VTC M 16/D. 32	4988	4565
VTC M 20/D. 40	4989	4566
VTC M 24/D. 50	4990	4567



CH-VTC

CHIAVI PER VITI TESTA A CROCE WRENCHES FOR CROSS HEAD SCREWS

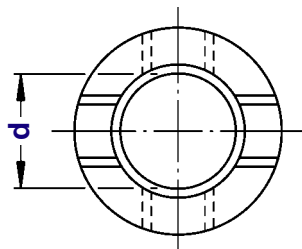
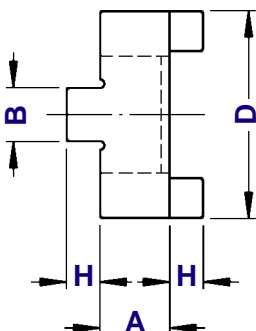


TIPO	Art.	
CH 16 VTC	4562	4985
CH 22 VTC	4563	4986
CH 27 VTC	4564	4987
CH 32 VTC	4565	4988
CH 40 VTC	4566	4989
CH 50 VTC	4567	4990



AT

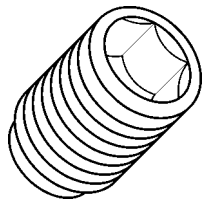
GIUNTI DI TRASCINAMENTO CLUTCH DRIVE RINGS



TIPO	Art.	D	H	A	B
AT - d. 16	4090	32	5,0	10	8
AT - d. 22	4091	40	5,6	12	10
AT - d. 27	4092	48	6,3	12	12
AT - d. 32	4093	58	7,0	14	14
AT - d. 40	4094	70	8,0	14	16
AT - d. 50	4095	90	9,0	16	18

G-WE

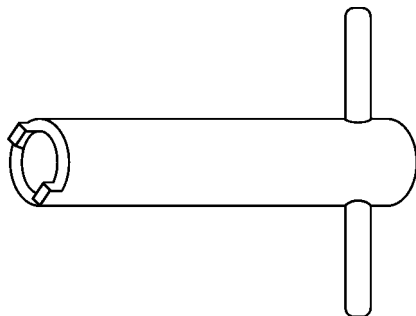
GRANI DI FISSAGGIO PER WELDON WELDON END MILL SCREWS



TIPO	Art.	FILETTO
G - WE 6	4970	M 6 x 10
G - WE 8	4971	M 8 x 10
G - WE 10	4972	M 10 x 12
G - WE 12	4973	M 12 x 16
G - WE 14	4973	M 12 x 16
G - WE 16	4974	M 14 x 16
G - WE 18	4974	M 14 x 16
G - WE 20	4975	M 16 x 16
G - WE 25	4976	M 18 x 2 x 20
G - WE 32	4977	M 20 x 2 x 20
G - WE 40	4977	M 20 x 2 x 20
G - WE 50	4978	M 24 x 2 x 20

CH-CM

CHIAVI PER RIDUZIONI A CONO MORSE WRENCHES FOR MORSE TAPER ADAPTERS

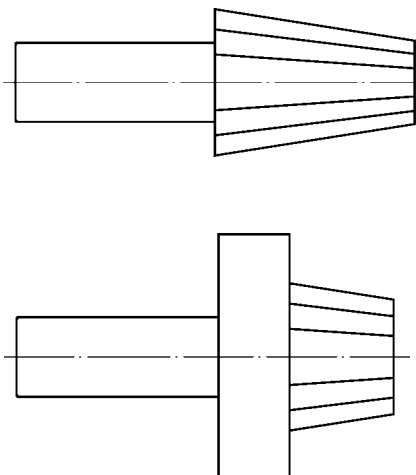


TIPO	Art.	
CH - CM 2	4569	7422
CH - CM 3	4570	7423
CH - CM 4	4571	7424
CH - CM 5	4572	7425

Attenzione!!
Il filetto della gabbia è sinistro.
Attention!!
Thread on retaining bush is left hand

TP

TAMPONI PULITORI TAPER CLEANER



TIPO	Art.
TP - ISO 30	4407
TP - ISO 40	4408
TP - ISO 45	4409
TP - ISO 50	4410
TP - CM. 1	4411
TP - CM. 2	4412
TP - CM. 3	4413
TP - CM. 4	4414
TP - CM. 5	4415
TP - HSK 32 A/C/E	5205
TP - HSK 40 A/C/E	5206
TP - HSK 50 A/C/E	5207
TP - HSK 63 A/C/E	5208
TP - HSK 80 A/C/E	5209
TP - HSK100 A/C/E	5210