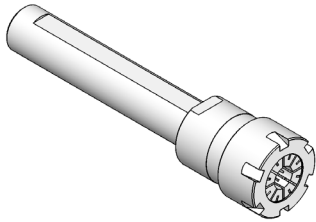


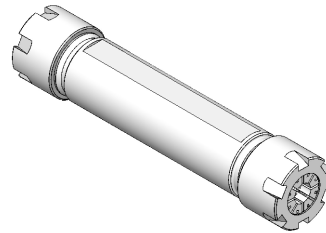
INDICE DELL'ATTACCO CILINDRICO - DIN 1835 A

INDEX OF DIN 1835 A - STRAIGHT SHANK

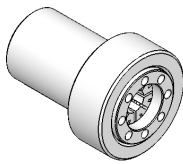
**PORTAPINZA ER
CON GHIERA MINI**
ER COLLET CHUCKS
WITH MINI NUT



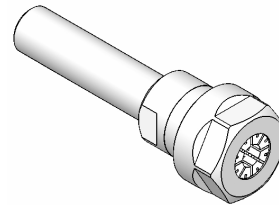
PORTAPINZA ER DOPPI
DOUBLE ER COLLET CHUCKS



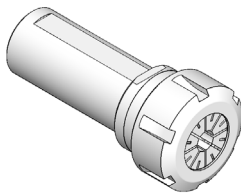
**PORTAPINZA ER
CON GHIERA INTERNA**
ER COLLET CHUCKS
WITH INSIDE NUT



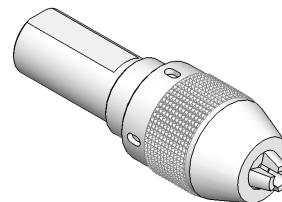
**PORTAPINZA ER
CON GHIERA ESAGONALE**
ER COLLET CHUCKS
WITH HEXAGONAL NUT



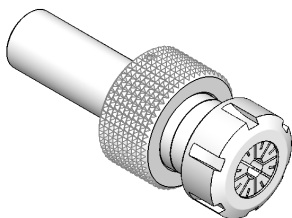
**PORTAPINZA ER
CON GHIERA STANDARD**
ER COLLET CHUCKS
WITH STANDARD NUT



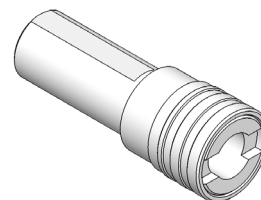
AUTOSERRANTI INTEGRALI
MONOLITHIC DRILL CHUCKS



PORTA ALESATORI OSCILLANTI
FLOATING REAMER HOLDERS

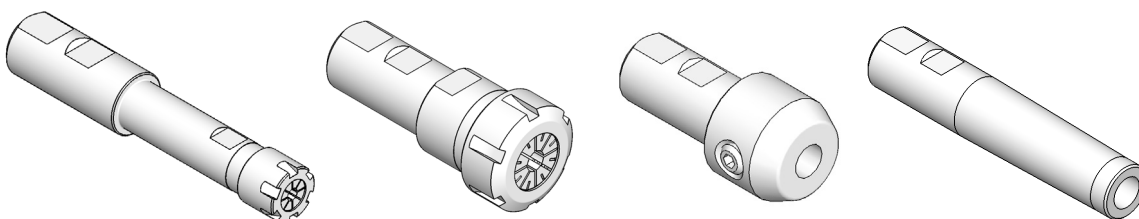


MASCHIATORI A CAMBIO RAPIDO
QUICK CHANGE TAP HOLDERS



ATTACCO WELDON DIN 1835 B

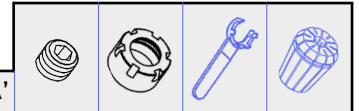
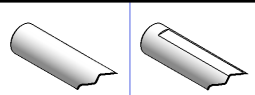
DIN 1835 B WELDON SHANK



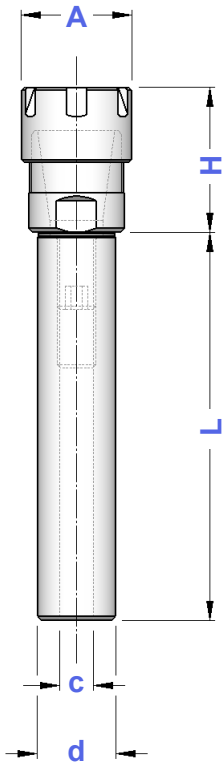
**DIN
1835 A**

PORTAPINZE ER CON ATTACCO CILINDRICO - GHIERA MINI

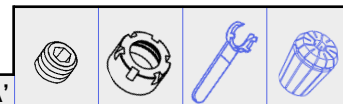
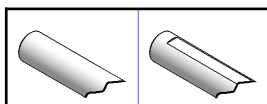
STRAIGHT SHANK ER - DIN 6499 COLLET CHUCKS - MINI NUT







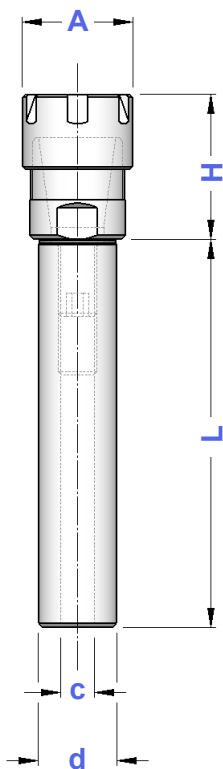
TIPO	Senza Piano	Con Piano	H	A	C	CAPACITA'				
d 5 - ER 8GM /L 45	3207	—	24	12	—	1 ÷ 5	—	0373	5717	0554
d 6 - ER 8GM /L 45	0394	—	24	12	—	1 ÷ 5	—	0373	5717	0554
d 6 - ER11 GM /L 45	0157	—	25	16	—	1 ÷ 7	—	0432	5718	5573
d 7 - ER11 GM /L 45	0187	—	25	16	—	1 ÷ 7	—	0432	5718	5573
d 8 - ER 8GM /L 55	0395	—								
d 8 - ER 8GM /L 80	0155	—	24	12	—	1 ÷ 5	—	0373	5717	0554
d 8 - ER 8GM /L 100	2000	—								
d 8 - ER 8GM /L 130	2001	—								
d 8 - ER11 GM /L 55	2889	—	25	16	—	1 ÷ 7	—	0432	5718	5573
d 8 - ER11 GM /L 100	2894	—								
d 8 - ER16 GM /L 55	2026	—	37	22	—	1 ÷ 10	—	1229	5719	0364
d 8 - ER16 GM /L 100	2027	—								
d 10 - ER 8GM /L 55	2937	—								
d 10 - ER 8GM /L 80	5138	—	24	12	5	1 ÷ 5	0173	0373	5717	0554
d 10 - ER 8GM /L 100	2938	—								
d 10 - ER 8GM /L 130	5139	—								
d 10 - ER11 GM /L 55	2890	—	25	16	5	1 ÷ 7	0173	0432	5718	5573
d 10 - ER11 GM /L 80	5140	—								
d 10 - ER11 GM /L 100	2896	—								
d 10 - ER11 GM /L 130	5141	—								
d 10 - ER16 GM /L 60	2891	—	37	22	5	1 ÷ 10	0173	1229	5719	0364
d 10 - ER16 GM /L 80	5142	—								
d 10 - ER16 GM /L 100	2956	—								
d 12 - ER 8GM /L 55	2002	—								
d 12 - ER 8GM /L 70	5143	—	15	12	5	1 ÷ 5	0173	0373	5717	0554
d 12 - ER 8GM /L 100	2962	—								
d 12 - ER 8GM /L 140	2991	—								
d 12 - ER11 GM /L 55	2892	—	25	16	7	1 ÷ 7	0181	0432	5718	5573
d 12 - ER11 GM /L 70	3208	—								
d 12 - ER11 GM /L 100	3003	—								
d 12 - ER11 GM /L 140	0217	—								
d 12 - ER16 GM /L 55	2893	—	37	22	7	1 ÷ 10	0181	1229	5719	0364
d 12 - ER16 GM /L 80	3209	—								
d 12 - ER16 GM /L 120	3214	—								
d 15 - ER20 GM /L 100	3210	—	41	28	9	1 ÷ 13	0183	1230	5720	0787
d 16 - ER11 GM /L 40	0214	—								
d 16 - ER11 GM /L 60	0292	—								
d 16 - ER11 GM /L 80	0441	—	22	16	7	1 ÷ 7	0181	0432	5718	5573
d 16 - ER11 GM /L 100	2963	—								
d 16 - ER11 GM /L 130	3903	—								
d 16 - ER11 GM /L 160	3904	—								
d 16 - ER11 GM /L 200	3913	—								
d 16 - ER16 GM /L 35	2591	—								
d 16 - ER16 GM /L 60	3211	—								
d 16 - ER16 GM /L 80	3212	—								
d 16 - ER16 GM /L 100	3226	—	37	22	7	1 ÷ 10	0181	1229	5719	0364
d 16 - ER16 GM /L 130	3393	—								
d 16 - ER16 GM /L 160	3490	—								
d 16 - ER16 GM /L 200	2005	—								
d 16 - ER20 GM /L 55	2895	—								
d 16 - ER20 GM /L 100	3213	—	40	28	9	1 ÷ 13	0183	1230	5720	0787
d 16 - ER20 GM /L 130	2982	—								
d 16 - ER20 GM /L 160	2983	—								



segue



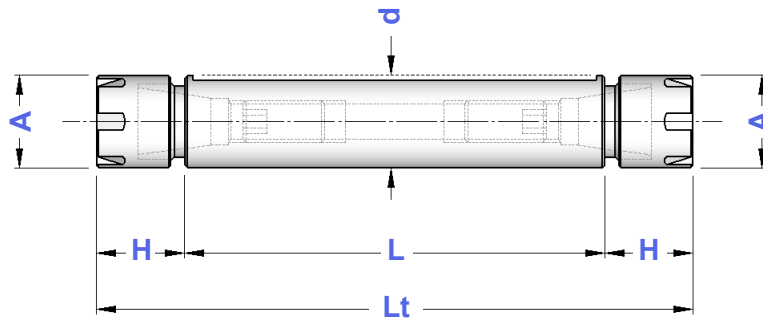
TIPO	Senza Piano	Con Piano	H	A	C	CAPACITA'				
d 19,05 - ER11GM/L 50 d 19,05 - ER11GM/L 100	— —	0189 3013	18	16	7	1 ÷ 7	0181	0432	5718	5573
d 19,05 - ER16GM/L 60 d 19,05 - ER16GM/L 100	— —	0215 3394	30	22	11	1 ÷ 10	0186	1229	5719	0364
d 19,05 - ER20GM/L 50 d 19,05 - ER20GM/L 100	— —	0226 3397	37	28	11	1 ÷ 13	0186	1230	5720	0787
d 19,05 - ER25GM/L 50 d 19,05 - ER25GM/L 100	— —	2897 3037	46	35	11	1 ÷ 16	0186	1231	5721	0996
d 20 - ER11 GM /L 50 d 20 - ER11 GM /L 100 d 20 - ER11 GM /L 130 d 20 - ER11 GM /L 160 d 20 - ER11 GM /L 200	0216 SP 1222 SP 2042 SP 2043 SP 5144 SP	0216 P 1222 P 2042 P 2043 P 5144 P	22	16	7	1 ÷ 7	0181	0432	5718	5573
d 20 - ER16 GM /L 60 d 20 - ER16 GM /L 100 d 20 - ER16 GM /L 130 d 20 - ER16 GM /L 160 d 20 - ER16 GM /L 200 d 20 - ER16 GM /L 250	3905 SP 3520 SP 3909 SP 3521 SP 3522 SP 3528 SP	3905 P 3520 P 3909 P 3521 P 3522 P 3528 P	30	22	11	1 ÷ 10	0186	1229	5719	0364
d 20 - ER20 GM /L 46 d 20 - ER20 GM /L 60 d 20 - ER20 GM /L 100 d 20 - ER20 GM /L 130 d 20 - ER20 GM /L 160 d 20 - ER20 GM /L 200 d 20 - ER20 GM /L 250	3215 SP 0220 SP 3216 SP 3217 SP 0225 SP 3227 SP 3285 SP	3215 P 0220 P 3216 P 3217 P 0225 P 3227 P 3285 P	37	28	11	1 ÷ 13	0186	1230	5720	0787
d 20 - ER25 GM /L 46 d 20 - ER25 GM /L 60 d 20 - ER25 GM /L 100 d 20 - ER25 GM /L 130 d 20 - ER25 GM /L 160	2899 SP 3906 SP 3218 SP 0228 SP 3319 SP	2899 P 3906 P 3218 P 0228 P 3319 P	46	35	11	1 ÷ 16	0186	1231	5721	0996
d 22 - ER16 GM /L 80 d 22 - ER20 GM /L 80	— —	0408 0412	27 30	22 28	11 11	1 ÷ 10 1 ÷ 13	0186 0186	1229 1230	5719 5720	0364 0787
d 25 - ER11 GM /L 100 d 25 - ER11 GM /L 130 d 25 - ER11 GM /L 160	0451 SP 5145 SP 5146 SP	0451 P 5145 P 5146 P	18	16	7	1 ÷ 7	0181	0432	5718	5573
d 25 - ER16 GM /L 60 d 25 - ER16 GM /L 100 d 25 - ER16 GM /L 130 d 25 - ER16 GM /L 160 d 25 - ER16 GM /L 200	0218 SP 0219 SP 0231 SP 3029 SP 3063 SP	0218 P 0219 P 0231 P 3029 P 3063 P	27	22	11	1 ÷ 10	0186	1229	5719	0364
d 25 - ER20 GM /L 60 d 25 - ER20 GM /L 100 d 25 - ER20 GM /L 130 d 25 - ER20 GM /L 160 d 25 - ER20 GM /L 200	3907 SP 0221 SP 0222 SP 3219 SP 4004 SP	3907 P 0221 P 0222 P 3219 P 4004 P	28	28	13	1 ÷ 13	0188	1230	5720	0787
d 25 - ER25 GM /L 50 d 25 - ER25 GM /L 70 d 25 - ER25 GM /L 100 d 25 - ER25 GM /L 130 d 25 - ER25 GM /L 160 d 25 - ER25 GM /L 200	0227 SP 3908 SP 0426 SP 0446 SP 0449 SP 0462 SP	0227 P 3908 P 0426 P 0446 P 0449 P 0462 P	32	35	13	1 ÷ 16	0188	1231	5721	0996
d 25,4-ER16 GM /L 60 d 25,4-ER16 GM /L 100 d 25,4-ER16 GM /L 140	— — —	3030 3031 3038	27	22	11	1 ÷ 10	0186	1229	5719	0364
d 25,4-ER20 GM /L 70 d 25,4-ER20 GM /L 100 d 25,4-ER20 GM /L 140	— — —	3912 0421 0422	28	28	13	1 ÷ 13	0188	1230	5720	0787
d 25,4-ER25 GM /L 70 d 25,4-ER25 GM /L 100 d 25,4-ER25 GM /L 140	— — —	3914 0433 0440	32	35	13	1 ÷ 16	0188	1231	5721	0996
d 32 - ER16 GM /L 90 d 32 - ER20 GM /L 90	— —	3395 3396	30 28	22 28	11 13	1 ÷ 10 1 ÷ 13	0186 0188	1229 1230	5719 5720	0364 0787







DIN 1835 A

PORTAPINZE ER DOPPI CON ATTACCO CILINDRICO - GHIERA MINI

STRAIGHT SHANK ER - DIN 6499 DOUBLE COLLET CHUCKS - MINI NUT

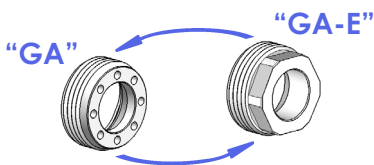


TIPO	Art.	H	Lt	A	CAPACITA'				
d 20 DP - ER 11 GM / L 42	8779	14,0	70			0021			
d 20 DP - ER 11 GM / L 52	8780	14,0	80	16	1 ÷ 7	0375	0432	5718	5573
d 20 DP - ER 11 GM / L 62	8781	14,0	90			0375			
d 20 DP - ER 16 GM / L 37	8782	21,5	80			—			
d 20 DP - ER 16 GM / L 57	8783	21,5	100	22	1 ÷ 10	0060	1229	5719	0364
d 20 DP - ER 16 GM / L 67	8784	21,5	110			0376			
d 20 DP - ER 16 GM / L 122	8988	21,5	165			0376			
d 22 DP - ER 16 GM / L 47	8785	21,5	90			0060			
d 22 DP - ER 16 GM / L 67	8786	21,5	110	22	1 ÷ 10	0376	1229	5719	0364
d 22 DP - ER 16 GM / L 102	8787	21,5	145			0186			
d 25 DP - ER 16 GM / L 27	8788	21,5	70			—			
d 25 DP - ER 16 GM / L 47	8789	21,5	90	22	1 ÷ 10	0060	1229	5719	0364
d 25 DP - ER 16 GM / L 67	8790	21,5	110			0376			
d 25 DP - ER 20 GM / L 82	8791	24,0	130	28	1 ÷ 13	0186	1230	5720	0787
d 32 DP - ER 20 GM / L 57	8792	24,0	105			0060			
d 32 DP - ER 20 GM / L 82	8793	24,0	130	28	1 ÷ 13	0186	1230	5720	0787

DIN 1835 A

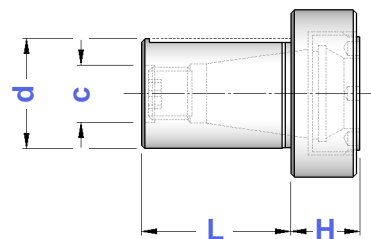
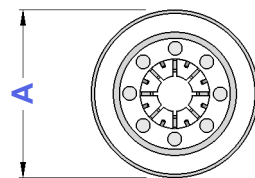
PORTAPINZE ER CON ATTACCO CILINDRICO - GHIERA INTERNA "A"





STRAIGHT SHANK ER - DIN 6499 COLLET CHUCKS - INSIDE NUT "GA" TYPE



La ghiera tipo "GA" può essere sostituita con quella tipo "GA-E" che ha presa di chiave esagonale.

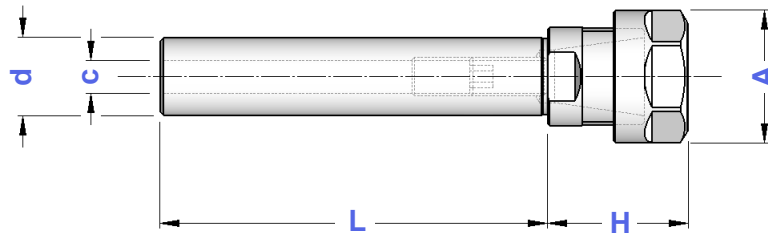
Nut "GA" type can be substituted by "GA-E" type with hexagonal wrench hold.

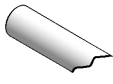
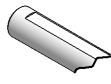






TIPO	Art.	H	L	A	C	CAPACITA'				
d 20 - ER 16 GA	2939	14	34	32	11	1 ÷ 10	0060	2868	3170	0364
d 25 - ER 20 GA	3200	18	34	38	13	1 ÷ 13	0200	2869	3171	0787
d 32 - ER 20 GA	2940	16	36	38	13	1 ÷ 13	0200	2869	3171	0787
d 32 - ER 25 GA	2942	19	36	40	19	1 ÷ 16	0190	2870	3172	0996
d 40 - ER 32 GA	2943	21	45	48	23	2 ÷ 20	0191	2871	3173	0998

**DIN
1835 A**

PORTAPINZA ER CON ATTACCO CILINDRICO - GHIERA ESAGONALE
STRAIGHT SHANK ER - DIN 6499 COLLET CHUCKS - HEXAGONAL NUT

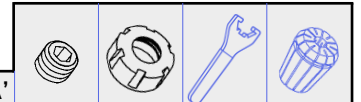
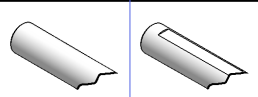


TIPO	 		H	A	C	CAPACITA'				
	Senza Piano	Con Piano								
d 14 - ER 16 GE / L 60	5244	—	36	28	7	1 ÷ 10	0181	1214	2906	0364
d 16 - ER 16 GE / L 60	5245	—	36	28	7	1 ÷ 10	0181	1214	2906	0364
d 16 - ER 16 GE / L 80	5246	—								
d 16 - ER 16 GE / L 100	5247	—								
d 16 - ER 16 GE / L 130	5248	—								
d 16 - ER 16 GE / L 160	5249	—								
d 16 - ER 16 GE / L 200	5250	—								
d 16 - ER 20 GE / L 60	5251	—	40	34	9	1 ÷ 13	0183	1215	2907	0787
d 19,05 - ER 16 GE / L 50	—	5252	32	28	11	1 ÷ 10	0186	1214	2906	0364
d 19,05 - ER 16 GE / L 100	—	5253								
d 19,05 - ER 20 GE / L 50	—	5254	36	34	11	1 ÷ 13	0186	1215	2907	0787
d 19,05 - ER 20 GE / L 100	—	5255								
d 20 - ER 16 GE / L 50	5256 SP	5256 P	31	28	11	1 ÷ 10	0186	1214	2906	0364
d 20 - ER 16 GE / L 100	5257 SP	5257 P								
d 20 - ER 16 GE / L 130	5258 SP	5258 P								
d 20 - ER 16 GE / L 160	5259 SP	5259 P								
d 20 - ER 16 GE / L 200	5260 SP	5260 P								
d 20 - ER 20 GE / L 46	5261 SP	5261 P								
d 20 - ER 20 GE / L 60	5262 SP	5262 P								
d 20 - ER 20 GE / L 100	5263 SP	5263 P								
d 20 - ER 20 GE / L 130	5264 SP	5264 P								
d 20 - ER 20 GE / L 160	5265 SP	5265 P								
d 20 - ER 20 GE / L 200	5266 SP	5266 P								
d 22 - ER 16 GE / L 80	—	5267	26	28	11	1 ÷ 10	0186	1214	2906	0364
d 22 - ER 20 GE / L 80	—	5268	36	34	11	1 ÷ 13	0186	1215	2907	0787
d 25 - ER 16 GE / L 60	5269 SP	5269 P	27	28	11	1 ÷ 10	0186	1214	2906	0364
d 25 - ER 16 GE / L 100	5270 SP	5270 P								
d 25 - ER 16 GE / L 130	5271 SP	5271 P								
d 25 - ER 16 GE / L 160	5272 SP	5272 P								
d 25 - ER 16 GE / L 200	5273 SP	5273 P								
d 25 - ER 20 GE / L 60	5274 SP	5274 P								
d 25 - ER 20 GE / L 100	5275 SP	5275 P								
d 25 - ER 20 GE / L 130	5276 SP	5276 P								
d 25 - ER 20 GE / L 160	5277 SP	5277 P								
d 25,4 - ER 16 GE / L 60	—	5278	27	28	11	1 ÷ 10	0186	1214	2906	0364
d 25,4 - ER 16 GE / L 100	—	5279								
d 25,4 - ER 20 GE / L 60	—	5280	28	34	13	1 ÷ 13	0188	1215	2907	0787
d 25,4 - ER 20 GE / L 100	—	5281								
d 32 - ER 16 GE / L 100	—	5284	27	28	11	1 ÷ 10	0186	1214	2906	0364
d 32 - ER 16 GE / L 150	—	5285								
d 32 - ER 20 GE / L 100	—	5286	28	34	13	1 ÷ 13	0188	1215	2907	0787
d 32 - ER 20 GE / L 150	—	5287								

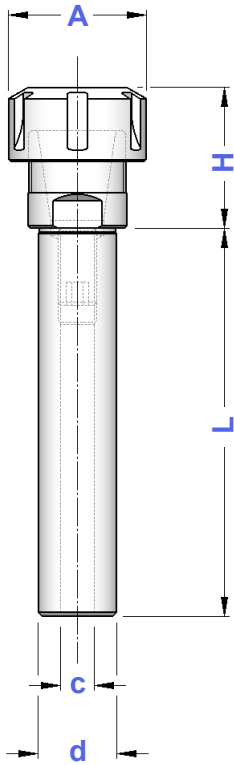
DIN 1835 A

PORTAPINZA ER CON ATTACCO CILINDRICO - GHIERA STANDARD

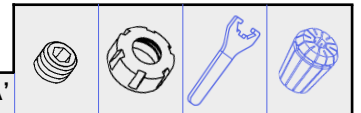
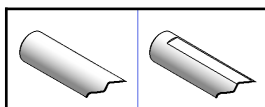
STRAIGHT SHANK ER - DIN 6499 COLLET CHUCKS - STANDARD NUT



TIPO	Senza Piano	Con Piano	H	A	C	CAPACITA'				
d 14 - ER 16 / L 60	3915	—	36	32	7	1 ÷ 10	0181	4993	3698	0364
d 16 - ER 16 / L 60	3916	—	36	32	7	1 ÷ 10	0181	4993	3698	0364
d 16 - ER 16 / L 80	5009	—								
d 16 - ER 16 / L 100	3185	—								
d 16 - ER 16 / L 130	5087	—								
d 16 - ER 16 / L 160	3206	—								
d 16 - ER 16 / L 200	5089	—								
d 16 - ER 20 / L 60	3529	—	40	35	9	1 ÷ 13	0183	4994	3699	0787
d 16 - ER 25 / L 35	0573	—	46	42	9	1 ÷ 16	0183	4995	3669	0996
d 16 - ER 25 / L 70	0574	—								
d 19,05 - ER16/L 50	—	3929	32	32	11	1 ÷ 10	0186	4993	3698	0364
d 19,05 - ER16/L100	—	0229								
d 19,05 - ER20/L 50	—	3930	36	35	11	1 ÷ 13	0186	4994	3699	0787
d 19,05 - ER20/L100	—	0379								
d 19,05 - ER25/L 50	—	2379	46	42	11	1 ÷ 16	0186	4995	3669	0996
d 19,05 - ER25/L100	—	2381								
d 19,05 - ER32/L 50	—	5096	54	50	13	2 ÷ 20	0188	4996	3670	0988
d 19,05 - ER32/L100	—	5097								
d 20 - ER 16 / L 50	3917 SP	3917 P	31	32	11	1 ÷ 10	0186	4993	3698	0364
d 20 - ER 16 / L 100	3918 SP	3918 P								
d 20 - ER 16 / L 130	5098 SP	5098 P								
d 20 - ER 16 / L 160	3228 SP	3228 P								
d 20 - ER 16 / L 200	5099 SP	5099 P								
d 20 - ER 20 / L 46	3919 SP	3919 P								
d 20 - ER 20 / L 60	3920 SP	3920 P	36	35	11	1 ÷ 13	0186	4994	3699	0787
d 20 - ER 20 / L 100	0381 SP	0381 P								
d 20 - ER 20 / L 130	5147 SP	5147 P								
d 20 - ER 20 / L 160	5148 SP	5148 P								
d 20 - ER 20 / L 200	5149 SP	5149 P								
d 20 - ER 25 / L 50	2600 SP	2600 P								
d 20 - ER 25 / L 100	3921 SP	3921 P	46	42	11	1 ÷ 16	0186	4995	3669	0996
d 20 - ER 25 / L 130	3910 SP	3910 P								
d 20 - ER 25 / L 160	3911 SP	3911 P								
d 20 - ER 32 / L 50	3203 SP	3203 P								
d 20 - ER 32 / L 100	3922 SP	3922 P	54	50	13	2 ÷ 20	0188	4996	3670	0988
d 20 - ER 32 / L 130	3931 SP	3931 P								
d 20 - ER 32 / L 160	3932 SP	3932 P								
d 22 - ER 16 / L 80	—	0434								
d 22 - ER 20 / L 80	—	0436	36	35	11	1 ÷ 13	0186	4994	3699	0787
d 22 - ER 25 / L 50	—	3177	42	42	13	1 ÷ 16	0188	4995	3669	0996
d 22 - ER 25 / L 80	—	0437								
d 22 - ER 32 / L 50	—	3178	53	50	13	2 ÷ 20	0188	4996	3670	0988
d 25 - ER 16 / L 60	5163 SP	5163 P	27	32	11	1 ÷ 10	0186	4993	3698	0364
d 25 - ER 16 / L 100	5164 SP	5164 P								
d 25 - ER 16 / L 130	5165 SP	5165 P								
d 25 - ER 16 / L 160	5166 SP	5166 P								
d 25 - ER 16 / L 200	5167 SP	5167 P								
d 25 - ER 20 / L 60	0230 SP	0230 P								
d 25 - ER 20 / L 100	0383 SP	0383 P	28	35	13	1 ÷ 13	0188	4994	3699	0787
d 25 - ER 20 / L 130	5168 SP	5168 P								
d 25 - ER 20 / L 160	5169 SP	5169 P								
d 25 - ER 25 / L 50	3923 SP	3923 P								
d 25 - ER 25 / L 70	5183 SP	5183 P	32	42	13	1 ÷ 16	0188	4995	3669	0996
d 25 - ER 25 / L 100	0391 SP	0391 P								
d 25 - ER 25 / L 130	0392 SP	0392 P								
d 25 - ER 25 / L 160	0393 SP	0393 P								



segue



TIPO	Senza Piano	Con Piano	H	A	C	CAPACITA'				
d 25 - ER 32 / L 50	1216 SP	1216 P	54	50	13	2 ÷ 20	0188	4996	3670	0988
d 25 - ER 32 / L 70	1221 SP	1221 P								
d 25 - ER 32 / L 100	3924 SP	3924 P								
d 25 - ER 32 / L 130	3927 SP	3927 P								
d 25 - ER 32 / L 160	3928 SP	3928 P								
d 25 - ER 40 / L 50	2901 SP	2901 P	60	63	13	3 ÷ 30	0188	4997	3671	0821
d 25 - ER 40 / L 100	3266 SP	3266 P								
d 25,4 - ER 16 / L 60	—	5184	27	32	11	1 ÷ 10	0186	4993	3698	0364
d 25,4 - ER 16 / L 100	—	5185								
d 25,4 - ER 20 / L 60	—	0296	28	35	13	1 ÷ 13	0188	4994	3699	0787
d 25,4 - ER 20 / L 100	—	0386								
d 25,4 - ER 25 / L 50	—	3933	32	42	13	1 ÷ 16	0188	4995	3669	0996
d 25,4 - ER 25 / L 70	—	5186								
d 25,4 - ER 25 / L 100	—	3934								
d 25,4 - ER 32 / L 50	—	1217	54	50	13	2 ÷ 20	0188	4996	3670	0988
d 25,4 - ER 32 / L 70	—	5187								
d 25,4 - ER 32 / L 100	—	3935								
d 25,4 - ER 40 / L 50	—	1917	60	63	13	3 ÷ 30	0188	4997	3671	0821
d 30 - ER 25 / L 50	—	3925	45	42	19	1 ÷ 16	0190	4995	3669	0996
d 30 - ER 32 / L 50	—	2593	53	50	23	2 ÷ 20	0191	4996	3670	0988
d 30 - ER 40 / L 50	—	2594	60	63	23	3 ÷ 30	0191	4997	3671	0821
d 31,75 - ER32/L 50	—	1218	44	50	23	2 ÷ 20	0191	4996	3670	0988
d 31,75 - ER40/L 50	—	3938	60	63	23	3 ÷ 30	0191	4997	3671	0821
d 32 - ER 16 / L 100	—	5188	27	32	11	1 ÷ 10	0186	4993	3698	0364
d 32 - ER 16 / L 150	—	5189								
d 32 - ER 20 / L 100	—	5190	28	35	13	1 ÷ 13	0188	4994	3699	0787
d 32 - ER 20 / L 150	—	5191								
d 32 - ER 25 / L 70	—	0307	28	42	19	1 ÷ 16	0190	4995	3669	0996
d 32 - ER 25 / L 100	—	5192								
d 32 - ER 25 / L 120	—	0309								
d 32 - ER 25 / L 150	—	5193								
d 32 - ER 32 / L 50	—	1424	38	50	23	2 ÷ 20	0191	4996	3670	0988
d 32 - ER 32 / L 70	—	3181								
d 32 - ER 32 / L 100	—	0402								
d 32 - ER 32 / L 120	—	0450								
d 32 - ER 32 / L 150	—	3398								
d 32 - ER 40 / L 50	—	1918								
d 32 - ER 40 / L 70	—	0405								
d 32 - ER 40 / L 100	—	5194								
d 32 - ER 40 / L 130	—	5195								
d 35 - ER 32 / L 80	—	5196	38	50	23	2 ÷ 20	0191	4996	3670	0988
d 40 - ER 25 / L 70	—	3405	42	42	19	1 ÷ 16	0190	4995	3669	0996
d 40 - ER 25 / L 120	—	3406								
d 40 - ER 32 / L 70	—	3204	30	50	23	2 ÷ 20	0191	4996	3670	0988
d 40 - ER 32 / L 100	—	3356								
d 40 - ER 32 / L 130	—	3399								
d 40 - ER 32 / L 160	—	3357								
d 40 - ER 40 / L 50	—	3205	60	63	28	3 ÷ 30	0195	4997	3671	0821
d 40 - ER 40 / L 80	—	0406								
d 40 - ER 40 / L 130	—	3942								
d 44,45 - ER32/L160	—	3424	33	50	23	2 ÷ 20	0191	4996	3670	0988
d 44,45 - ER40/L160	—	3428	40	63	28	3 ÷ 30	0195	4997	3671	0821
d 50 - ER 32 / L 125	—	3409	32	50	23	2 ÷ 20	0191	4996	3670	0988
d 50 - ER 32 / L 160	—	3519								
d 50 - ER 40 / L 125	—	5197	37	63	28	3 ÷ 30	0195	4997	3671	0821
d 50 - ER 40 / L 160	—	3412								
d 50,8 - ER 32 / L 160	—	3422	32	50	23	2 ÷ 20	0191	4996	3670	0988
d 50,8 - ER 40 / L 160	—	3426	37	63	28	3 ÷ 30	0195	4997	3671	0821
d 60 - ER 32 / L 160	—	3514	32	50	23	2 ÷ 20	0191	4996	3670	0988
d 60 - ER 40 / L 160	—	3515	37	63	28	3 ÷ 30	0195	4997	3671	0821

