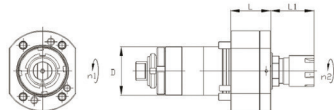
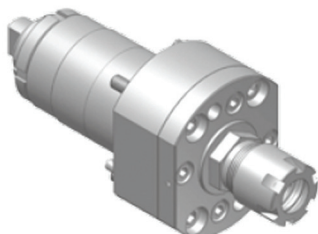


**PORTE-OUTILS ROTATIF AXIAL**
**POTOR161000**

RATIO / 1:1  
VR MAX / 8 000  
PINCE / ER16 M

REF.	RATIO	RPM (MAX)	PINCE	MODÈLE
POTOR161000	1:1	8 000	ER16 M	GAMMA-20

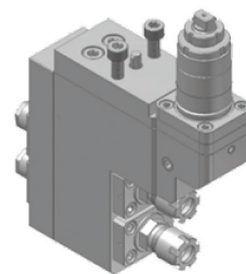
L	L1	D
29	31	35


**PORTE-OUTILS ROTATIF DOUBLE AXIAL**
**POTOR562000**

RATIO / 1:1  
VR MAX / 8 000  
PINCE AVANT / ER16 M  
PINCE ARRIÈRE / ER11 A

RATIO	RPM (MAX)	PINCE AVANT	PINCE ARRIÈRE
1:1	8 000	ER16 M	ER11 A

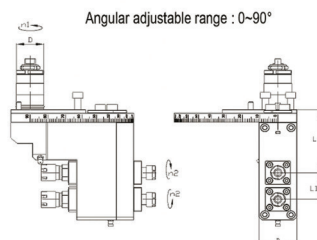
L	L1	D
85	36	35


**PORTE-OUTILS ROTATIF TRIPLE AXIAL**
**POTOR562100**

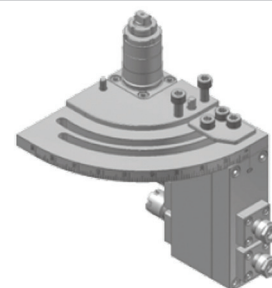
RATIO / 1:1  
VR MAX / 8 000  
PINCE AVANT / ER16 M  
PINCE ARRIÈRE / ER11 M  
ANGLE D'UTILISATION / 0-90°

REF.	RATIO	RPM (MAX)	PINCE AVANT	PINCE ARRIÈRE	MODÈLE
POTOR562100	1:1	8 000	ER16 M	ER11 A	GAMMA-20

L	L1	B	D
85	36	48	35



Angular adjustable range : 0-90°

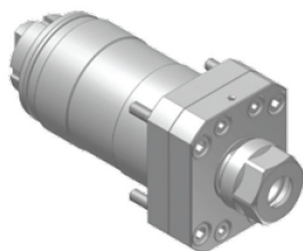


# DELTA 38

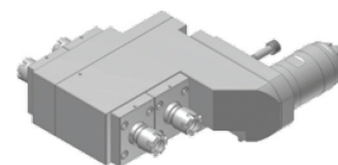
## PORTE-OUTILS FRONTAUX

**PORTE-OUTILS ROTATIF AXIAL**
**POTOR246100**

RATIO / 1:1  
VR MAX / 6 000  
PINCE / ER16 A


**PORTE-OUTILS ROTATIF DOUBLE AXIAL**
**POTOR546200**

RATIO / 1:1  
VR MAX / 6 000  
PINCE / ER16 M

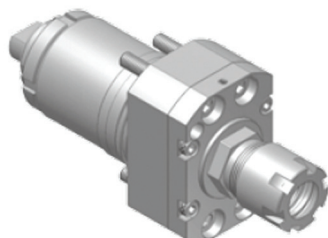


# DELTA 38

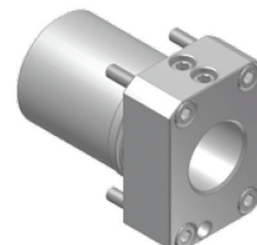
## PORTE-OUTILS REPRISE ARRIÈRE

**PORTE-OUTILS ROTATIF AXIAL**
**POTOR746100**

RATIO / 1:1  
VR MAX / 6 000  
PINCE / ER16 A


**ADAPTATEUR OUTIL**
**POTOR640100**

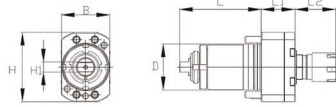
FIXATION PORTE-OUTILS / Ø 42 MM  
DIAMÈTRE D'ALÉSAGE / Ø 25 MM



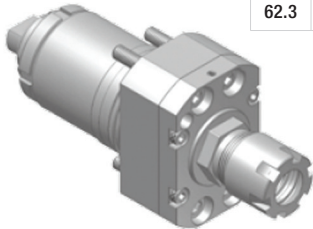
**PORTE-OUTILS ROTATIF AXIAL**

**POTOR761000**

RATIO / 1:1  
VR MAX / 8 000  
PINCE / ER16 M



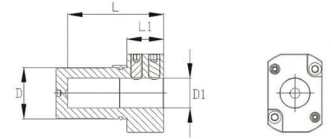
L	L1	L2	B	H	H1	D
62.3	25.5	31	37	53	7.9	35



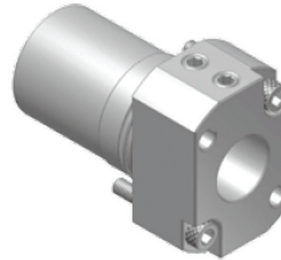
**ADAPTATEUR OUTIL**

**POTOR601000**

FIXATION PORTE-OUTILS / Ø 35 MM  
DIAMÈTRE D'ALÉSAGE / Ø 20 MM



REF.	L	L1	D	D1
POTOR601000	73	25	35	20

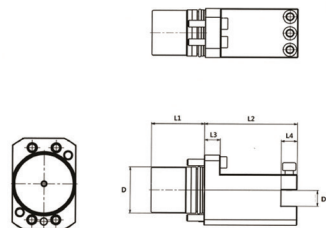
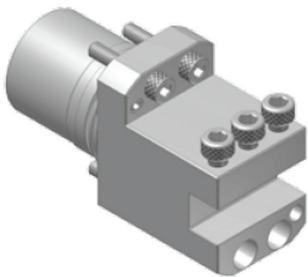


**PORTE-OUTILS TOURNAGE**

**POTOR620100**

FIXATION PORTE-OUTILS / Ø 35 MM  
CARRÉ / 12 MM

REF.	L1	L2	L3	L4	D	D1	MODÈLE
POTOR620100	40	70	12	12	35	12	GAMMA-20

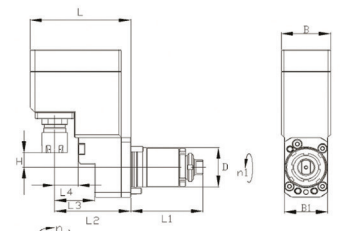
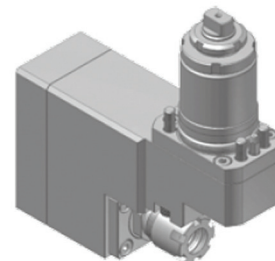


**APPAREIL À FENDRE**

**POTOR861000**

RATIO / 1:1  
VR MAX / 6 000  
FIXATION PORTE-OUTILS / ER16 M

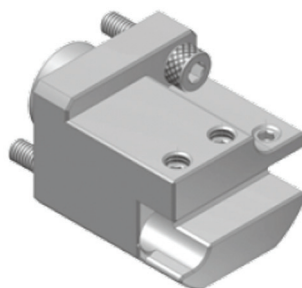
L	L1	L2	L3	L4	D	B	B1	H
86	62	65	34	20	35	42	37	13



**PORTE-OUTILS TOURNAGE**

**POTOR620101**

FIXATION PORTE-OUTILS / Ø 35 MM

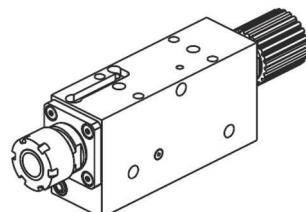


**PORTE-OUTILS VERSION COURTE ER25**

**POTOR3001000**

RATIO / 1:1  
VR MAX / 6 000  
PINCE / ER25

RÉF. TORNOS TOR300-1-00



**PORTE-OUTILS VERSION COURTE ER25**

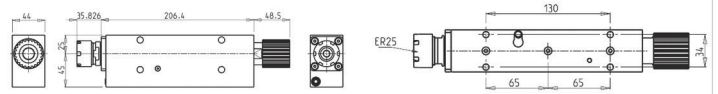
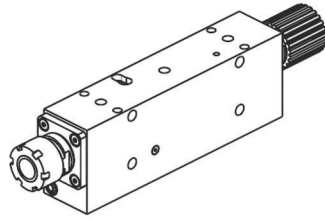
**POTOR305100**

RATIO / 1:1

VR MAX / 6 000

PINCE / ER25

RÉF. TORNOS TOR305-1-00



# DECO 2000 PORTE-OUTILS DE POLYGONAGE

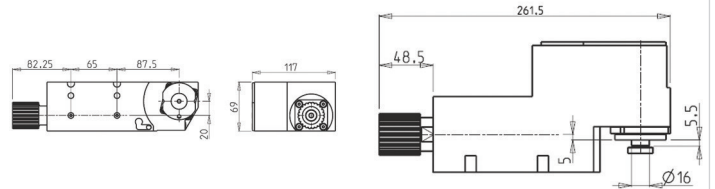
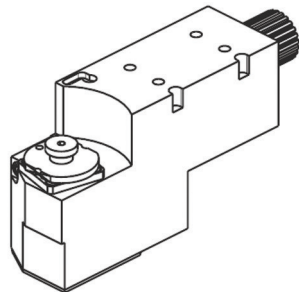
**PORTE-OUTILS DE POLYGONAGE**

**POTOR310100**

RATIO / 1:1

VR MAX / 4 000

RÉF. TORNOS TOR310-1-00



# PORTE-OUTILS POUR MACHINE TORNOS ET TSUGAMI

**PORTE-OUTILS**

POUR MACHINES TSUGAMI ET TORNOS

**POTSU596200 / POTOR596200**

RATIO / 1:1

VR MAX / 6 000

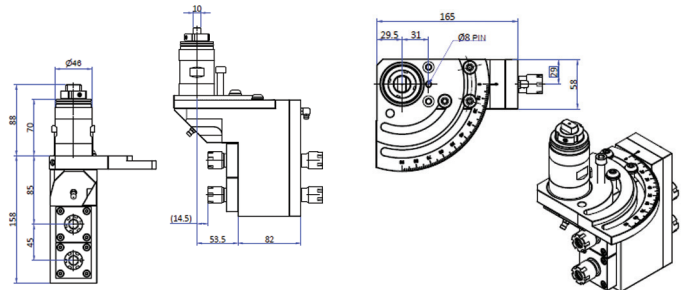
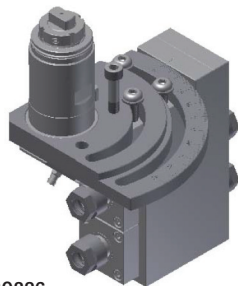
PINCE / ER16 M

ANGLE D'UTILISATION / 0-90°

RÉF. TSUGAMI : 3282-Y921

MACHINES TSUGAMI B0385 / B0265 / B0325 / B0326

MACHINES TORNOS : DELTA38



**PORTE-OUTILS**

POUR MACHINES TORNOS ET TSUGAMI

**POTSU496200 / POTOR496200**

RATIO / 1:1.16

VR MAX / 6 000

PINCE / ER16 M

ANGLE D'UTILISATION / 0-90°

MACHINES TSUGAMI B0265 / B0266 / B0325 / B0326 / B0385 - MACHINES TORNOS : DELTA38

