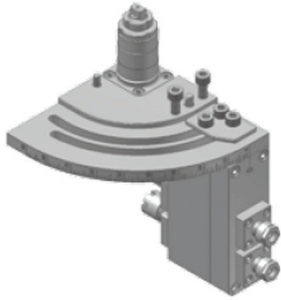
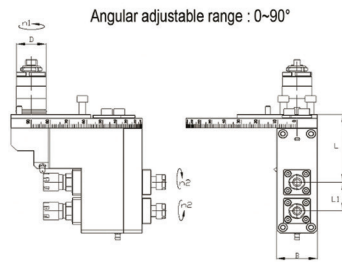


**PORTE-OUTILS ROTATIF DOUBLE AXIAL**

**POTSU562100**

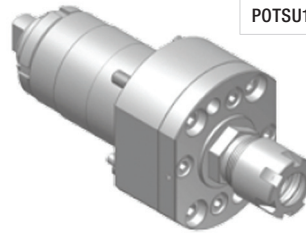
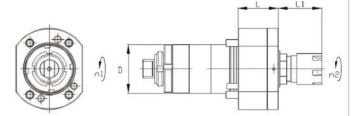
RATIO / 1:1  
VR MAX / 8 000  
PINCE AVANT / ER16 M  
PINCE ARRIÈRE / ER11 A  
ANGLE UTILISATION / 0-90°



**PORTE-OUTILS ROTATIF AXIAL**

**POTSU161000**

RATIO / 1:1  
VR MAX / 8 000  
PINCE / ER16 M



REF.	RATIO	RPM (MAX)	PINCE
POTSU161000	1:1	8 000	ER16-M

L	L1	D
29	31	35

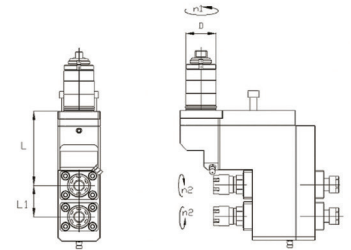
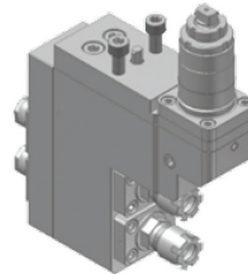
**PORTE-OUTILS ROTATIF DOUBLE AXIAL**

**POTSU562000**

RATIO / 1:1  
VR MAX / 8 000  
PINCE AVANT / ER16 M  
PINCE ARRIÈRE / ER11 A

L	L1	D
85	36	35

REF.	RATIO	RPM (MAX)	PINCE AVANT	PINCE ARRIÈRE
POTSU562000	1:1	8 000	ER16 M	ER11 A

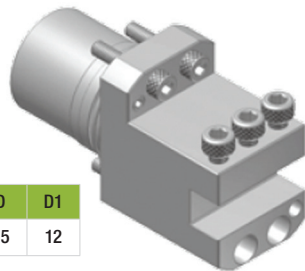


# S205 / S206 PORTE-OUTILS REPRISE ARRIÈRE

**PORTE-OUTILS DE TOURNAGE**

**POTSU620100**

FIXATION PORTE-OUTILS / Ø 35 MM  
CARRÉ / 12 MM

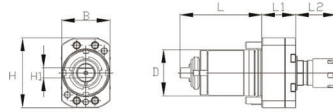
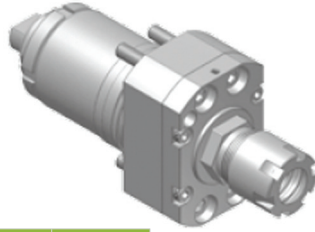


REF.	L1	L2	L3	L4	D	D1
POTSU620100	40	70	12	12	35	12

**PORTE-OUTILS ROTATIF AXIAL**

**POTSU761000**

RATIO / 1:1  
VR MAX / 8 000  
PINCE / ER16 M



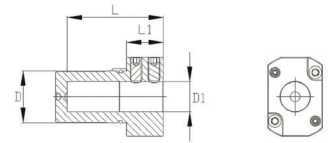
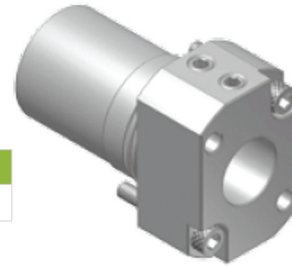
L	L1	L2	B	H	H1	D
62.3	25.5	31	37	53	7.9	35

REF.	RATIO	RPM (MAX)	PINCE	MODÈLE
POTSU761000	1:1	8 000	ER16 M	S206

**PORTE-DOUILLE**

**POTS11601000**

FIXATION PORTE-OUTILS / Ø 35 MM

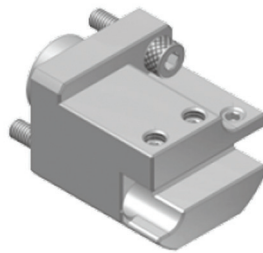


REF.	L	L1	D	D1
POTS11601000	73	25	35	20

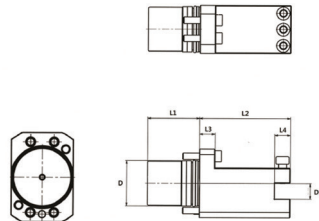
**PORTE-OUTILS TOURNAGE**

**POTSU620101**

FIXATION PORTE-OUTILS / Ø 35 MM  
CARRÉ / 10 MM



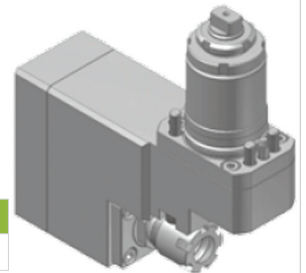
REF.	L1	L2	L3	L4	D	D1	MODÈLE
POTSU620101	40	70	12	12	35	12	S205, S206



**PORTE-OUTILS ROTATIF TRANSVERSAL**

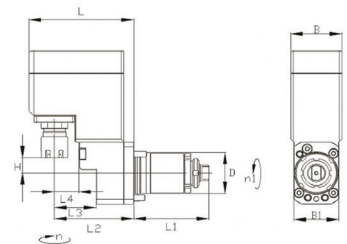
**POTSU861000**

RATIO / 1:1  
VR MAX / 6 000  
PINCE / ER16 M



REF.	RATIO	RPM (MAX)	PINCE
POTSU861000	1:1	4 000	ER16 M

L	L1	L2	L3	L4	D	B	B1	H
86	82	85	34	20	35	42	37	13

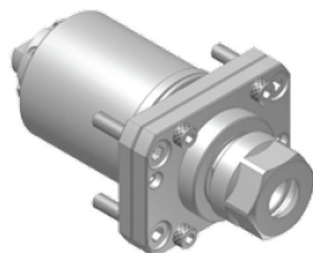


**B0385**  
**PORTE-OUTILS REPRISE ARRIÈRE**

**PORTE-OUTILS ROTATIF AXIAL**

**POTSU746100**

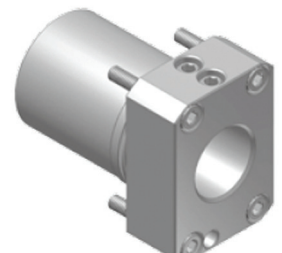
RATIO / 1:1  
VR MAX / 6 000  
PINCE / ER16 A  
RÉF. TSUGAMI 3282-Y041



**PORTE-DOUILLE**

**POTSU640100**

FIXATION PORTE-OUTILS / Ø 42 MM  
DOUILLE / Ø 25 MM  
RÉF. TSUGAMI 3282-Y211

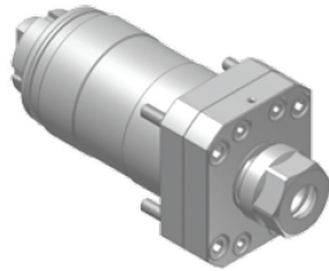


**PORTE-OUTILS FRONTAUX**

**PORTE-OUTILS ROTATIF TRANSVERSAL**

**POTSU246100**

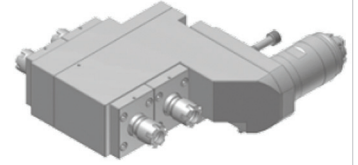
RATIO / 1:1  
VR MAX / 6 000  
PINCE / ER16 A  
RÉF. TSUGAMI 3268-T051



**PORTE-OUTILS ROTATIF DOUBLE AXIAL**

**POTSU546200**

RATIO / 1:1  
VR MAX / 6 000  
PINCE / ER16 M  
RÉF. TSUGAMI 3282-Y901



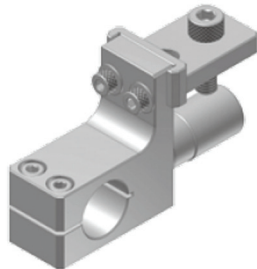
**B0125/B0205**

**PORTE-OUTILS FRONTAUX**

**PORTE-BARRE D'ALÉSAGE**

**POTSU701001**

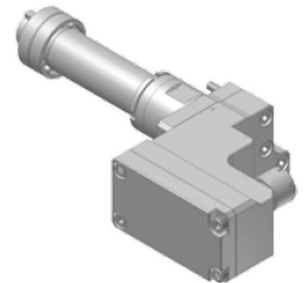
FIXATION Ø 20 MM  
DIAMÈTRE D'ALÉSAGE Ø 22.8 MM



**PORTE-OUTILS ROTATIF AXIAL**

**POTSU411000**

RATIO / 1:1  
VR MAX / 6 000  
PINCE / ER16 A



**B026V**

**PORTE-OUTILS FRONTAUX**

**PORTE-OUTILS ROTATIF AXIAL**

**POTSU511000**

RATIO / 1:1  
VR MAX / 6 000  
FIXATION PORTE-OUTILS / ER16 A

L	L1	L2	B	D
23	63.5	65	35	34

REF.	RATIO	RPM (MAX)	PINCE	MODÈLE
POTSU511000	1:1	5 000	ER11 M	B026-V

